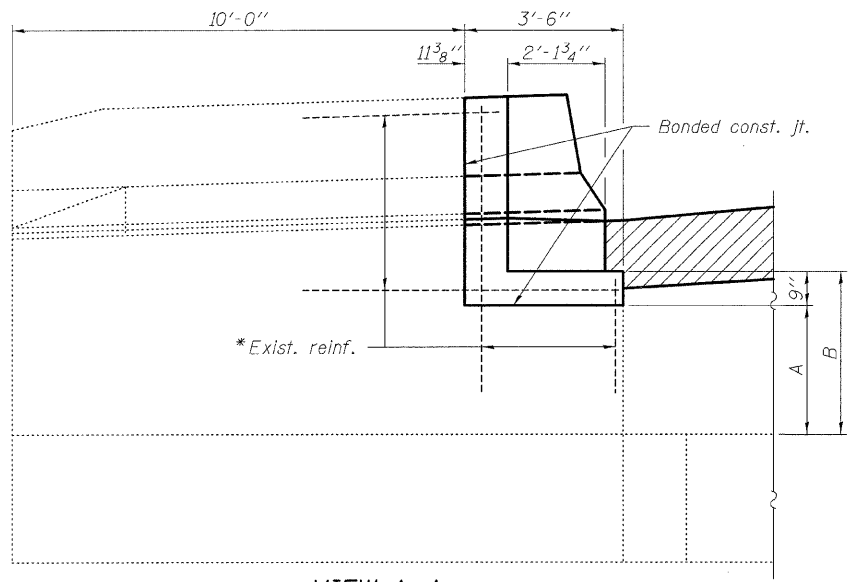
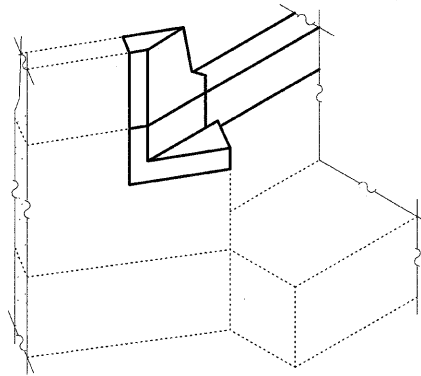


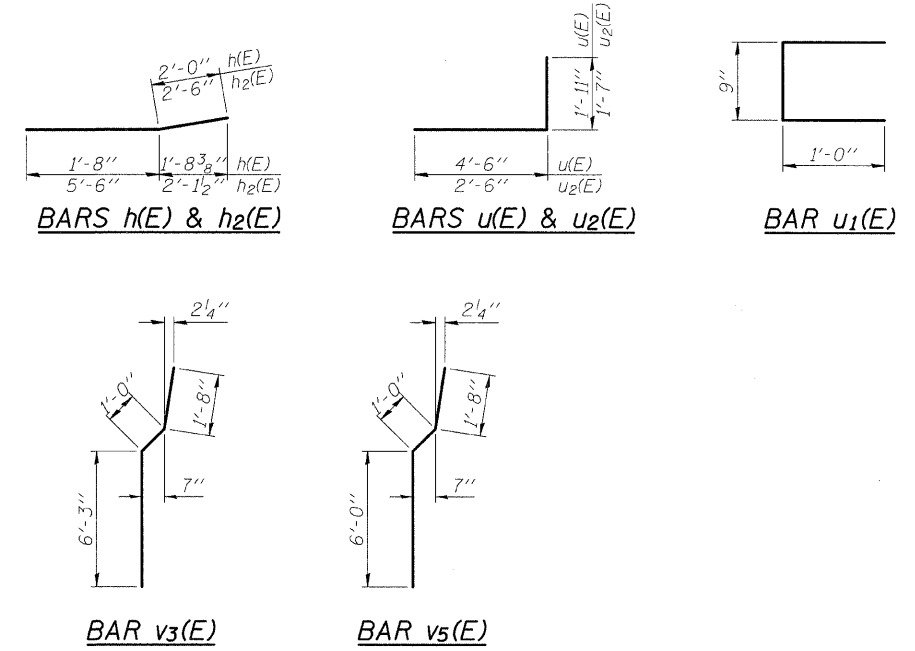
STATE OF ILLINOIS
DEPARTMENT OF TRANSPORTATION



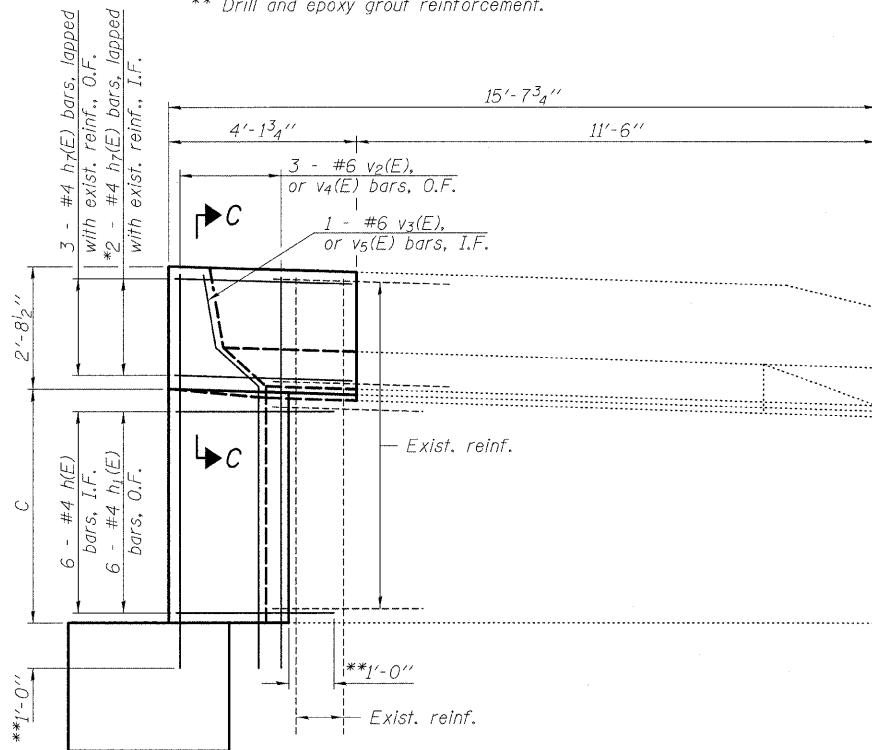
VIEW A-A



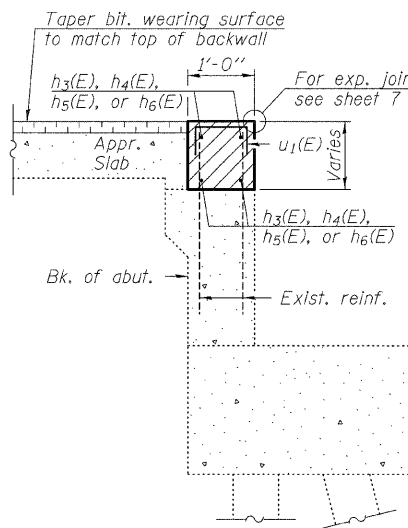
ISOMETRIC - VIEW A-A



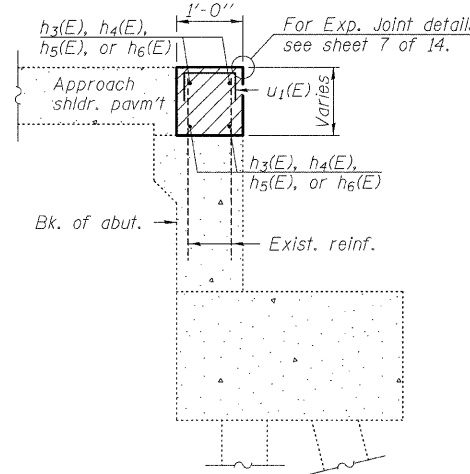
* Cut reinforcement to maintain a 1/2" minimum clearance.
** Drill and epoxy grout reinforcement.



VIEW B-B

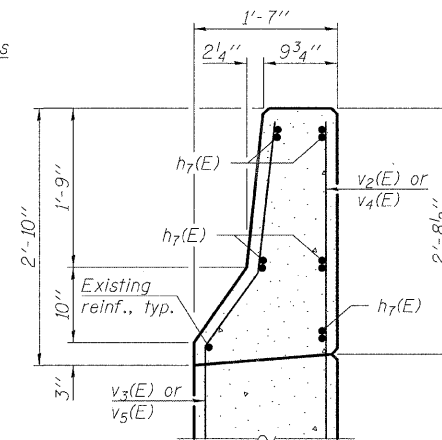


AT APPROACH SLAB



AT APPROACH SHOULDER

SECTION THRU ABUTMENT



SECTION C-C

ABUTMENT
BILL OF MATERIAL
TWO STRUCTURES

Bar	No.	Size	Length	Shape
h(E)	24	#4	3'-8"	
h1(E)	24	#4	3'-5"	
h2(E)	8	#5	8'-0"	
h3(E)	8	#5	34'-0"	
h4(E)	8	#5	36'-3"	
h5(E)	16	#5	27'-3"	
h6(E)	16	#5	26'-2"	
h7(E)	20	#4	3'-11"	
p(E)	8	#6	3'-10"	
u(E)	18	#4	6'-5"	
u1(E)	344	#5	2'-9"	
u2(E)	8	#4	4'-1"	
v(E)	5	#6	4'-9"	
v1(E)	9	#6	2'-7"	
v2(E)	6	#6	8'-8"	
v3(E)	2	#6	8'-11"	
v4(E)	6	#6	8'-6"	
v5(E)	2	#6	8'-8"	
v6(E)	4	#6	4'-4"	
Concrete Removal		Cu. Yd.	2.3	
Structure Excavation		Cu. Yd.	15	
Concrete Structures		Cu. Yd.	7.4	
Reinforcement Bars, Epoxy Coated		Pound	3,160	
Concrete Sealer		Sq. Ft.	1,435	

For details of Bar Splicers, see sheet 14 of 14.

Notes:
Hatched area to be poured after superstructure falsework has been removed. Quantity of concrete included with Concrete Superstructure. Concrete Sealer shall be applied to the bearing seats. Quantity of concrete in end post included with Concrete Superstructure on sheet 6 of 14.
For substructure Concrete Removal details, see sheet 5 of 14.

TABLE OF VARIABLE
DIMENSIONS

	S.N. 060-0012		S.N. 060-0013	
	W. Abut.	E. Abut.	W. Abut.	E. Abut.
A	2'-10 1/8"	3'-2 3/8"	2'-10 3/8"	3'-2 7/8"
B	3'-7 1/8"	3'-11 3/8"	3'-7 3/8"	3'-11 1/8"
C	5'-2"	4'-11 1/4"	5'-2 1/8"	4'-11 1/8"

MINIMUM BAR LAP
#5 bar = 3'-0"

DESIGNED	EML
CHECKED	JJD
DRAWN	EML
CHECKED	JJD

ABUTMENT DETAILS
STRUCTURE NO. 060-0012 (E.B.)
STRUCTURE NO. 060-0013 (W.B.)

HORNER &
SHIFRIN, INC.
ENGINEERS

SHEET NO. 12 14 SHEETS	F.A.I. RTE.	SECTION	COUNTY	TOTAL SHEETS	SHEET NO.
	70	60-(5,6,7)RS, 60-(6,7)BR	MADISON	185	126
	CONTRACT NO. 76C56				
FED. ROAD DIST. NO.		ILLINOIS	FED. AID PROJECT		