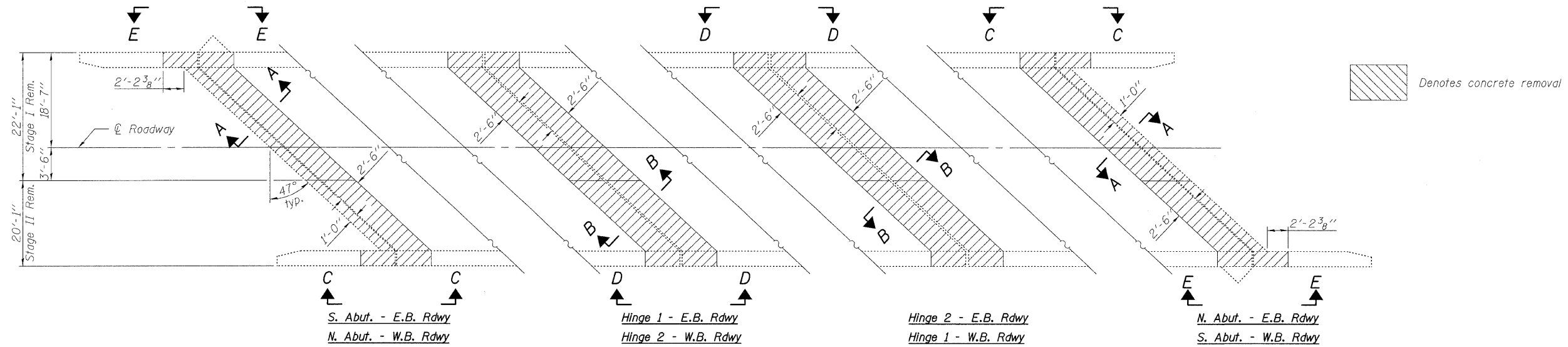
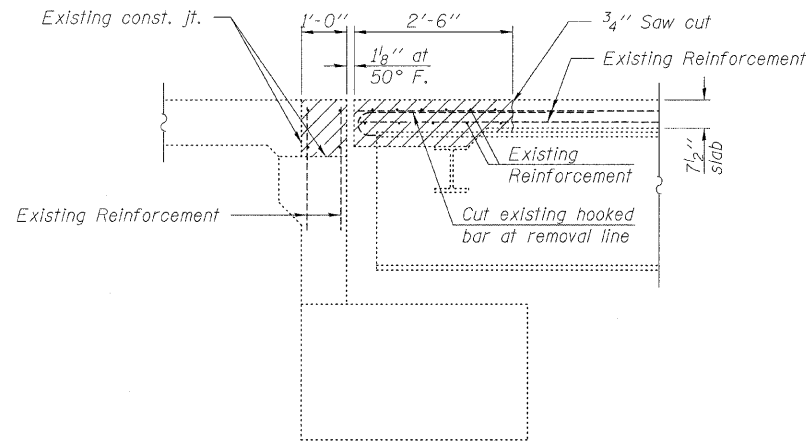


STATE OF ILLINOIS
DEPARTMENT OF TRANSPORTATION

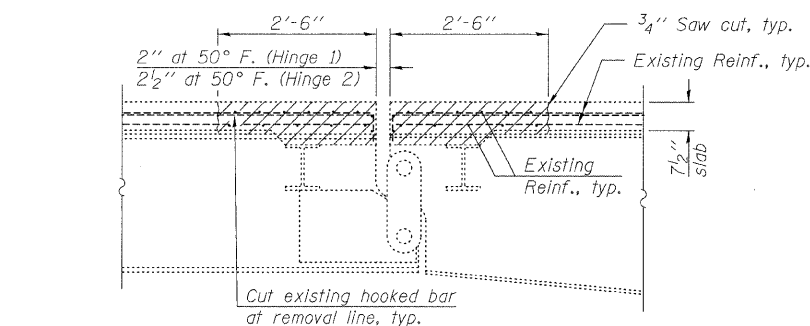


PLAN OF REMOVAL DETAIL



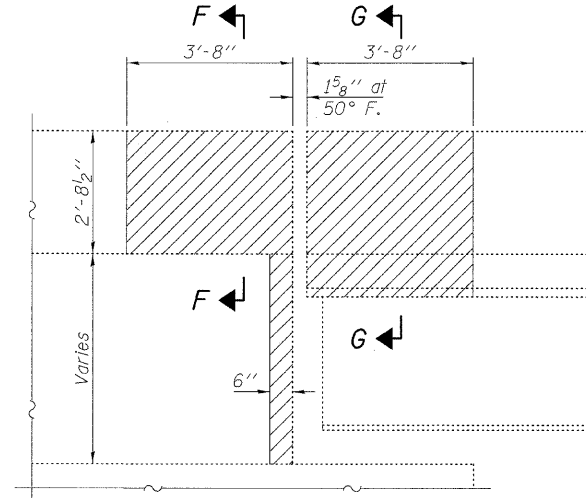
SECTION A-A

(Horz. dim. at right L's)

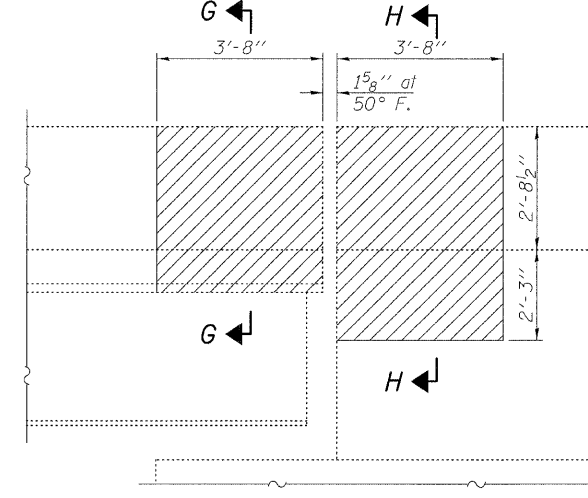


SECTION B-B

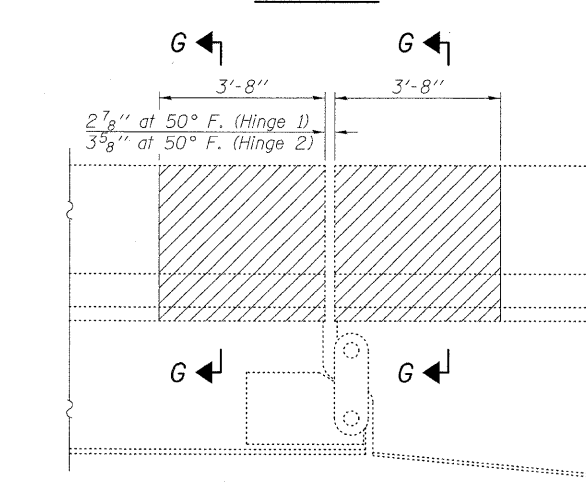
(Horz. dim. at right L's)



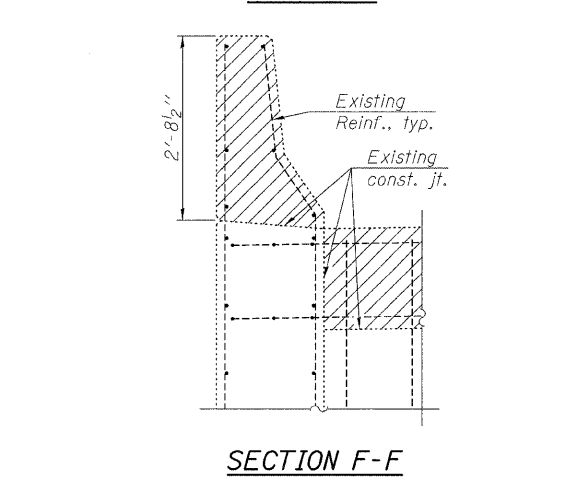
VIEW C-C



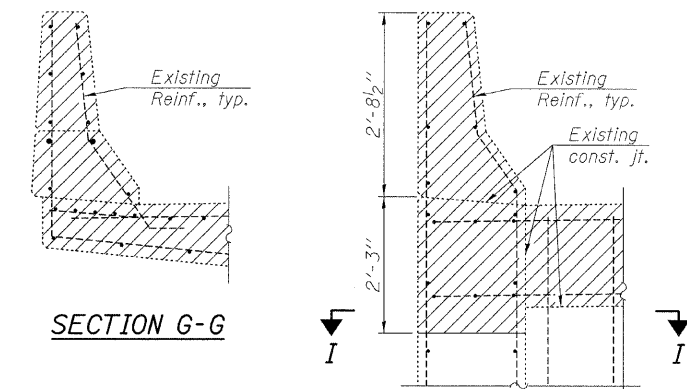
VIEW E-E



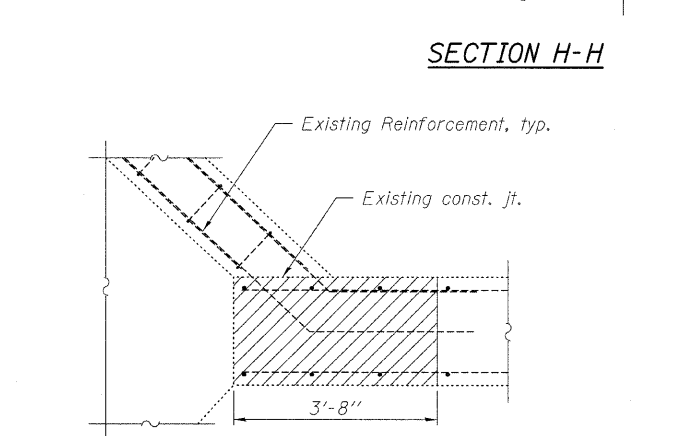
VIEW D-D



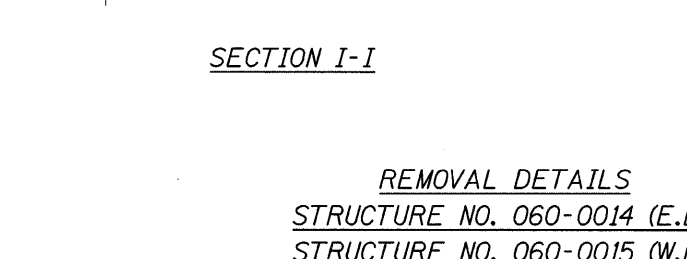
SECTION F-F



SECTION G-G



SECTION H-H



SECTION I-I

REMOVAL DETAILS
STRUCTURE NO. 060-0014 (E.B.)
STRUCTURE NO. 060-0015 (W.B.)

DESIGNED	EML
CHECKED	KLH
DRAWN	EML
CHECKED	KLH

HORNER & SHIFRIN, INC.
ENGINEERS

SHEET NO. 5 16 SHEETS	F.A.I. RTE.	SECTION	COUNTY	TOTAL SHEETS	SHEET NO.
	70	60-(6,7)BR	MADISON	185	133
CONTRACT NO. 76C56					
FED. ROAD DIST. NO.		ILLINOIS FED. AID PROJECT			