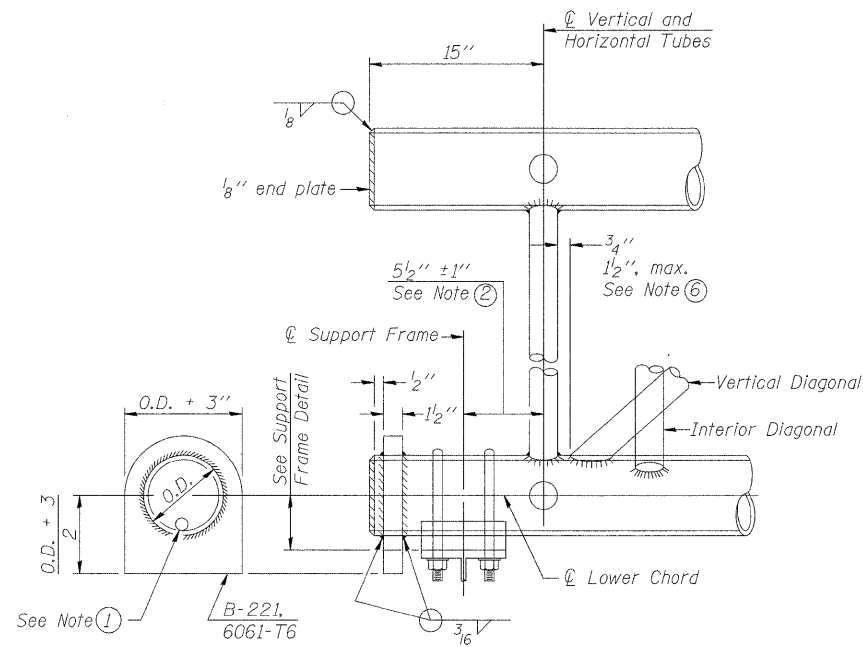
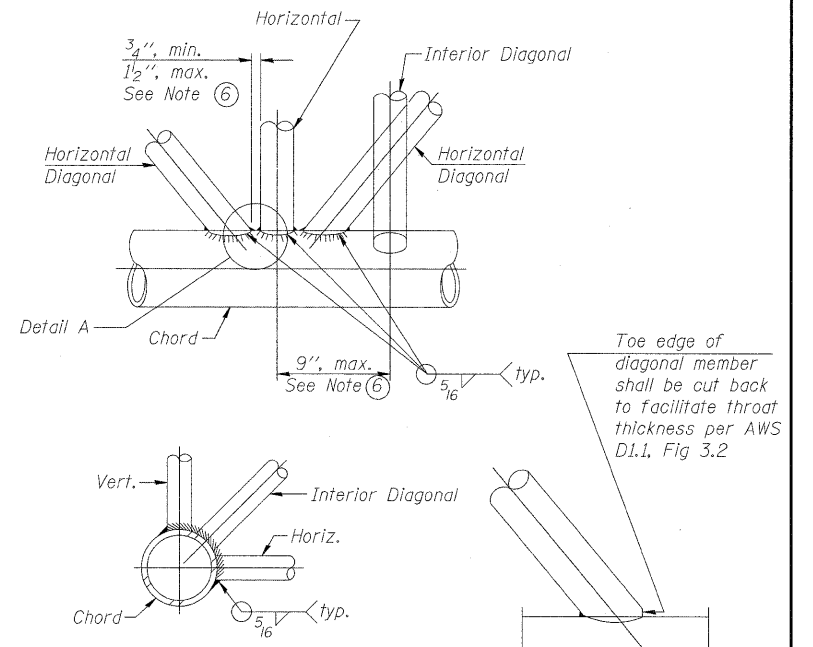


**ELEVATION
TYPICAL INTERIOR UNIT**
Even number of panels/interior unit required.



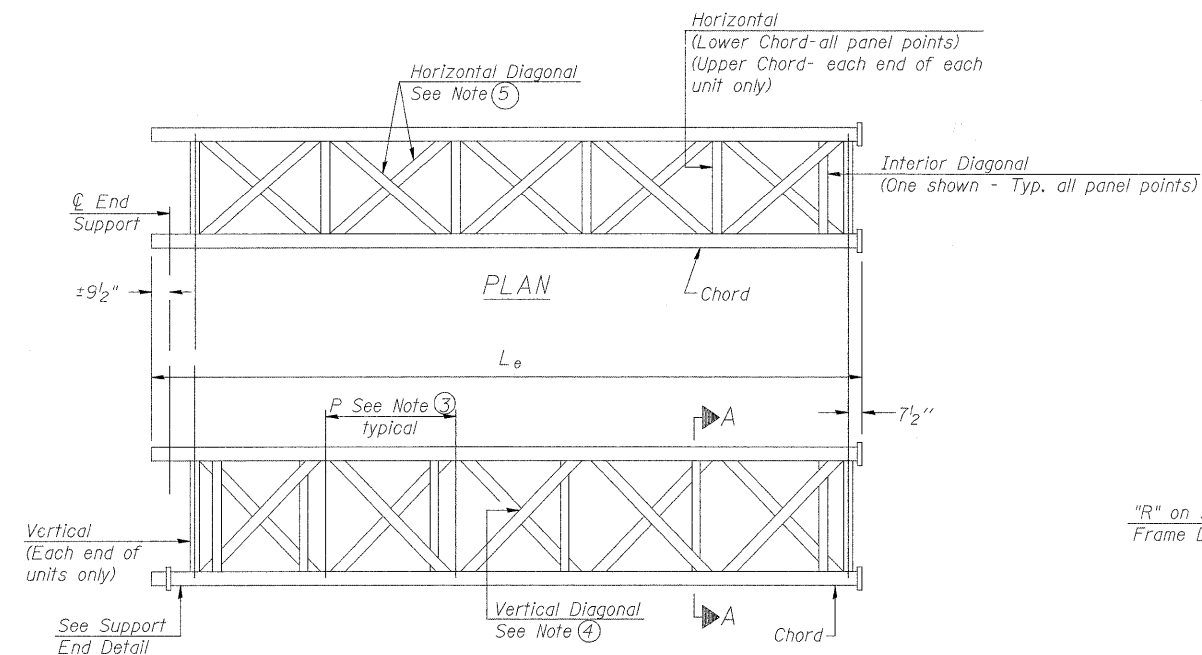
SUPPORT END DETAIL FOR EXTERIOR UNIT



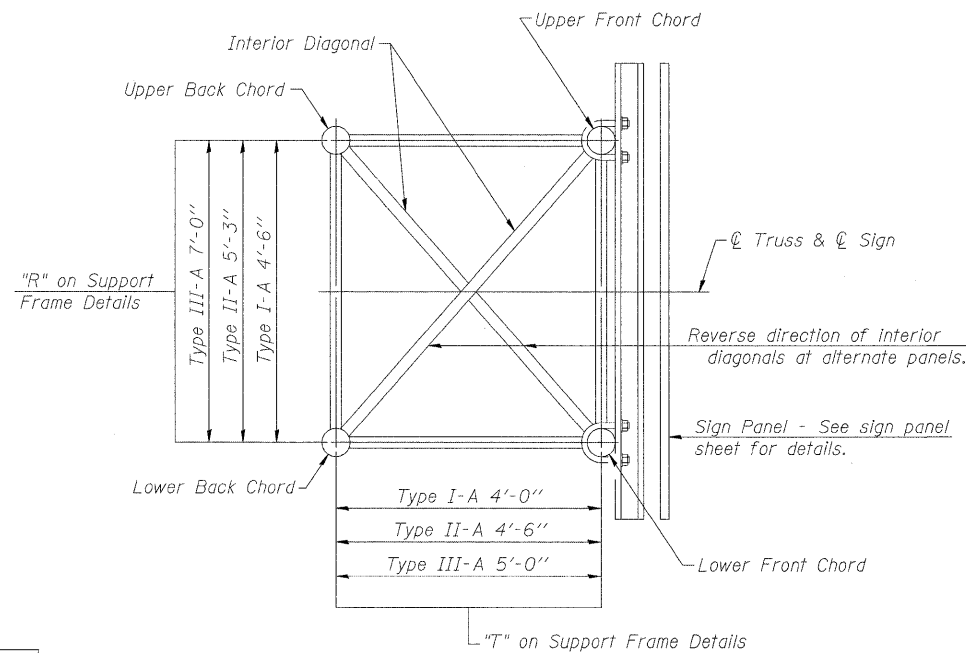
TYPICAL JOINT DETAILS

DETAIL A

- ① Contractor may alternatively use standard aluminum drive-fit cap to close end. 1/2" φ drain hole in end plate/drive-fit cap. (Typ. at ends of all chords)
- ② 5 1/2" end dimension may vary by ±1" to provide uniform panel spacing (P).
- ③ Panel spacing (P) shall be uniform for entire truss and between 4'-0" and 5'-0" for Type I-A or 4'-0" and 5'-6" for Types II-A and III-A.
- ④ Vertical Diagonals in front and back face shall alternate.
- ⑤ Hidden lines show wind bracing alternates direction between planes of top and bottom chords.
- ⑥ All diagonals shall be detailed for minimum offset from the panel point based on the following: Offset shall be such as to provide a 3/4" minimum to 1 1/2" maximum clearance between any diagonal and any horizontal or vertical member, and to provide clearance for U-bolt connections of signs or walkway brackets.



**ELEVATION
TYPICAL EXTERIOR UNIT**
Even or odd number of panels/exterior units allowed.



SECTION A-A

NUMBER	REVISION	DATE

OS-A-2

12-1-08

FILE NAME = #FILE#	USER NAME = #USER#	DESIGNED - ---	REVISED - ---
		DRAWN - ---	REVISED - ---
	PLOT SCALE = #SCALE#	CHECKED - ---	REVISED - ---
	PLOT DATE = #DATE#	DATE - ---	REVISED - ---

**STATE OF ILLINOIS
DEPARTMENT OF TRANSPORTATION**

**OVERHEAD SIGN STRUCTURES ALUMINUM TRUSS DETAILS
FOR TRUSS TYPES I-A, II-A AND III-A**

SCALE: _____	SHEET NO. _____ OF _____ SHEETS	STA. _____ TO STA. _____	F.A.I. RTE. 64	SECTION Dist 8 ITS 2010-3	COUNTY ST CLAIR	TOTAL SHEETS 14	SHEET NO. 5
--------------	---------------------------------	--------------------------	----------------	---------------------------	-----------------	-----------------	-------------

**OVERHEAD SIGN STRUCTURES
ALUMINUM TRUSS DETAILS
FOR TRUSS TYPES I-A, II-A AND III-A**

FED. ROAD DIST. NO. _____ ILLINOIS FED. AID PROJECT