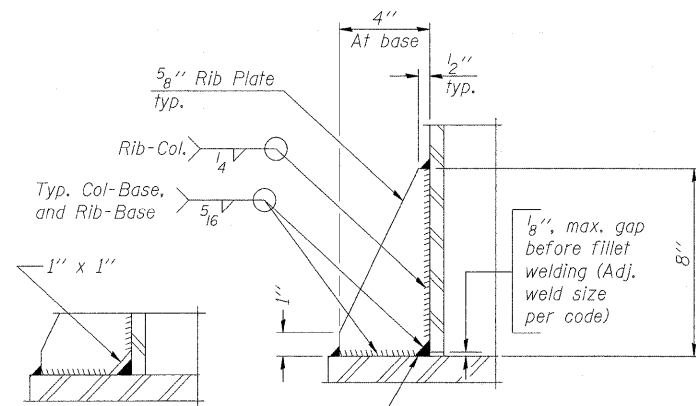
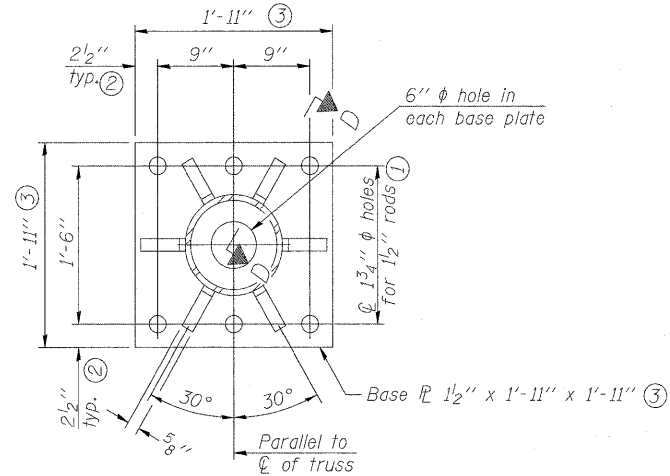
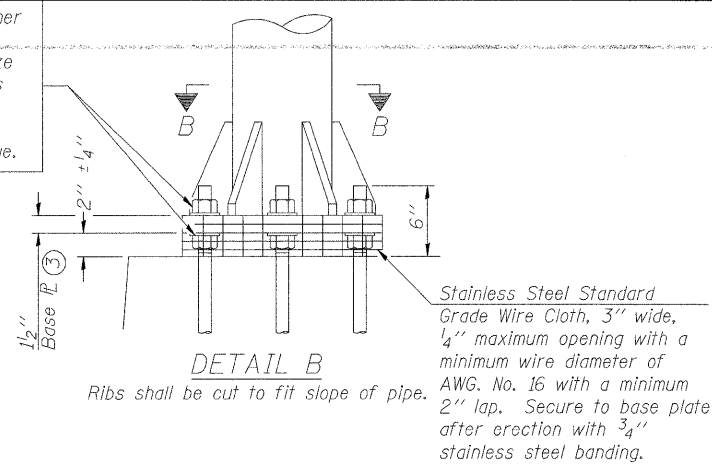
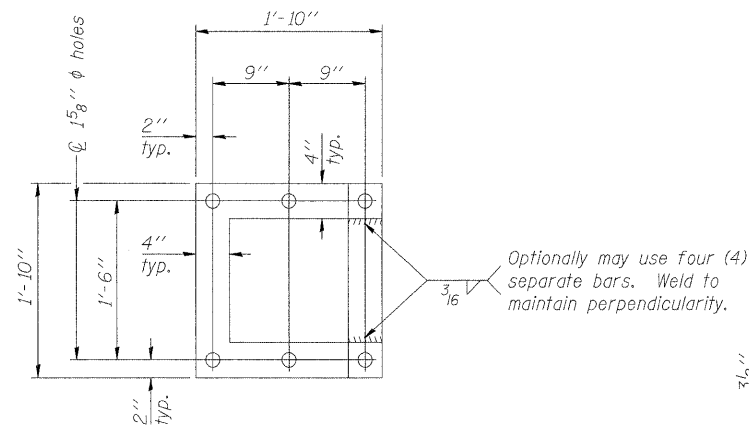


Hexagon locknut and washer (top), leveling nut and washer (bottom). Galvanize per AASHTO M232. Nuts shall each be tightened against base plate with 200 lb.-ft. minimum torque.

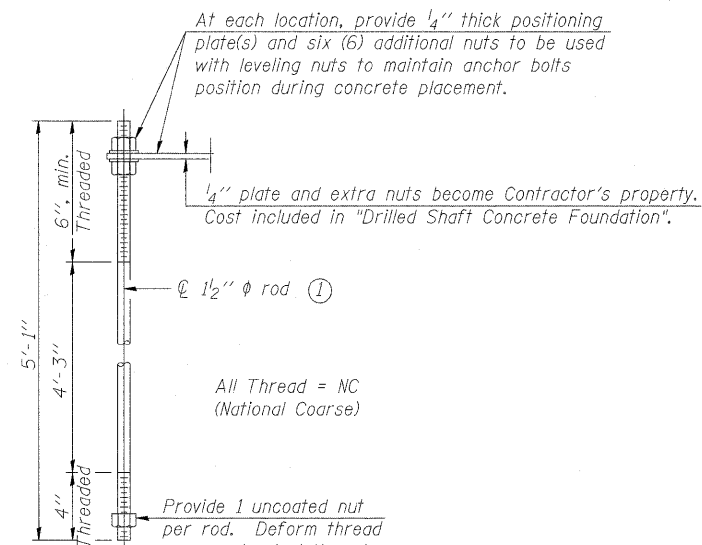


\*\* Alternate detail if welding col. to base plate first, then snip inside corner of ribs. Terminate weld on rib 1/4" from snip.

**SECTION D-D**



**POSITIONING PLATE(S)**



**ANCHOR ROD DETAIL**

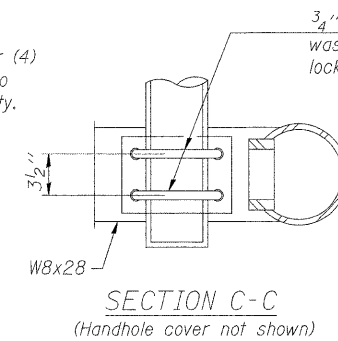
Anchor rods shall conform to AASHTO M314 Grade 36 or 55 and meet Charpy V-Notch (CVN) energy of 15 lb.-ft. at 40° F. Galvanize upper 12" per AASHTO M232. No welding shall be permitted on rods.

**TYPE III-A TRUSS  
12"  $\phi$  PIPE SUPPORT FRAME DETAILS**

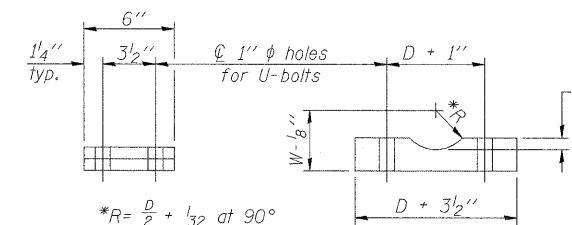
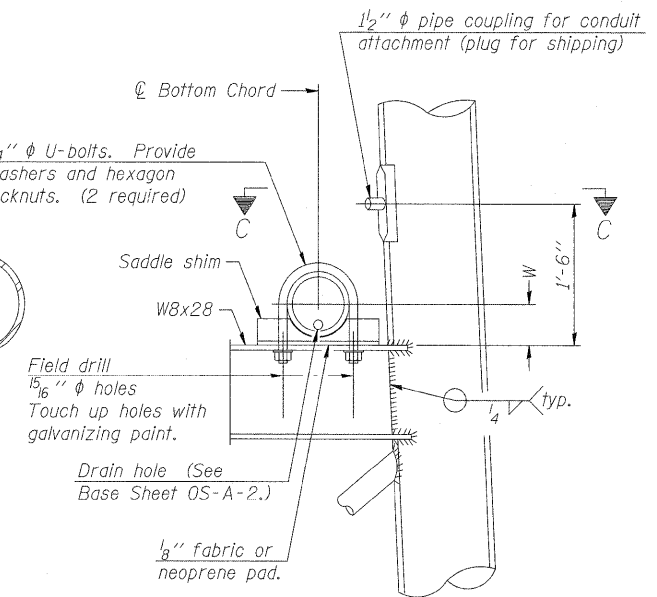
Notes:  
For Type III-A Truss spans greater than 150 ft. and up to 160 ft.:

- ① 1 3/4"  $\phi$  rod, 2"  $\phi$  holes
- ② 2 3/4" edge distance
- ③ Base Pl. 1 5/8" x 1'-11 1/2" x 1'-11 1/2"

NUMBER	REVISION	DATE



**SECTION C-C**  
(Handhole cover not shown)



Truss Chord Nominal Dia.	a
7"	1"
8 1/2"	1 1/4"
9"	1 3/8"

**SADDLE SHIM DETAIL**

ASTM B26 Alloy 356-F  
or  
ASTM B209 Alloy 6061-T651  
(4 required per sign truss)

OS4-A-80A

12-1-08

FILE NAME = #FILE#	USER NAME = #USER#	DESIGNED - ---	REVISED - ---	STATE OF ILLINOIS DEPARTMENT OF TRANSPORTATION	OVERHEAD SIGN STRUCTURES SUPPORT FRAME FOR TYPE III-A ALUMINUM TRUSS	F.A.I. RTE. 64	SECTION Dist 8 ITS 2010-3	COUNTY ST CLAIR	TOTAL SHEETS 14	SHEET NO. 9	
PLOT SCALE = #SCALE#	CHECKED - ---	REVISOR - ---	SCALE: _____			SHEET NO. _____ OF _____ SHEETS	STA. _____ TO STA. _____	FED. ROAD DIST. NO. - ILLINOIS FED. AID PROJECT		CONTRACT NO. 76C64	
PLOT DATE = #DATE#	DATE - ---	REVISOR - ---									
		DATE - ---									