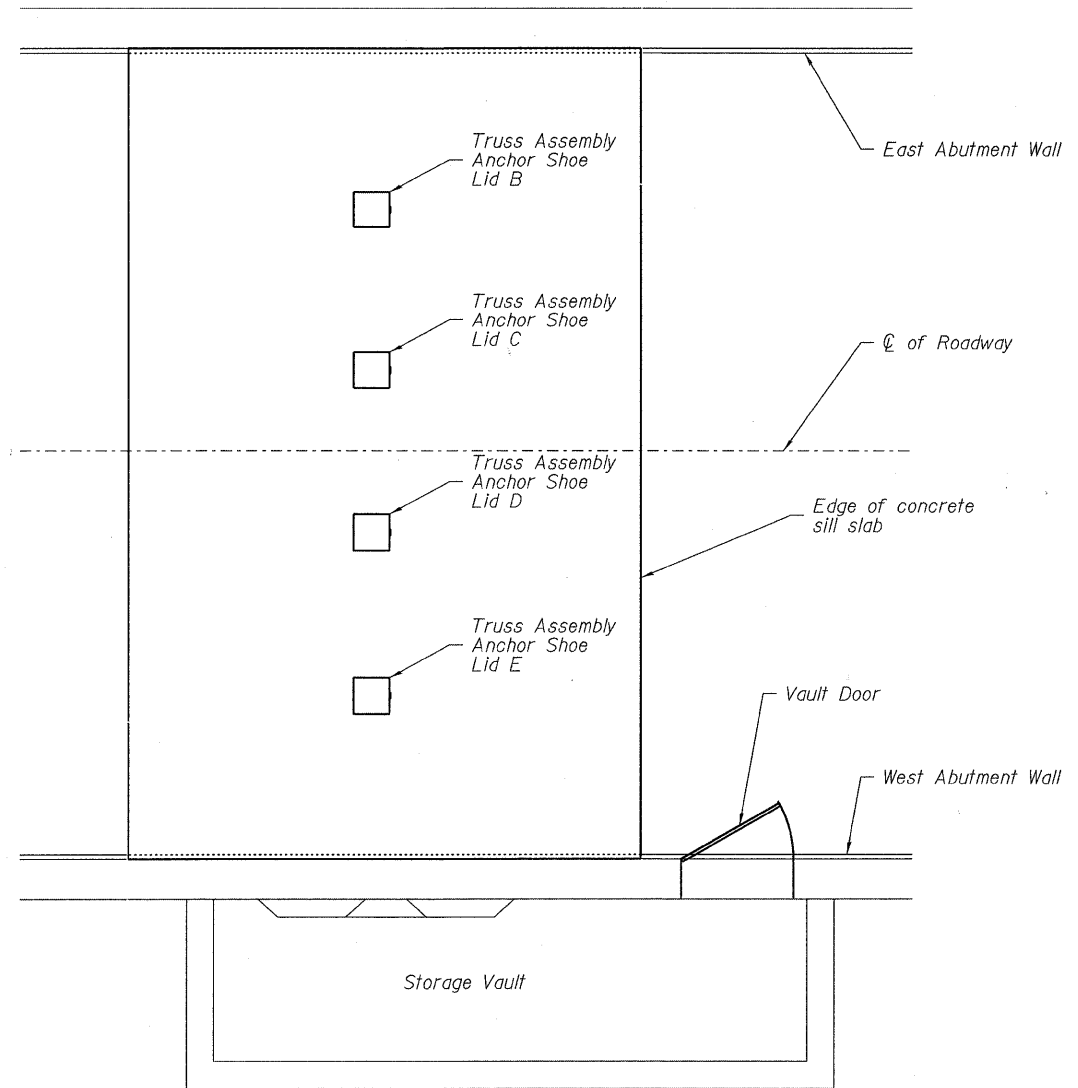
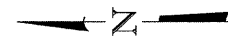
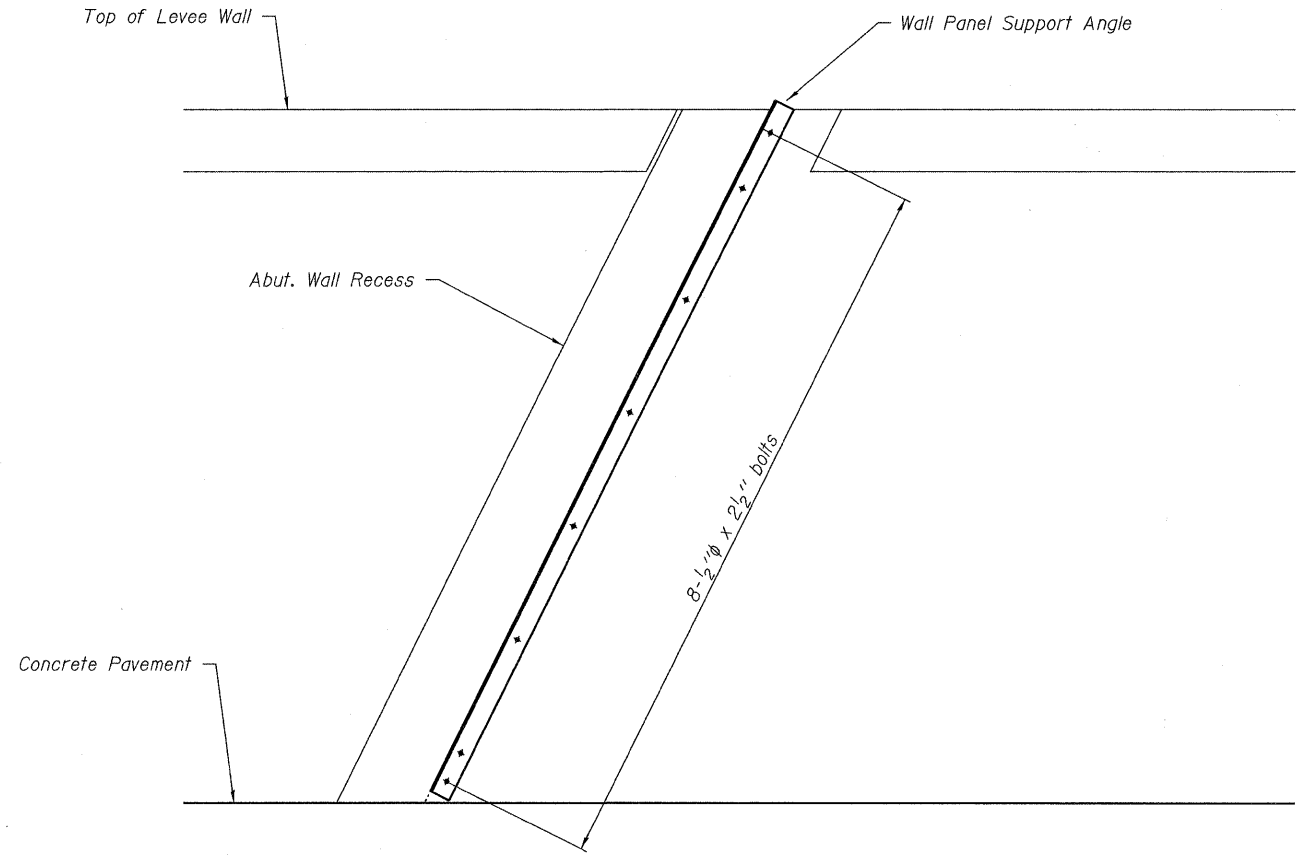


FIGURE A



TRUSS ANCHOR SHOES LID REMOVAL
(Remove 6-bolts per lid)


FIGURE B



WALL PANEL SUPPORT ANGLE ERECTION

| |
|--------------------------|
| DESIGNED - T.P.L. |
| CHECKED - M.D.C., S.M.S. |
| DRAWN - P.J.L. |
| CHECKED - J.L.B. |

ASSEMBLY INSTRUCTIONS
TRUSS ASSEMBLY PLAN
MOVABLE LEVEE CLOSURE STRUCTURE

| | | | | | | |
|--|-----------------------------|---------------------|-----------|------------------|--------------------|-----------|
| HAMPTON, LENZINI & RENWICK, INC. CIVIL & STRUCTURAL ENGINEERS LAND SURVEYORS  3085 STEVENSON DRIVE, SUITE 201 SPRINGFIELD, ILLINOIS 62703 (217) 546-3400 PROJECT NUMBER: 08.0214.130 DATE: 10/01/09 | SHEET NO. 2 8 SHEETS | FAP | SECTION | COUNTY | TOTAL SHEETS | SHEET NO. |
| | | 869 | (105)RS-2 | SALINE | 82 | 51 |
| | | IL-34 HARRISBURG | | | CONTRACT NO. 78079 | |
| | | FED. ROAD DIST. NO. | ILLINOIS | FED. AID PROJECT | | |