

F.A. RTE.	SECTION	COUNTY	TOTAL SHEETS	SHEET NO.
849	113B-1	JEFFERSON	24	1
FED. ROAD DIST. NO.		ILLINOIS	CONTRACT NO. 78085	

STATE OF ILLINOIS
DEPARTMENT OF TRANSPORTATION
DIVISION OF HIGHWAYS

**PROPOSED
HIGHWAY PLANS**

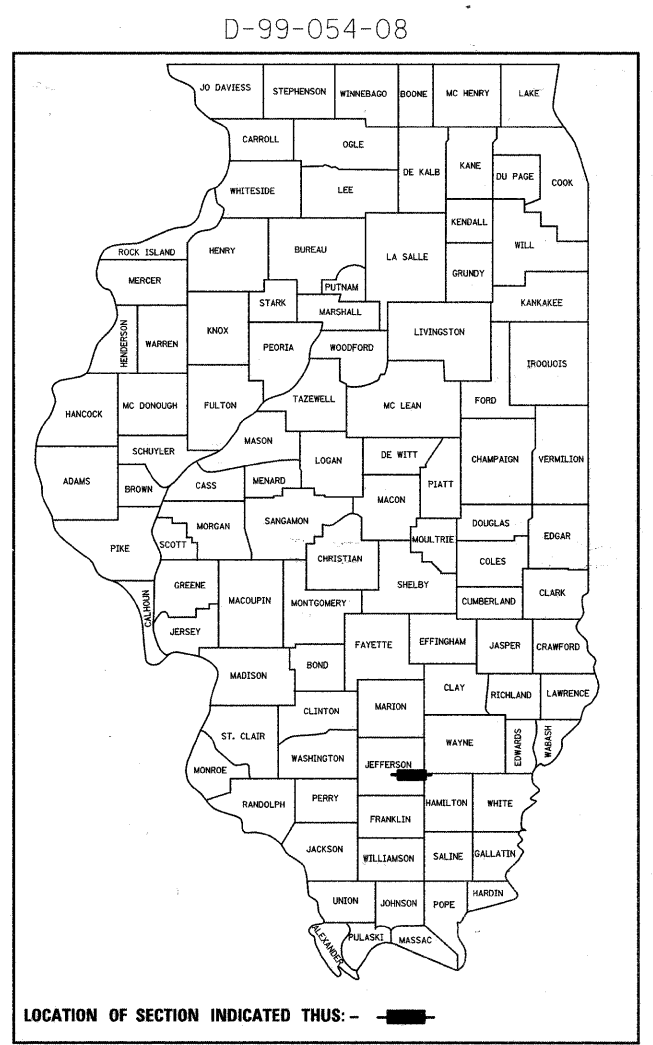
FAP ROUTE 849 (IL 142)
SECTION 113B-1
JEFFERSON COUNTY
C-99-072-08

PROJECT: F-0849(012)

STRUCTURE REPLACEMENT OVER UNNAMED STREAM

FOR INDEX OF SHEETS, SEE SHEET NO. 2
FOR SUMMARY OF QUANTITIES, SEE SHEET NO. 3

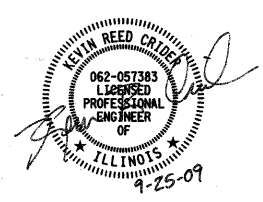
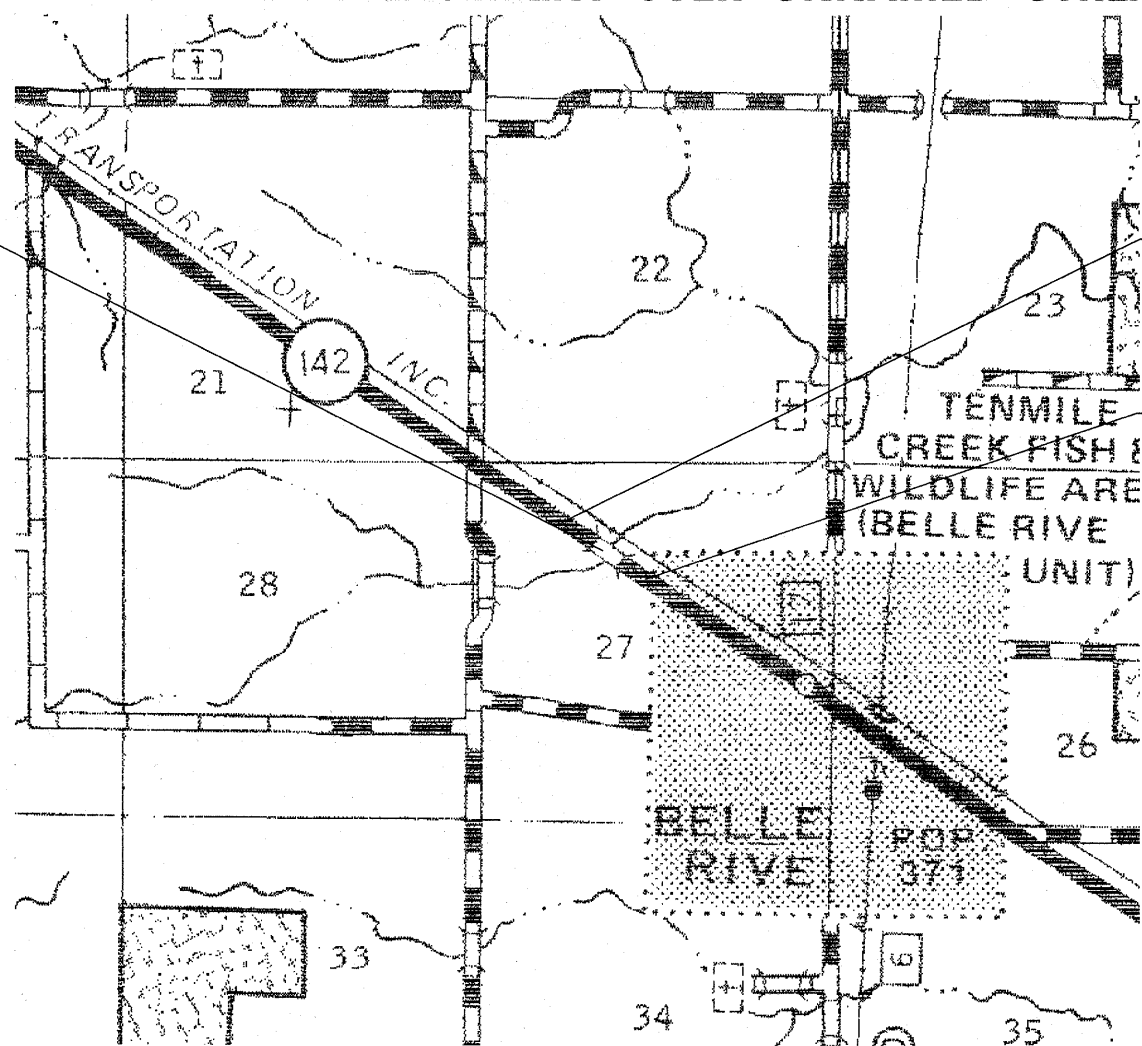
TRAFFIC DATA:
2007 ADT FOR FAP 849 (IL 142)
2,910 WITH 7.4 % TRUCKS



PROPOSED CULVERT ON IL 142
OVER UNNAMED STREAM
STRUCTURE NO. 041-2017
TRIPLE BARREL 9'X8' BOX CULVERT;
50'-11 1/2" OUT TO OUT
@ RIGHT ANGLES: 10° SKEW
STRUCTURE C STA 536+32.00
EX. STRUCTURE NO. 041-0045

PROJECT BEGINS
STA. 535+95.00

PROJECT ENDS
STA. 536+70.00



GEOTECH
ENGINEERING & TESTING, INC.

601 NORTH 4th STREET MURRAY, KENTUCKY 42071
500 SOUTH 17th STREET PADUCAH, KENTUCKY 42003
403 NORTH COURT STREET MARION, ILLINOIS 62959

PHONE - 270.753.7307 PHONE - 270.443.1995 PHONE - 618.997.9190

WWW.GEOTECHENGINEERS.NET COPYRIGHT © 2009 - GEOTECH ENGINEERING & TESTING, INC.

STATE OF ILLINOIS
DEPARTMENT OF TRANSPORTATION
DIVISION OF HIGHWAYS

SUBMITTED Oct 13 20 09

Mary C. Kamin
DEPUTY DIRECTOR OF HIGHWAYS, REGION ENGINEER

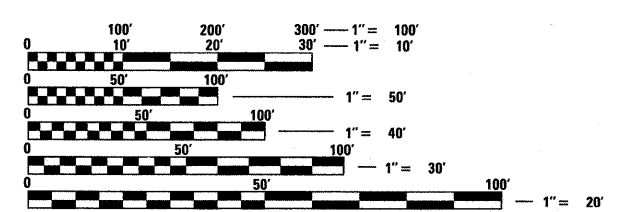
December 4, 2009
Charles A. Ingersoll
ENGINEER OF DESIGN AND ENVIRONMENT

December 4, 2009
Christine M. Reed
DIRECTOR OF HIGHWAYS, CHIEF ENGINEER

**PRINTED BY THE AUTHORITY
OF THE STATE OF ILLINOIS**

FAP RTE 849 (IL 142)
GROSS LENGTH OF PROJECT: 75 FT.
SN 041-2017
ROADWAY LENGTH = 45'-4"
CULVERT LENGTH = 29'-8"
NET LENGTH OF PROJECT: 75 FT.

TOWNSHIPS: PENDLETON



FULL SIZE PLANS HAVE BEEN PREPARED USING STANDARD
ENGINEERING SCALES. REDUCED SIZED PLANS WILL NOT
CONFORM TO STANDARD SCALES. IN MAKING MEASUREMENTS
ON REDUCED PLANS, THE ABOVE SCALES MAY BE USED.

J.U.L.I.E.
JOINT UTILITY LOCATION INFORMATION FOR EXCAVATION
1-800-892-0123
OR 811

CONTRACT NO. 78085

PROJECT ENGINEER: DAVID PICHE (618) 549-2171