

STATE OF ILLINOIS
DEPARTMENT OF TRANSPORTATION

(Back)
4-#9 h₂ bars at 11" cts. Short Wing
4-#9 h₅ bars at 10" cts. Long Wing

(Front)
9-#9 h₂ bars at 11" cts. Short Wing
10-#9 h₅ bars at 10" cts. Long Wing

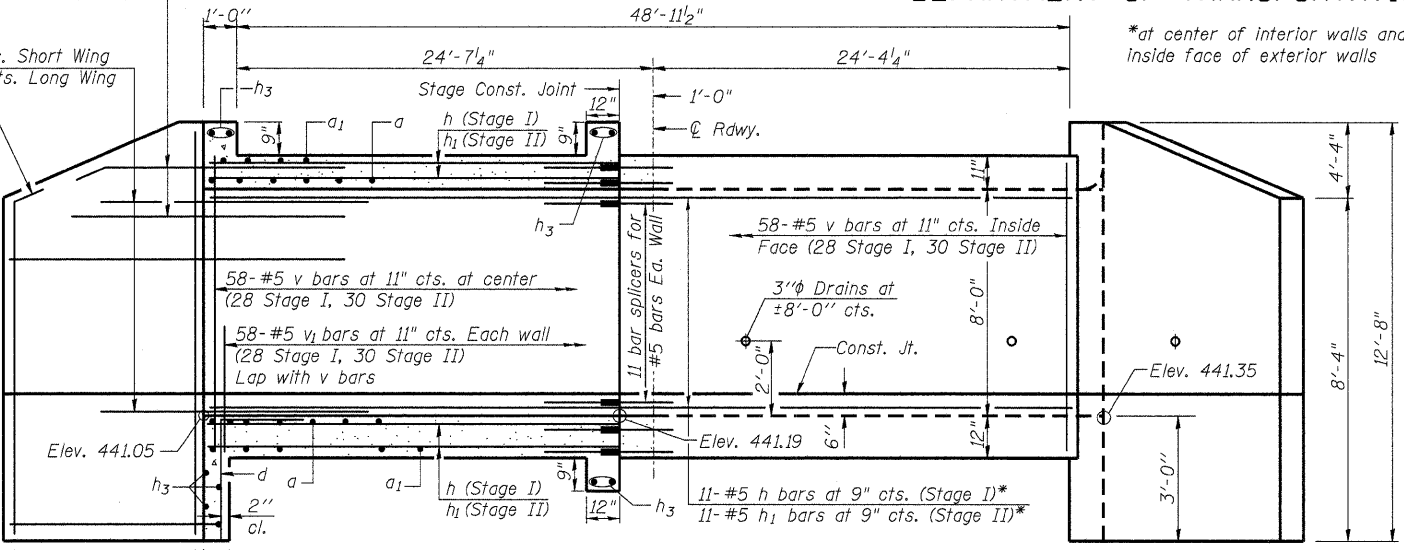
Bend in Field, typ.

Long Wing
Short Wing

11-#9 h₄ bars at 10" cts.
10-#9 h₆ bars at 11" cts.

(Back)
(Back)

4-#4 v₂ bars
Ea. Wing
See Plan View



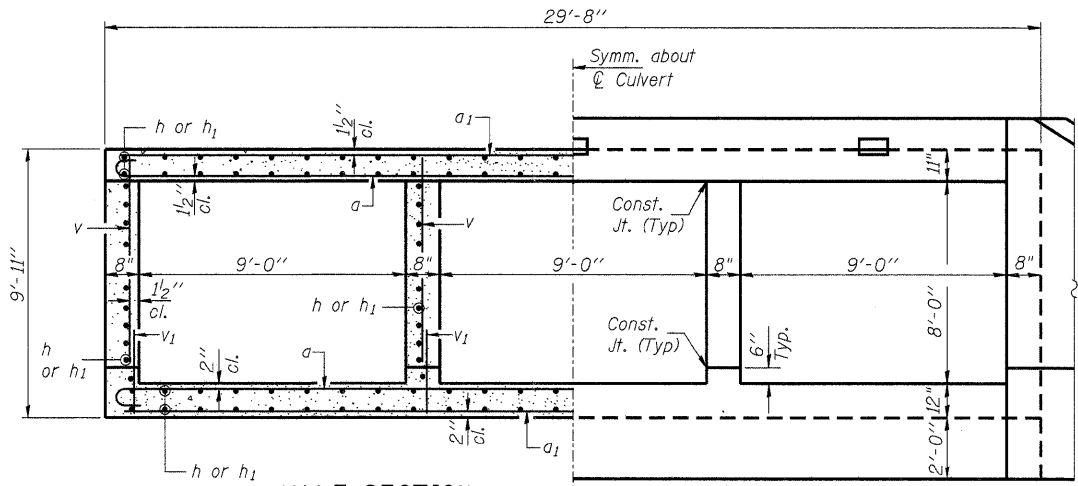
HALF LONG SECTION

Showing bars in Center Wall

HALF ELEVATION

Showing bars in Outside Wall

Dimensions are at right angles to \perp Roadway



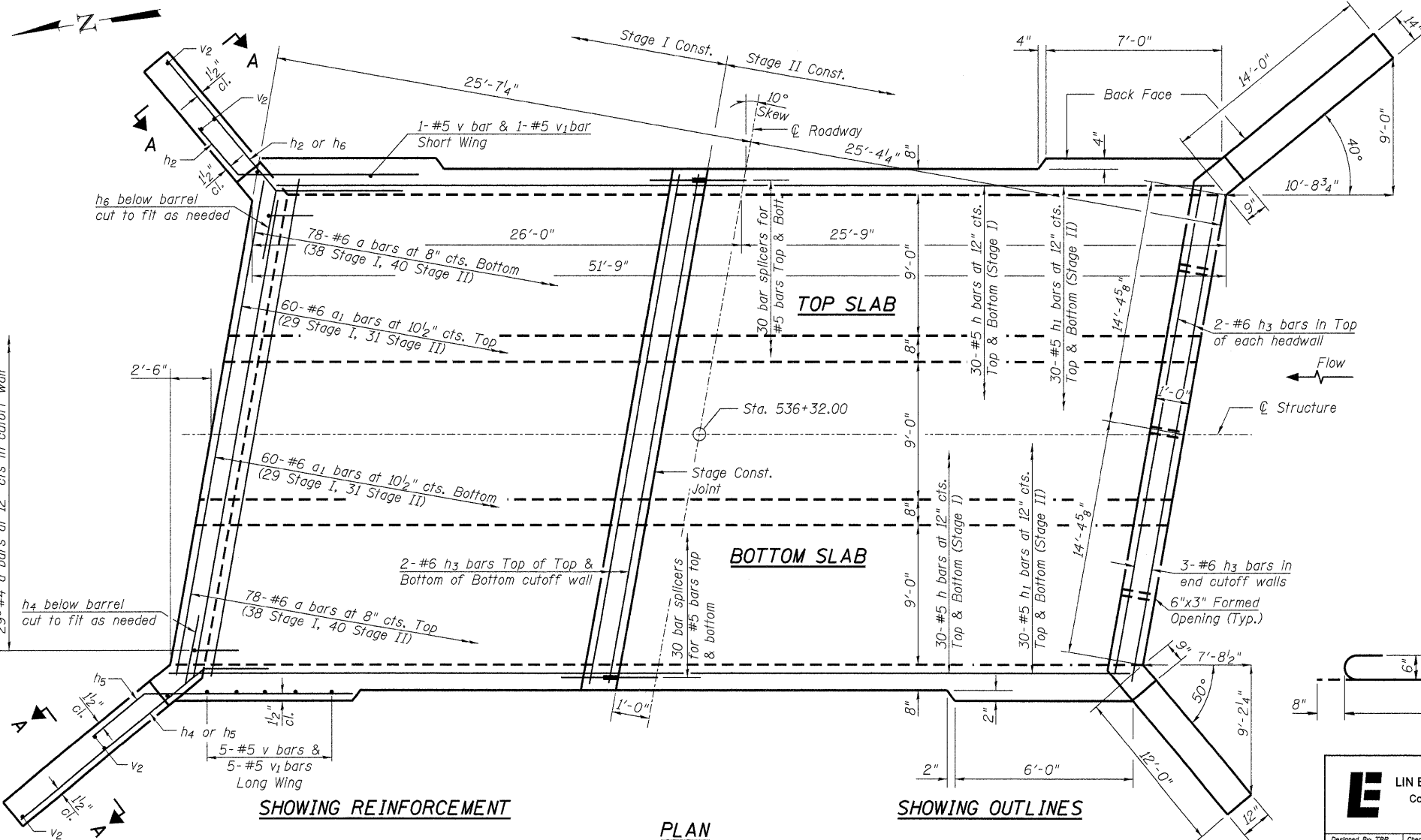
HALF SECTION THRU BARRELS

(Dimensions at right angles to \perp Structure)

HALF END ELEVATION

Notes:

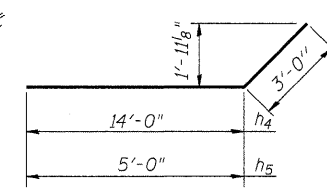
A distance of half the length of the wingwall but not less than six feet of the barrel shall be poured monolithically with the wingwalls.



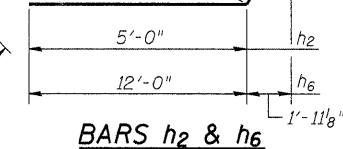
SHOWING REINFORCEMENT

PLAN

SHOWING OUTLINES



BARS h₄ & h₅



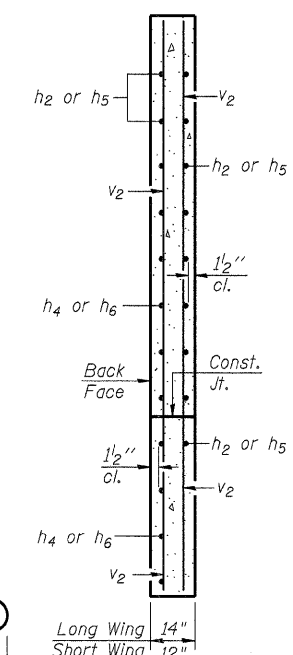
BARS h₂ & h₆



BAR d



BAR a



SECTION A-A

BILL OF MATERIAL

Bar	No.	Size	Length	Shape
a	156	#6	31'-2"	U
a ₁	120	#6	29'-6"	—
d	58	#4	4'-6"	L
h	164	#5	24'-9"	—
h ₁	164	#5	26'-6"	—
h ₂	26	#9	8'-0"	—
h ₃	14	#6	29'-8"	—
h ₄	22	#9	17'-0"	—
h ₅	28	#9	8'-0"	—
h ₆	20	#9	15'-0"	—
v	244	#5	8'-2"	—
v ₁	244	#5	4'-0"	—
v ₂	16	#4	12'-5"	—
Concrete Box Culverts			Cu. Yd.	180.5
Reinforcement Bars			Pound	29180

**CULVERT DETAILS
STRUCTURE NO. 041-2017**

<p>LIN ENGINEERING, LTD. Consulting Engineers Chatham, Illinois</p>	SHEET NO. 3	F.A.P. RTE. 849	SECTION 113-B	COUNTY JEFFERSON	TOTAL SHEETS 24	SHEET NO. 16
	6 SHEETS	CONTRACT NO. 78085				
FED. ROAD DIST. NO.		ILLINOIS FED. AID PROJECT				