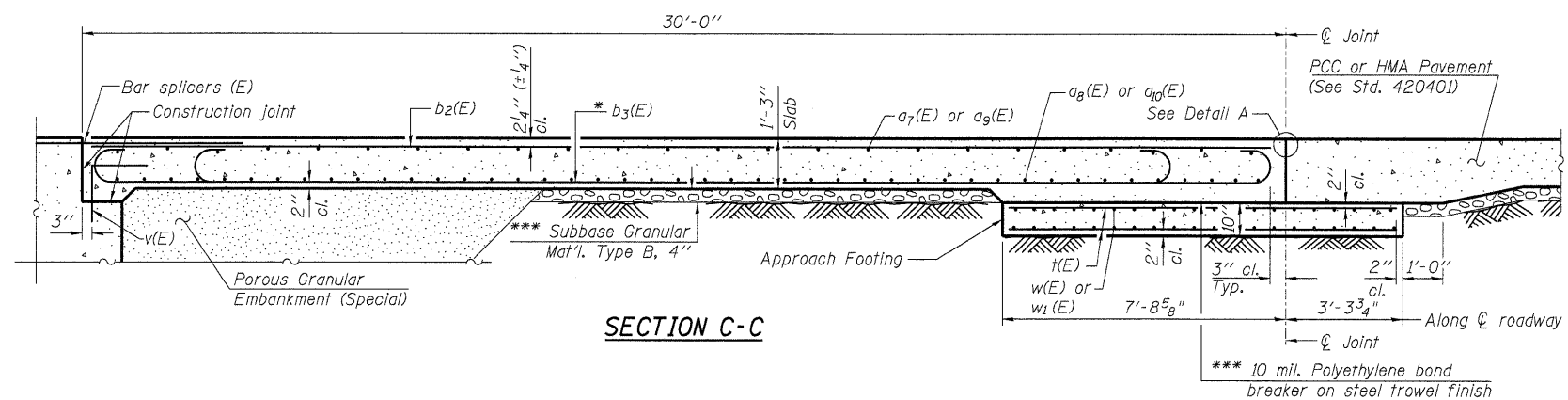


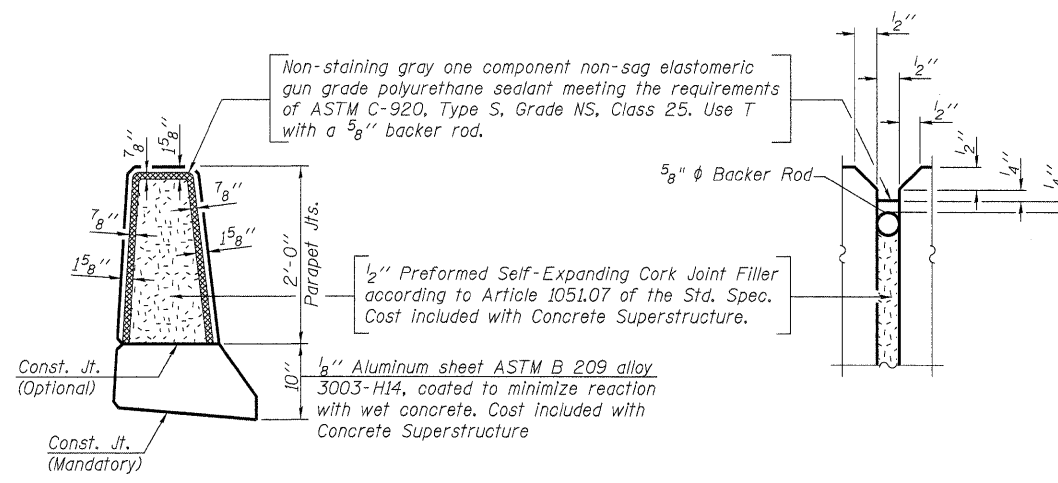
STATE OF ILLINOIS
DEPARTMENT OF TRANSPORTATION

Notes:

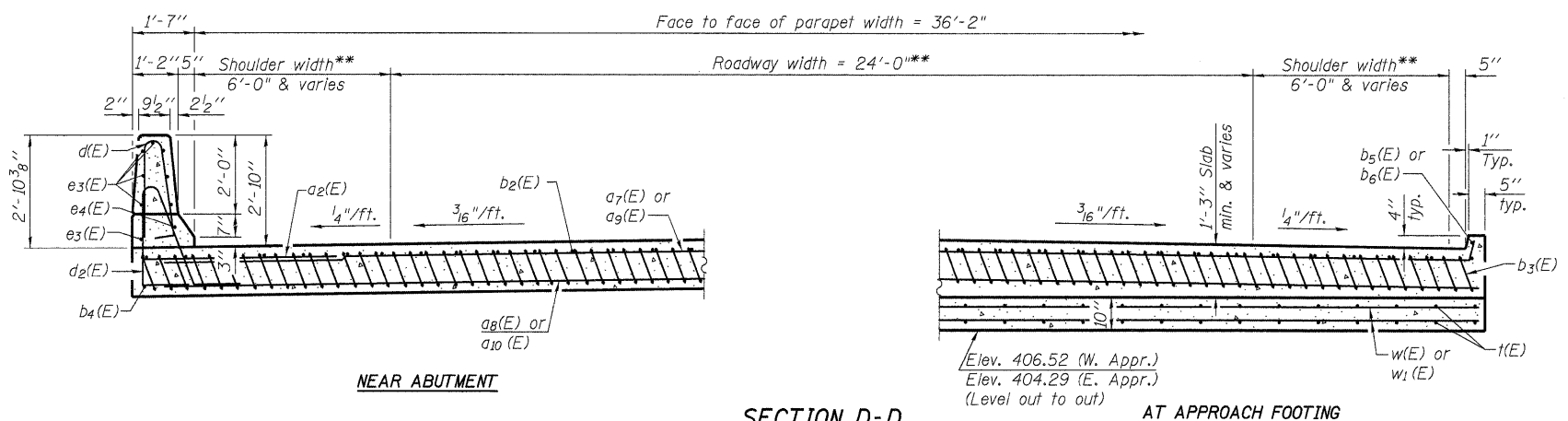
See sheet 9 of 17 for Detail A and View B-B.
Approach slab and parapet concrete shall be paid for as Concrete Superstructure.
Approach footing concrete shall be paid for as Concrete Structures.
Reinforcement shall be paid for as Reinforcement Bars, Epoxy Coated.
For v(E) bar details, see sheet 8 of 17.
The approach footing maximum applied service bearing pressure (Qmax) = 2.0 ksf.
For bar splicer details, see sheet 15 of 17.
Cost of excavation for approach footing included with Concrete Structures.
For Porous Granular Embankment (Special) and drainage treatment details, see sheet 2 of 17.



SECTION C-C



PARAPET JOINT DETAILS



NEAR ABUTMENT

SECTION D-D

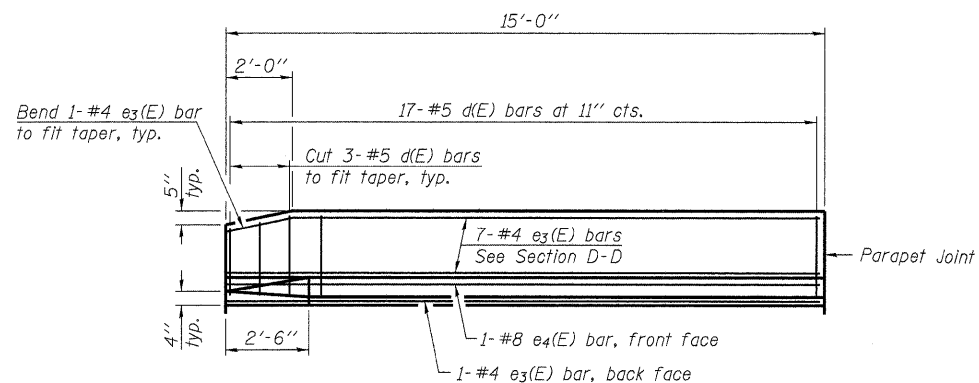
AT APPROACH FOOTING

(See Plan for dimensions not shown)

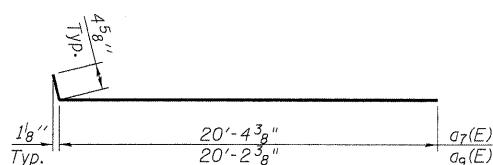
* Tilt #9 b3(E) bars as required to maintain clearance.
** Measured radially.
*** Cost included with Concrete Superstructure.

TWO APPROACHES
BILL OF MATERIAL

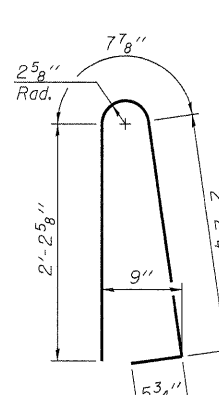
Bar	No.	Size	Length	Shape
a2(E)	48	#6	6'-0"	—
a7(E)	50	#4	20'-9"	—
a8(E)	92	#5	20'-9"	—
a9(E)	50	#4	20'-7"	—
a10(E)	92	#5	20'-7"	—
b2(E)	76	#4	29'-7"	—
b3(E)	178	#9	29'-9"	—
b4(E)	4	#4	14'-8"	—
b5(E)	2	#4	15'-1"	—
b6(E)	2	#4	14'-2"	—
d(E)	68	#5	5'-7"	—
d2(E)	68	#5	7'-11"	—
e3(E)	32	#4	14'-8"	—
e4(E)	4	#8	14'-8"	—
t(E)	160	#4	10'-8"	—
w(E)	80	#5	20'-9"	—
w1(E)	80	#5	20'-7"	—
Concrete Superstructure		Cu. Yd.	116.6	
Concrete Structures		Cu. Yd.	23.4	
Reinforcement Bars, Epoxy Coated		Pound	31420	



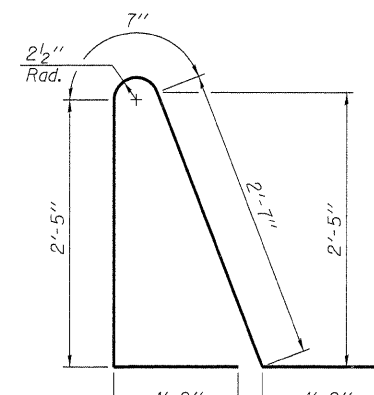
VIEW E-E



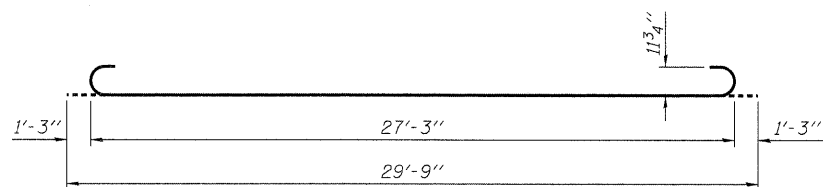
BARS a7(E) and a9(E)



BAR d(E)



BAR d2(E)



BAR b3(E)

BRIDGE APPROACH SLAB DETAILS-2
STRUCTURE NO. 028-0084

<p>LIN ENGINEERING, LTD. Consulting Engineers Chatham, Illinois</p>	SHEET NO. 10	F.A.P. RTE.	SECTION	COUNTY	TOTAL SHEETS	SHEET NO.
	17 SHEETS	869	101B-1	FRANKLIN	40	25
		CONTRACT NO. 78086				
		FED. ROAD DIST. NO.		ILLINOIS		FED. AID PROJECT