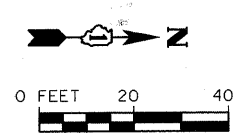
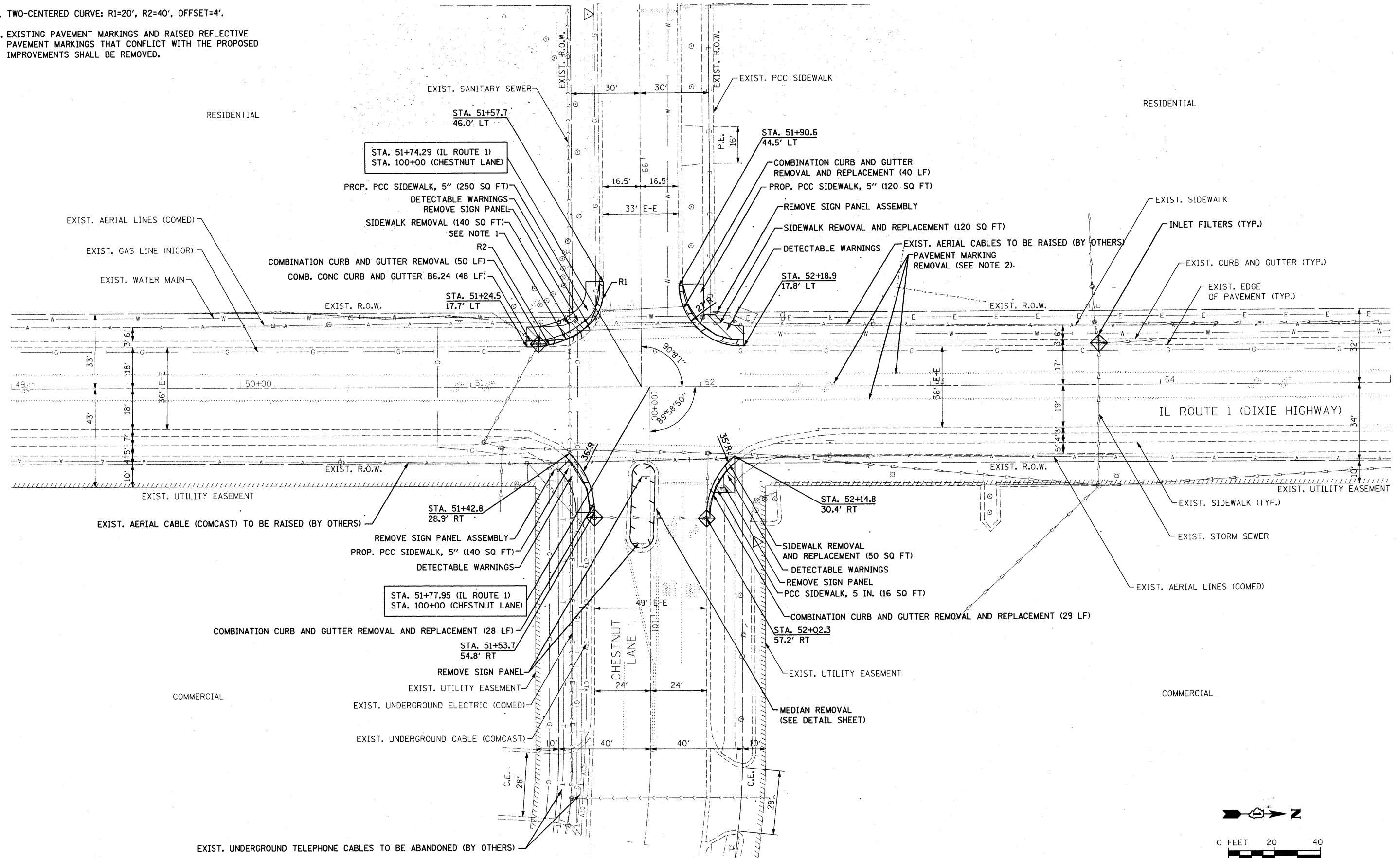


NOTES:

- TWO-CENTERED CURVE: R1=20', R2=40', OFFSET=4'.
- EXISTING PAVEMENT MARKINGS AND RAISED REFLECTIVE PAVEMENT MARKINGS THAT CONFLICT WITH THE PROPOSED IMPROVEMENTS SHALL BE REMOVED.



FILE NAME: s:\1\165988-6999\6988-003\micro\sheet\roadplan\plan.dgn

STRAND ASSOCIATES, INC.
ENGINEERS

1170 SOUTH HOUBOLT ROAD
JOLIET, ILLINOIS 60431
(815) 744-4200

USER NAME = kind-as	DESIGNED -	REVISED -
PLOT SCALE = 20.0000' / IN.	DRAWN -	REVISED -
PLOT DATE = 10/16/2009	CHECKED -	REVISED -
	DATE -	REVISED -

**STATE OF ILLINOIS
DEPARTMENT OF TRANSPORTATION**

ROADWAY PLAN			
IL ROUTE 1 (DIXIE HIGHWAY) AND CHESTNUT LANE			
SCALE: AS SHOWN	SHEET NO.	OF SHEETS	STA. TO STA.

F.A.U. RTE.	SECTION	COUNTY	TOTAL SHEETS	SHEET NO.
0332	06-00015-00-TL	WILL	31	5
FED. ROAD DIST. NO. ILLINOIS FED. AID PROJECT			CONTRACT NO. 83909	