

**STATE OF ILLINOIS
DEPARTMENT OF TRANSPORTATION
PLANS FOR PROPOSED LOCAL AGENCY IMPROVEMENT
FEDERAL-AID PROJECT**

FAU 9888/ CH 52 (WILLOWBROOK ROAD)
SECTION 04-00383-00-WR
PROJECT NO. ARA-5099(093)
JOB NO. C-92-170-09
CONTRACT NO. 85472



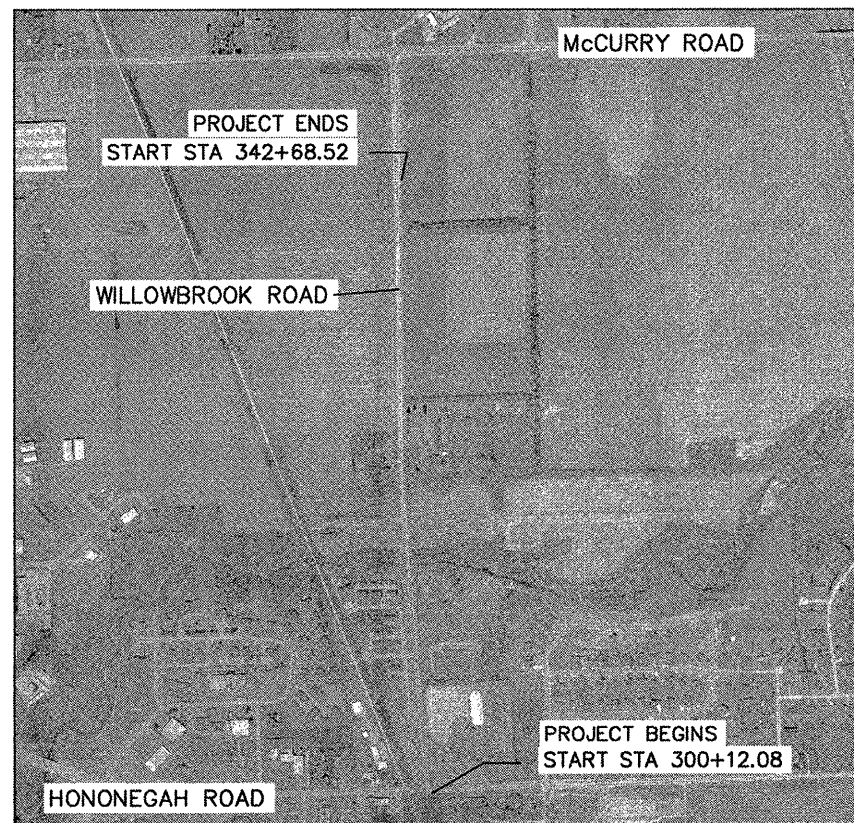
INDEX OF SHEETS

SHEET NO. SHEET NAME

- 1. COVER SHEET
- 2. GENERAL NOTES
- 3. SUMMARY OF QUANTITIES
- 4. SCHEDULE OF QUANTITIES
- 5. TYPICAL SECTIONS & DETAILS
- 6-8. PLAN SHEETS

STANDARDS

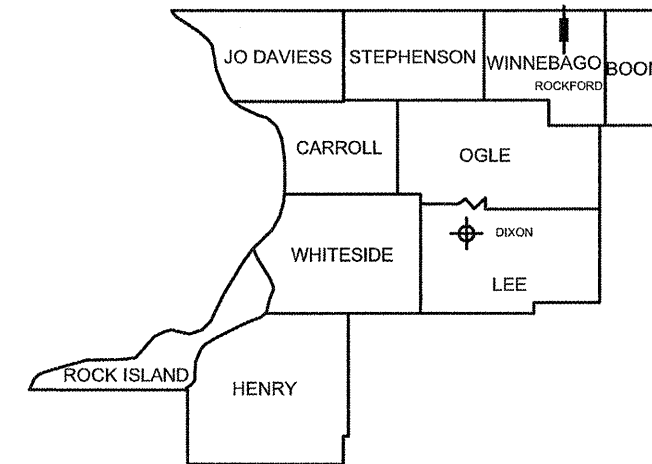
- 406201-01 MAILBOX TURNOUT
- 701001-02 OFF-RD OPERATIONS 2L, 2W,
MORE THAN 15' AWAY
- 701006-03 OFF-RD OPERATIONS 2L, 2W 4.5M (15') TO
PAVEMENT EDGE FOR SPEEDS \geq 45 MPH
- 701101-02 OFF-RD OPERATIONS 2L, 2W, 15' TO 24'
FROM PAVEMENT EDGE
- 701201-03 LANE CLOSURE, 2L, 2W, DAY ONLY FOR
SPEEDS \geq 45 MPH
- 701301-03 LANE CLOSURE, 2L, 2W, SHORT TIME
OPERATIONS
- 701306-02 LANE CLOSURE, 2L, 2W, SLOW MOVING
OPERATIONS DAY ONLY, FOR SPEEDS \geq 45 MPH
- 701311-03 LANE CLOSURE, 2L, 2W, MOVING
OPERATIONS - DAY ONLY
- 701326-03 LANE CLOSURE, 2L, 2W, PAVEMENT
WIDENING FOR SPEEDS \geq 45 MPH
- 701901-01 TRAFFIC CONTROL DEVICES
- 720011-01 METAL POSTS FOR SIGNS,
MARKERS & DELINEATORS
- 728001-01 TELESCOPING STEEL SIGN SUPPORT
- 780001-02 TYPICAL PAVEMENT MARKINGS
- 729001-01 APPLICATIONS OF TYPES A&B METAL POSTS
(FOR SIGNS & MARKERS)
- BLR 21-8 TYPICAL APPLICATION OF TRAFFIC CONTROL DEVICES
FOR CONSTRUCTION ON RURAL LOCAL HIGHWAYS



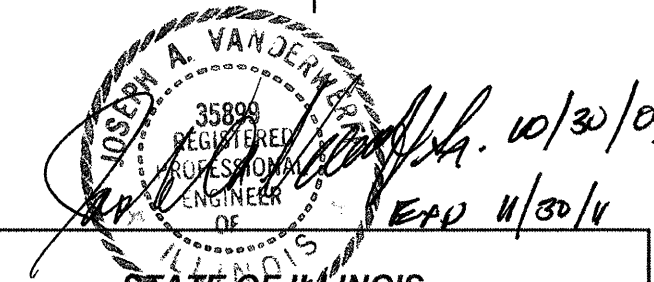
PROJECT LOCATION

WILLOWBROOK ROAD:
NET LENGTH: 4268.5 FT (0.80 MILES)
ADT : 3,100 (2009) TRUCK: 2%
RURAL COLLECTOR
45 MPH DESIGN SPEED

CALL J.U.L.I.E.
BEFORE YOU DIG
1-800-892-0123
T.46 N. - R.2 E.
SEC. 28



⊕ DISTRICT HEADQUARTER | PROJECT LOCATION



**STATE OF ILLINOIS
DEPARTMENT OF TRANSPORTATION
DIVISION OF HIGHWAYS**

APPROVED October 30 20 09
[Signature]
WINNEBAGO COUNTY ENGINEER

PASSED NOV 12 2009 20
[Signature]
DISTRICT 2 ENGINEER OF LOCAL ROADS & STREETS

RELEASING FOR BID
BASED ON LIMITED
REVIEW NOV 12 2009 20
[Signature]
DEPUTY DIRECTOR OF HIGHWAYS, REGION 2 ENGINEER