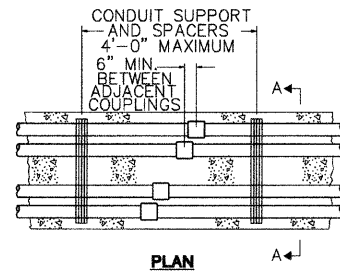


SECTION A-A SECTION B-B

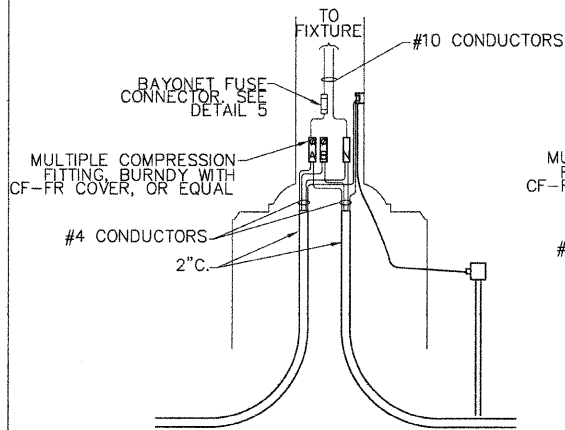


PLAN

NOTES:  
 1. SEE PLANS FOR SIZE AND NUMBER OF CONDUITS AND DUCT BANK ARRANGEMENT.

**11 TYPICAL DUCTBANK DETAIL**

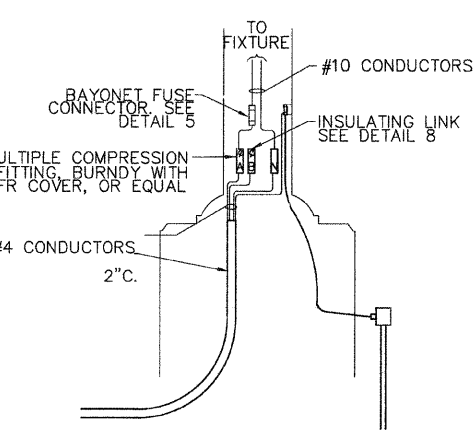
NOT TO SCALE



NOTES:  
 1. PROVIDE SUFFICIENT CONDUCTOR SLACK TO PERMIT WITHDRAWAL OF THE CONDUCTOR THROUGH THE HANDHOLE.  
 2. PHASE CONNECTIONS AS SHOWN ON ONE LINE DIAGRAM.

**12 SPLICE DETAIL #2**

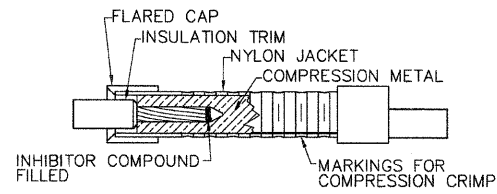
NOT TO SCALE



NOTES:  
 1. PROVIDE SUFFICIENT CONDUCTOR SLACK TO PERMIT WITHDRAWAL OF THE CONDUCTOR THROUGH THE HANDHOLE.  
 2. PHASE CONNECTIONS AS SHOWN ON ONE LINE DIAGRAM.

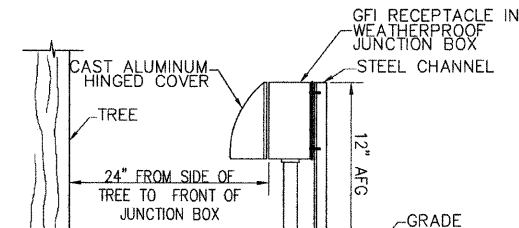
**10 SPLICE DETAIL #1**

NOT TO SCALE

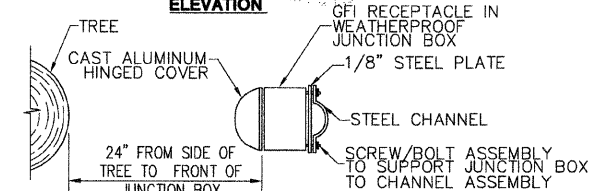


**8 INSULATING LINK DETAIL**

NOT TO SCALE



ELEVATION

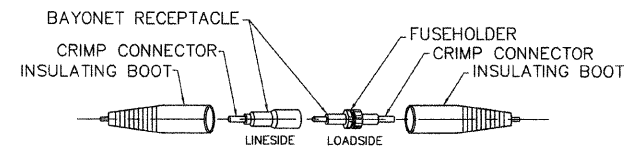


TOP VIEW

NOTES:  
 1. STEEL CHANNEL AND PLATE TO BE PRIMED AND PAINTED. COLOR TO BE DETERMINED PRIOR TO PURCHASE OF EQUIPMENT/DEVICES.

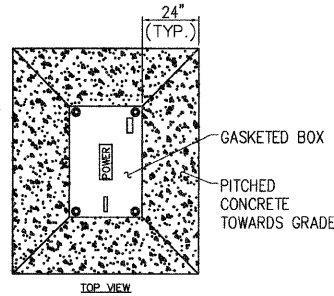
**9 WEATHERPROOF GFI RECEPT. BASE DETAIL**

NOT TO SCALE

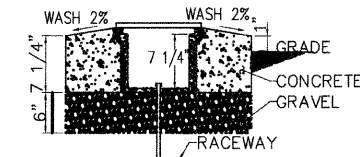


**6 BAYONET FUSE CONNECTOR DETAILS**

NOT TO SCALE



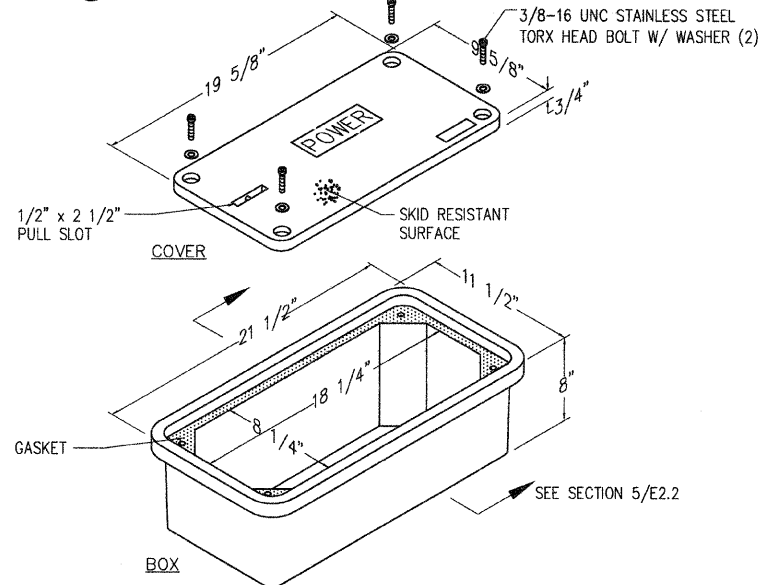
TOP VIEW



NOTE:  
 1. CONDUIT STUB INTO BOX MUST BE AT LEAST THREE INCHES INTO BOX SPACE.

**6 GASKETED BOX - SECTION DETAIL**

NOT TO SCALE



PARTS SCHEDULE		
DESCRIPTION	PART NO.	WEIGHT
COVER W/4 TORX BOLTS	PC0818CG00	11#
BOX W/ NO BASE	PC0818BG08	20#

NOTES:  
 1. COVER LOGO TO STATE: POWER  
 2. BOX AND COVER TO BE MANUFACTURED BY: HUBBELL/QUAZITE (OR EXACT EQUAL APPROVED BY ENGINEER)

**7 8"x18" GASKETED BOX ASSEMBLY DETAIL**

NOT TO SCALE

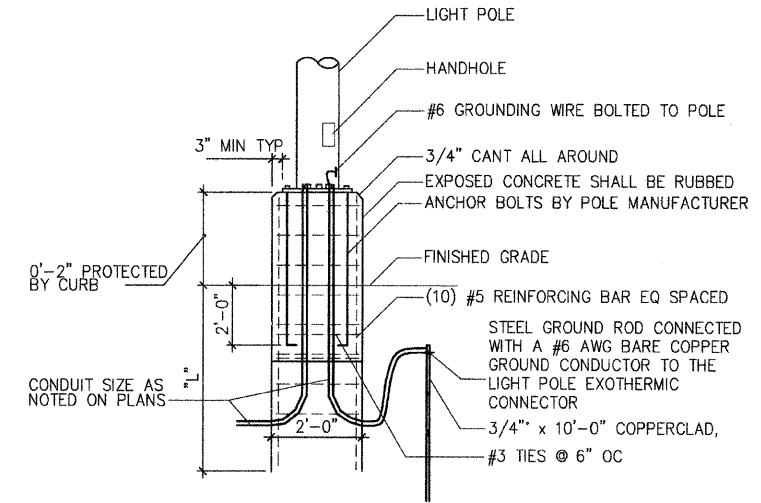
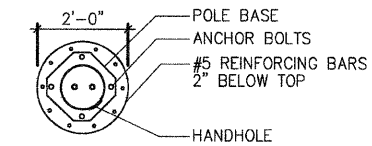
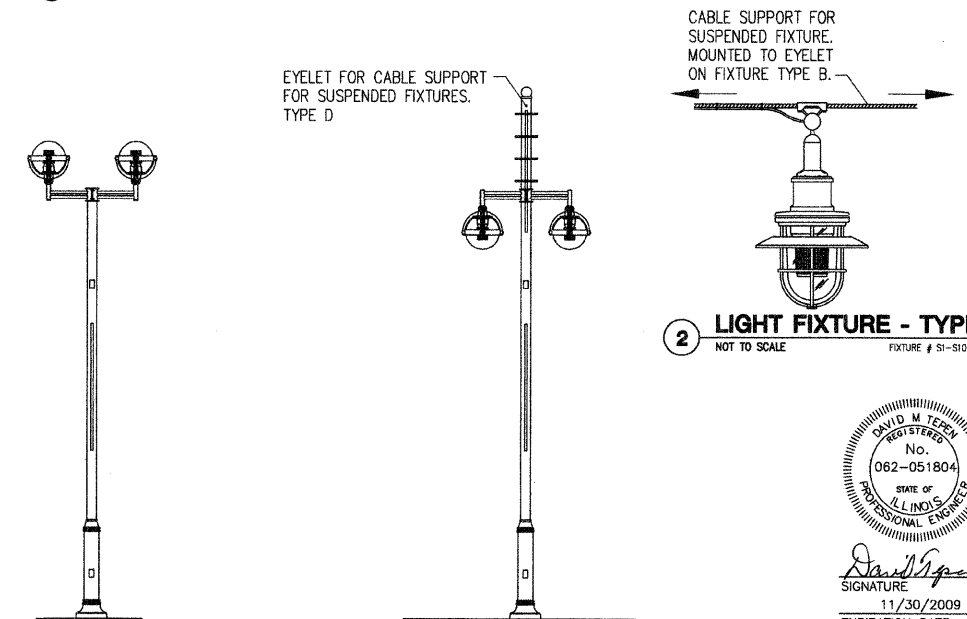


TABLE 1'	
POLE HEIGHT	DEPTH "L"
14'	6'-0"
20'	7'-6"

NOTES:  
 1. USE 3000 PSI 28 DAY STRENGTH CONCRETE FOR POLE BASE.  
 2. PLACE CONCRETE THE SAME DAY BASE IS DRILLED.  
 3. VERIFY ANCHOR BOLT LOCATIONS WITH MANUFACTURER'S TEMPLATE PRIOR TO BASE CONSTRUCTION.

**1 14' & 20' POLE BASE DETAIL**

NOT TO SCALE



**2 LIGHT FIXTURE - TYPE D**

NOT TO SCALE

**4 LIGHT FIXTURE TYPE C (14' POLE)**

NOT TO SCALE

**3 LIGHT FIXTURE TYPE B (20' POLE)**

NOT TO SCALE



David M. Tern  
 SIGNATURE  
 11/30/2009  
 EXPIRATION DATE  
 10-16-09  
 DATE



CITY OF MOLINE  
 DEPARTMENT OF PUBLIC WORKS - ENGINEERING DIVISION  
 3635 4TH AVENUE, MOLINE, IL 61265  
 (309) 797-0700  
 CITY ENGINEER - SCOTT HINTON, P.E.

5TH AVENUE  
 ELECTRICAL DETAILS

Date	Revision

Date	Sheet
09-30-09	33 of 50
Scale	
NOT TO SCALE	
MFT PROJ. #	DESIGNER
09-00242-00RP	DFW