

STATE OF ILLINOIS  
 DEPARTMENT OF TRANSPORTATION  
**PLANS FOR  
 PROPOSED LOCAL AGENCY IMPROVEMENT  
 FEDERAL AID URBAN PROJECT**

**INDEX OF SHEETS**

- 1 COVER SHEET
- 2 TYPICAL SECTION & SUMMARY OF QUANTITIES
- 3-4 SCHEDULE OF QUANTITIES
- 5-6 TRAFFIC CONTROL AND DETOUR PLAN
- 7-8 PLAN SHEET
- 9 PAVEMENT MARKING PLAN

**STATE STANDARDS**

- 442101-07 CLASS B PATCHES
- 606001-04 CONCRETE CURB TYPE B AND COMBINATION CONCRETE CURB AND GUTTER
- 701006-03 OFF-ROAD OPERATIONS, 2L, 2W (15') TO (24") FROM PAVEMENT EDGE
- 701301-03 LANE CLOSURE, 2L, 2W, SHORT TIME OPERATIONS
- 701501-05 URBAN LANE CLOSURE, 2L, 2W, UNDIVIDED
- 701901-01 TRAFFIC CONTROL DEVICES
- 720011-01 METAL POSTS FOR SIGNS, MARKERS AND DELINEATORS
- 728001-01 TELESCOPING STEEL SIGN SUPPORT
- 729001-01 APPLICATIONS OF TYPES A AND B METAL POSTS (FOR SIGNS & MARKERS)
- B.L.R. 21-8 TYPICAL APPLICATION OF TRAFFIC CONTROL DEVICES FOR CONSTRUCTION ON RURAL LOCAL HIGHWAYS
- B.L.R. 22-6 TYPICAL APPLICATION OF TRAFFIC CONTROL DEVICES FOR CONSTRUCTION ON RURAL LOCAL HIGHWAYS (TWO-LANE TWO WAY RURAL TRAFFIC)(ROAD CLOSED TO THRU TRAFFIC)

**BEFORE YOU DIG CALL J.U.L.I.E.  
 1-800-892-0123**

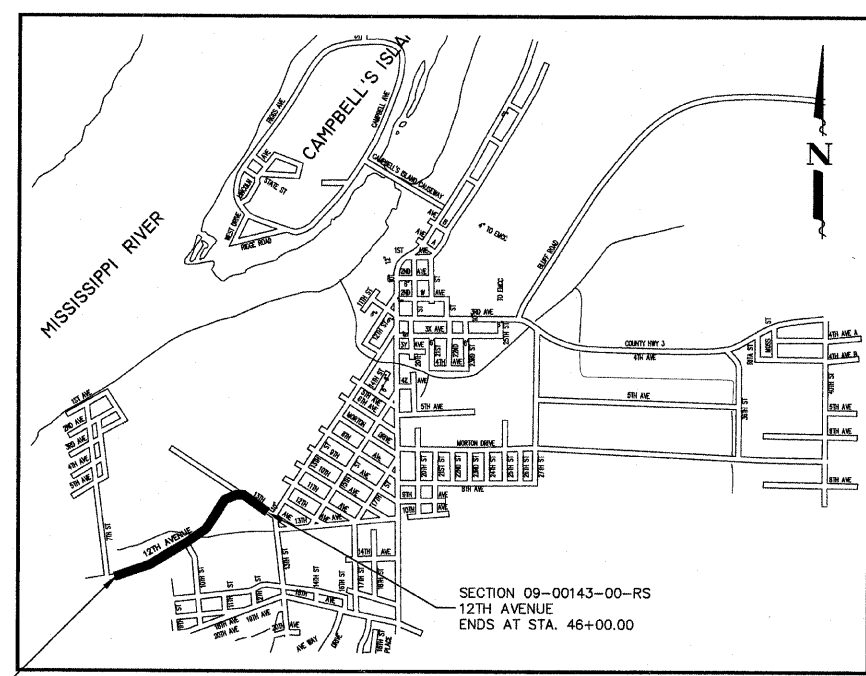
**UTILITY NOTE**

THE LOCATION OF EXISTING UTILITIES ARE SHOWN ON THE PLANS FOR INFORMATION ONLY AND REPRESENT TO THE BEST KNOWLEDGE OF THE ENGINEER. IT SHALL BE THE CONTRACTOR'S RESPONSIBILITY TO VERIFY ALL UTILITY LOCATIONS. FORTY-EIGHT (48) HOUR NOTICE MUST BE GIVEN TO ALL UTILITY COMPANIES PRIOR TO THE START OF ANY CONSTRUCTION OPERATIONS.

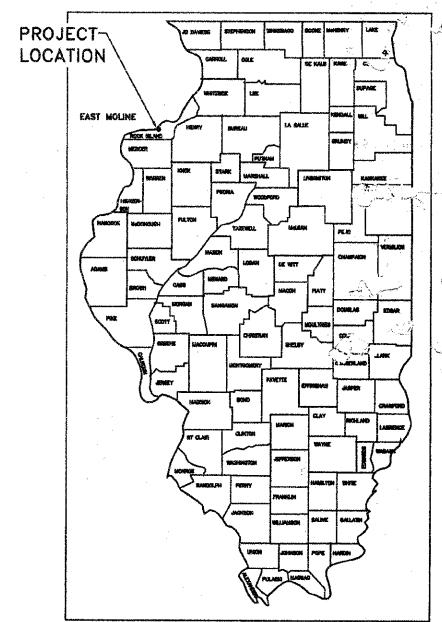
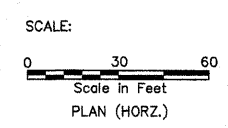
- MID AMERICAN ENERGY (GAS & ELECTRIC)  
 106 EAST SECOND STREET  
 DAVENPORT, IOWA 52801
- SBC (TELEPHONE)  
 635 18TH STREET  
 ROCK ISLAND, ILLINOIS 61201
- CITY OF EAST MOLINE (WATER & SEWER)  
 PUBLIC SERVICE DEPARTMENT  
 1200 13TH AVENUE  
 EAST MOLINE, ILLINOIS 61244
- MEDIACOM (CABLE TV)  
 3900 26TH AVENUE  
 MOLINE, IL 61265

Closed ROAD ADT = 150

CITY OF EAST MOLINE  
 FAU 5755 (12TH AVENUE)  
 SECTION 09-00143-00-RS  
 PROJECT NO. ARA-5074(084)  
 JOB NO. C-92-183-09  
 CONTRACT 85489  
 2009



**LOCATION MAP**  
 NET LENGTH: 3,198 FEET = 0.61 MILES  
 ADT: 8500 (2009); 15% TRUCKS  
 MINOR ARTERIAL  
 LAPP POLICY



**STATE LOCATION MAP**

CITY OF EAST MOLINE	
APPROVED	11-06-09 DATE
	<i>[Signature]</i> LOCAL AGENCY, POSITION
PASSED	NOV 18 2009 DATE
	<i>[Signature]</i> DISTRICT 2 ENGINEER OF LOCAL ROADS & STREETS
RELEASING FOR BID BASED ON LIMITED REVIEW	NOV 18 2009 DATE
	<i>[Signature]</i> DEPUTY DIRECTOR OF HIGHWAYS, REGION 2 ENGINEER

PLANS PREPARED BY:

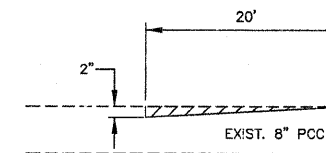
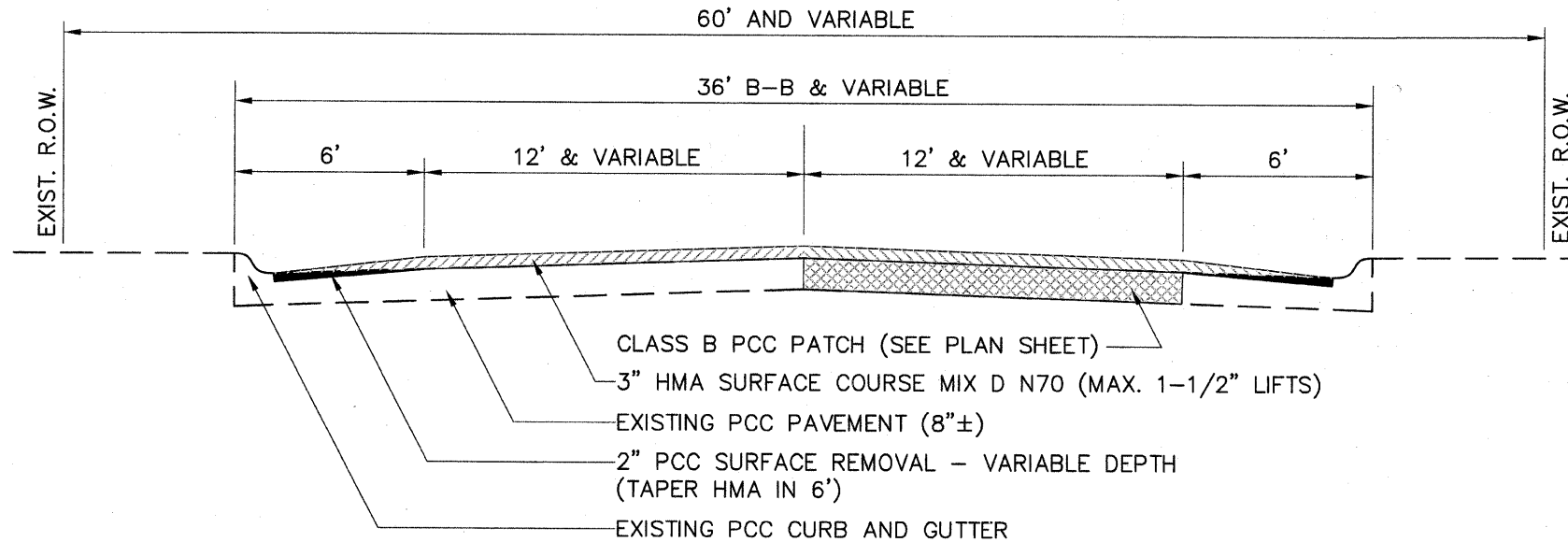
*[Signature]*  
**City of East Moline Engineering**

TIMOTHY D. KAMMLER  
 062-054176  
 LICENSED  
 PROFESSIONAL  
 ENGINEER  
 OF  
 STATE OF ILLINOIS

I HEREBY CERTIFY THAT THESE PLANS WERE PREPARED BY ME OR UNDER MY DIRECT PERSONAL SUPERVISION, AND THAT I AM A DULY REGISTERED PROFESSIONAL ENGINEER UNDER THE LAWS OF THE STATE OF ILLINOIS.

*[Signature]*  
 TIMOTHY D. KAMMLER, PE  
 IL. REG. #062-054176

11-06-09  
 DATE  
 EXP. 11/30/09



HMA CHART

Mixture Use(s):	Surface
PG:	SBS PG 70-22
Design Air Voids	4.0 @ N70
Mixture Composition (Gradation Mixture)	IL 9.5 or 12.5
Friction Aggregate	D
20 Year ESAL	4.2
Mix Unit Weight	112 lbs/sy/in

TYPICAL SECTION

STA. 14+04.03 TO STA. 40+30.27  
 STA. 41+45.91 TO STA. 46+00.00  
 OMISSION @ R.R. TRACKS STA. 40+30.27 TO STA. 41+45.91

PCC BUTT JOINT

STA. 14+04.03 TO STA. 14+24.03  
 STA. 40+10.27 TO STA. 40+30.27  
 STA. 41+45.91 TO STA. 41+65.91  
 STA. 45+80.00 TO STA. 46+00.00

SUMMARY OF QUANTITIES

CONSTRUCTION TYPE CODE: I000

CODE NO.	ITEM	UNIT	TOTAL
1	25000110 SEEDING, CLASS 1A	ACRE	0.25
2	25100105 MULCH, METHOD 1	ACRE	0.25
3	40600985 PORTLAND CEMENT CONCRETE SURFACE REMOVAL - BUTT JOINT	SQ YD	423.2
4	40603340 HOT-MIX ASPHALT SURFACE COURSE MIX 'D', N70	TON	2235
5	44200929 CLASS B PATCHES, TYPE I, 8 INCH	SQ YD	8
6	44200934 CLASS B PATCHES, TYPE II, 8 INCH	SQ YD	157.0
7	44200942 CLASS B PATCHES, TYPE III, 8 INCH	SQ YD	127.0
8	44200944 CLASS B PATCHES, TYPE IV, 8 INCH	SQ YD	2003
9	44213200 SAW CUTS	FOOT	4066
10	60255500 MANHOLES TO BE ADJUSTED	EACH	8
11	60260100 INLETS TO BE ADJUSTED	EACH	11
12	60266600 VALVE BOXES TO BE ADJUSTED	EACH	2
13	67100100 MOBILIZATION	L SUM	1
14	*70101700 TRAFFIC CONTROL AND PROTECTION	L SUM	1
15	70300100 SHORT-TERM PAVEMENT MARKING	FOOT	2145
16	Δ78000100 THERMOPLASTIC PAVEMENT MARKING - LETTERS AND SYMBOLS	SQ FT	17.6
17	Δ78000200 THERMOPLASTIC PAVEMENT MARKING - LINE 4"	FOOT	2145
18	Δ78000500 THERMOPLASTIC PAVEMENT MARKING - LINE 8"	FOOT	350
19	*X4400100 PORTLAND CEMENT CONCRETE SURFACE REMOVAL (VARIABLE DEPTH)	SQ YD	3373
20	Z0017202 DOWEL BARS 1 1/2"	EACH	1258
21	Z0048665 RAILROAD PROTECTION LIABILITY INSURANCE	L SUM	1
22	Z0075310 TIE BARS 3/4"	EACH	848

\* INDICATES SPECIAL PROVISION  
 Δ SPECIALTY ITEMS

REVISIONS

*EM*  
 City of East Moline Engineering

12th Avenue Resurfacing Project  
 7th Street to 13th Street  
 Typical Section

Sheet No.

SEEDING, CLASS 1A		
STATION	ACRE	REMARKS
ENTIRE PROJECT	.25	PATCH LOCATIONS AT EOP
PROJECT TOTAL	0.25	
25000110		

MULCH, METHOD 1		
STATION	ACRE	REMARKS
ENTIRE PROJECT	.25	PATCH LOCATIONS AT EOP
PROJECT TOTAL	0.25	
25100105		

PORTLAND CEMENT CONCRETE SURFACE REMOVAL - BUTT JOINT		
STATION	SQ.YD.	REMARKS
14+04.03 TO 14+24.03	80.0	ENTIRE WIDTH OF PAVEMENT
40+10.27 TO 40+30.27	114.4	ENTIRE WIDTH OF PAVEMENT
41+45.91 TO 41+65.91	114.4	ENTIRE WIDTH OF PAVEMENT
45+80.00 TO 46+00.00	114.4	ENTIRE WIDTH OF PAVEMENT
PROJECT TOTAL	423.2	
40600985		

HOT-MIX ASPHALT SURFACE COURSE, MIX "D", N70		
STATION	TON	REMARKS
14+04.03 TO 37+84.16	1565	36" B-B
37+84.16 TO 38+36.18	40	TAPERS
38+36.18 TO 40+30.27	190	51.5" B-B
41+45.91 TO 46+00.00	440	51.5" B-B
PROJECT TOTAL	2235	
40603340		

CLASS B PATCHES, TYPE I 8 INCH		
STATION	SQ.YD.	REMARKS
19+60.78 R TO 19+69.64 R	3.9	PARTIAL N.B. LANE
19+60.78 L TO 19+69.64 L	3.9	PARTIAL S.B. LANE
PROJECT TOTAL	7.8	
44200929		

CLASS B PATCHES, TYPE II 8 INCH		
STATION	SQ.YD.	REMARKS
19+35.57 R TO 19+42.27 R	7.8	PARTIAL N.B. LANE
19+57.42 R TO 19+66.83 R	7.8	PARTIAL N.B. LANE
21+85.65 R TO 21+96.04 R	12.7	PARTIAL N.B. LANE
24+85.67 R TO 24+91.64 R	11.9	N.B. LANE
34+78.35 R TO 34+85.77 R	14.8	N.B. LANE
41+67.53 R TO 41+72.53 R	14.3	E.B. LANE
16+78.00 L TO 16+86.30 L	8.3	PARTIAL S.B. LANE
18+81.27 L TO 18+88.28 L	14.0	S.B. LANE
20+26.88 L TO 20+39.33 L	11.6	PARTIAL S.B. LANE
24+85.67 L TO 24+91.64 L	11.9	S.B. LANE
34+78.35 L TO 34+85.77 L	14.8	S.B. LANE
41+67.53 L TO 41+72.53 L	14.3	W.B. LANE
46+27.91 L TO 46+45.60 L	12.8	PARTIAL W.B. LANE
PROJECT TOTAL	157.0	
44200934		

CLASS B PATCHES, TYPE III 8 INCH		
STATION	SQ.YD.	REMARKS
24+57.56 R TO 24+74.85 R	20.2	PARTIAL N.B. LANE
31+32.19 R TO 31+44.13 R	24.1	N.B. LANE
44+81.29 R TO 44+89.86 R	24.5	E.B. LANE
20+82.37 L TO 21+01.55 L	21.3	PARTIAL S.B. LANE
21+85.65 L TO 21+96.04 L	20.8	S.B. LANE
28+54.32 L TO 28+62.42 L	16.1	S.B. LANE
PROJECT TOTAL	127.0	
44200942		

CLASS B PATCHES, TYPE IV 8 INCH		
STATION	SQ.YD.	REMARKS
14+04.03 R TO 15+73.77 R	176.4	PARTIAL N.B. LANE
16+06.35 R TO 17+10.39 R	77.1	PARTIAL N.B. LANE
17+31.75 R TO 17+60.00 R	56.5	N.B. LANE
18+81.27 R TO 19+03.65 R	27.4	PARTIAL N.B. LANE
20+52.40 R TO 21+19.33 R	104.1	PARTIAL N.B. LANE
23+89.37 R TO 24+19.22 R	80.3	PARTIAL N.B. LANE
25+13.90 R TO 25+69.23 R	86.1	PARTIAL N.B. LANE
26+16.49 R TO 26+86.11 R	109.2	PARTIAL N.B. LANE
27+81.44 R TO 30+66.11 R	223.1	PARTIAL N.B. LANE
33+06.97 R TO 33+38.76 R	28.3	PARTIAL N.B. LANE
34+30.10 R TO 34+60.42 R	30.3	PARTIAL N.B. LANE
38+82.63 R TO 39+16.88 R	44.6	PARTIAL N.B. LANE
39+43.27 R TO 39+63.66 R	25.0	PARTIAL N.B. LANE
42+33.82 R TO 42+68.23 R	79.8	PARTIAL E.B. LANE
42+82.31 R TO 43+08.21 R	74.0	E.B. LANE
44+52.53 R TO 44+82.32 R	28.0	E.B. LANE
46+28.35 R TO 46+43.60 R	43.6	E.B. LANE
23+22.94 L TO 23+37.76 L	29.7	S.B. LANE
26+23.52 L TO 26+52.10 L	34.9	PARTIAL S.B. LANE
29+45.86 L TO 29+64.05 L	30.1	PARTIAL S.B. LANE
33+04.91 L TO 33+59.44 L	48.5	PARTIAL S.B. LANE
35+04.59 L TO 35+75.02 L	50.9	PARTIAL S.B. LANE
37+04.24 L TO 37+83.99 L	88.2	PARTIAL S.B. LANE
38+82.63 L TO 39+16.88 L	55.4	PARTIAL S.B. LANE
42+33.82 L TO 43+11.11 L	162.6	PARTIAL W.B. LANE
43+32.52 L TO 44+01.78 L	121.2	PARTIAL W.B. LANE
44+19.28 L TO 44+35.26 L	28.0	PARTIAL W.B. LANE
44+81.29 L TO 45+38.96 L	60.1	PARTIAL W.B. LANE
PROJECT TOTAL	2003.4	
44200944		

MANHOLES TO BE ADJUSTED		
STATION	EACH	REMARKS
17+89.90; 6.61' RT.	1	WATER
20+92.71; 5.49' RT.	1	SANITARY
21+88.99; 8.36' RT.	1	SANITARY
23+30.12; 9.54' RT.	1	SANITARY
25+80.80; 9.23' RT.	1	SANITARY
25+96.35; 3.49' RT.	1	STORM
26+22.50; 14.59' RT.	1	SANITARY
26+54.31; 15.17' RT.	1	WATER
PROJECT TOTAL	8	
60255500		

INLETS TO BE ADJUSTED		
STATION	EACH	REMARKS
25+80.16; 21.56' RT.	1	STREET INLET
26+32.28; 18.00' LT.	1	STREET INLET
26+44.73; 19.27' RT.	1	STREET INLET
33+16.64; 18.00' LT.	1	STREET INLET
33+17.37; 18.00' RT.	1	STREET INLET
33+20.24; 18.00' LT.	1	STREET INLET
33+20.97; 18.00' RT.	1	STREET INLET
39+56.74; 25.08' LT.	1	STREET INLET
39+84.56; 25.75' RT.	1	STREET INLET
40+07.65; 26.25' LT.	1	STREET INLET
43+00.27; 25.75' RT.	1	STREET INLET
43+01.66; 25.75' LT.	1	STREET INLET
PROJECT TOTAL	11	
60260100		

VALVE BOXES TO BE ADJUSTED		
STATION	EACH	REMARKS
25+75.75; 12.58' RT.	1	WATER
28+46.03; 15.57' RT.	1	WATER
PROJECT TOTAL	2	
60266600		

MOBILIZATION		
STATION	LUMP SUM	REMARKS
ENTIRE PROJECT	1	
PROJECT TOTAL	1	
67100100		

TRAFFIC CONTROL AND PROTECTION		
STATION	LUMP SUM	REMARKS
ENTIRE PROJECT	1	
PROJECT TOTAL	1	
70101700		

THERMOPLASTIC PAVEMENT MARKING - LETTERS AND SYMBOLS		
STATION	SQ.FT.	REMARKS
38+40	8.8	LEFT TURN ARROW (WHITE)
39+20	8.8	LEFT TURN ARROW (WHITE)
PROJECT TOTAL	17.6	
78000100		

THERMOPLASTIC PAVEMENT MARKING - LINE 4"		
STATION	FOOT	REMARKS
14+04.03 TO 37+84.16	595	SKIP-DASH (YELLOW)
37+84.16 TO 39+07.62	250	DOUBLE SOLID (YELLOW)
39+38.14 TO 46+00.00	1300	MEDIAN (YELLOW)
PROJECT TOTAL	2145	
78000200		

THERMOPLASTIC PAVEMENT MARKING - LINE 8"		
STATION	FOOT	REMARKS
38+37.22 TO 39+38.14	100	SOLID (WHITE)
39+38.14 TO 46+00.00	250	MEDIAN HATCH (YELLOW)
PROJECT TOTAL	350	
78000500		

PORTLAND CEMENT CONCRETE SURFACE REMOVAL (VARIABLE DEPTH)		
STATION	SQ.YD.	REMARKS
13+92.65 R TO 40+10.27 R	1448	AT CURB LINE
13+73.80 L TO 40+10.27 L	1465	AT CURB LINE
41+65.91 R TO 45+80.00 R	230	AT CURB LINE
41+65.91 L TO 45+80.00 L	230	AT CURB LINE
PROJECT TOTAL	3373	
X4400100		

Project No.  
01-015-2009

REVISIONS



12th Avenue Resurfacing Project  
7th Street to 13th Street  
Schedule of Quantities

REVISIONS



DOWEL BARS 1 1/2"

STATION	EACH	REMARKS
14+04.03 R TO 15+73.77 R	15	PARTIAL N.B. LANE
16+06.35 R TO 17+10.39 R	25	PARTIAL N.B. LANE
17+31.75 R TO 17+60.00 R	30	N.B. LANE
18+81.27 R TO 19+03.65 R	20	PARTIAL N.B. LANE
19+35.57 R TO 19+42.27 R	20	PARTIAL N.B. LANE
19+57.42 R TO 19+66.83 R	10	PARTIAL N.B. LANE
19+60.78 R TO 19+69.64 R	6	PARTIAL N.B. LANE
20+52.40 R TO 21+19.33 R	30	PARTIAL N.B. LANE
21+85.65 R TO 21+96.04 R	20	PARTIAL N.B. LANE
23+69.37 R TO 24+19.22 R	30	PARTIAL N.B. LANE
24+57.56 R TO 24+74.85 R	20	PARTIAL N.B. LANE
24+85.67 R TO 24+91.64 R	30	N.B. LANE
25+13.90 R TO 25+69.23 R	30	PARTIAL N.B. LANE
26+16.49 R TO 26+86.11 R	30	PARTIAL N.B. LANE
27+81.44 R TO 30+66.11 R	40	PARTIAL N.B. LANE
31+32.19 R TO 31+44.13 R	30	N.B. LANE
33+06.97 R TO 33+38.76 R	10	PARTIAL N.B. LANE
34+30.10 R TO 34+60.42 R	10	PARTIAL N.B. LANE
34+78.35 R TO 34+85.77 R	30	N.B. LANE
38+82.63 R TO 39+16.88 R	20	PARTIAL N.B. LANE
39+43.27 R TO 39+63.66 R	30	PARTIAL N.B. LANE
41+67.53 R TO 41+72.53 R	40	E.B. LANE
42+33.82 R TO 42+68.23 R	40	PARTIAL E.B. LANE
42+82.31 R TO 43+08.21 R	40	E.B. LANE
44+52.53 R TO 44+62.32 R	40	E.B. LANE
44+81.29 R TO 44+89.86 R	40	E.B. LANE
46+28.35 R TO 46+43.60 R	40	E.B. LANE
16+78.00 L TO 16+86.30 L	10	PARTIAL S.B. LANE
18+81.27 L TO 18+88.28 L	30	S.B. LANE
19+60.78 L TO 19+69.64 L	6	PARTIAL S.B. LANE
20+26.88 L TO 20+39.33 L	10	PARTIAL S.B. LANE
20+82.37 L TO 21+01.55 L	20	PARTIAL S.B. LANE
21+85.65 L TO 21+96.04 L	30	S.B. LANE
23+22.94 L TO 23+37.76 L	30	S.B. LANE
24+85.67 L TO 24+91.64 L	30	S.B. LANE
26+23.52 L TO 26+52.10 L	30	PARTIAL S.B. LANE
28+54.32 L TO 28+62.42 L	30	S.B. LANE
29+45.86 L TO 29+64.05 L	26	PARTIAL S.B. LANE
33+04.91 L TO 33+59.44 L	10	PARTIAL S.B. LANE
34+78.35 L TO 34+85.77 L	30	S.B. LANE
35+04.59 L TO 35+75.02 L	10	PARTIAL S.B. LANE
37+04.24 L TO 37+83.99 L	15	PARTIAL S.B. LANE
38+82.63 L TO 39+16.88 L	20	PARTIAL S.B. LANE
41+67.53 L TO 41+72.53 L	40	W.B. LANE
42+33.82 L TO 43+11.11 L	40	PARTIAL W.B. LANE
43+32.52 L TO 44+01.78 L	30	PARTIAL W.B. LANE
44+19.28 L TO 44+35.26 L	30	PARTIAL W.B. LANE
44+81.29 L TO 45+38.96 L	40	PARTIAL W.B. LANE
46+27.51 L TO 46+45.60 L	15	PARTIAL W.B. LANE
PROJECT TOTAL	1258	
Z0017202		

SAW CUTS

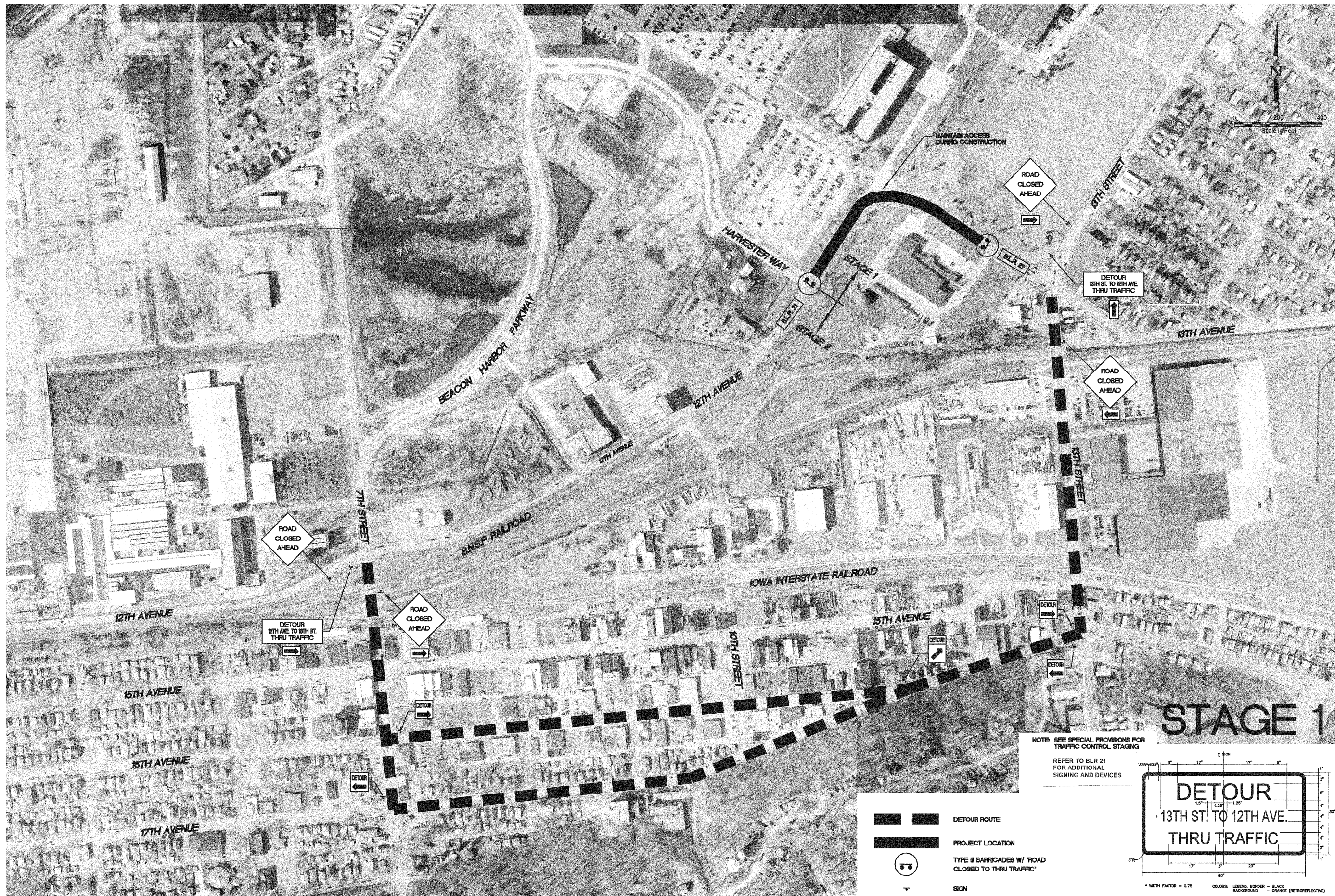
STATION	FOOT	REMARKS
14+04.03 R TO 15+73.77 R	371	PARTIAL N.B. LANE
16+06.35 R TO 17+10.39 R	221	PARTIAL N.B. LANE
17+31.75 R TO 17+60.00 R	64	N.B. LANE
18+81.27 R TO 19+03.65 R	70	PARTIAL N.B. LANE
19+35.57 R TO 19+42.27 R	32	PARTIAL N.B. LANE
19+57.42 R TO 19+66.83 R	23	PARTIAL N.B. LANE
19+60.78 R TO 19+69.64 R	26	PARTIAL N.B. LANE
20+52.40 R TO 21+19.33 R	103	PARTIAL N.B. LANE
21+85.65 R TO 21+96.04 R	32	PARTIAL N.B. LANE
23+69.37 R TO 24+19.22 R	113	PARTIAL N.B. LANE
24+57.56 R TO 24+74.85 R	54	PARTIAL N.B. LANE
24+85.67 R TO 24+91.64 R	42	N.B. LANE
25+13.90 R TO 25+69.23 R	91	PARTIAL N.B. LANE
26+16.49 R TO 26+86.11 R	132	PARTIAL N.B. LANE
27+81.44 R TO 30+66.11 R	628	PARTIAL N.B. LANE
31+32.19 R TO 31+44.13 R	48	N.B. LANE
33+06.97 R TO 33+38.76 R	46	PARTIAL N.B. LANE
34+30.10 R TO 34+60.42 R	46	PARTIAL N.B. LANE
34+78.35 R TO 34+85.77 R	43	N.B. LANE
38+82.63 R TO 39+16.88 R	92	PARTIAL N.B. LANE
39+43.27 R TO 39+63.66 R	60	PARTIAL N.B. LANE
41+67.53 R TO 41+72.53 R	55	E.B. LANE
42+33.82 R TO 42+68.23 R	95	PARTIAL E.B. LANE
42+82.31 R TO 43+08.21 R	76	E.B. LANE
44+52.53 R TO 44+62.32 R	60	E.B. LANE
44+81.29 R TO 44+89.86 R	58	E.B. LANE
46+28.35 R TO 46+43.60 R	65	E.B. LANE
16+78.00 L TO 16+86.30 L	26	PARTIAL S.B. LANE
18+81.27 L TO 18+88.28 L	36	S.B. LANE
19+60.78 L TO 19+69.64 L	17	PARTIAL S.B. LANE
20+26.88 L TO 20+39.33 L	28	PARTIAL S.B. LANE
20+82.37 L TO 21+01.55 L	39	PARTIAL S.B. LANE
21+85.65 L TO 21+96.04 L	36	S.B. LANE
23+22.94 L TO 23+37.76 L	51	S.B. LANE
24+85.67 L TO 24+91.64 L	36	S.B. LANE
26+23.52 L TO 26+52.10 L	36	PARTIAL S.B. LANE
28+54.32 L TO 28+62.42 L	36	S.B. LANE
29+45.86 L TO 29+64.05 L	55	PARTIAL S.B. LANE
33+04.91 L TO 33+59.44 L	70	PARTIAL S.B. LANE
34+78.35 L TO 34+85.77 L	43	S.B. LANE
35+04.59 L TO 35+75.02 L	152	PARTIAL S.B. LANE
37+04.24 L TO 37+83.99 L	100	PARTIAL S.B. LANE
38+82.63 L TO 39+16.88 L	62	PARTIAL S.B. LANE
41+67.53 L TO 41+72.53 L	50	W.B. LANE
42+33.82 L TO 43+11.11 L	104	PARTIAL W.B. LANE
43+32.52 L TO 44+01.78 L	99	PARTIAL W.B. LANE
44+19.28 L TO 44+35.26 L	46	PARTIAL W.B. LANE
44+81.29 L TO 45+38.96 L	152	PARTIAL W.B. LANE
46+27.51 L TO 46+45.60 L	44	PARTIAL W.B. LANE
PROJECT TOTAL	4066	
44213200		



REVISIONS

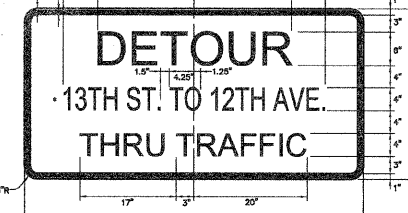


12th Avenue Resurfacing Project  
7th Street to 13th Street  
Traffic Control and Detour Plan



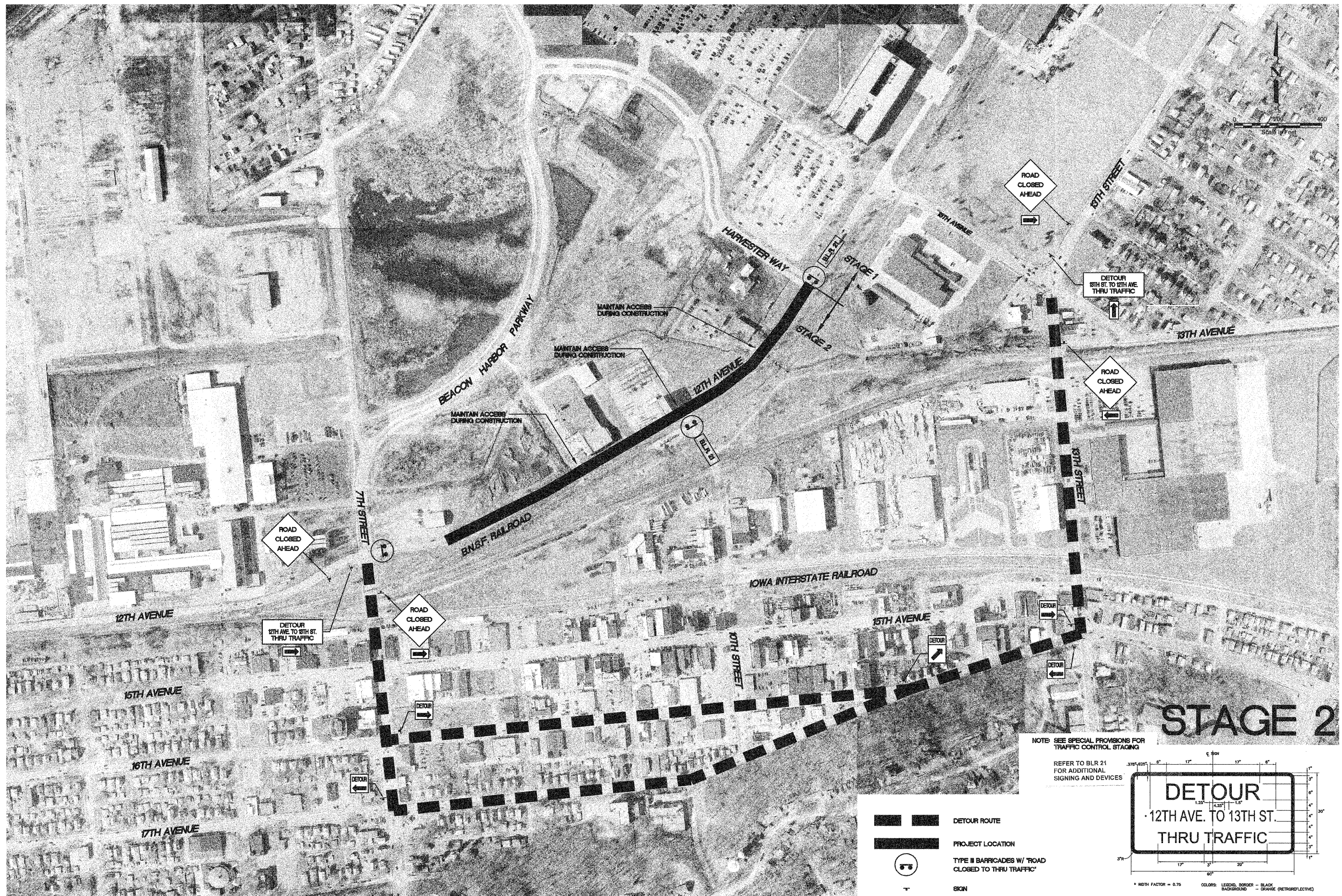
- DETOUR ROUTE
- PROJECT LOCATION
- TYPE II BARRICADES W/ 'ROAD CLOSED TO THRU TRAFFIC'
- SIGN

NOTE: SEE SPECIAL PROVISIONS FOR TRAFFIC CONTROL STAGING  
REFER TO BLR 21 FOR ADDITIONAL SIGNING AND DEVICES







SIGN LAYOUT DETAIL

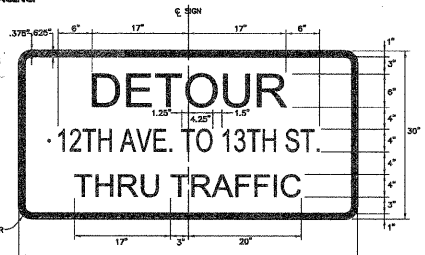




NOTE: SEE SPECIAL PROVISIONS FOR TRAFFIC CONTROL STAGING

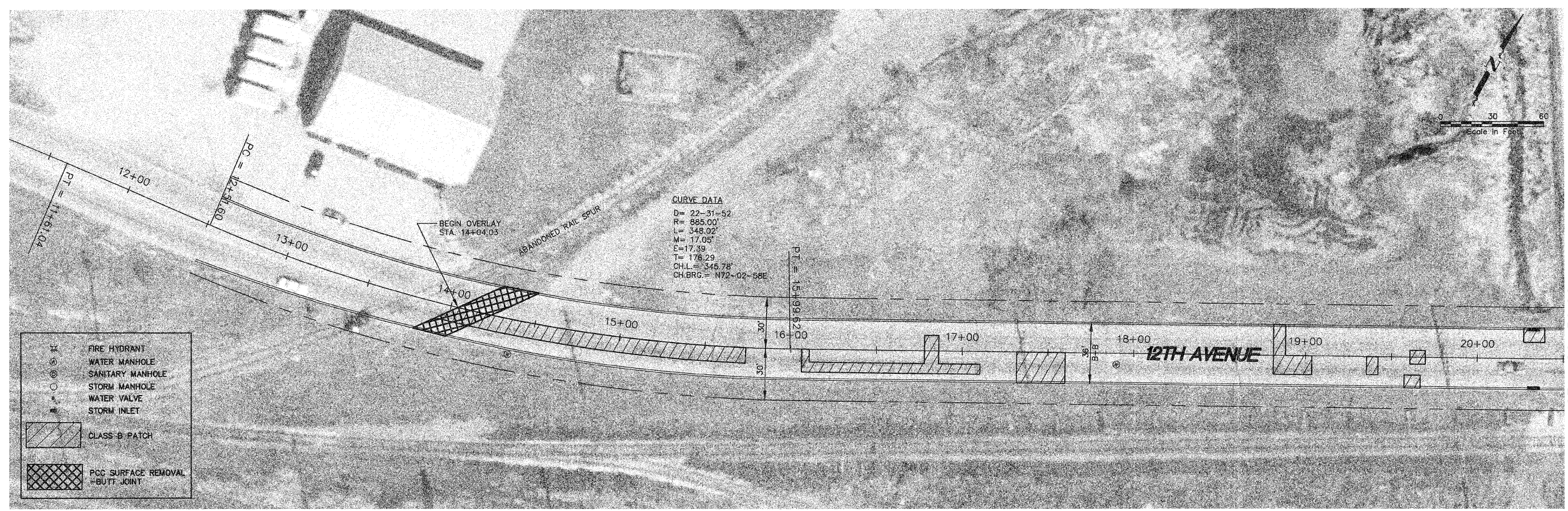
REFER TO BLR 21 FOR ADDITIONAL SIGNING AND DEVICES

-  DETOUR ROUTE
-  PROJECT LOCATION
-  TYPE II BARRICADES W/ "ROAD CLOSED TO THRU TRAFFIC"
-  SIGN



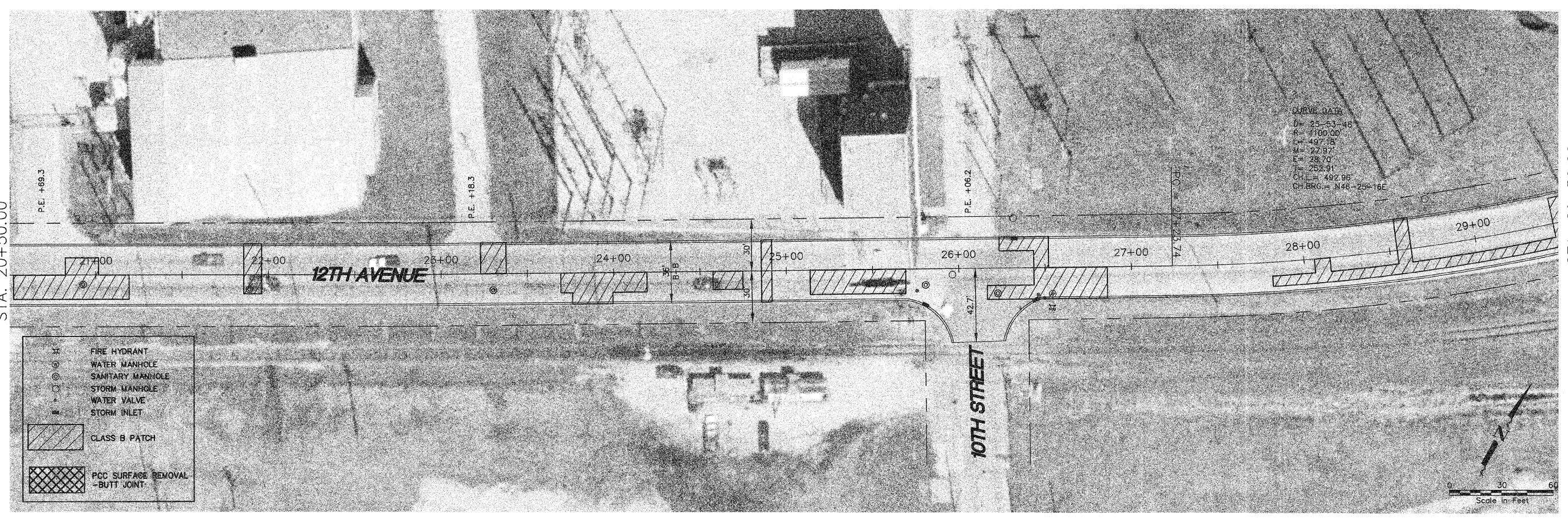
SIGN LAYOUT DETAIL





STA. 20+50.00

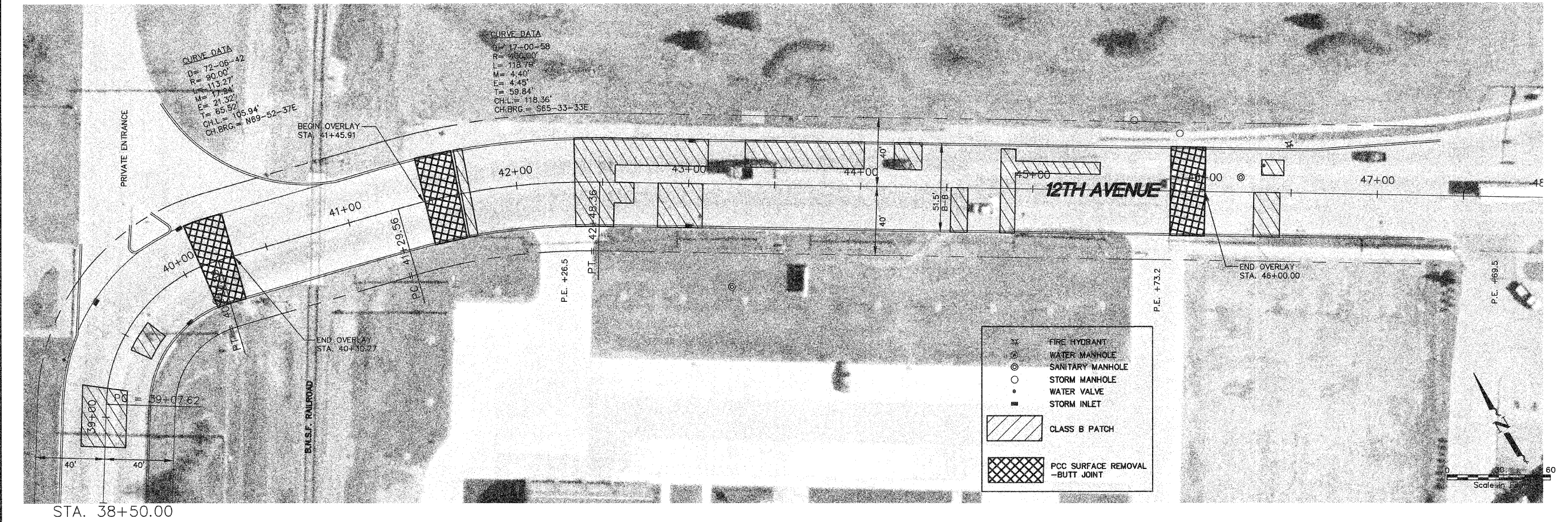
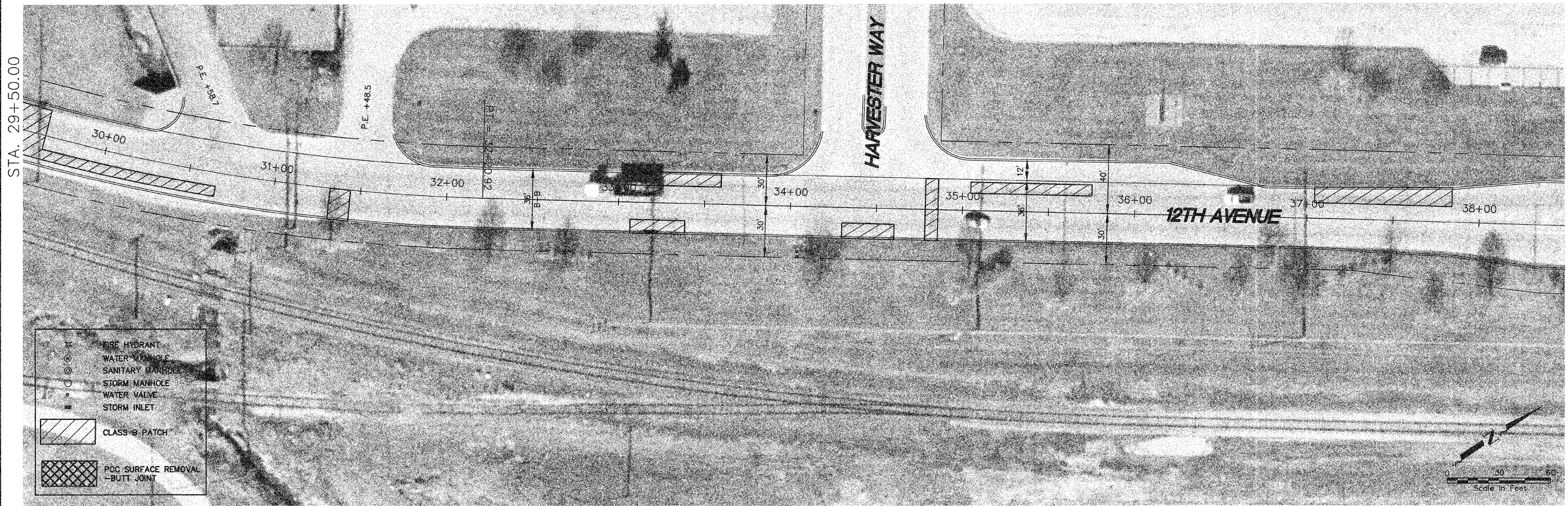
REVISIONS



STA. 20+50.00

STA. 29+50.00





85489

Project No.  
01-015-2009

REVISIONS




12th Avenue Resurfacing Project  
7th Street to 13th Street  
Plan Sheet

Sheet No.  
8



REVISIONS



12th Avenue Resurfacing Project  
7th Street to 13th Street  
Pavement Marking Plan

Sheet No.

9

