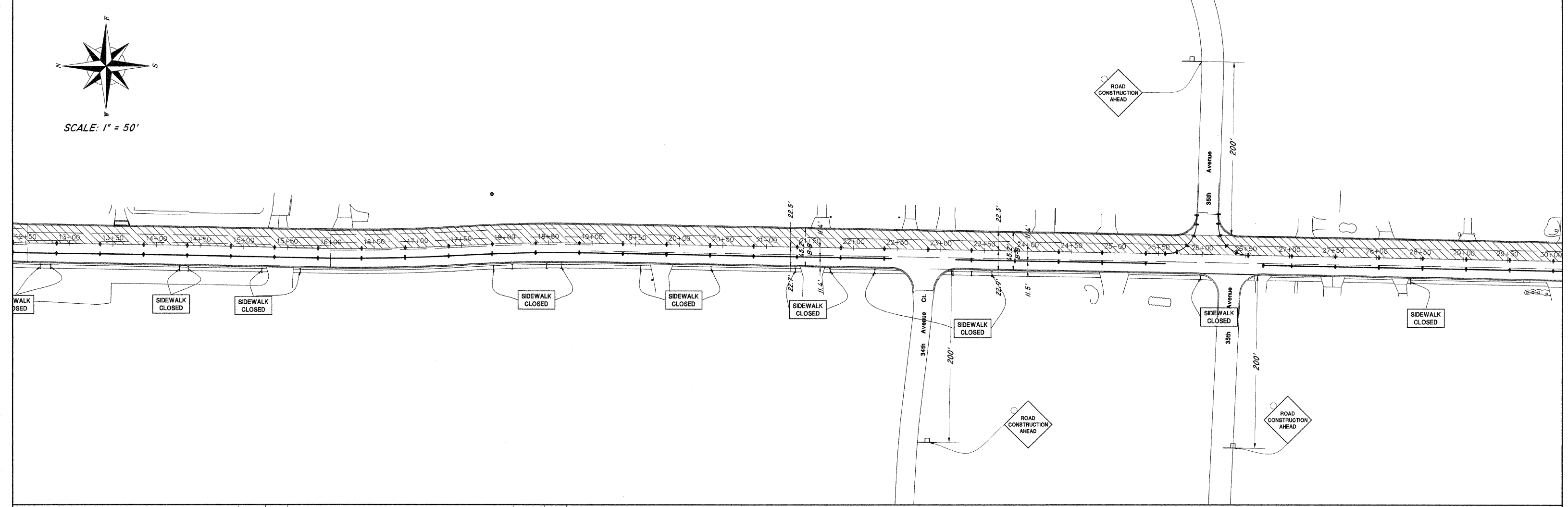
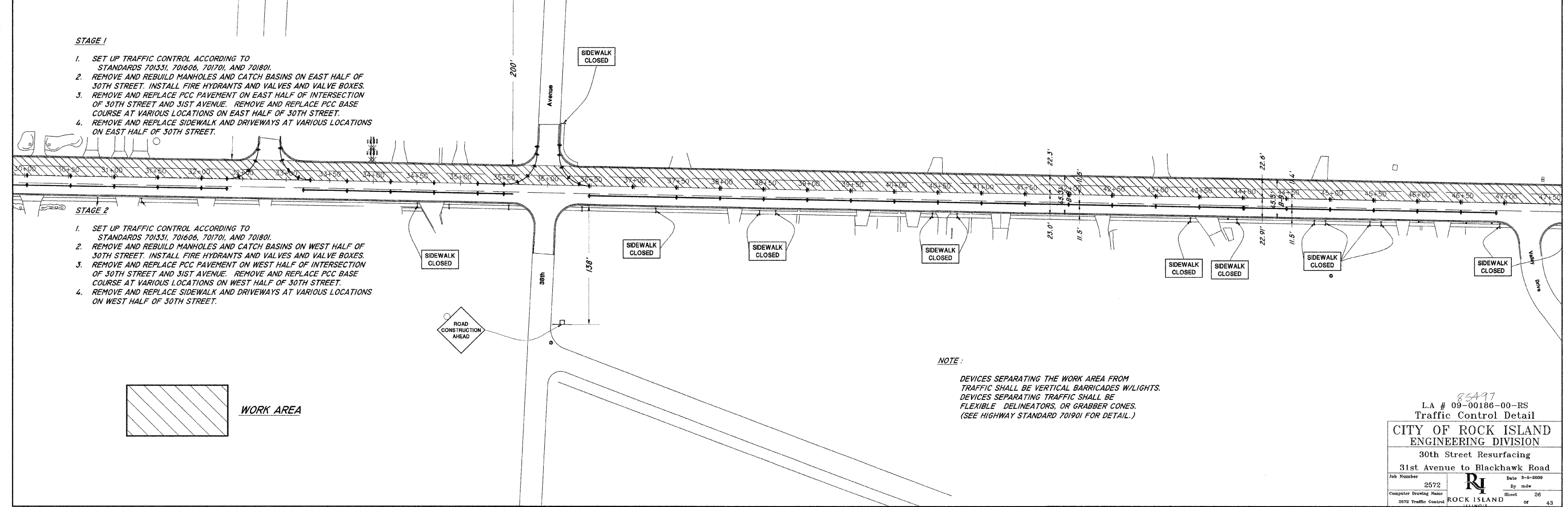


SCALE: 1" = 50'



STAGE 1

1. SET UP TRAFFIC CONTROL ACCORDING TO STANDARDS 701331, 701606, 701701, AND 701801.
2. REMOVE AND REBUILD MANHOLES AND CATCH BASINS ON EAST HALF OF 30TH STREET. INSTALL FIRE HYDRANTS AND VALVES AND VALVE BOXES.
3. REMOVE AND REPLACE PCC PAVEMENT ON EAST HALF OF INTERSECTION OF 30TH STREET AND 31ST AVENUE. REMOVE AND REPLACE PCC BASE COURSE AT VARIOUS LOCATIONS ON EAST HALF OF 30TH STREET.
4. REMOVE AND REPLACE SIDEWALK AND DRIVEWAYS AT VARIOUS LOCATIONS ON EAST HALF OF 30TH STREET.



STAGE 2

1. SET UP TRAFFIC CONTROL ACCORDING TO STANDARDS 701331, 701606, 701701, AND 701801.
2. REMOVE AND REBUILD MANHOLES AND CATCH BASINS ON WEST HALF OF 30TH STREET. INSTALL FIRE HYDRANTS AND VALVES AND VALVE BOXES.
3. REMOVE AND REPLACE PCC PAVEMENT ON WEST HALF OF INTERSECTION OF 30TH STREET AND 31ST AVENUE. REMOVE AND REPLACE PCC BASE COURSE AT VARIOUS LOCATIONS ON WEST HALF OF 30TH STREET.
4. REMOVE AND REPLACE SIDEWALK AND DRIVEWAYS AT VARIOUS LOCATIONS ON WEST HALF OF 30TH STREET.



WORK AREA

NOTE:

DEVICES SEPARATING THE WORK AREA FROM TRAFFIC SHALL BE VERTICAL BARRICADES W/LIGHTS. DEVICES SEPARATING TRAFFIC SHALL BE FLEXIBLE DELINEATORS, OR GRABBER CONES. (SEE HIGHWAY STANDARD 701901 FOR DETAIL.)

L.A # 09-00186-00-RS
Traffic Control Detail

CITY OF ROCK ISLAND
ENGINEERING DIVISION

30th Street Resurfacing
31st Avenue to Blackhawk Road

Job Number 2572	Date 3-9-2009
Computer Drawing Name 3072 Traffic Control	By m.d.w.
Sheet 26	of 26

RI
ROCK ISLAND