

STATE OF ILLINOIS
DEPARTMENT OF TRANSPORTATION
DIVISION OF HIGHWAYS

ROUTE NO.	SECTION	COUNTY	TOTAL SHEETS	SHEET NO.
F.A.U. 5489	*	LEE	35	1
FED. ROAD DIST. NO. 7	ILLINOIS	FED. AID PROJECT-		
* Section 03-00160-00-PV			Contract #85503	

PLANS FOR PROPOSED
ROADWAY IMPROVEMENTS

CITY OF
DIXON

HENNEPIN AVE. RECONSTRUCTION

INDEX OF SHEETS

1	COVER SHEET
2	GENERAL NOTES
3	SUMMARY OF QUANTITIES
4	SCHEDULE OF QUANTITIES
5	OVERALL PLAN
6	TYPICAL SECTIONS
7	INTERSECTION DETAILS
8-10	PLAN & PROFILE - HENNEPIN AVENUE
11-14	CROSS SECTIONS - HENNEPIN AVENUE
15	UTILITY PLAN
16	PAVEMENT & STRIPING PLAN
17	SIDEWALK DETAILS
18	LANDSCAPE PLAN
19	EROSION CONTROL PLAN
20	SANITARY SEWER DETAILS
21-26	TRAFFIC CONTROL PLAN
27-33	LIGHTING PLAN
34-35	DISTRICT 2 STANDARDS

F.A.U. ROUTE 5489 (HENNEPIN AVE.)
SECTION 03-00160-00-PV
CITY OF DIXON
PROJECT ARA-M-5018(015)
JOB NO. C-92-084-04
R. 9 E.

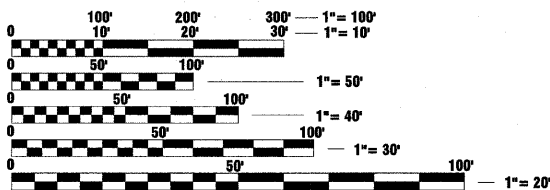
HIGHWAY STANDARDS

STANDARD	TITLE
280001-05	TEMPORARY EROSION CONTROL SYSTEMS
420001-07	PAVEMENT JOINTS
420111-02	PCC PAVEMENT ROUNDOUTS
424001-05	CURB RAMPS FOR SIDEWALKS
602401-02	MANHOLE, TYPE A
602601-02	PRECAST REINFORCED CONCRETE FLAT SLAB TOP
602701-02	CAST IRON STEPS
604001-03	FRAME AND LIDS, TYPE 1
606001-04	CONCRETE CURB TYPE B AND COMBINATION CONCRETE CURB AND GUTTER
701006-03	OFF-ROAD OPERATIONS, 2L, 2W, 15' (4.5 m) TO 24' (600 mm) FROM PAVEMENT EDGE
701301-03	LANE CLOSURE, 2L, 2W, SHORT TIME OPERATIONS
701501-05	URBAN LANE CLOSURE, 2L, 2W, UNDIVIDED
701801-04	LANE CLOSURE, MULTILANE 1W OR 2W CROSSWALK OR SIDEWALK CLOSURE
701901-01	TRAFFIC CONTROL DEVICES
720001-01	SIGN PANEL MOUNTING DETAILS
720006-02	SIGN PANEL ERECTION DETAILS
720011-01	METAL POSTS FOR SIGNS, MARKERS & DELINEATORS
728001-01	TELESCOPING STEEL SIGN SUPPORT
729001-01	APPLICATIONS OF TYPES A & B METAL POSTS (FOR SIGNS & MARKERS)
780001-02	TYPICAL PAVEMENT MARKINGS
814001-02	CONCRETE HANDHOLES
BLR14-10	PORTLAND CEMENT CONCRETE PAVEMENT (NONREINFORCED)
BLR21-8	TYPICAL APPLICATION OF TRAFFIC CONTROL DEVICES FOR CONSTRUCTION ON RURAL LOCAL HIGHWAYS
BLR22-6	TYPICAL APPLICATION OF TRAFFIC CONTROL DEVICES FOR CONSTRUCTION ON RURAL LOCAL HIGHWAYS (TWO-LANE TWO WAY RURAL TRAFFIC) (ROAD CLOSED TO THRU TRAFFIC)

CITY OF DIXON
APPROVED October 27 20 09
Jim A. Burke
CITY OF DIXON

STATE OF ILLINOIS
DEPARTMENT OF TRANSPORTATION
DIVISION OF HIGHWAYS
PASSED November 10 20 09
Jim P. Flinn
DISTRICT 2 ENGINEER OF LOCAL ROADS & STREETS
RELEASED FOR BID BASED ON LIMITED REVIEW
November 10 20 09
Scott A. Brown
DEPUTY DIRECTOR OF HIGHWAYS, REGION 2 ENGINEER

PRINTED BY THE AUTHORITY
OF THE STATE OF ILLINOIS

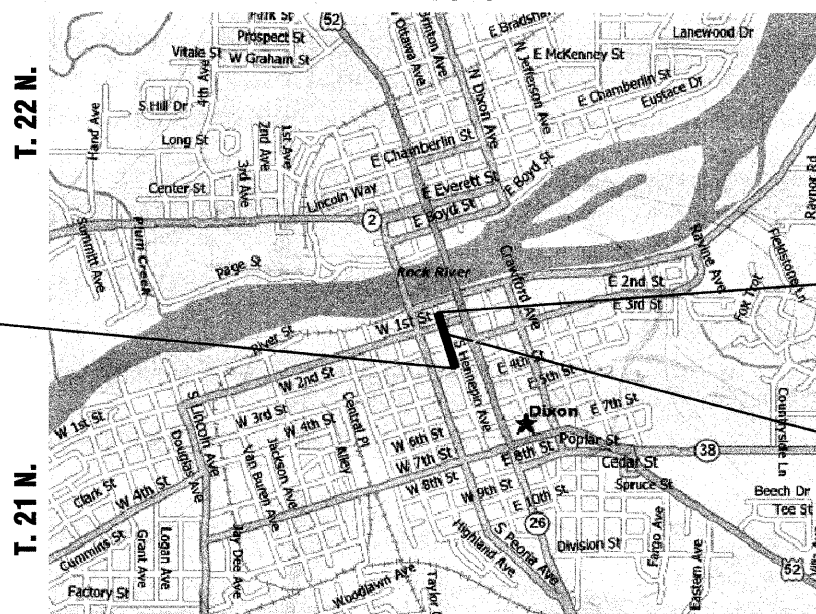


THE LOCATIONS OF UTILITY FACILITIES AS SHOWN ON THESE PLANS ARE AN ESTIMATE AND NOT INTENDED AS FIELD LOCATIONS FOR CONSTRUCTION. THE CONTRACTOR IS RESPONSIBLE FOR CONTACTING ALL UTILITIES PRIOR TO CONSTRUCTION AND CALLING J.U.L.I.E. AT 800-892-0123 FOR CONFIRMATION OF EXISTING UTILITY LOCATIONS.

J.U.L.I.E.
JOINT UTILITY LOCATION INFORMATION FOR EXCAVATION
1-800-892-0123

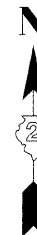
CONTRACT NO. 85503

IMPROVEMENTS BEGIN
STA. - 5+49



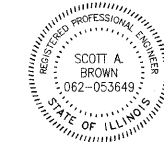
LOCATION MAP - DIXON, ILLINOIS
TOTAL LENGTH OF SECTION = 1095.2 FT (0.21 MI)

TRAFFIC DATA:
FUNCTIONAL CLASSIFICATION: URBAN COLLECTOR
Hennepin Ave. Existing DHV 210 Existing ADT 2100 3% Trucks
30 mph Design Speed



IMPROVEMENTS END
STA. - 16+44.2

PROJECT LOCATION



Scott A. Brown 10/27/09
DATE
SCOTT A. BROWN
DIXON, ILLINOIS
ILLINOIS LICENSED PROFESSIONAL
ENGINEER NO. 062-053649
EXPIRES 11-30-2009

wendler
www.wendlergs.com
GROUND BREAKING SOLUTIONS
engineers - surveyors - scientists
ph: 815.288.2261

Date: 09/25/09
Job: 2090205