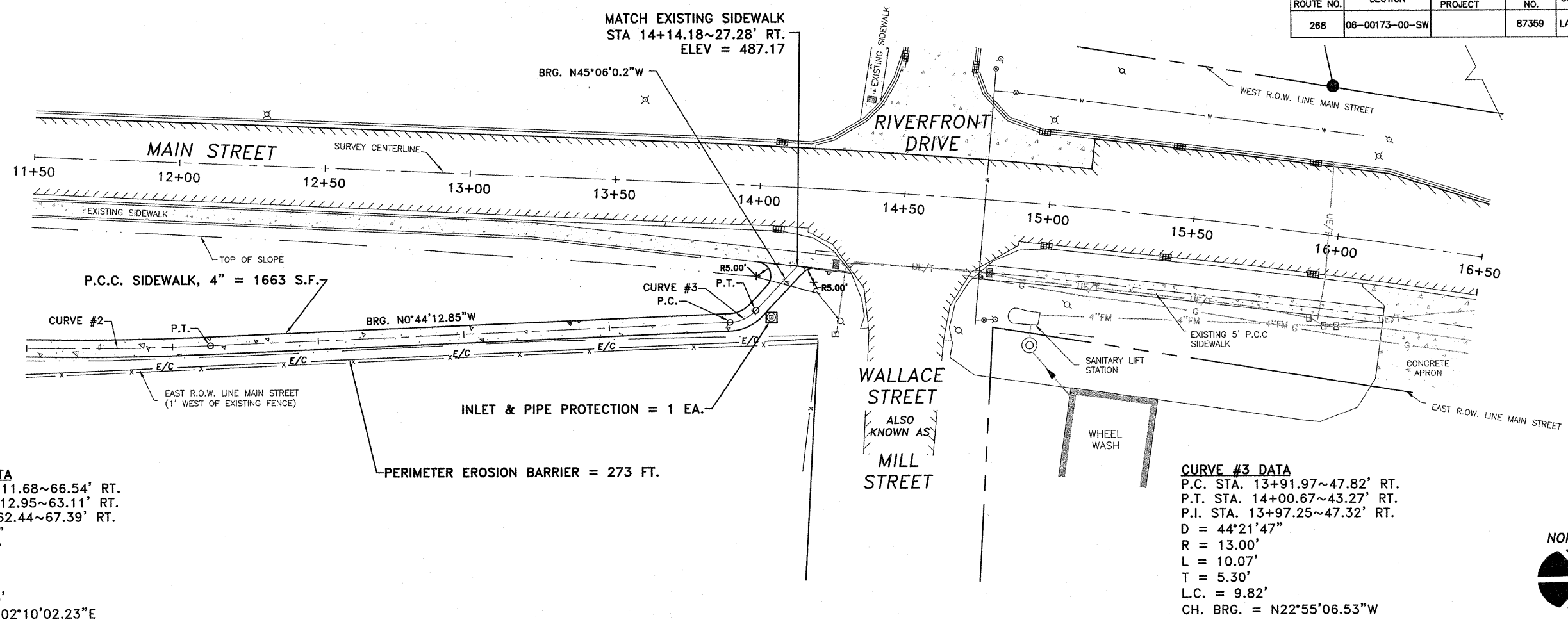


F.A.S. ROUTE NO.	SECTION	ILLINOIS PROJECT	CONTRACT NO.	COUNTY	TOTAL SHEETS	SHEET NUMBER
268	06-00173-00-SW		87359	LASALLE	15	6

**F.A.S. 268 - MAIN STREET**  
**SECTION 06-00173-00-SW**  
**CITY OF MARSEILLES, LASALLE COUNTY**

SEE SHEET NO. 5

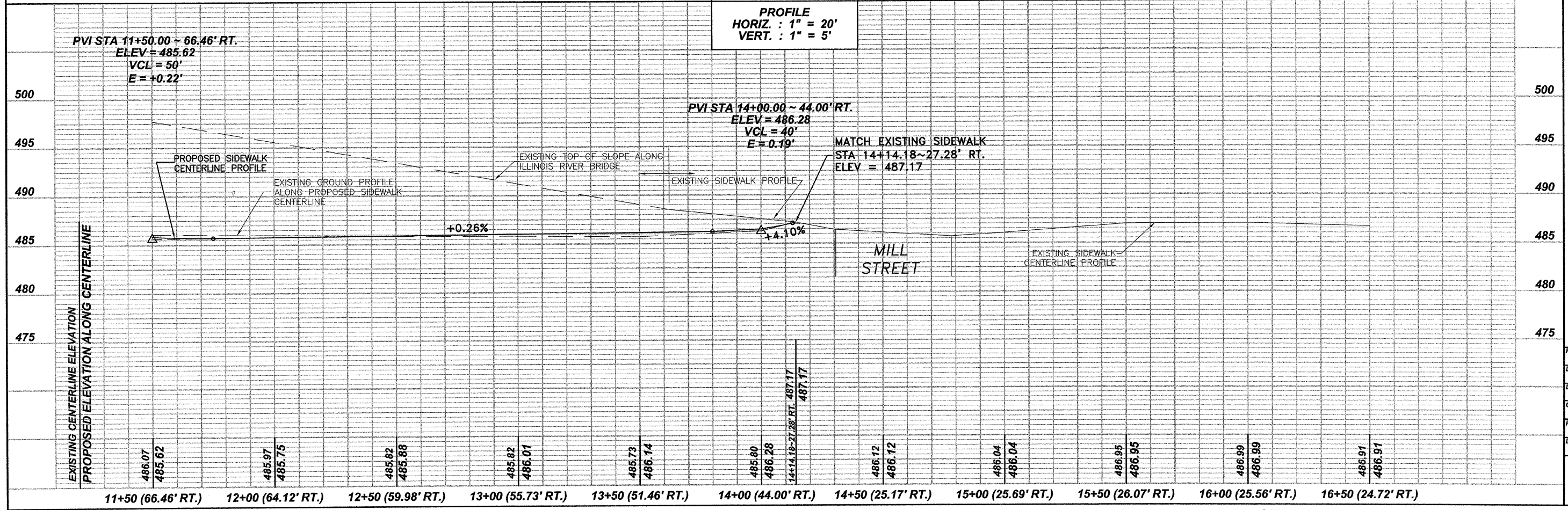
SEE SHEET NO. 7



**CURVE #2 DATA**  
P.C. STA. 11+11.68~66.54' RT.  
P.T. STA. 12+12.95~63.11' RT.  
P.I. STA. 11+62.44~67.39' RT.  
D = 05°48'30"  
R = 1,000.00'  
L = 101.38'  
T = 50.73'  
L.C. = 101.33'  
CH. BRG. = N02°10'02.23"E

**CURVE #3 DATA**  
P.C. STA. 13+91.97~47.82' RT.  
P.T. STA. 14+00.67~43.27' RT.  
P.I. STA. 13+97.25~47.32' RT.  
D = 44°21'47"  
R = 13.00'  
L = 10.07'  
T = 5.30'  
L.C. = 9.82'  
CH. BRG. = N22°55'06.53"W

**SCALES**  
**PLAN**  
HORIZ. : 1" = 20'  
**PROFILE**  
HORIZ. : 1" = 20'  
VERT. : 1" = 5'



1304 GEMINI CIRCLE  
OTTAWA, IL 61350-682  
TEL: 815-244-3923  
FAX: 815-244-3923

**ETSCHED**  
**DUTTLINGER**  
**& ASSOCIATES INC.**  
Professional Engineers & Land Surveyors

PROFESSIONAL DESIGN  
FIRM # 184-000711  
DATE PLOTTED:  
OCTOBER 21, 2009  
DRAWN BY:  
R.M.S.  
CHECKED BY:  
PROJECT NUMBER:  
2057.92  
DRAWING FILE:  
J:\200792\_BASE2.DWG  
**SHEET NO.**

**6 OF 15**

**SIDEWALK IMPROVEMENTS ~ 11+50 TO 16+50**