

F.A.S. ROUTE NO.	SECTION	ILLINOIS PROJECT	CONTRACT NO.	COUNTY	TOTAL SHEETS	SHEET NUMBER
268	06-00173-00-SW	ARA-00D3(58)	87359	LASALLE	15	1

STATE OF ILLINOIS
DEPARTMENT OF TRANSPORTATION
DIVISION OF HIGHWAYS

PLANS FOR PROPOSED FEDERAL ENHANCEMENT PROJECT

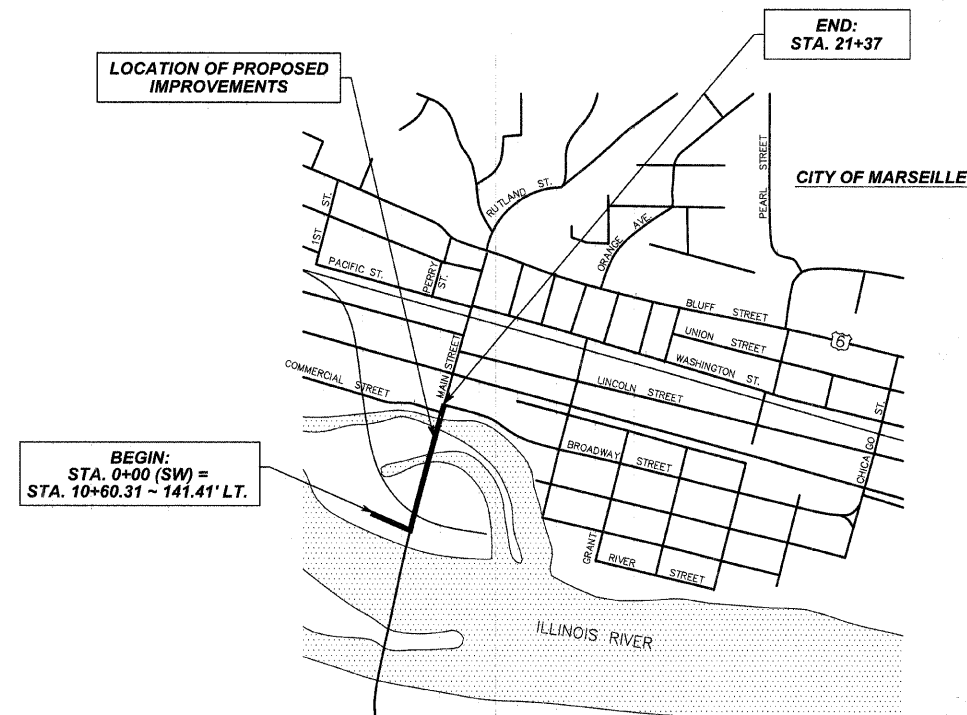
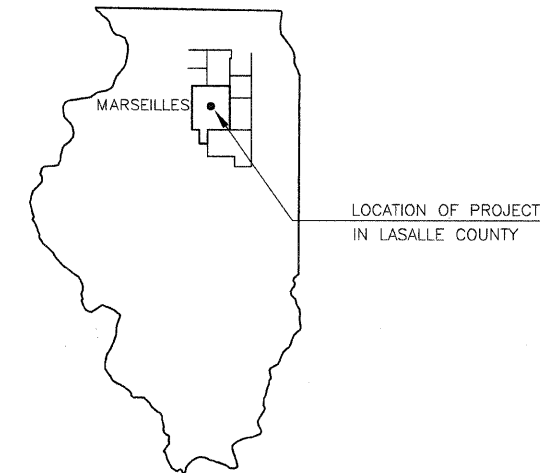
FUNDING TYPE: AMERICAN RECOVERY &
REINVESTMENT ACT
FAS 268 (MAIN STREET)
SECTION 06-00173-00-SW
PROJECT NO. ARA-00D3(58)
JOB NO. C-93-078-07
CONTRACT NO. 87359

INDEX OF SHEETS

NO.	DESCRIPTION
1	COVER SHEET
2	SUMMARY OF QUANTITIES AND GENERAL NOTES
3	TYPICAL SECTIONS
4	SCHEDULE OF QUANTITIES
5-7	PLAN & PROFILES
8	BRIDGE APPROACH DETAILS
9	PEDESTRIAN TRUSS SUPERSTRUCTURE DETAILS
10	PEDESTRIAN TRUSS SUPERSTRUCTURE ABUTMENT DETAILS
11	SOUTH MILL RACE WING WALL MODIFICATION DETAILS
12	NORTH MILL RACE RETAINING WALL MODIFICATION DETAILS
13-15	SIDEWALK CROSS SECTIONS

STANDARDS

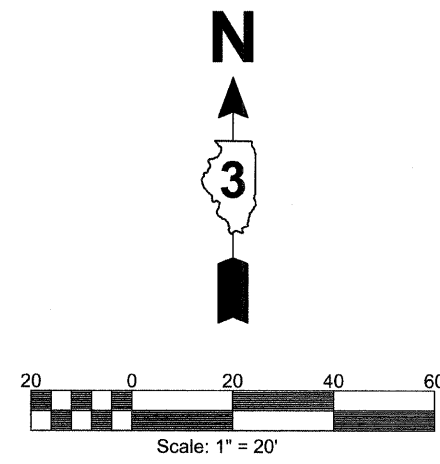
- 280001-05 TEMPORARY EROSION CONTROL SYSTEMS
- 424001-05 CURB RAMPS FOR SIDEWALKS
- 606001-04 CONCRETE CURB TYPE B AND COMBINATION CONCRETE CURB AND GUTTER
- 701501-05 URBAN LANE CLOSURE, 2L, 2W - UNDIVIDED
- 701901-01 TRAFFIC CONTROL DEVICES



BEGIN:
STA. 0+00 (SW) =
STA. 10+60.31 ~ 141.41' LT.

END:
STA. 21+37

GROSS LENGTH OF IMPROVEMENT = 1300' (0.25 MILES)
NET LENGTH OF IMPROVEMENT = 920' (0.17 MILES)



LOCATION MAP : NOT TO SCALE
TYPICAL SECTIONS : NOT TO SCALE
PLAN SHEETS : HORIZ. : 1" = 20'

FULL SIZE PLANS HAVE BEEN PREPARED USING STANDARD ENGINEERING SCALES. REDUCED SIZE PLANS WILL NOT CONFORM TO STANDARD SCALES. IN MAKING MEASUREMENTS ON REDUCED PLANS, THE ABOVE SCALE MAY BE USED.

J.U.L.I.E. SYSTEM - THE TOLL FREE TELEPHONE NUMBER FOR JOINT UTILITY LOCATION INFORMATION FOR EXCAVATION IS 1-800-892-0123

PREPARED BY: *Michael A. Etscheid*
MICHAEL A. ETSCHIED
I.R.P.E. NO. 62-32881
EXPIRES NOVEMBER 30, 2011

DATE: *Dec 3, 2009*

SECTION 06-00173-00-SW
MARSEILLES RIVERFRONT BEAUTIFICATION

**ETSCHIED
DUTTLINGER
& ASSOCIATES INC.**
Professional Engineers & Land Surveyors

1304 Gemini Circle
Ottawa, Illinois 61350
TEL: 815-434-3925
FAX: 815-434-3953

PROFESSIONAL DESIGN FIRM # 184-000711
DRAWN BY: R.M.R. CHECKED BY: PROJECT #: 2057-92 SHEET NO. 1 OF 15
DATE PLOTTED: OCTOBER 21, 2009 FILENAME: J:\205792_COVER

APPROVED *12-4-2009*
James H. Trap
MAYOR, CITY OF MARSEILLES

APPROVED *12-7-2009*
Harold R. Long
DISTRICT 3 ENGINEER OF LOCAL ROADS & STREETS

APPROVED *12-7-2009*
George F. Ryan
DEPUTY DIRECTOR OF HIGHWAYS, REGION 2

STATE OF ILLINOIS
DEPARTMENT OF TRANSPORTATION

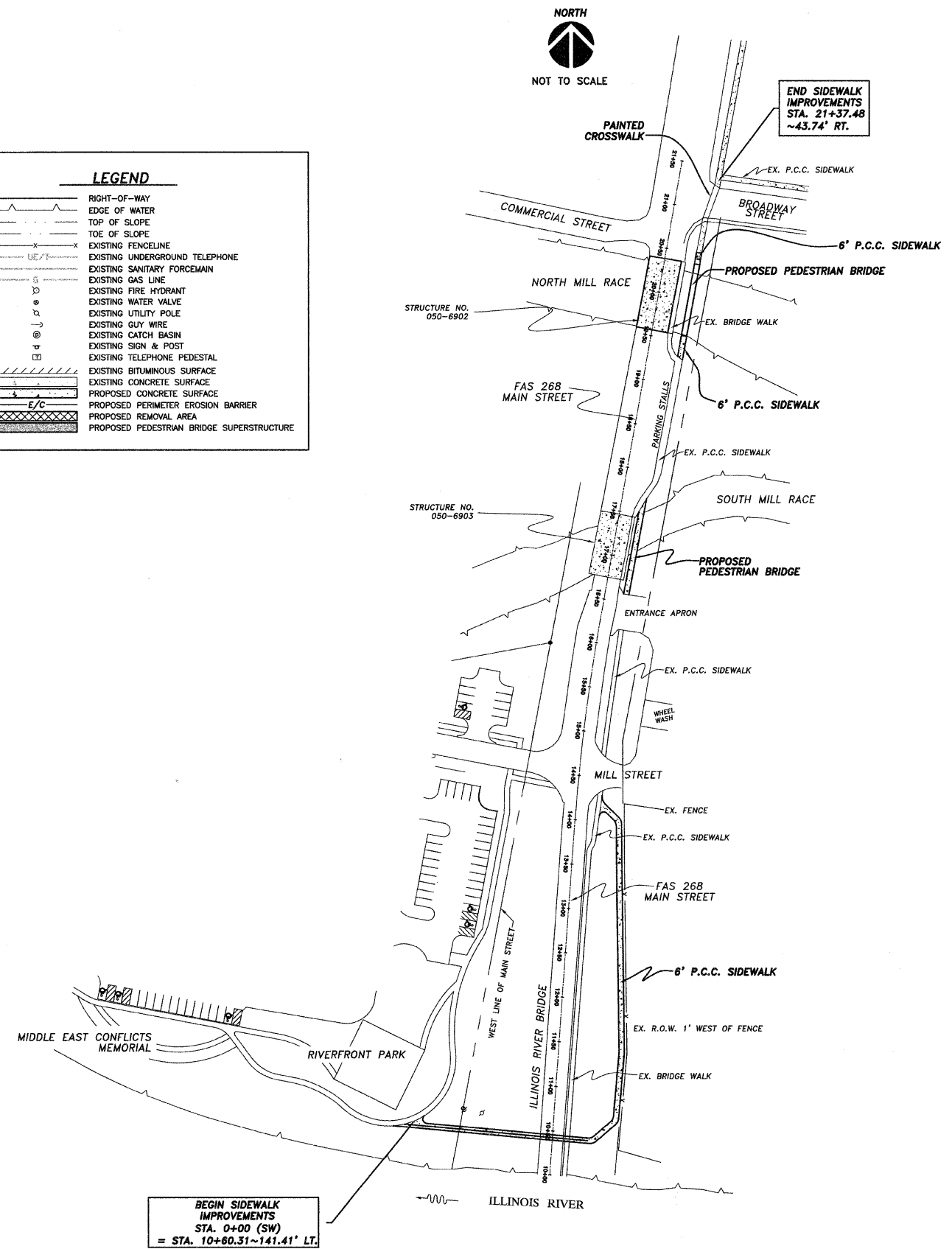
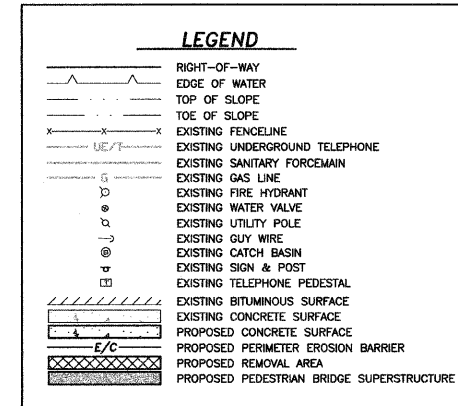
SUMMARY OF QUANTITIES			SIDEWALK	STRUCTURE	TOTAL
NO.	DESCRIPTION	UNIT	QTY	QTY	QTY
20200100	EARTH EXCAVATION	CU YD	292	-	292
21101615	TOPSOIL FURNISH & PLACE, 4"	SQ YD	581	-	581
25000115	SEEDING, CLASS 1B	ACRE	0.2	-	0.2
25000400	NITROGEN FERTILIZER NUTRIENT	POUND	18	-	18
25000500	PHOSPHOROUS FERTILIZER NUTRIENT	POUND	18	-	18
25000600	POTASSIUM FERTILIZER NUTRIENT	POUND	18	-	18
25100115	MULCH, METHOD 2	ACRE	0.2	-	0.2
28000400	PERIMETER EROSION BARRIER	FOOT	609	-	609
28000500	INLET & PIPE PROTECTION	EACH	2	-	2
35100120	AGGREGATE BASE COURSE, TYPE A, 2"	SQ YD	433	-	433
42400100	PORTLAND CEMENT CONCRETE SIDEWALK, 4"	SQ FT	3528	-	3528
42400200	PORTLAND CEMENT CONCRETE SIDEWALK, 5"	SQ FT	366	-	366
42400800	DETECTABLE WARNINGS	SQ FT	26	-	26
44000100	PAVEMENT REMOVAL	SQ YD	74	-	74
44000600	SIDEWALK REMOVAL	SQ FT	116	-	116
* 50104605	CONCRETE RETAINING WALL REMOVAL	CU YD	-	1.6	1.6
50200100	STRUCTURE EXCAVATION	CU YD	-	30	30
50300225	CONCRETE STRUCTURES	CU YD	-	10.4	10.4
50800105	REINFORCEMENT BARS	POUND	-	920	920
50900605	HANDRAIL REMOVAL	FOOT	-	10	10
51201300	FURNISH STEEL PILES HP 8X36	FOOT	-	158	158
51202305	DRIVING PILES	FOOT	-	150	150
* 60600705	CONCRETE CURB, TYPE B (ABUTTING EXISTING PAVEMENT)	FOOT	77	-	77
* 66410300	CHAIN LINK FENCE REMOVAL	FOOT	22	-	22
67100100	MOBILIZATION	L SUM	1	-	1
70102620	TRAFFIC CONTROL & PROTECTION STANDARD 701501	L SUM	1	-	1
Δ 78001150	PAINT PAVEMENT MARKING - LINE 12"	FOOT	121	-	121
* XX001758	WOOD FENCE REMOVAL	FOOT	32	-	32
* X0322508	PEDESTRIAN TRUSS SUPERSTRUCTURE	SQ FT	-	1278	1278

* SEE SPECIAL PROVISIONS
 Δ SPECIALTY ITEMS

GENERAL NOTES:

- 1.) ALL ELEVATIONS REFER TO U.S.G.S. MEAN SEA LEVEL DATUM.
- 2.) ABANDONED UNDERGROUND UTILITIES THAT CONFLICT WITH CONSTRUCTION SHALL BE DISPOSED OF OUTSIDE THE LIMITS OF THE RIGHT OF WAY ACCORDING TO ARTICLE 202.03 OF THE STANDARD SPECIFICATIONS (IDOT) AND AS DIRECTED BY THE ENGINEER. THIS WORK WILL NOT BE PAID FOR SEPARATELY, BUT SHALL BE INCLUDED IN THE COST OF EARTH EXCAVATION.
- 3.) ANY REFERENCE TO A STANDARD IN THESE PLANS SHALL BE INTERPRETED TO MEAN THE EDITION AS INDICATED BY THE SUBNUMBER SHOWN IN THE LIST OF STANDARDS INCLUDED IN THESE PLANS.
- 4.) MEMBERS OF JULIE KNOWN TO BE WITHIN THE LIMITS OF THE IMPROVEMENTS ARE:

AT&T: 65 W. WEBSTER STREET, FLOOR 3 - ENGINEERING, JOLIET, ILLINOIS 60431
 MARSEILLES TELEPHONE: 244 LINCOLN STREET, MARSEILLES, ILLINOIS 61341
 CITY OF MARSEILLES: 209 LINCOLN STREET, MARSEILLES, ILLINOIS 61341
 AMEREN: 340 RACCUGLIA DRIVE, P.O. BOX 1428, LASALLE, ILLINOIS 61301
 NICOR: 1844 FERRY ROAD, NAPERVILLE, ILLINOIS 60563
 MEDIACOM: 2506-1/2 N. BLOOMINGTON STREET, STREATOR, ILLINOIS 61364



F.A.S. 268 - MAIN STREET
SECTION 06-00173-00-SW
CITY OF MARSEILLES, LASALLE COUNTY

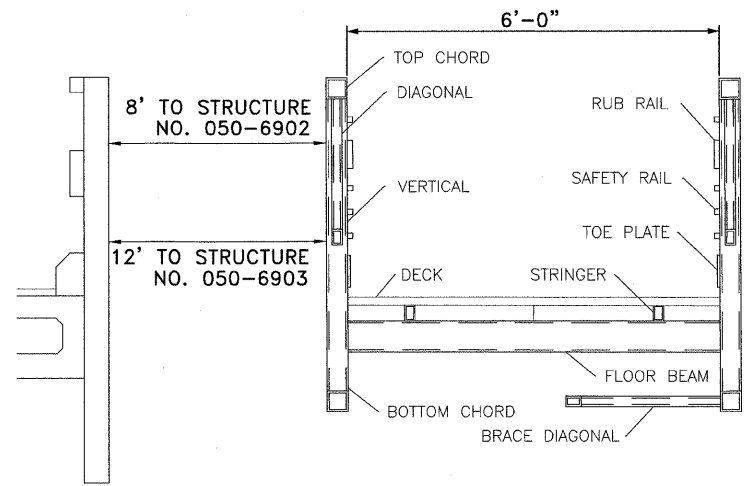
1304 GEMINI CIRCLE
 OTTAWA, IL 61350-6092
 TEL: 815-434-3025
 FAX: 815-434-3025

ETSCH
DUITLINGER
& ASSOCIATES
 Professional Engineers & Land Surveyors

PROFESSIONAL DESIGN
 FIRM # 184-000711
 DATE PLOTTED:
 OCTOBER 21, 2009
 DRAWN BY:
 A.R.G.
 CHECKED BY:

PROJECT NUMBER:
 2057.92
 DRAWING FILE:
 205792_NOTES
SHEET NO.
2 OF 15

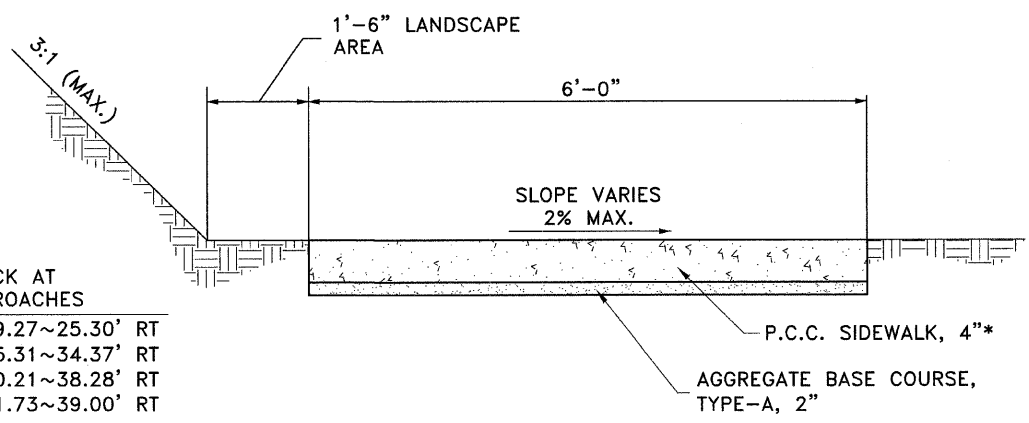
F.A.S. 268 - MAIN STREET
SECTION 06-00173-00-SW
CITY OF MARSEILLES, LASALLE COUNTY



TYPICAL PEDESTRIAN TRUSS SUPERSTRUCTURE SECTION
 STA 16+70.32~25.38' RT TO STA 17+75.16~33.02' RT
 AND
 STA 19+41.29~38.33' RT TO STA. 20+49.29~38.88' RT

BORING LOG #1
 STA 17+40.19 ~ 23.32' LT.
 ELEVATION = 487.3

DEPTH (FEET)	DESCRIPTION OF MATERIALS	LOG NO.	DATE	TIME	REMARKS
0-1	Medium Brown Fine To Coarse Sand	1	08	12	1
1-2	Loose Brown Fine To Coarse Sand	2	08	0	4
2-3	Loose Brown Fine To Coarse Sand	3	08	5	1
3-4	Loose Brown Fine To Coarse Sand	4	08	4	1
4-5	Loose Brown Fine To Coarse Sand	5	08	5	1
5-6	Loose Brown Fine To Coarse Sand	6	08	10	1
6-7	Loose Brown Fine To Coarse Sand	7	08	10	1



*SIDEWALK SHALL BE 5" THICK AT ALL PEDESTRIAN BRIDGE APPROACHES

STA 16+59.67~24.52' RT TO STA 16+69.27~25.30' RT
 STA 17+76.16~33.09' RT TO STA 17+95.31~34.37' RT
 STA 19+30.89~36.82' RT TO STA 19+40.21~38.28' RT
 STA 20+50.38~38.89' RT TO STA 20+71.73~39.00' RT

TYPICAL SIDEWALK SECTION

BORING LOG #2
 STA 16+70.94 ~ 29.00' RT.
 ELEVATION = 487.4

DEPTH (FEET)	DESCRIPTION OF MATERIALS	LOG NO.	DATE	TIME	REMARKS
0-1	Loose Brown Fine To Coarse Sand	1	08	6	9
1-2	Loose Brown Fine To Coarse Sand	2	08	4	11
2-3	Loose Brown Fine To Coarse Sand	3	08	5	1
3-4	Loose Brown Fine To Coarse Sand	4	08	1	11
4-5	Loose Brown Fine To Coarse Sand	5	08	5	1
5-6	Loose Brown Fine To Coarse Sand	6	08	9	1
6-7	Loose Brown Fine To Coarse Sand	7	08	14	1

1304 GEMINI CIRCLE
 OTTAWA, IL 61350-1692
 TEL: 815-434-3025
 FAX: 815-434-3053

ETSCHEID DUTTLINGER & ASSOCIATES
 Professional Engineers & Land Surveyors

PROFESSIONAL DESIGN FIRM # 184-000711
 DATE PLOTTED: OCTOBER 21, 2009
 DRAWN BY: A.R.G.
 CHECKED BY:
 PROJECT NUMBER: 2057.92
 DRAWING FILE: 205792_NOTES
SHEET NO. 3 OF 15

F.A.S. ROUTE NO.	SECTION	ILLINOIS PROJECT	CONTRACT NO.	COUNTY	TOTAL SHEETS	SHEET NUMBER
268	06-00173-00-SW	TE-0003(58)	87359	LASALLE	15	4

SCHEDULE OF QUANTITIES

20200100 EARTH EXCAVATION	
<u>CU YD</u>	<u>LOCATION</u>
286	STA 0+00 (SW) TO STA 14+14
1	STA 16+60 TO STA 16+69
2	STA 17+76 TO STA 17+95
1	STA 19+31 TO STA 19+40
2	STA 20+50 TO STA 20+72
292	TOTAL
21101615 TOPSOIL FURNISH & PLACE, 4"	
<u>SQ YD</u>	<u>LOCATION</u>
499	STA 0+00 (SW) TO STA 14+14
7	STA 16+60 TO STA 16+69
20	STA 17+76 TO STA 17+95
10	STA 19+31 TO STA 19+40
45	STA 20+50 TO STA 20+72
581	TOTAL
25000115 SEEDING, CLASS 1B	
<u>ACRE</u>	<u>LOCATION</u>
0.1	STA 0+00 (SW) TO STA 14+14 AS REQUIRED AROUND SIDEWALKS AND ABUTMENTS, AND AS DIRECTED BY THE ENGINEER
0.1	STA 16+60 TO STA 16+69 AS REQUIRED AROUND SIDEWALKS AND ABUTMENTS, AND AS DIRECTED BY THE ENGINEER
0.2	TOTAL
25000400 NITROGEN FERTILIZER NUTRIENT	
<u>POUND</u>	<u>LOCATION</u>
9	STA 0+00 (SW) TO STA 14+14 AS REQUIRED AROUND SIDEWALKS AND ABUTMENTS, AND AS DIRECTED BY THE ENGINEER
9	STA 16+60 TO STA 16+69 AS REQUIRED AROUND SIDEWALKS AND ABUTMENTS, AND AS DIRECTED BY THE ENGINEER
18	TOTAL
25000500 PHOSPHOROUS FERTILIZER NUTRIENT	
<u>POUND</u>	<u>LOCATION</u>
9	STA 0+00 (SW) TO STA 14+14 AS REQUIRED AROUND SIDEWALKS AND ABUTMENTS, AND AS DIRECTED BY THE ENGINEER
9	STA 16+60 TO STA 16+69 AS REQUIRED AROUND SIDEWALKS AND ABUTMENTS, AND AS DIRECTED BY THE ENGINEER
18	TOTAL
25000600 POTASSIUM FERTILIZER NUTRIENT	
<u>POUND</u>	<u>LOCATION</u>
9	STA 0+00 (SW) TO STA 14+14 AS REQUIRED AROUND SIDEWALKS AND ABUTMENTS, AND AS DIRECTED BY THE ENGINEER
9	STA 16+60 TO STA 16+69 AS REQUIRED AROUND SIDEWALKS AND ABUTMENTS, AND AS DIRECTED BY THE ENGINEER
18	TOTAL
25100115 MULCH, METHOD 2	
<u>ACRE</u>	<u>LOCATION</u>
0.1	STA 0+00 (SW) TO STA 14+14 AS REQUIRED AROUND SIDEWALKS AND ABUTMENTS, AND AS DIRECTED BY THE ENGINEER
0.1	STA 16+60 TO STA 16+69 AS REQUIRED AROUND SIDEWALKS AND ABUTMENTS, AND AS DIRECTED BY THE ENGINEER
0.2	TOTAL
28000400 PERIMETER EROSION BARRIER	
<u>FOOT</u>	<u>LOCATION</u>
609	STA 0+00 (SW) TO STA 14+14
609	TOTAL
28000500 INLET & PIPE PROTECTION	
<u>EACH</u>	<u>LOCATION</u>
1	STA 11+44 RT
1	STA 14+06 RT
2	TOTAL
35100120 AGGREGATE BASE COURSE, TYPE A, 2"	
<u>SQ YD</u>	<u>LOCATION</u>
386.5	STA 0+00 (SW) TO STA 14+14
13	STA 16+60 TO STA 16+69
6.5	STA 17+76 TO STA 17+95
9.5	STA 19+31 TO STA 19+40
15	STA 20+50 TO STA 20+72
5.5	STA 21+32 TO STA 21+37
433	TOTAL

42400100 PORTLAND CEMENT CONCRETE SIDEWALK, 4"	
<u>SQ FT</u>	<u>LOCATION</u>
3479	STA 0+00 (SW) TO STA 14+14
49	STA 21+32 TO STA 21+37
3528	TOTAL
42400200 PORTLAND CEMENT CONCRETE SIDEWALK, 5"	
<u>SQ FT</u>	<u>LOCATION</u>
58	STA 16+60 TO STA 16+69
116	STA 17+76 TO STA 17+95
58	STA 19+31 TO STA 19+40
134	STA 20+50 TO STA 20+72
366	TOTAL
42400800 DETECTABLE WARNINGS	
<u>SQ YD</u>	<u>LOCATION</u>
14	STA 20+72
12	STA 21+32
26	TOTAL
44000100 PAVEMENT REMOVAL	
<u>SQ YD</u>	<u>LOCATION</u>
4	STA 16+60 TO STA 16+71
70	STA 20+36 TO STA 20+75
74	TOTAL
44000600 SIDEWALK REMOVAL	
<u>SQ FT</u>	<u>LOCATION</u>
116	STA 17+66 TO STA 17+95
49	STA 21+32 TO STA 21+37
165	TOTAL
* 50104605 CONCRETE RETAINING WALL REMOVAL	
<u>CU YD</u>	<u>LOCATION</u>
0.5	STA 16+76
0.2	STA 17+61
0.4	STA 19+55
0.5	STA 20+35
1.6	TOTAL
50200100 STRUCTURE EXCAVATION	
<u>CU YD</u>	<u>LOCATION</u>
8	STA 16+69
8	STA 17+76
7	STA 19+40
7	STA 20+50
30	TOTAL
50300225 CONCRETE STRUCTURES	
<u>CU YD</u>	<u>LOCATION</u>
2.6	STA 16+69
2.6	STA 17+76
2.6	STA 19+40
2.6	STA 20+50
10.4	TOTAL
50800105 REINFORCEMENT BARS	
<u>POUND</u>	<u>LOCATION</u>
230	STA 16+69
230	STA 17+76
230	STA 19+40
230	STA 20+50
920	TOTAL
50900605 HANDRAIL REMOVAL	
<u>FOOT</u>	<u>LOCATION</u>
10	STA 20+36
10	TOTAL

51201300 FURNISH STEEL PILES HP 8X36	
<u>FOOT</u>	<u>LOCATION</u>
38	STA 16+69
40	STA 17+76
40	STA 19+40
40	STA 20+50
158	TOTAL
51202305 DRIVING PILES	
<u>FOOT</u>	<u>LOCATION</u>
36	STA 16+69
38	STA 17+76
38	STA 19+40
38	STA 20+50
150	TOTAL
* 60600705 CONCRETE CURB, TYPE B (ABUTTING EXISTING PAVEMENT)	
<u>FOOT</u>	<u>LOCATION</u>
77	STA 20+36 TO STA 20+75
77	TOTAL
* 66410300 CHAIN LINK FENCE REMOVAL	
<u>ACRE</u>	<u>LOCATION</u>
22	STA 17+58 TO STA 17+79
22	TOTAL
67100100 MOBILIZATION	
<u>L SUM</u>	<u>LOCATION</u>
1	AS REQUIRED
1	TOTAL
70102620 TRAFFIC CONTROL & PROTECTION STANDARD 701501	
<u>L SUM</u>	<u>LOCATION</u>
1	AS REQUIRED OR AS DIRECTED BY THE ENGINEER
1	TOTAL
78001150 PAINT PAVEMENT MARKING - LINE 12"	
<u>FOOT</u>	<u>LOCATION</u>
121	STA 20+72 TO STA 21+32
121	TOTAL
* XX001758 WOOD FENCE REMOVAL	
<u>FOOT</u>	<u>LOCATION</u>
32	STA 17+61 TO STA 17+90
32	TOTAL
* X0322508 PEDESTRIAN TRUSS SUPERSTRUCTURE	
<u>SQ FT</u>	<u>LOCATION</u>
630	STA 16+70 TO STA 17+75
648	STA 19+41 TO STA 20+49
1278	TOTAL

F.A.S. 268 - MAIN STREET
SECTION 06-00173-00-SW
CITY OF MARSEILLES, LASALLE COUNTY

1304 GEMINI CIRCLE
 OTTAWA, IL 61350-0692
 TEL: 815-334-9925
 FAX: 815-334-9953

E TSCHIED
DUTTlinger
& ASSOCIATES
 Professional Engineers & Land Surveyors

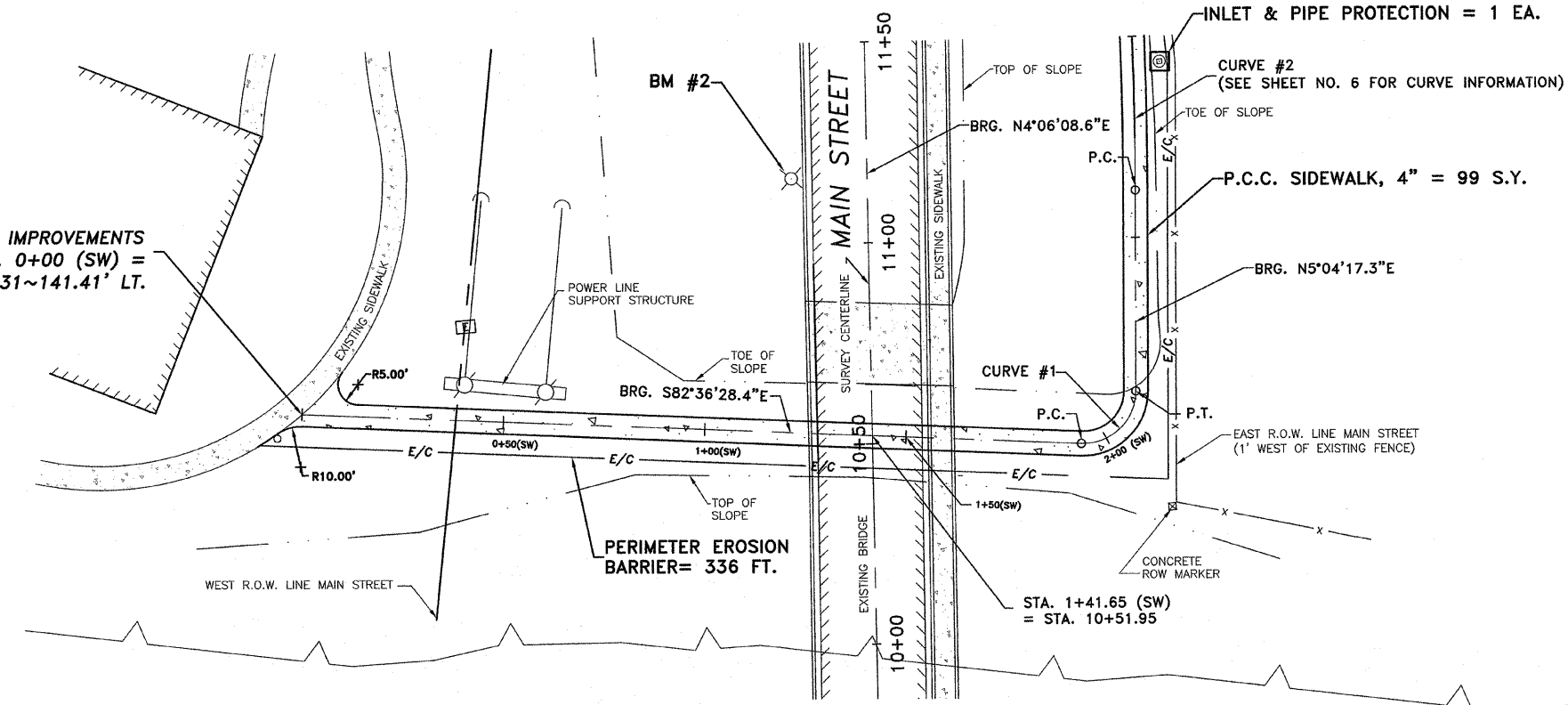
PROFESSIONAL DESIGN
 FIRM # 184-000711
 DATE PLOTTED:
 OCTOBER 21, 2009
 DRAWN BY:
 A.R.G.
 CHECKED BY:
 PROJECT NUMBER:
 205792
 DRAWING FILE:
 205792_NOTES

SHEET NO.
4 OF 15

SEE SHEET NO. 6

F.A.S. ROUTE NO.	SECTION	ILLINOIS PROJECT NO.	CONTRACT NO.	COUNTY	TOTAL SHEETS	SHEET NUMBER
268	06-00173-00-SW		87359	LASALLE	15	5

BEGIN SIDEWALK IMPROVEMENTS
STA. 0+00 (SW) =
STA. 10+60.31~141.41' LT.



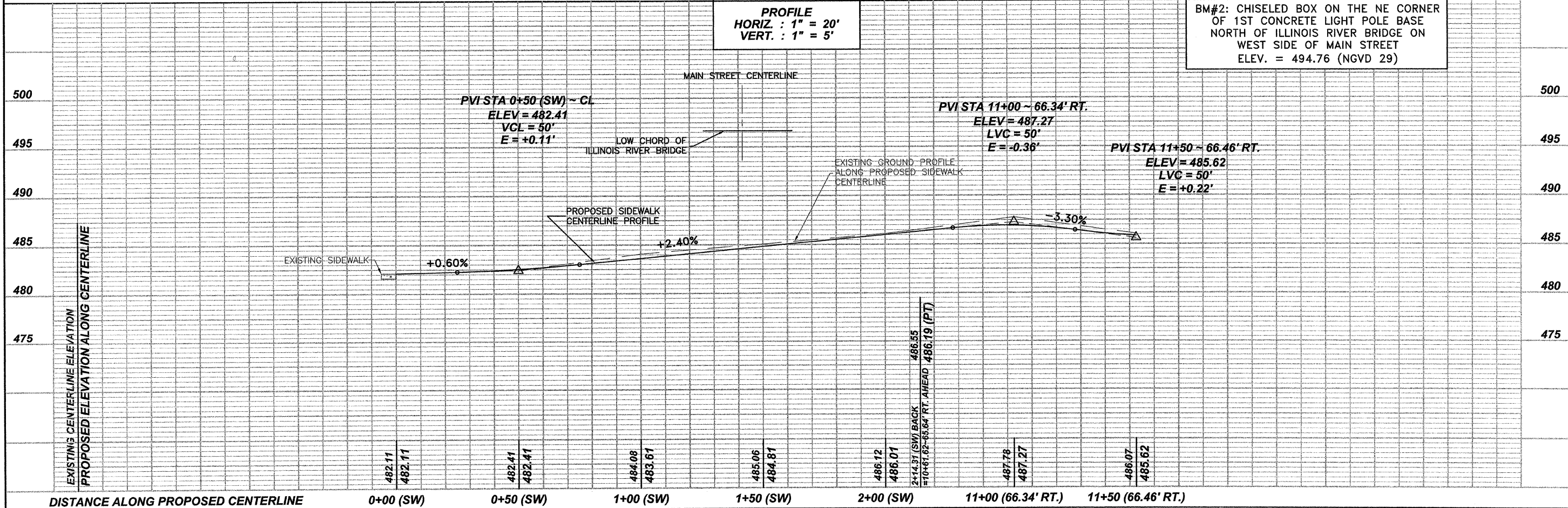
CURVE #1 DATA
P.C. STA. 1+93.37 (SW)
P.T. STA. 2+14.31 (SW)
P.I. STA. 2+06.94 (SW)
D = 92°19'14"
R = 13.00'
L = 20.95'
T = 13.54'
L.C. = 18.75'
CH. BRG. = N51°13'54.45"E

ILLINOIS RIVER
NWL = 467±
BFE = 481.5

(SW) INDICATES STATIONING ALONG THE
CENTERLINE OF THE PROPOSED SIDEWALK

SCALES
PLAN
HORIZ. : 1" = 20'
PROFILE
HORIZ. : 1" = 20'
VERT. : 1" = 5'

BM#2: CHISELED BOX ON THE NE CORNER
OF 1ST CONCRETE LIGHT POLE BASE
NORTH OF ILLINOIS RIVER BRIDGE ON
WEST SIDE OF MAIN STREET
ELEV. = 494.76 (NGVD 29)



13M GEMINI CIRCLE
OTTAWA, IL 61454-3925
TEL: 815-634-3925
FAX: 815-634-3933

**E TSCHIED
DUTTLINGER
& ASSOCIATES INC.**
Professional Engineers & Land Surveyors

PROFESSIONAL DESIGN
FIRM # 184-000711
DATE PLOTTED:
OCTOBER 21, 2009
DRAWN BY:
R.M.S.
CHECKED BY:
PROJECT NUMBER:
2057.92
DRAWING FILE:
J:\205792_BASE2.DWG
SHEET NO.

5 OF 15

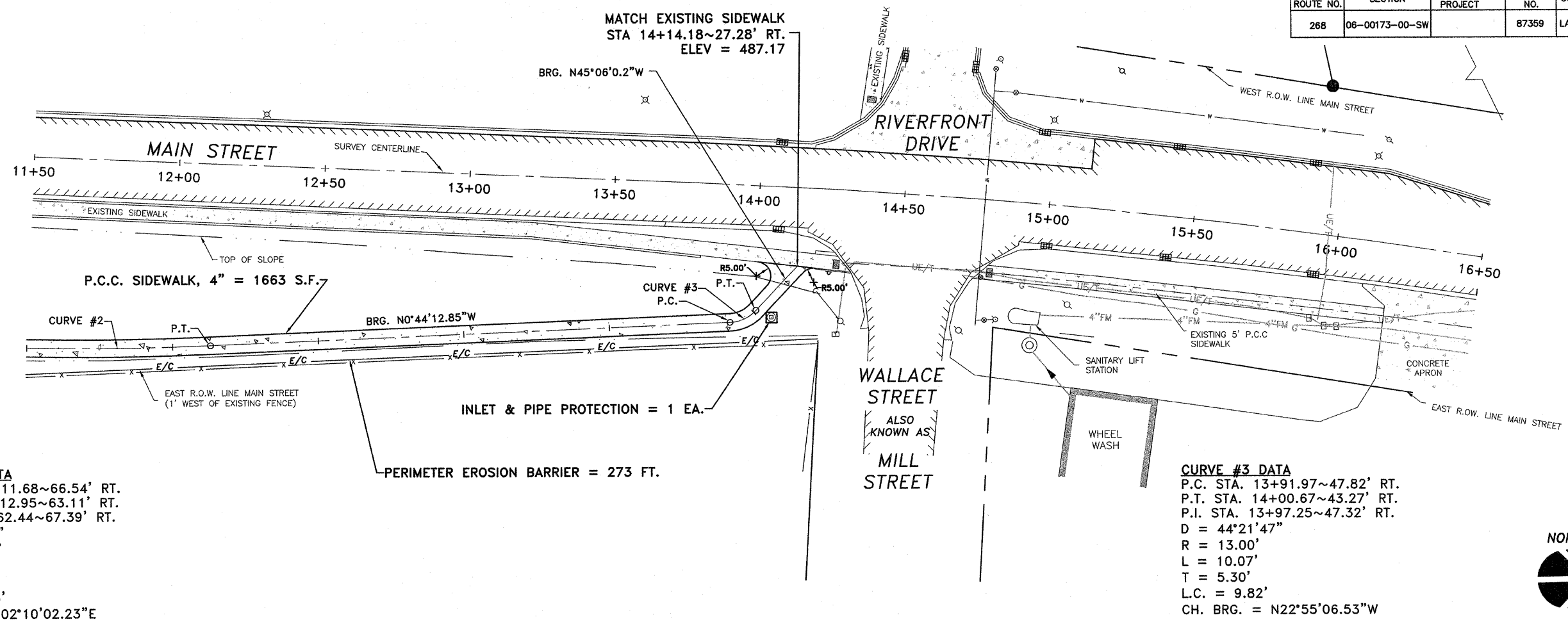
SIDEWALK IMPROVEMENTS ~ 0+00 (SW) TO 11+50

F.A.S. ROUTE NO.	SECTION	ILLINOIS PROJECT	CONTRACT NO.	COUNTY	TOTAL SHEETS	SHEET NUMBER
268	06-00173-00-SW		87359	LASALLE	15	6

F.A.S. 268 - MAIN STREET
SECTION 06-00173-00-SW
CITY OF MARSEILLES, LASALLE COUNTY

SEE SHEET NO. 5

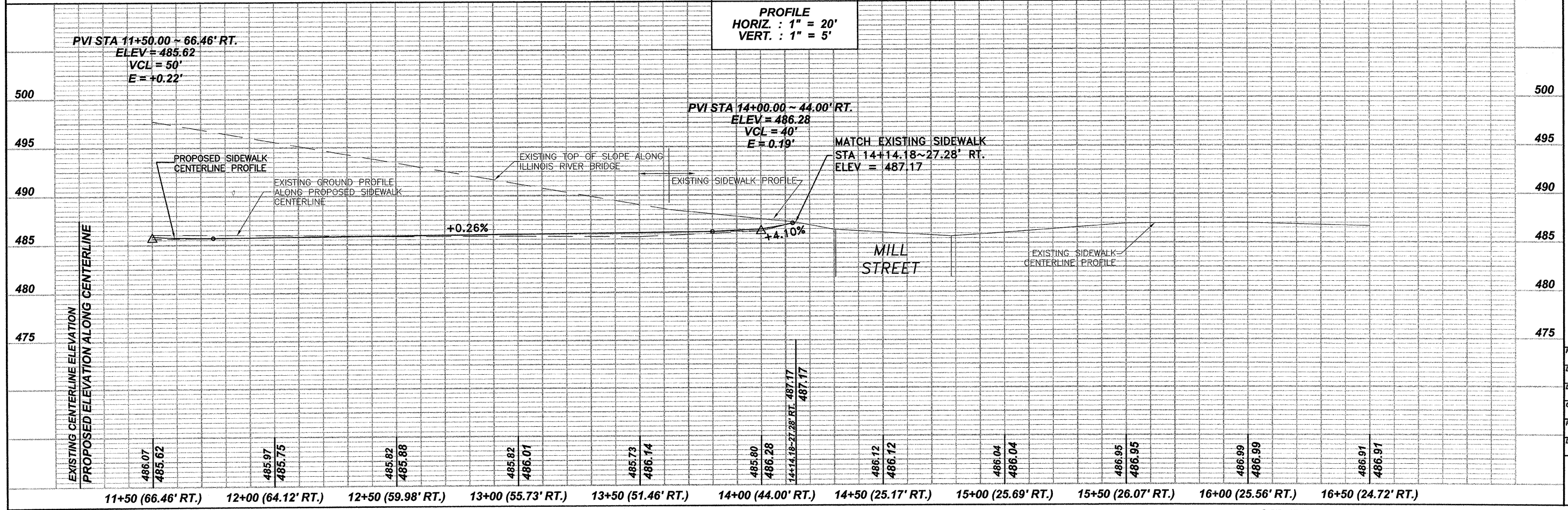
SEE SHEET NO. 7



CURVE #2 DATA
P.C. STA. 11+11.68~66.54' RT.
P.T. STA. 12+12.95~63.11' RT.
P.I. STA. 11+62.44~67.39' RT.
D = 05°48'30"
R = 1,000.00'
L = 101.38'
T = 50.73'
L.C. = 101.33'
CH. BRG. = N02°10'02.23"E

CURVE #3 DATA
P.C. STA. 13+91.97~47.82' RT.
P.T. STA. 14+00.67~43.27' RT.
P.I. STA. 13+97.25~47.32' RT.
D = 44°21'47"
R = 13.00'
L = 10.07'
T = 5.30'
L.C. = 9.82'
CH. BRG. = N22°55'06.53"W

SCALES
PLAN
HORIZ. : 1" = 20'
PROFILE
HORIZ. : 1" = 20'
VERT. : 1" = 5'



1304 GEMINI CIRCLE
OTTAWA, IL 61350-682
TEL: 815-244-3923
FAX: 815-244-3923

ETSCHED
DUTTLINGER
& ASSOCIATES INC.
Professional Engineers & Land Surveyors

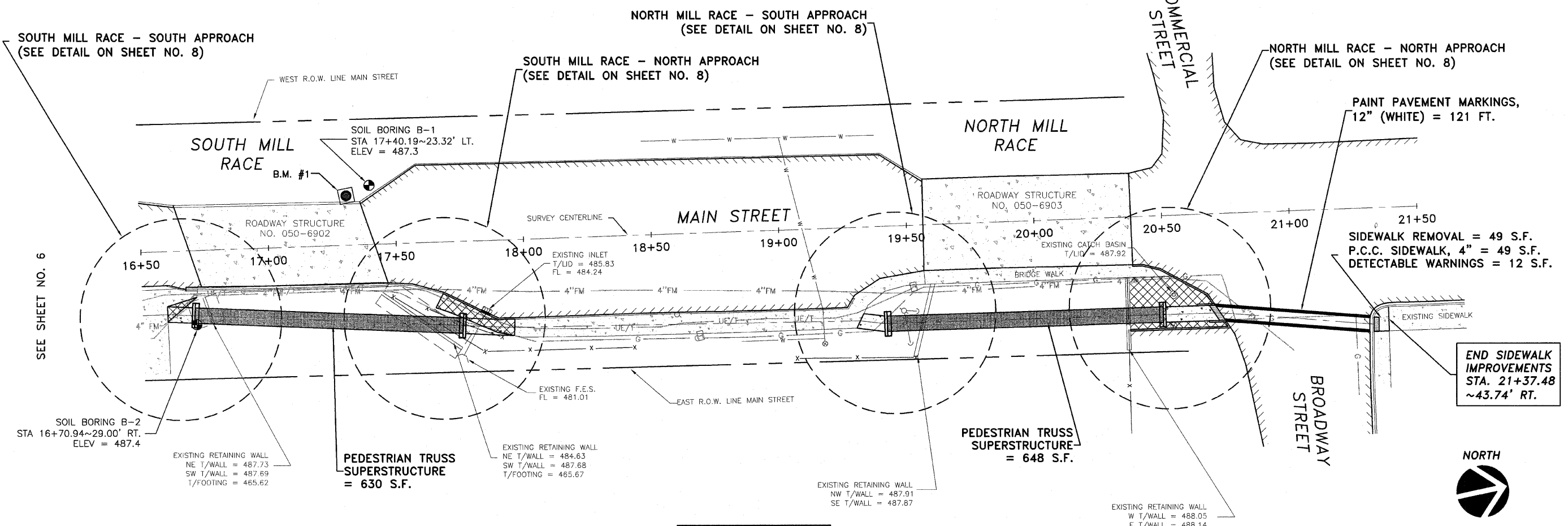
PROFESSIONAL DESIGN
FIRM # 184-000711
DATE PLOTTED:
OCTOBER 21, 2009
DRAWN BY:
R.M.S.
CHECKED BY:
PROJECT NUMBER:
2057.92
DRAWING FILE:
J:\200792_BASE2.DWG
SHEET NO.

6 OF 15

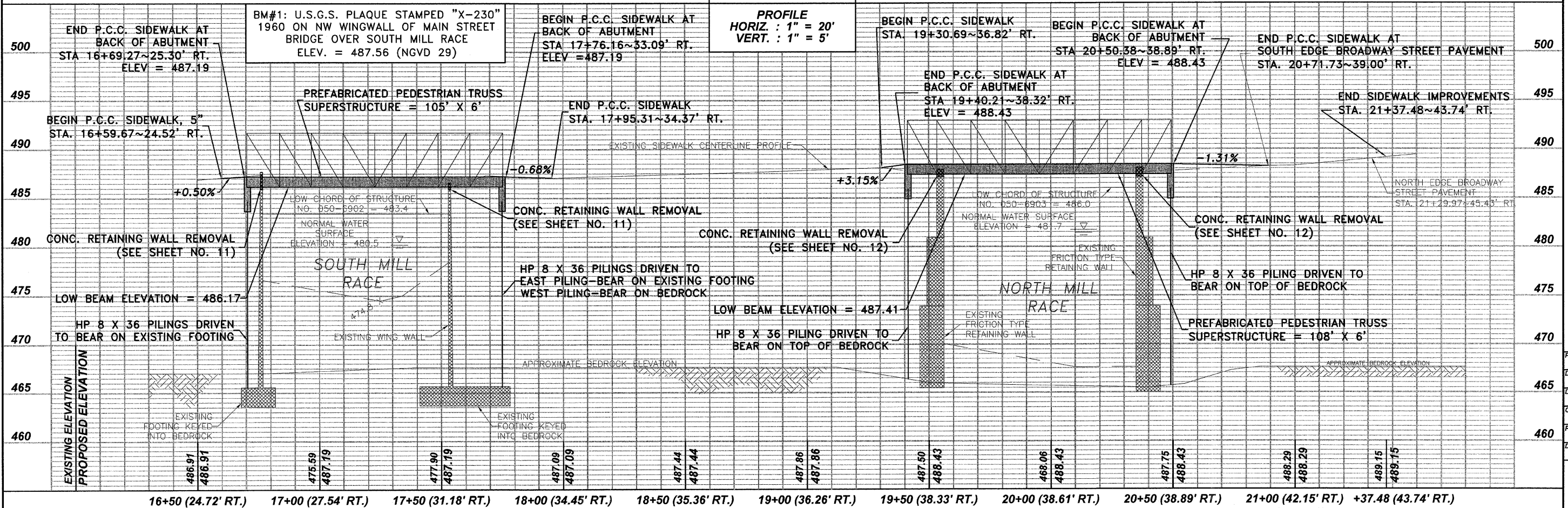
SIDEWALK IMPROVEMENTS ~ 11+50 TO 16+50

F.A.S. ROUTE NO.	SECTION	ILLINOIS PROJECT	CONTRACT NO.	COUNTY	TOTAL SHEETS	SHEET NUMBER
268	06-00173-00-SW	TE-0003(58)	87359	LASALLE	15	7

F.A.S. 268 - MAIN STREET
 SECTION 06-00173-00-SW
 CITY OF MARSEILLES, LASALLE COUNTY



SCALES
 PLAN
 HORIZ. : 1" = 20'
 PROFILE
 HORIZ. : 1" = 20'
 VERT. : 1" = 5'



134 GEMINI CIRCLE
 OTTAWA, IL 61350-1092
 TEL: 815-434-3025
 FAX: 815-434-3033

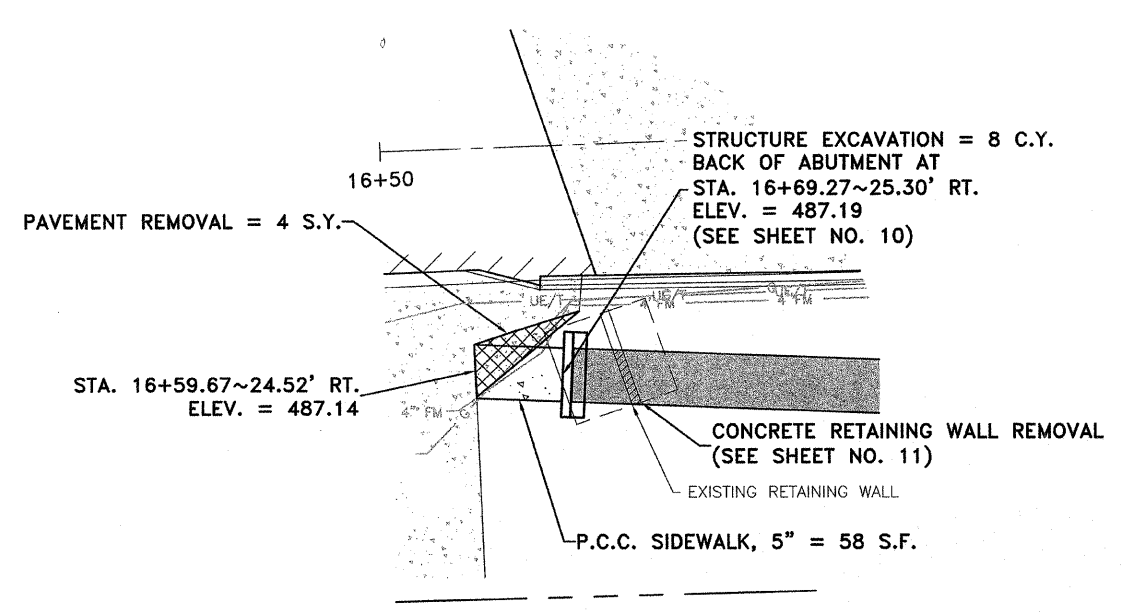
ETSCHIED
 DUTTLINGER
 & ASSOCIATES INC.
 Professional Engineers & Land Surveyors

PROFESSIONAL DESIGN
 FIRM # 184-000711
 DATE PLOTTED:
 OCTOBER 21, 2009
 DRAWN BY:
 R.M.S.
 CHECKED BY:
 PROJECT NUMBER:
 2057.92
 DRAWING FILE:
 J:\205792_BASE2.DWG

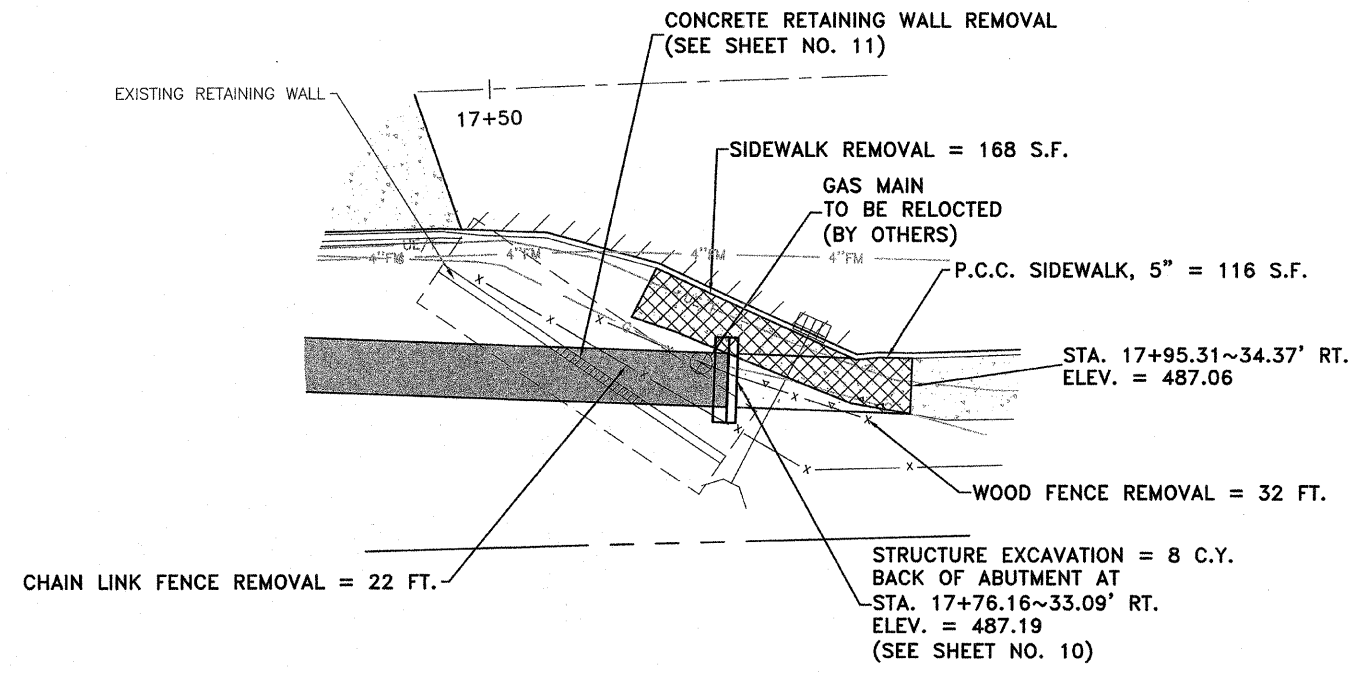
SHEET NO. 7 OF 15

SIDEWALK & BRIDGE IMPROVEMENTS ~ 16+50 TO 21+37.48

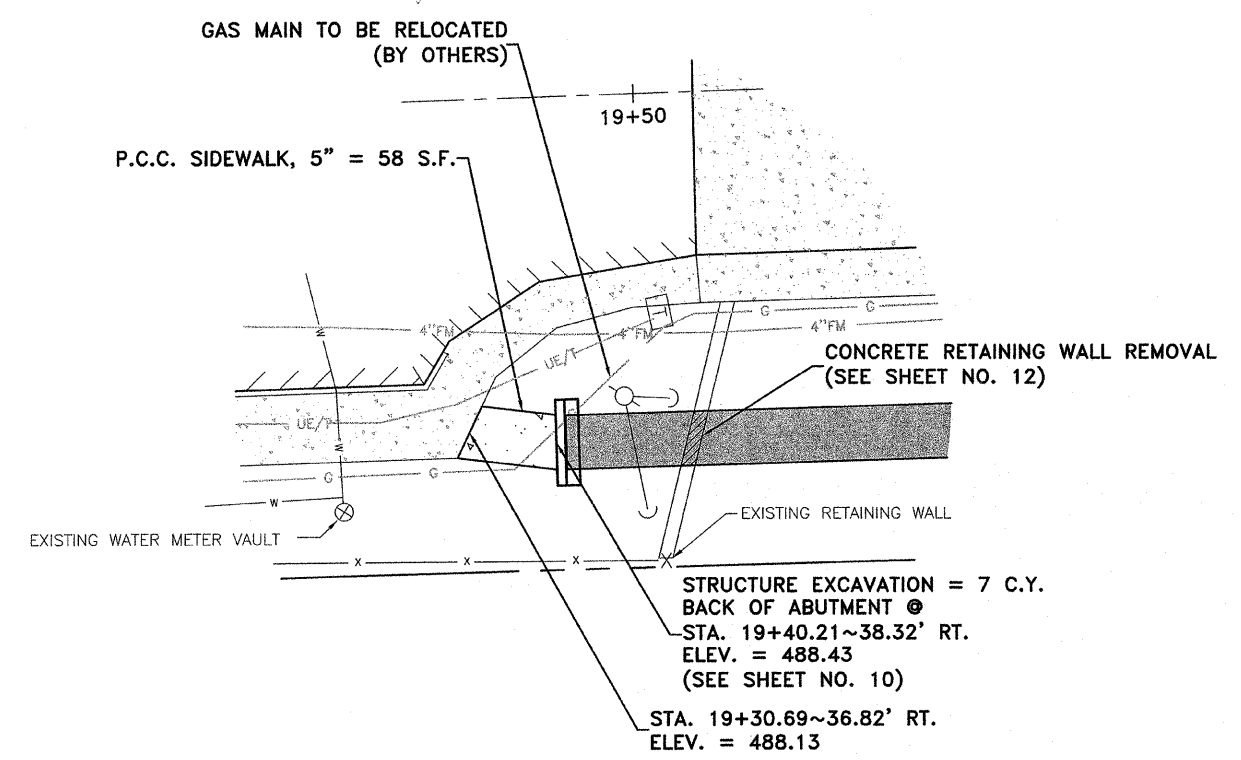
F.A.S. ROUTE NO.	SECTION	ILLINOIS PROJECT	CONTRACT NO.	COUNTY	TOTAL SHEETS	SHEET NUMBER
268	06-00173-00-SW		87359	LASALLE	15	8



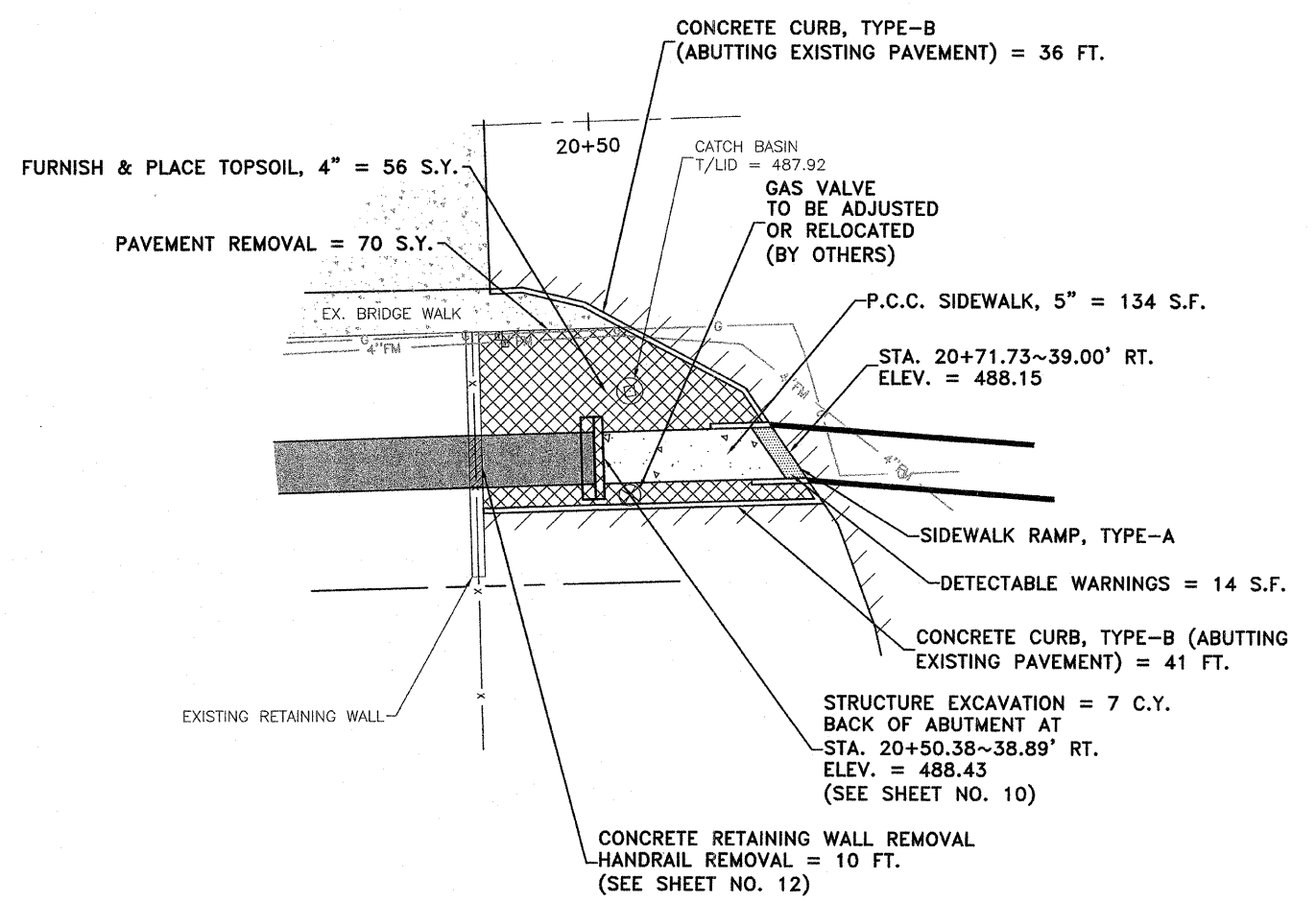
SOUTH MILL RACE - SOUTH APPROACH
NOT TO SCALE



SOUTH MILL RACE - NORTH APPROACH
NOT TO SCALE



NORTH MILL RACE - SOUTH APPROACH
NOT TO SCALE



NORTH MILL RACE - NORTH APPROACH
NOT TO SCALE

F.A.S. 268 - MAIN STREET
SECTION 06-00173-00-SW
CITY OF MARSEILLES, LASALLE COUNTY

1304 GEMINY CIRCLE
 OTTAWA, IL 61350-1092
 TEL: 815-434-3953
 FAX: 815-434-3953

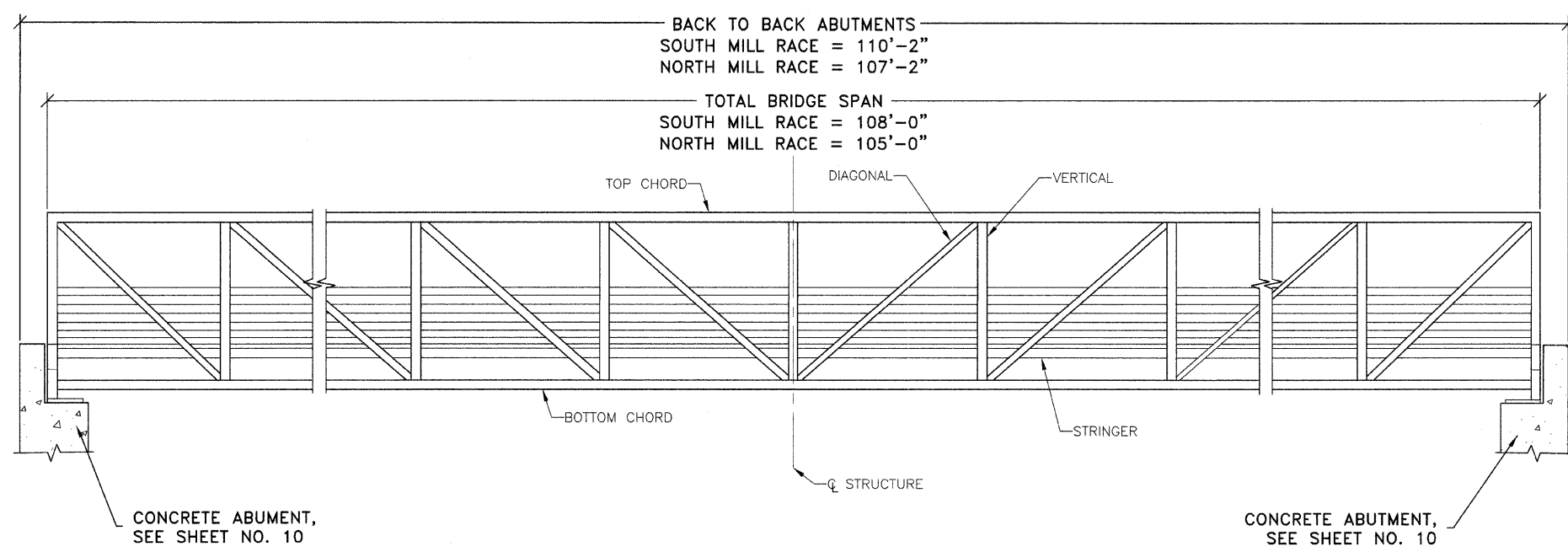
ETSCHIED
DUTTLINGER
& ASSOCIATES INC.
 Professional Engineers & Land Surveyors

PROFESSIONAL DESIGN
 FIRM # 104-000711
 DATE PLOTTED:
 OCTOBER 21, 2009
 DRAWN BY:
 R.M.S.
 CHECKED BY:
 PROJECT NUMBER:
 2057.92
 DRAWING FILE:
 J:\205792_BASE2.DWG

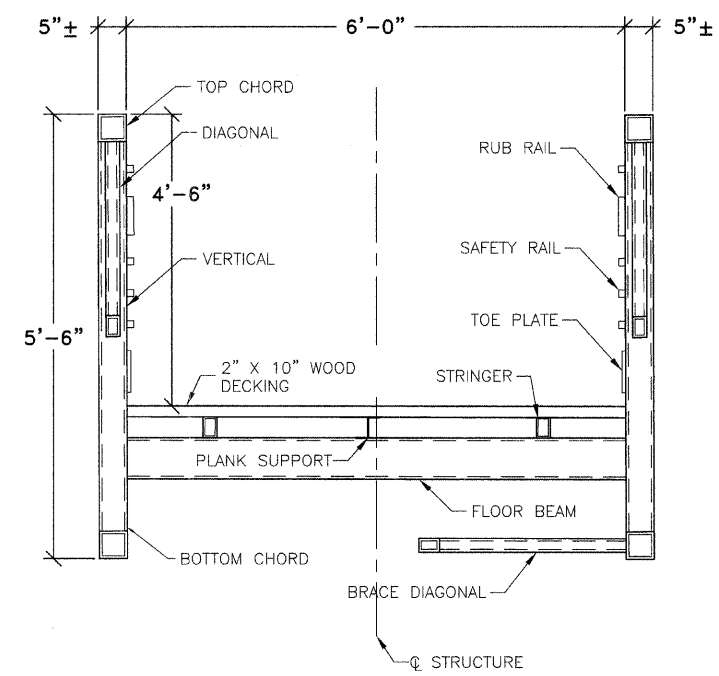
SHEET NO.
8 OF 15

F.A.S. ROUTE NO.	SECTION	ILLINOIS PROJECT	CONTRACT NO.	COUNTY	TOTAL SHEETS	SHEET NUMBER
268	06-00173-00-SW	TE-0003(58)	87359	LASALLE	15	9

F.A.S. 268 - MAIN STREET
SECTION 06-00173-00-SW
CITY OF MARSEILLES, LASALLE COUNTY



PEDESTRIAN TRUSS SUPERSTRUCTURE - ELEVATION
NOT TO SCALE



PEDESTRIAN TRUSS SUPERSTRUCTURE - CROSS SECTION
NOT TO SCALE

ALL MATERIALS AND CONSTRUCTION SHALL CONFORM TO THE LATEST EDITION OF THE ILLINOIS DEPARTMENT OF TRANSPORTATION SPECIFICATIONS FOR ROAD AND BRIDGE CONSTRUCTION, JANUARY 1, 2007.

- DESIGN SPECIFICATIONS:
- 1997 AASHTO GUIDE SPECIFICATIONS FOR DESIGN OF PEDESTRIAN BRIDGES
- BRIDGE DEAD LOAD = 60 PSF
 - BRIDGE LIVE LOAD = 85 PSF
 - SEISMIC PERFORMANCE CATEGORY (SPC): A
 - BEDROCK ACCELERATION COEFFICIENT (A): 0.04
 - SITE COEFFICIENT (S): 1.0
- DESIGN STRESSES:
- STEEL: $F_y = 50$ ksi
 - CONCRETE: $f'_c = 4,000$ psi

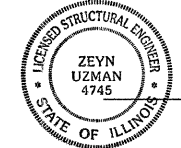
- GENERAL NOTES:
- 1.) BRIDGE INSTALLATION SHALL BE IN ACCORDANCE WITH THE BRIDGE MANUFACTURER'S SHOP DRAWINGS, INSTRUCTIONS, AND/OR RECOMMENDATIONS. THE CONTRACTOR SHALL PROVIDE ALL MATERIALS, LABOR, AND EQUIPMENT TO COMPLETELY INSTALL THE PREFABRICATED BRIDGES AND MAKE THE PROPER CONNECTIONS TO THE ABUTMENTS. THE CONTRACTOR SHALL COORDINATE ALL CONSTRUCTION, DELIVERY AND INSTALLATION OF THE BRIDGE WITH THE MANUFACTURER.
 - 2.) EACH PREFABRICATED BRIDGE INCLUDES THE FOLLOWING:
 - A.) FINISH: ILDOT 3 COAT PAINT SYSTEM
 - B.) DECKING MATERIAL: 2" X 10" DOUGLAS FIR
 - C.) DESIGN STRESSES IN CONFORMANCE WITH AASHTO
 - D.) SAFETY RAILS: HORIZONTAL SAFETY RAILS SPACED AT 4" ON CENTER
 - E.) WOOD RUBRAIL AND TOEPLATES
 - F.) PEDESTRIAN LIVE LOAD: 85 PSF
 - G.) 2 SECTIONS
 - 3.) BRIDGE MANUFACTURER SHALL PROVIDE ALL SHOP AND FABRICATION DRAWINGS. FINAL DRAWINGS SHALL BE PREPARED BY AND SEALED BY AN ILLINOIS LICENSED STRUCTURAL ENGINEER.
 - 4.) EXACT DIMENSIONS OF BRIDGE COMPONENTS TO BE PROVIDED BY THE PREFABRICATED BRIDGE MANUFACTURER.
 - 5.) PILES ON EXISTING FOUNDATIONS SHALL BE DRIVEN TO TOP OF EXISTING FOOTING. LIGHTLY TAP PILE AT TOP OF FOOTING. CARE SHALL BE TAKEN NOT TO DAMAGE FOOTING. AS AN ALTERNATE, PILES MAY BE PLACED IN PRECORED HOLES TO TOP OF FOOTING.

1304 GEMINI CIRCLE
 OTTAWA, IL 61350-1692
 TEL: 815-484-9025
 FAX: 815-484-9053

ETSCHIED
DUTTLINGER
& ASSOCIATES INC.
 Professional Engineers & Land Surveyors

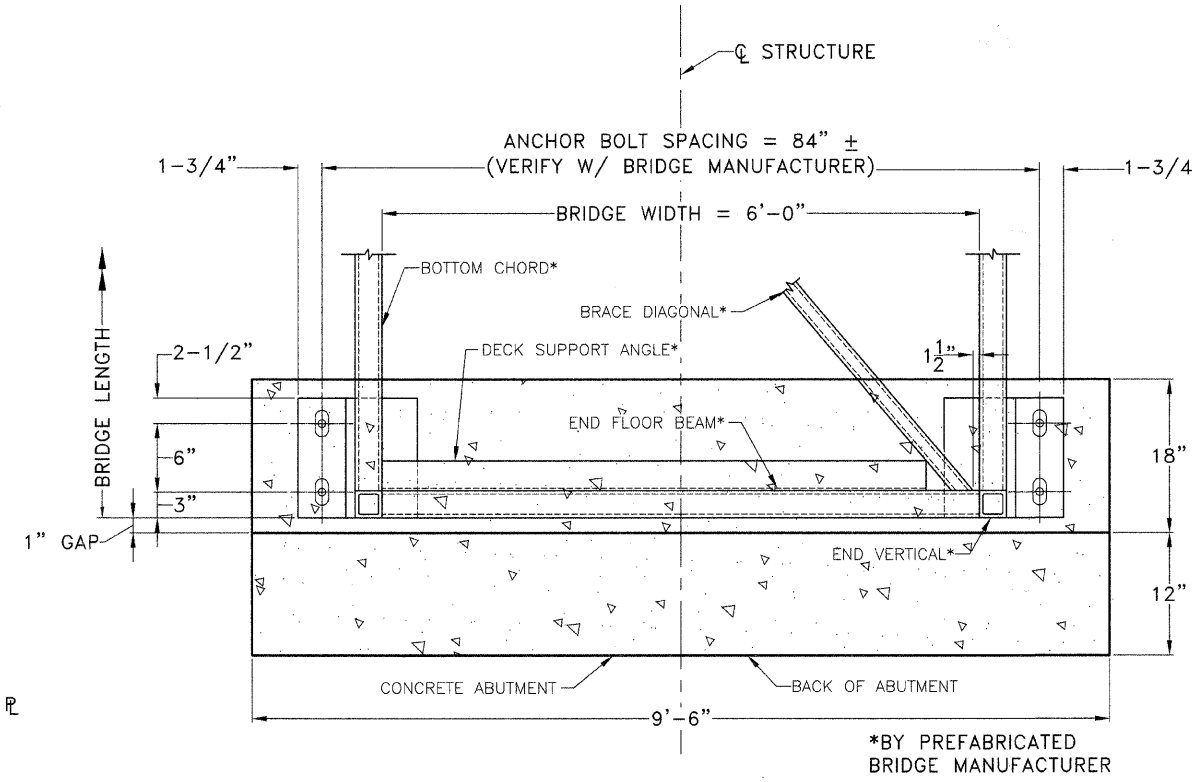
PROFESSIONAL DESIGN FIRM # 184-000711
DATE PLOTTED: OCTOBER 21, 2009
DRAWN BY: R.M.S.
CHECKED BY:
PROJECT NUMBER: 2057.92
DRAWING FILE: J:\205792_BRIDGE.DWG

SHEET NO.
9 OF 15

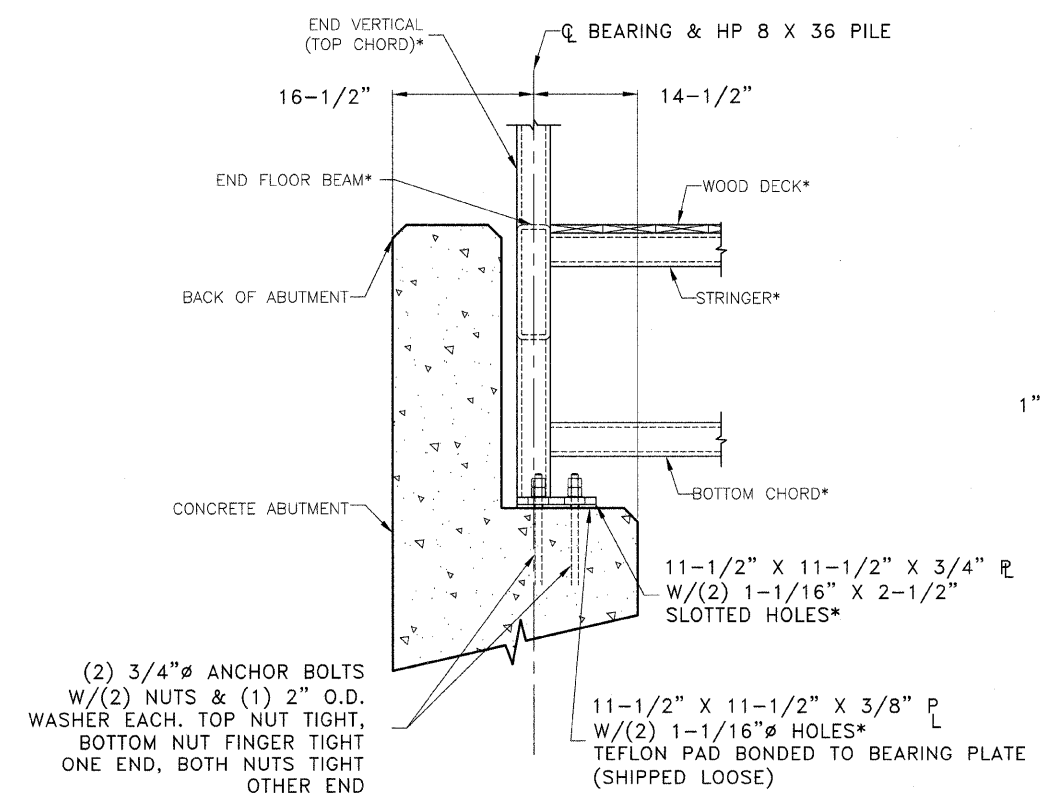


ZEYN B. UZMAN
 S.E. NO. 081-004745
 EXPIRES NOVEMBER 30, 2010

DATE: 10/21/09



PEDESTRIAN TRUSS SUPERSTRUCTURE BEARING ASSEMBLY - PLAN VIEW
NOT TO SCALE

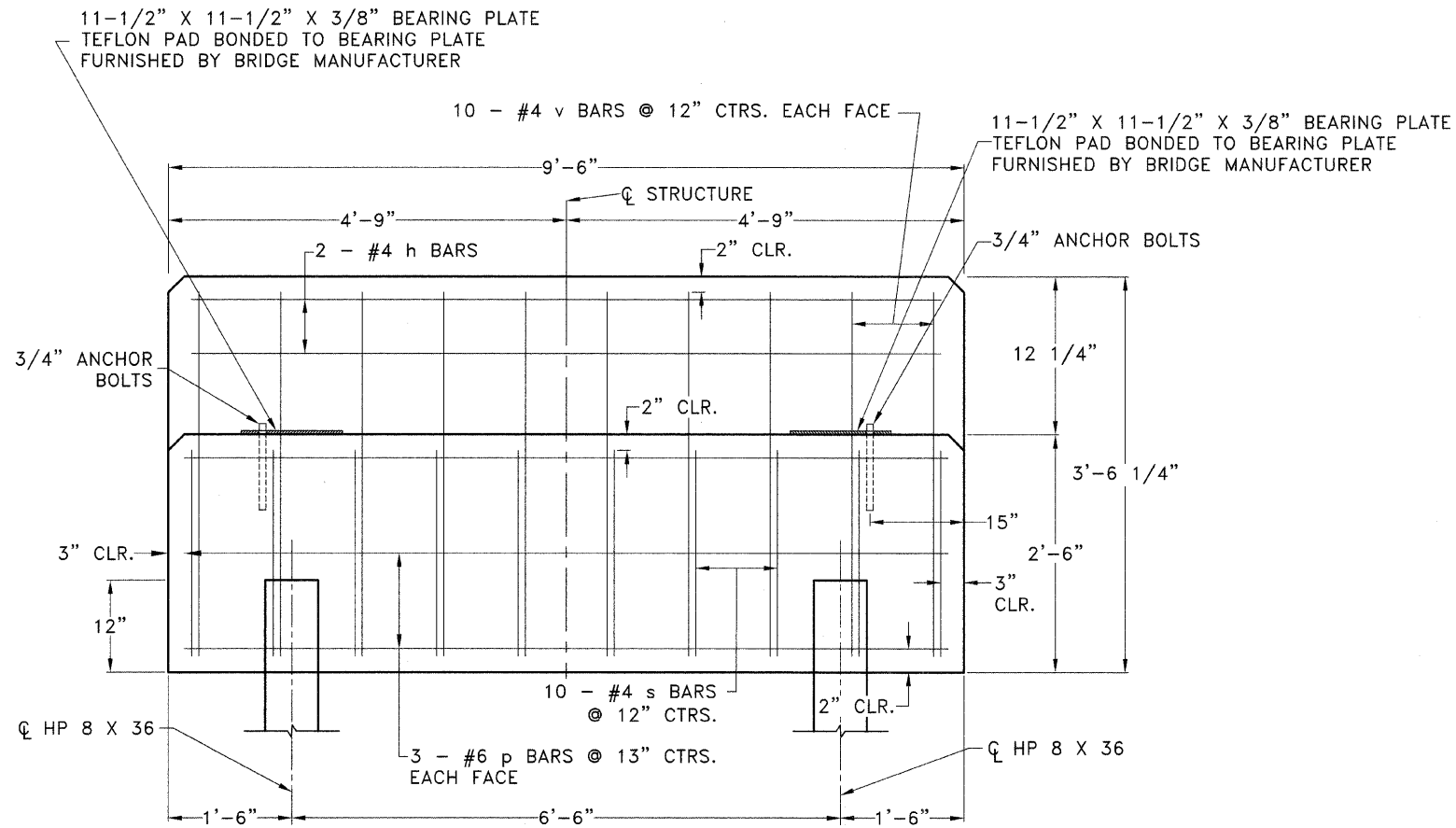


PEDESTRIAN TRUSS SUPERSTRUCTURE BEARING ASSEMBLY - SIDE VIEW
NOT TO SCALE

*FURNISHED BY PREFABRICATED BRIDGE MANUFACTURER

F.A.S. ROUTE NO.	SECTION	ILLINOIS PROJECT	CONTRACT NO.	COUNTY	TOTAL SHEETS	SHEET NUMBER
268	06-00173-00-SW	TE-0003(58)	87359	LASALLE	15	10

F.A.S. 268 - MAIN STREET
SECTION 06-00173-00-SW
CITY OF MARSEILLES, LASALLE COUNTY



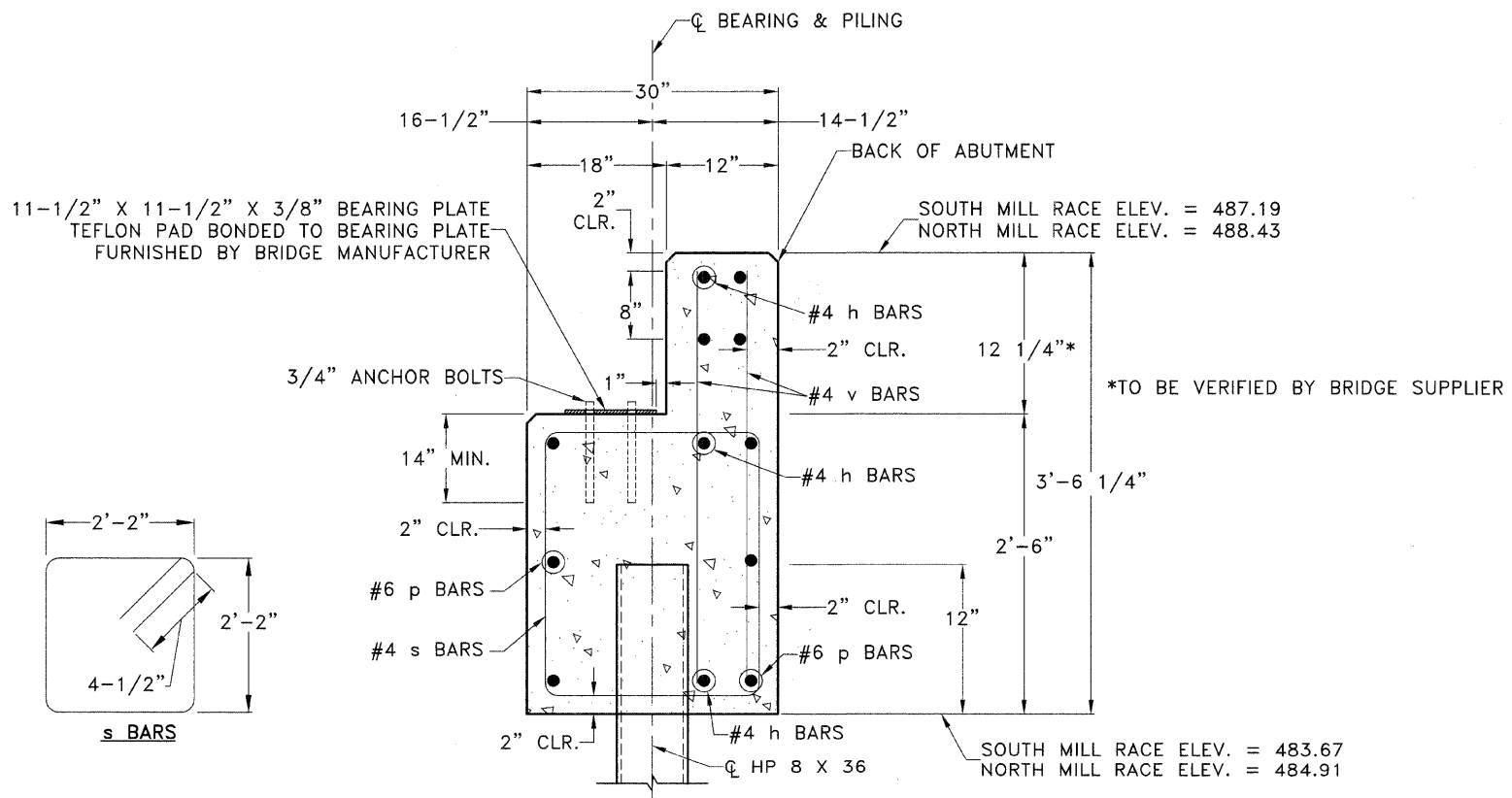
ABUTMENT - FRONT ELEVATION DETAIL
NOT TO SCALE

DESIGN STRESSES
 $f'_c = 50$ KSI (CONCRETE)
 $F_y = 60,000$ PSI (REINFORCEMENT)

SOUTH MILL RACE PILE DATA
NORTH ABUTMENT
 TYPE: HP 8X36
 CAPACITY: EAST PILING DRIVEN TO TOP OF EX. WING WALL FOOTING
 WEST PILING DRIVEN TO TOP OF BEDROCK
 ESTIMATED LENGTH: EAST=21' WEST=19'
 NUMBER REQUIRED: 2

SOUTH ABUTMENT
 TYPE: HP 8X36
 CAPACITY: PILING DRIVEN TO TOP OF EX. WINGWALL FOOTING
 ESTIMATED LENGTH: 19'
 NUMBER REQUIRED: 2

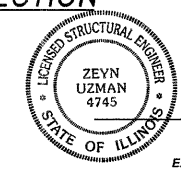
NORTH MILL RACE PILE DATA
EACH ABUTMENT
 TYPE: HP 8X36
 CAPACITY: PILING DRIVEN TO TOP OF BEDROCK
 ESTIMATED LENGTH: 20'
 TOTAL NUMBER REQUIRED: 2



ABUTMENT - CROSS SECTION
NOT TO SCALE

BILL OF MATERIAL				
EACH ABUTMENT - 4 REQUIRED				
BAR	NO.	SIZE	LENGTH	SHAPE
h	6	#4	9'-2"	—
p	6	#6	9'-0"	—
s	10	#4	9'-5"	□
v	20	#4	3'-4"	—
CONCRETE STRUCTURES			C.Y.	2.6
REINFORCEMENT BARS			POUND	230
FURNISHING HP 8X36 PILES			FOOT	*
DRIVING PILES			FOOT	*

*SEE PILE DATA TABLES FOR LENGTHS



DATE: 12/5/09
 ZEYN B. UZMAN
 S.E. NO. 081-004745
 EXPIRES NOVEMBER 30, 2010

1304 GEMINI CIRCLE
 OTTAWA, IL 61350-1692
 TEL: 815-434-3925
 FAX: 815-434-3933

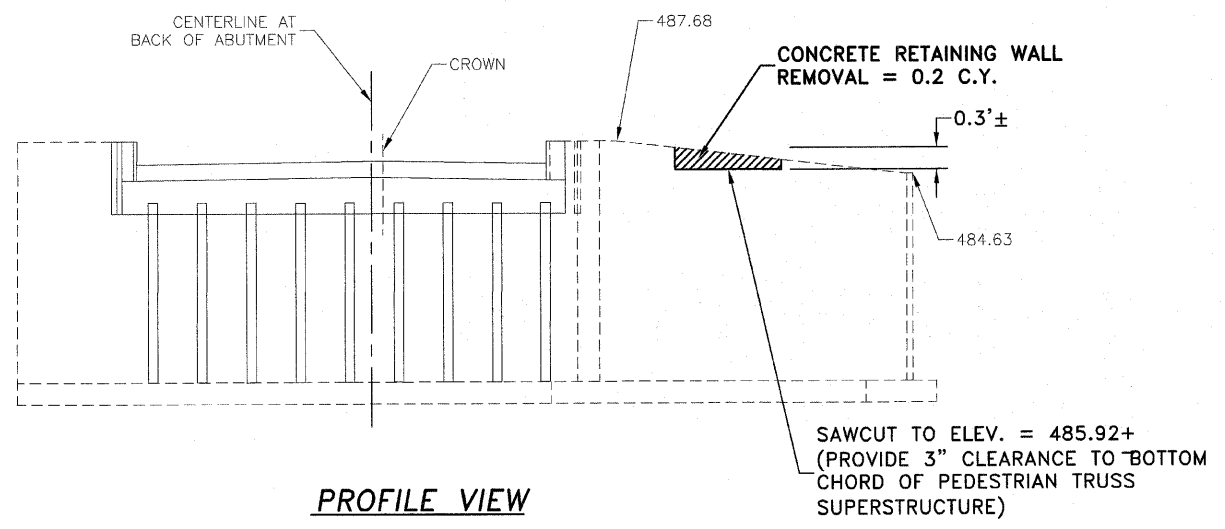
ETSCHIED DUTTLINGER & ASSOCIATES INC.
 Professional Engineers & Land Surveyors

PROFESSIONAL DESIGN
 FIRM # 184-000711
 DATE PLOTTED:
 OCTOBER 21, 2009
 DRAWN BY:
 R.M.S.
 CHECKED BY:
 PROJECT NUMBER:
 2057.92
 DRAWING FILE:
 J:\205792_ABUT.DWG

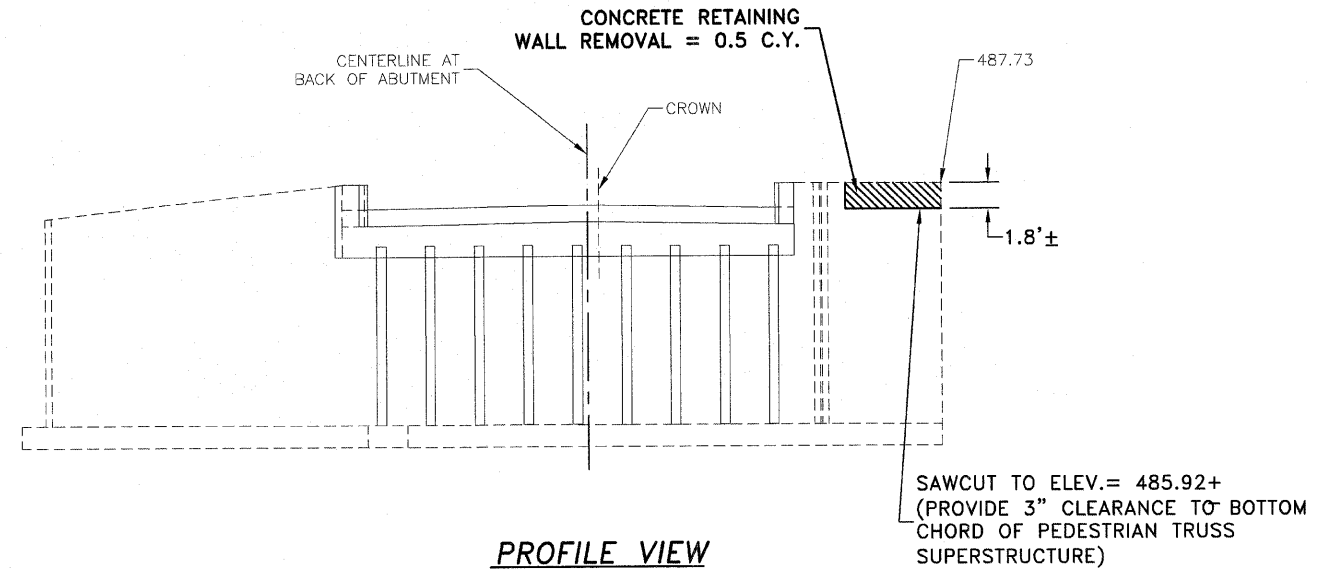
SHEET NO.
10 OF 15

F.A.S. ROUTE NO.	SECTION	ILLINOIS PROJECT	CONTRACT NO.	COUNTY	TOTAL SHEETS	SHEET NUMBER
268	06-00173-00-SW	TE-00D3(58)	87359	LASALLE	15	11

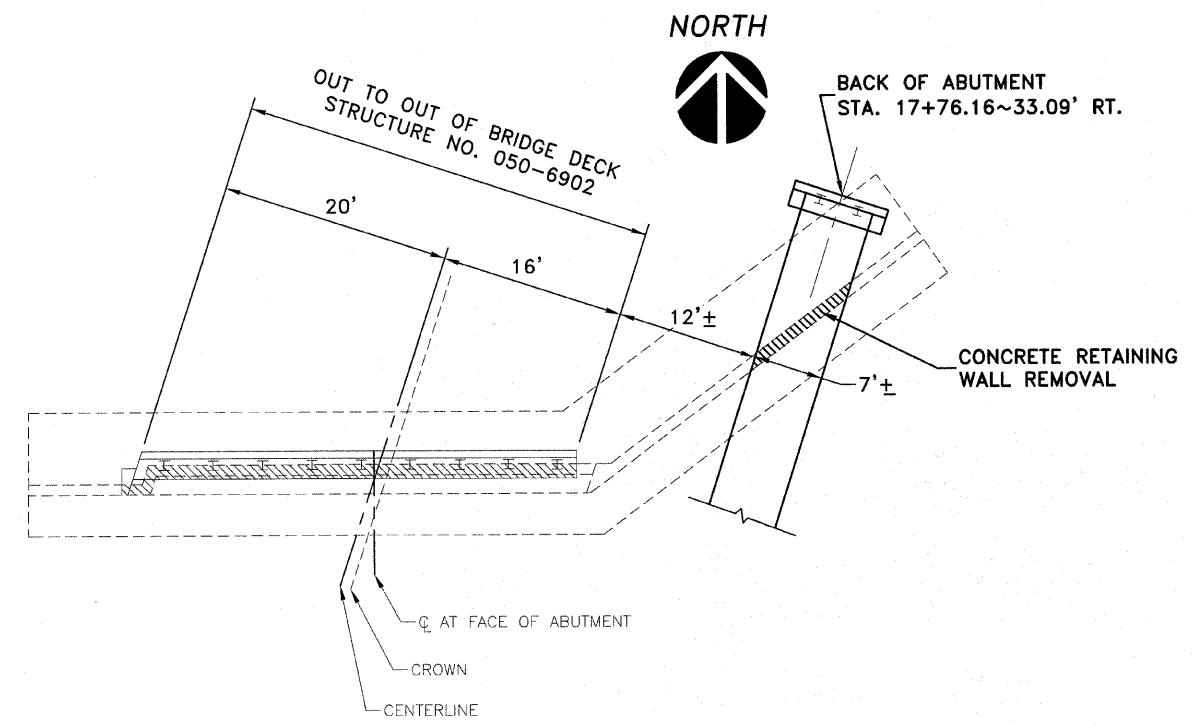
F.A.S. 268 - MAIN STREET
 SECTION 06-00173-00-SW
 CITY OF MARSEILLES, LASALLE COUNTY



PROFILE VIEW

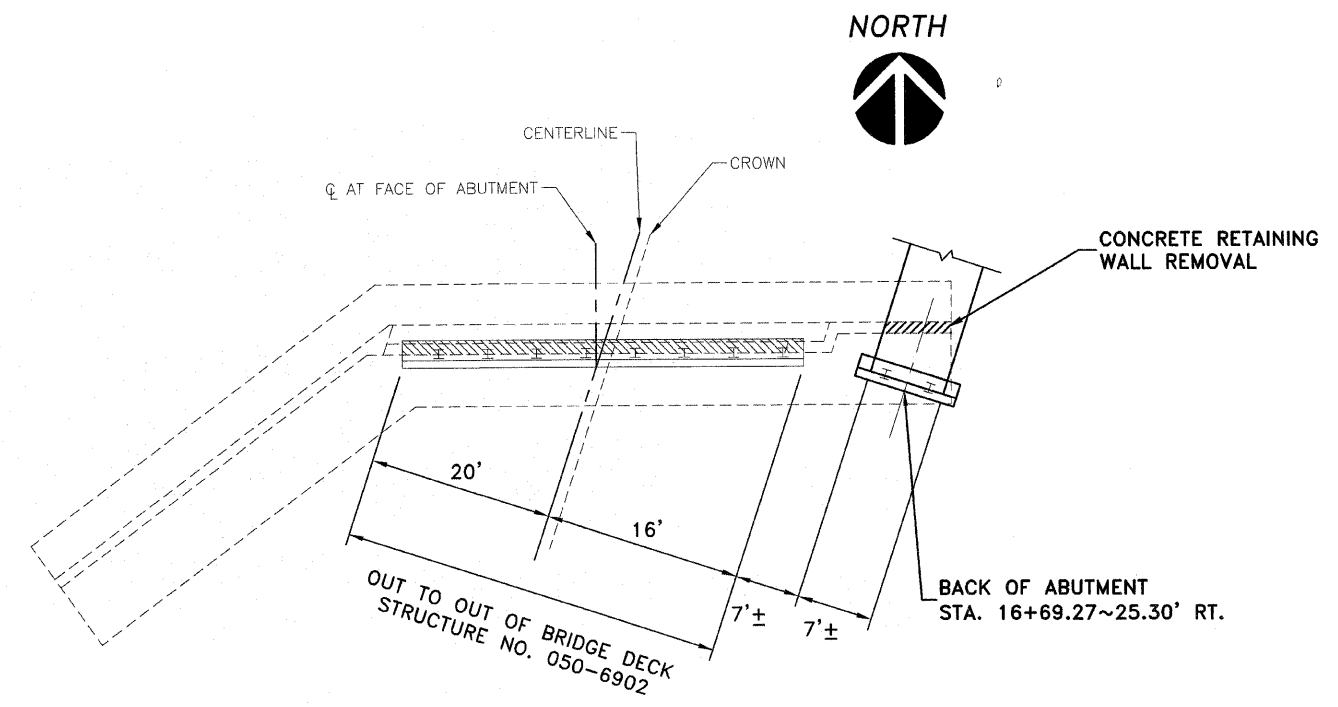


PROFILE VIEW



PLAN VIEW

NORTH ABUTMENT - SOUTH MILL RACE
NOT TO SCALE



PLAN VIEW

SOUTH ABUTMENT - SOUTH MILL RACE
NOT TO SCALE

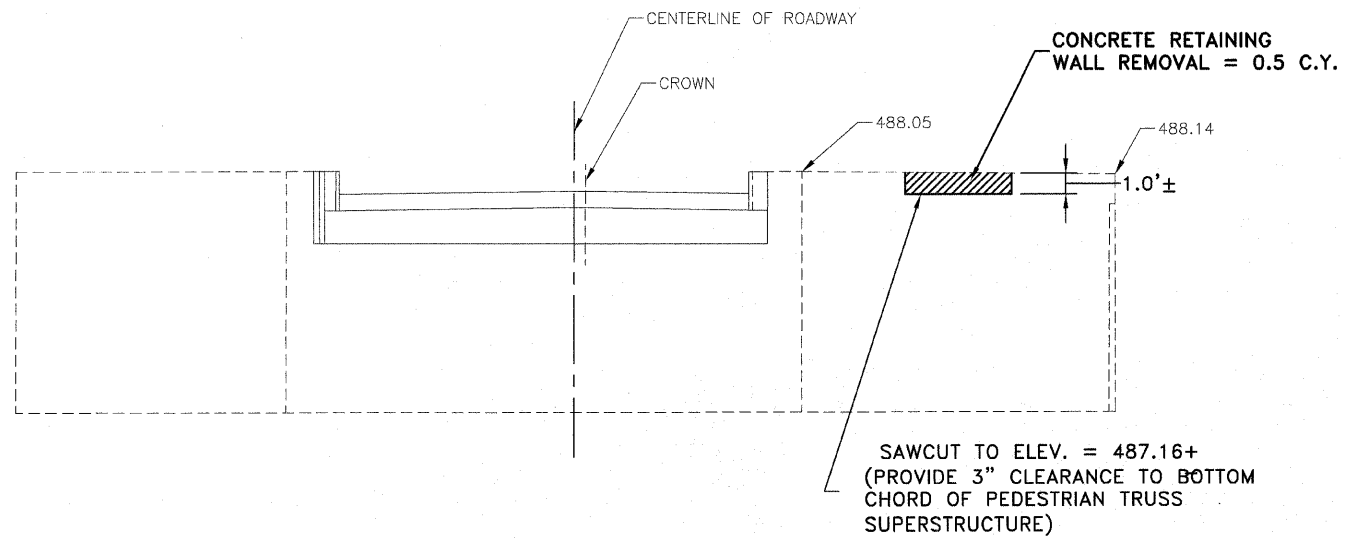
1304 GEMINI CIRCLE
 OTTAWA, IL 62356-7692
 TEL: 815-464-3925
 FAX: 815-464-3955

E TSCHIED
D UTTINGER
& ASSOCIATES INC.
 Professional Engineers & Land Surveyors

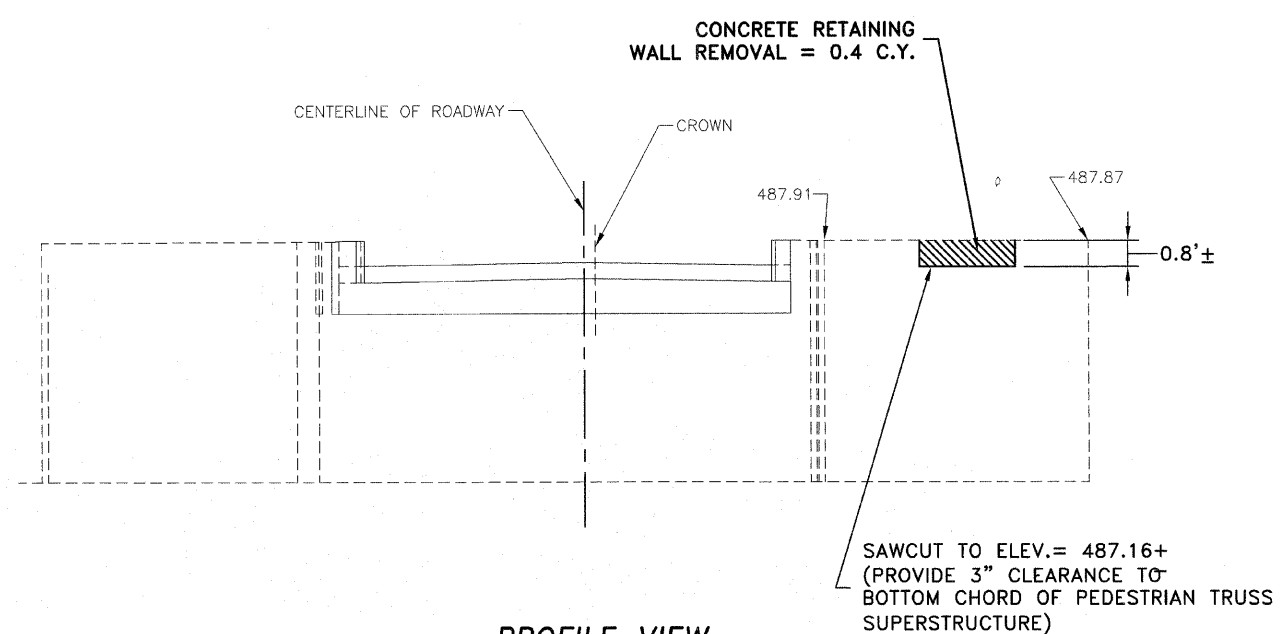
PROFESSIONAL DESIGN FIRM # 184-000711
DATE PLOTTED: OCTOBER 21, 2009
DRAWN BY: R.M.S.
CHECKED BY:
PROJECT NUMBER: 2057.92
DRAWING FILE: 205792_EXIST_WALL
SHEET NO.

F.A.S. ROUTE NO.	SECTION	ILLINOIS PROJECT	CONTRACT NO.	COUNTY	TOTAL SHEETS	SHEET NUMBER
268	06-00173-00-SW	TE-0003(58)	87359	LASALLE	15	12

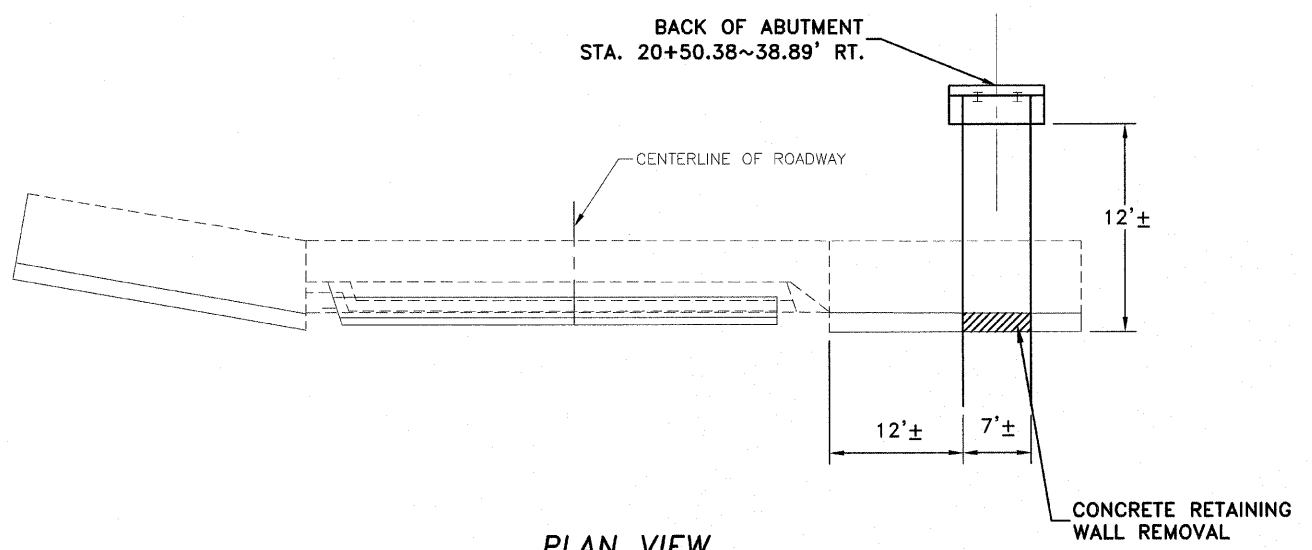
F.A.S. 268 - MAIN STREET
SECTION 06-00173-00-SW
CITY OF MARSEILLES, LASALLE COUNTY



PROFILE VIEW



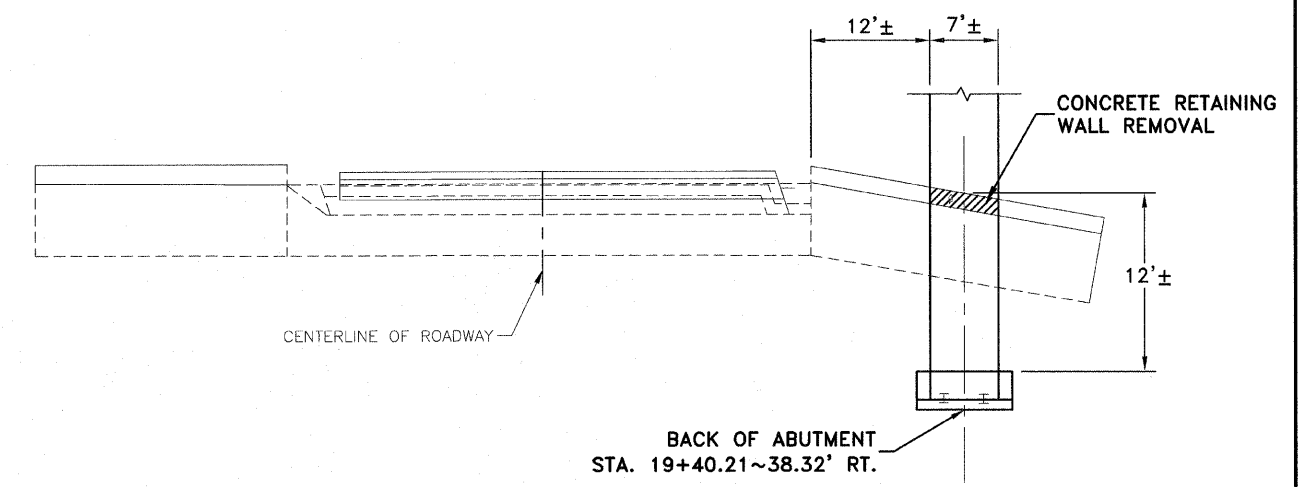
PROFILE VIEW



PLAN VIEW

NORTH ABUTMENT - NORTH MILL RACE

NOT TO SCALE



PLAN VIEW

SOUTH ABUTMENT - NORTH MILL RACE

NOT TO SCALE

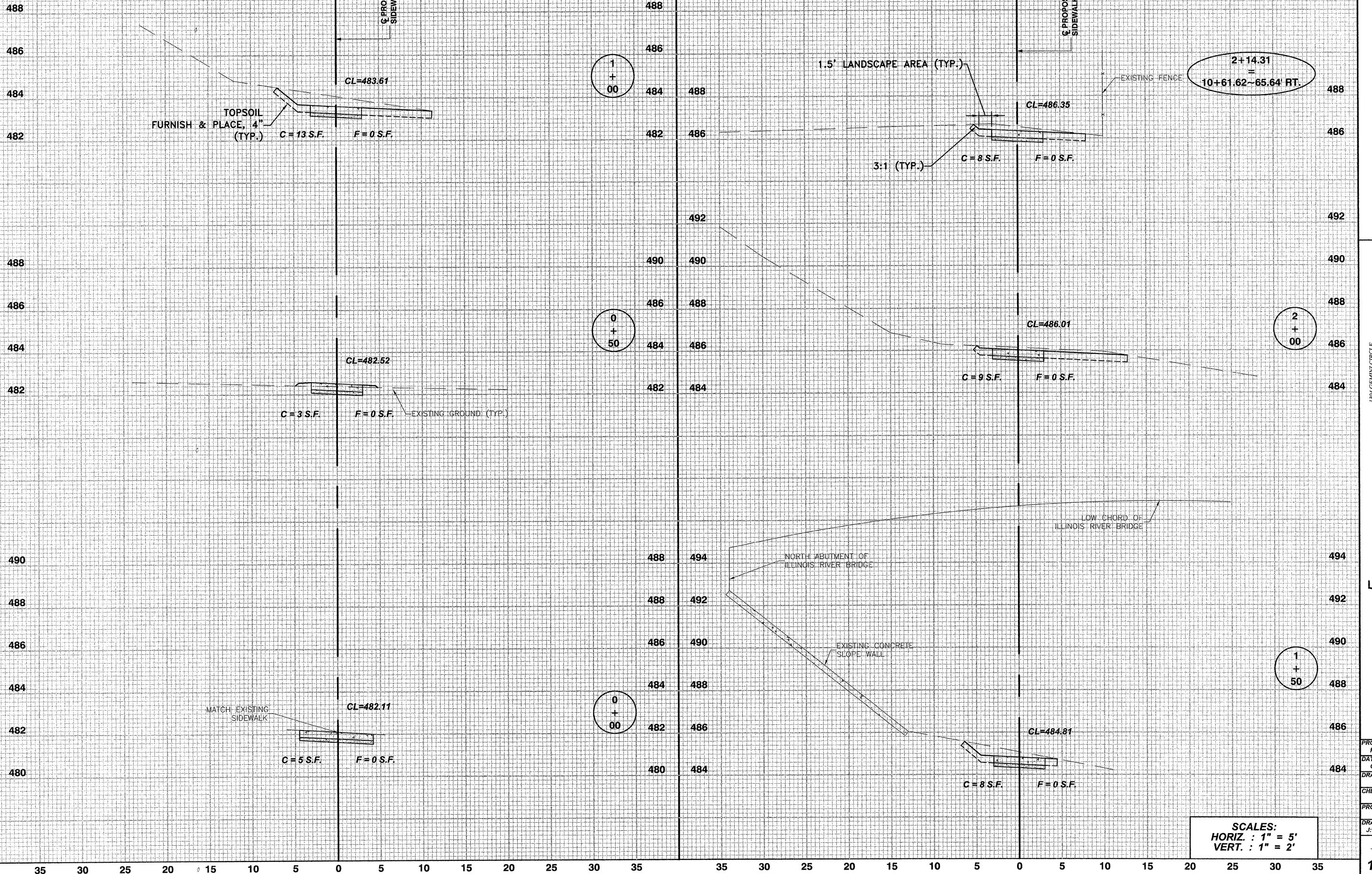
1304 GEMINI CIRCLE
 OTTAWA, IL 61350-1022
 TEL: 815-434-3925
 FAX: 815-434-3923



PROFESSIONAL DESIGN
 FIRM # 184-000711
 DATE PLOTTED:
 OCTOBER 21, 2009
 DRAWN BY:
 R.M.S.
 CHECKED BY:
 PROJECT NUMBER:
 2057.92
 DRAWING FILE:
 205792_EXIST_WALL

F.A.S. ROUTE NO.	SECTION	ILLINOIS PROJECT	CONTRACT NO.	COUNTY	TOTAL SHEETS	SHEET NUMBER
268	06-00173-00-SW		87359	LASALLE	15	13

F.A.S. 268 - MAIN STREET
SECTION 06-00173-00-SW
CITY OF MARSEILLES, LASALLE COUNTY



1304 GEMINI CIRCLE
 OTTAWA, IL 61350-1692
 TEL: 815-434-3925
 FAX: 815-434-3933

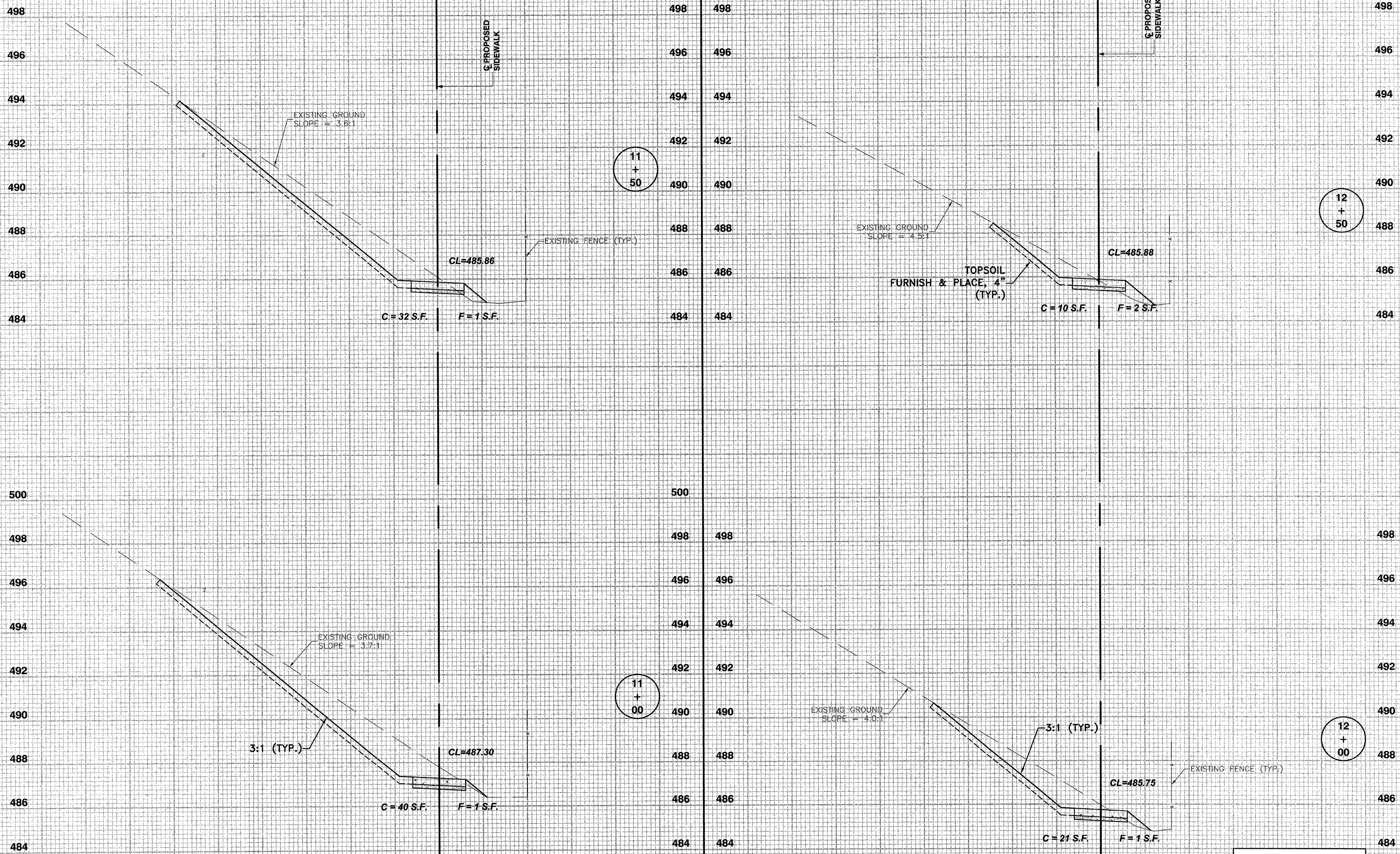
E. TSCHIED
DUTTLINGER & ASSOCIATES INC.
 Professional Engineers & Land Surveyors

PROFESSIONAL DESIGN
 FIRM # 184-000711
 DATE PLOTTED:
 OCTOBER 21, 2009
 DRAWN BY:
 R.M.S.
 CHECKED BY:
 PROJECT NUMBER:
 2057.92
 DRAWING FILE:
 J:\205792_XSEC.DWG

SCALES:
 HORIZ. : 1" = 5'
 VERT. : 1" = 2'

SIDEWALK CROSS SECTIONS ~ 0+00 (SW) TO 2+14 = 10+61

F.A.S. ROUTE NO.	SECTION	ILLINOIS PROJECT	CONTRACT NO.	COUNTY	TOTAL SHEETS	SHEET NUMBER
268	06-00173-00-SW		87359	LASALLE	15	14



11
+
50

12
+
50

11
+
00

12
+
00

SCALES:
HORIZ. : 1" = 5'
VERT. : 1" = 2'

F.A.S. 268 - MAIN STREET
SECTION 06-00173-00-SW
CITY OF MARSEILLES, LASALLE COUNTY

1844 CEMENT CIRCLE
OTTAWA, IL 61504-6822
TEL: 815-634-9925
FAX: 815-634-9933

E TSCHIED
DUTTLINGER
& ASSOCIATES INC.
Professional Engineers & Land Surveyors

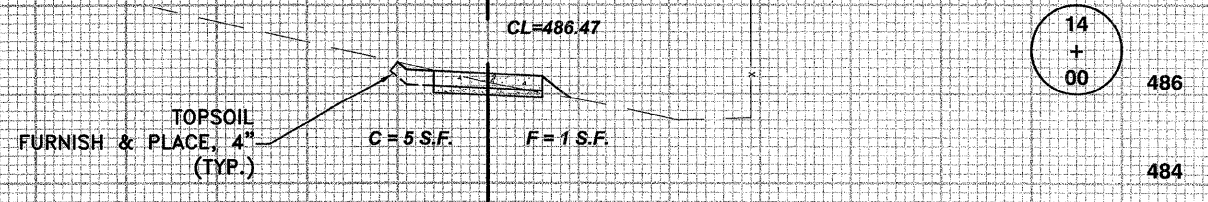
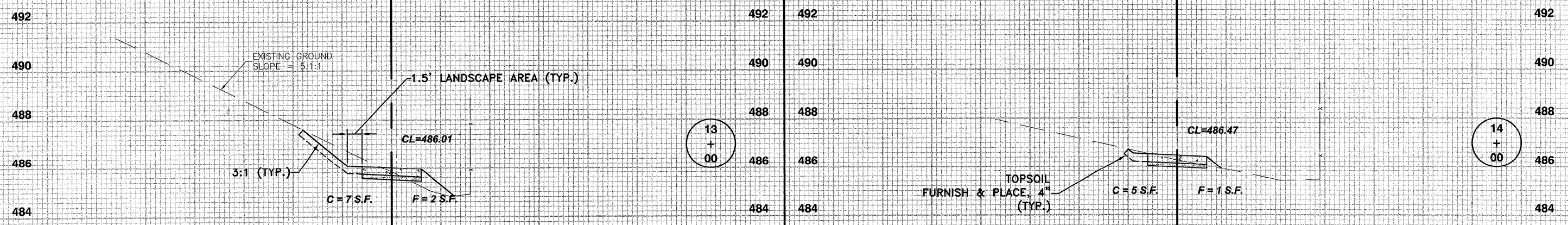
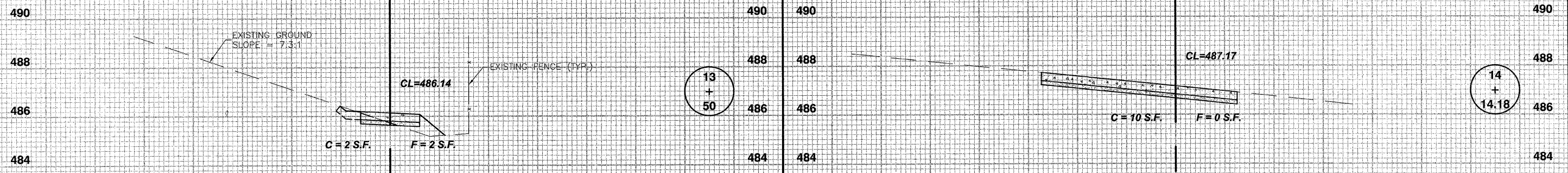
PROFESSIONAL DESIGN FIRM # 184-000711
DATE PLOTTED: OCTOBER 21, 2009
DRAWN BY: R.M.S.
CHECKED BY:
PROJECT NUMBER: 2057.92
DRAWING FILE: J:\205792_XSEC.DWG
SHEET NO.

35 30 25 20 15 10 5 0 5 10 15 20 25 30 35

35 30 25 20 15 10 5 0 5 10 15 20 25

F.A.S. ROUTE NO.	SECTION	ILLINOIS PROJECT	CONTRACT NO.	COUNTY	TOTAL SHEETS	SHEET NUMBER
268	06-00173-00-SW		87359	LASALLE	15	15

F.A.S. 268 - MAIN STREET
SECTION 06-00173-00-SW
CITY OF MARSEILLES, LASALLE COUNTY



35 30 25 20 15 10 5 0 5 10 15 20 25 30 35

35 30 25 20 15 10 5 0 5 10 15 20 25

SCALES:
HORIZ. : 1" = 5'
VERT. : 1" = 2'

1304 GEMINI CIRCLE
O'LEARY, IL 62454
TEL: 618-644-3925
FAX: 618-644-3933

E. TSCHIED
D. DUTTLINGER
& ASSOCIATES INC.
Professional Engineers & Land Surveyors

PROFESSIONAL DESIGN FIRM # 104-000711
DATE PLOTTED: OCTOBER 21, 2009
DRAWN BY: R.M.S.
CHECKED BY:
PROJECT NUMBER: 2057.02
DRAWING FILE: J:\205792_XSEC.DWG

SHEET NO.
15 OF 15

SIDEWALK CROSS SECTIONS ~ 13+00 TO 14+14.18