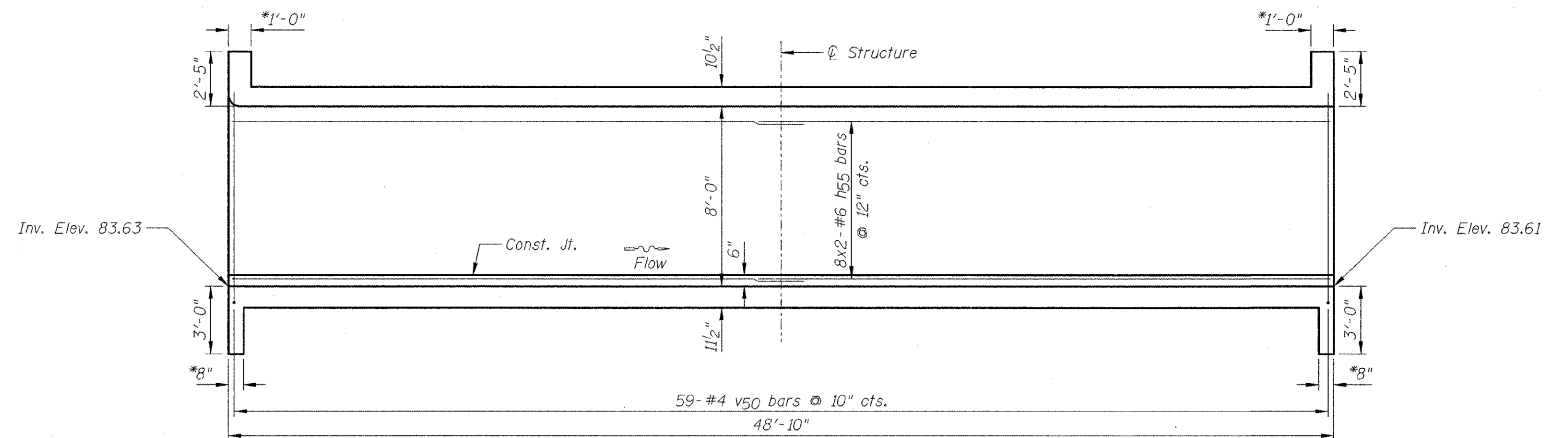
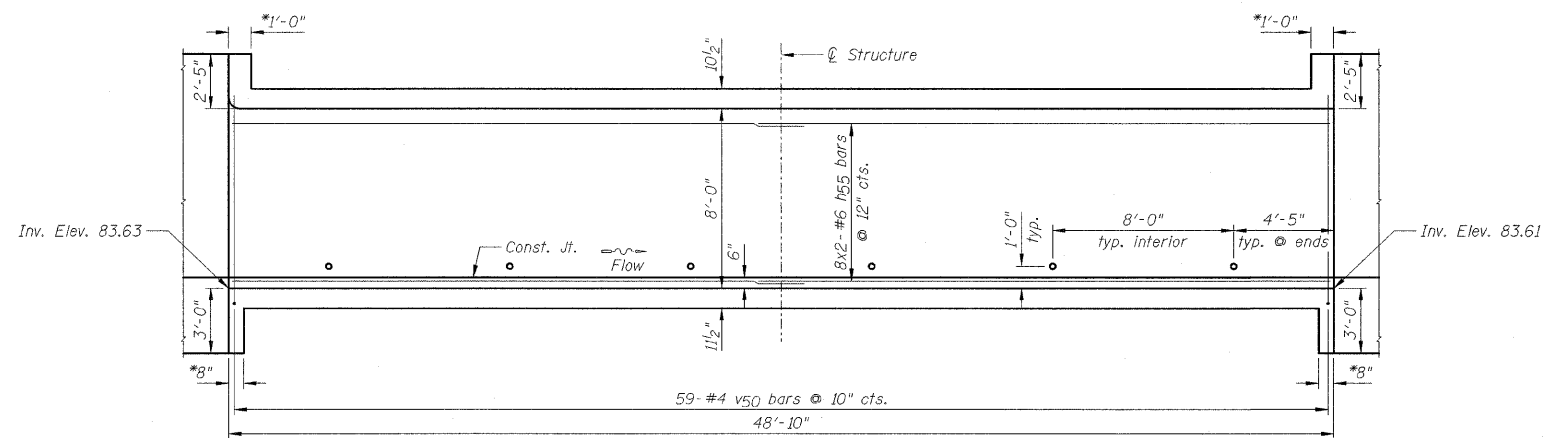


VIEW B-B



VIEW C-C



VIEW D-D

**NOTES:**

- 1.) For Bill of Material, see Sheet B2.
- 2.) For bar lap length, see the General Notes on Sheet B2.
- 3.) \*Denotes horizontal dimension at right angle to roadway.
- 4.) For location View B-B thru View D-D, see Sheet B3.

DESIGNED - JML	REVISED -
DRAWN - DJM	REVISED -
CHECKED - MSW	REVISED -
DATE - 10/21/09	REVISED -

LIVINGSTON COUNTY DEPARTMENT OF HIGHWAYS

CULVERT WALL ELEVATIONS

WESTON ROAD (C.H. 10) OVER HICKORY CREEK  
SECTION 09-00120-03-BR  
LIVINGSTON, COUNTY  
STATION 115+00.00

F.A.S.	SECTION	COUNTY	TOTAL SHEETS	SHEET NO.
349	09-00120-03-BR	LIVINGSTON	34	26
S.N. 053-5015		CONTRACT NO. 87412		
FED. ROAD DIST. NO.		[ILLINOIS] FED. AID PROJECT		