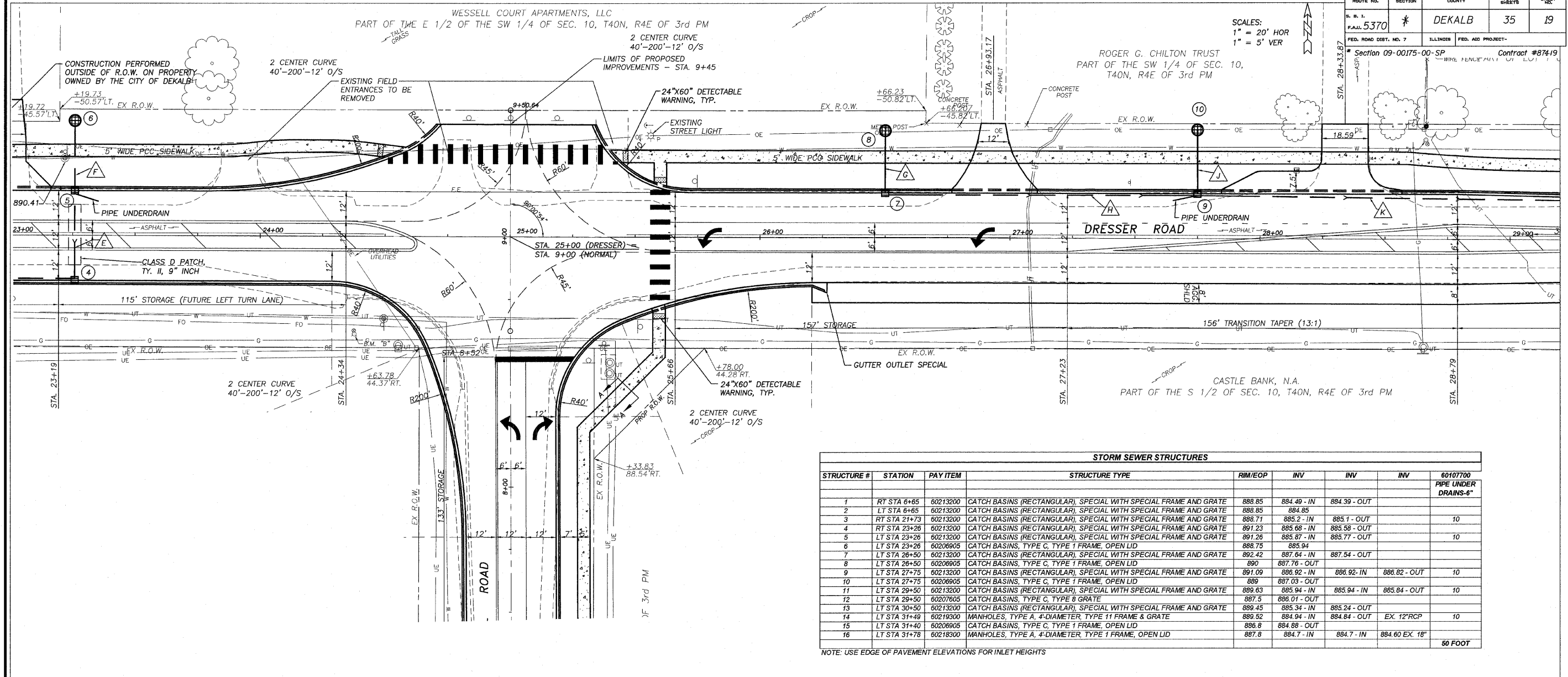
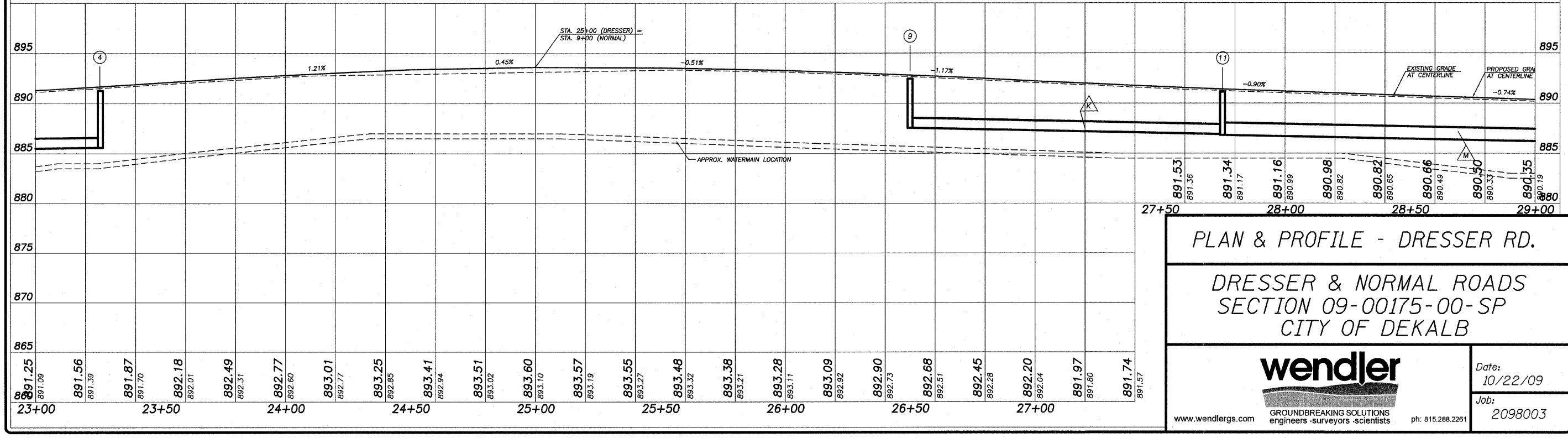


SCALES:  
1" = 20' HOR  
1" = 5' VER



STORM SEWER STRUCTURES							
STRUCTURE #	STATION	PAY ITEM	STRUCTURE TYPE	RIM/EOP	INV	INV	INV
1	RT STA 6+65	60213200	CATCH BASINS (RECTANGULAR), SPECIAL WITH SPECIAL FRAME AND GRATE	888.85	884.49 - IN	884.39 - OUT	
2	LT STA 6+65	60213200	CATCH BASINS (RECTANGULAR), SPECIAL WITH SPECIAL FRAME AND GRATE	888.85	884.85		
3	RT STA 21+73	60213200	CATCH BASINS (RECTANGULAR), SPECIAL WITH SPECIAL FRAME AND GRATE	888.71	885.2 - IN	885.1 - OUT	10
4	RT STA 23+26	60213200	CATCH BASINS (RECTANGULAR), SPECIAL WITH SPECIAL FRAME AND GRATE	891.23	885.68 - IN	885.58 - OUT	
5	LT STA 23+26	60213200	CATCH BASINS (RECTANGULAR), SPECIAL WITH SPECIAL FRAME AND GRATE	891.26	885.87 - IN	885.77 - OUT	10
6	LT STA 23+26	60206905	CATCH BASINS, TYPE C, TYPE 1 FRAME, OPEN LID	888.75	885.94		
7	LT STA 26+50	60213200	CATCH BASINS (RECTANGULAR), SPECIAL WITH SPECIAL FRAME AND GRATE	892.42	887.64 - IN	887.54 - OUT	
8	LT STA 26+50	60206905	CATCH BASINS, TYPE C, TYPE 1 FRAME, OPEN LID	890	887.76 - OUT		
9	LT STA 27+75	60213200	CATCH BASINS (RECTANGULAR), SPECIAL WITH SPECIAL FRAME AND GRATE	891.09	886.92 - IN	886.82 - OUT	10
10	LT STA 27+75	60206905	CATCH BASINS, TYPE C, TYPE 1 FRAME, OPEN LID	889	887.03 - OUT		
11	LT STA 29+50	60213200	CATCH BASINS (RECTANGULAR), SPECIAL WITH SPECIAL FRAME AND GRATE	889.63	885.94 - IN	885.84 - OUT	10
12	LT STA 29+50	60207605	CATCH BASINS, TYPE C, TYPE 8 GRATE	887.5	886.01 - OUT		
13	LT STA 30+50	60213200	CATCH BASINS (RECTANGULAR), SPECIAL WITH SPECIAL FRAME AND GRATE	889.45	885.34 - IN	885.24 - OUT	
14	LT STA 31+49	60219300	MANHOLES, TYPE A, 4'-DIAMETER, TYPE 11 FRAME & GRATE	889.52	884.94 - IN	884.84 - OUT	EX. 12"RCP 10
15	LT STA 31+40	60206905	CATCH BASINS, TYPE C, TYPE 1 FRAME, OPEN LID	886.8	884.88 - OUT		
16	LT STA 31+78	60218300	MANHOLES, TYPE A, 4'-DIAMETER, TYPE 1 FRAME, OPEN LID	887.8	884.7 - IN	884.60 EX. 18"	

NOTE: USE EDGE OF PAVEMENT ELEVATIONS FOR INLET HEIGHTS



PLAN & PROFILE - DRESSER RD.

DRESSER & NORMAL ROADS  
SECTION 09-00175-00-SP  
CITY OF DEKALB

www.wendlergs.com GROUND BREAKING SOLUTIONS engineers - surveyors - scientists ph: 815.288.2261

Date: 10/22/09  
Job: 2098003