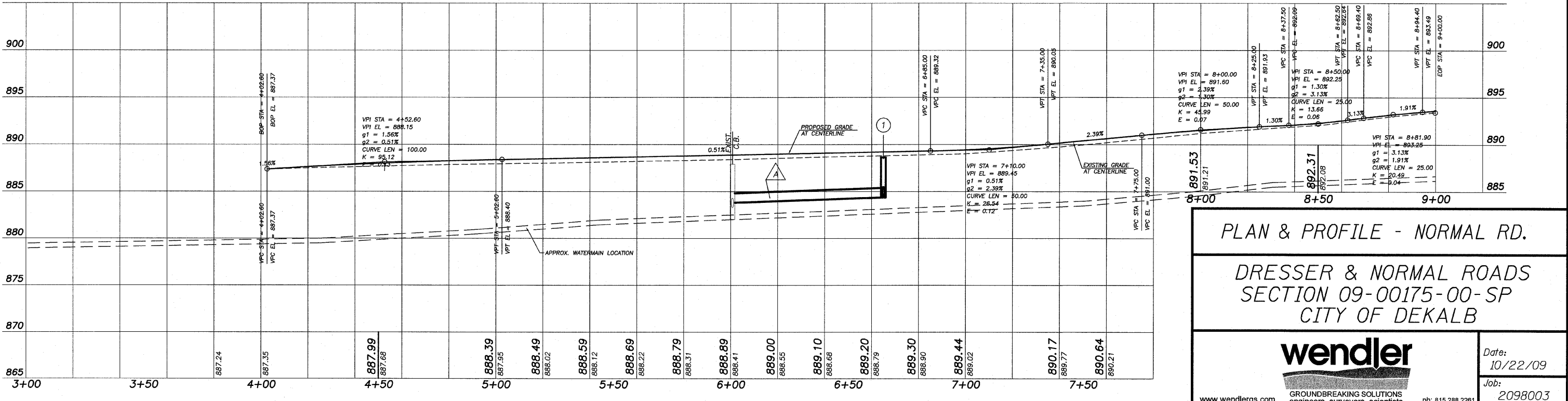


STATION	PAY ITEM	STRUCTURE TYPE	EXIT. RIM	PROP. RIM
RT. STA. 6+00	60250200	CATCH BASIN ADJUST	887.94	888.6
STATION	PAY ITEM	DESCRIPTION	UNIT	QUANTITY
LT. STA. 31+78	60500080	REMOVING C.B. TO MAINTAIN FLOW	EACH	1

STRUCTURE #	STATION	PAY ITEM	STRUCTURE TYPE	RIM/EOP	INV	INV	INV	60107700
1	RT STA 6+65	60213200	CATCH BASINS (RECTANGULAR), SPECIAL WITH SPECIAL FRAME AND GRATE	888.85	884.40 - IN	884.39 - OUT		PIPE UNDER DRAINS-6"
2	LT STA 6+65	60213200	CATCH BASINS (RECTANGULAR), SPECIAL WITH SPECIAL FRAME AND GRATE	888.85	884.85			
3	RT STA 21+73	60213200	CATCH BASINS (RECTANGULAR), SPECIAL WITH SPECIAL FRAME AND GRATE	888.71	885.2 - IN	885.1 - OUT		10
4	RT STA 23+26	60213200	CATCH BASINS (RECTANGULAR), SPECIAL WITH SPECIAL FRAME AND GRATE	891.23	885.68 - IN	885.58 - OUT		
5	LT STA 23+26	60213200	CATCH BASINS (RECTANGULAR), SPECIAL WITH SPECIAL FRAME AND GRATE	891.26	885.87 - IN	885.77 - OUT		10
6	LT STA 23+26	60206905	CATCH BASINS, TYPE C, TYPE 1 FRAME, OPEN LID	888.75	885.94			
7	LT STA 26+50	60213200	CATCH BASINS (RECTANGULAR), SPECIAL WITH SPECIAL FRAME AND GRATE	892.42	887.64 - IN	887.54 - OUT		
8	LT STA 26+50	60206905	CATCH BASINS, TYPE C, TYPE 1 FRAME, OPEN LID	890	887.76 - OUT			
9	LT STA 27+75	60213200	CATCH BASINS (RECTANGULAR), SPECIAL WITH SPECIAL FRAME AND GRATE	891.09	886.92 - IN	886.92 - IN	886.82 - OUT	10
10	LT STA 27+75	60206905	CATCH BASINS, TYPE C, TYPE 1 FRAME, OPEN LID	889	887.03 - OUT			
11	LT STA 29+50	60213200	CATCH BASINS (RECTANGULAR), SPECIAL WITH SPECIAL FRAME AND GRATE	889.63	885.94 - IN	885.94 - IN	885.84 - OUT	10
12	LT STA 29+50	60207605	CATCH BASINS, TYPE C, TYPE 8 GRATE	887.5	886.01 - OUT			
13	LT STA 30+50	60213200	CATCH BASINS (RECTANGULAR), SPECIAL WITH SPECIAL FRAME AND GRATE	889.45	885.34 - IN	885.24 - OUT		
14	LT STA 31+49	60219300	MANHOLES, TYPE A, 4'-DIAMETER, TYPE 11 FRAME & GRATE	889.52	884.94 - IN	884.84 - OUT	EX. 12"RCP	10
15	LT STA 31+40	60206905	CATCH BASINS, TYPE C, TYPE 1 FRAME, OPEN LID	886.8	884.88 - OUT			
16	LT STA 31+78	60218300	MANHOLES, TYPE A, 4'-DIAMETER, TYPE 1 FRAME, OPEN LID	887.8	884.7 - IN	884.7 - IN	884.60 EX. 18"	

NOTE: USE EDGE OF PAVEMENT ELEVATIONS FOR INLET HEIGHTS

NUMBER	LOCATION	PAY ITEM #	PAY ITEM NAME	LENGTH	SIZE (INCH)	PERCENT SLOPE	TRENCH BACKFILL	AVERAGE DEPTH
A	RT STA 6+00 to RT STA 6+65	55021600	STORM SEWERS, TYPE 2 REINFORCED CONCRETE CULVERT, STORM DRAIN, AND SEWER PIPE, CLASS III 12"	65	12	0.88%	15	2.8
B	LT STA 6+65 to RT STA 6+65	55021600	STORM SEWERS, TYPE 2 REINFORCED CONCRETE CULVERT, STORM DRAIN, AND SEWER PIPE, CLASS III 12"	36	12	1.00%	8	2.6
C	RT STA 21+73 to RT STA 21+38	55019500	STORM SEWERS, TYPE 1, REINFORCED CONCRETE CULVERT, STORM DRAIN, AND SEWER PIPE, CLASS IV 12"	32	12	0.25%	2	2
D	RT STA 21+38 to RT STA 23+26	550A2520	STORM SEWERS, RUBBER GASKET, CLASS A, TYPE 2 12"	152	12	0.25%	37	3
E	RT STA 23+26 to LT STA 23+26	55021600	STORM SEWERS, TYPE 2 REINFORCED CONCRETE CULVERT, STORM DRAIN, AND SEWER PIPE, CLASS III 12"	36	12	0.25%	13	3.9
F	LT STA 23+26 to LT STA 23+26	550A2520	STORM SEWERS, RUBBER GASKET, CLASS A, TYPE 2 12"	28	12	0.25%	3	3.6
G	LT STA 26+50 to LT STA 26+50	550A2320	STORM SEWERS, RUBBER GASKET, CLASS A, TYPE 1 12"	24	12	0.50%	3	3.5
H	LT STA 26+50 to LT STA 27+75	55021600	STORM SEWERS, TYPE 2 REINFORCED CONCRETE CULVERT, STORM DRAIN, AND SEWER PIPE, CLASS III 12"	125	12	0.50%	66	4.5
J	LT STA 27+75 to LT STA 27+75	550A2320	STORM SEWERS, RUBBER GASKET, CLASS A, TYPE 1 12"	22	12	0.50%	2	2.2
K	LT STA 27+75 to LT STA 29+50	55019500	STORM SEWERS, TYPE 1, REINFORCED CONCRETE CULVERT, STORM DRAIN, AND SEWER PIPE, CLASS IV 12"	175	12	0.50%	31	2.4
L	LT STA 29+50 to LT STA 29+50	550A2320	STORM SEWERS, RUBBER GASKET, CLASS A, TYPE 1 12"	26	12	0.25%	1	2.1
M	LT STA 29+50 to LT STA 30+50	55019600	STORM SEWERS, TYPE 1 REINFORCED CONCRETE CULVERT, STORM DRAIN, AND SEWER PIPE, CLASS IV 15"	100	15	0.60%	18	2.4
N	LT STA 30+50 to LT STA 31+49	55021700	STORM SEWERS, TYPE 2 REINFORCED CONCRETE CULVERT, STORM DRAIN, AND SEWER PIPE, CLASS III 15"	99	15	0.30%	22	2.8
O	LT STA 31+49 to LT STA 31+78	550A2340	STORM SEWERS, RUBBER GASKET, CLASS A, TYPE 1 18"	41	18	0.35%	5	4.4
P	LT STA 31+40 to LT STA 31+78	550A2320	STORM SEWERS, RUBBER GASKET, CLASS A, TYPE 1 12"	36	12	0.50%	0	0
				<b>226</b>				



PLAN & PROFILE - NORMAL RD.

DRESSER & NORMAL ROADS  
SECTION 09-00175-00-SP  
CITY OF DEKALB

**wendler**  
GROUND BREAKING SOLUTIONS  
engineers - surveyors - scientists  
www.wendlergs.com ph: 815.288.2261

Date: 10/22/09  
Job: 2098003