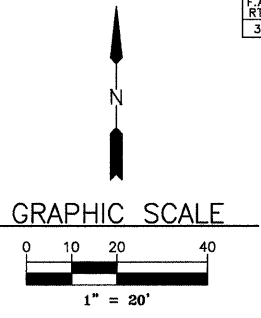


**LEGEND**

- |   |  |
|---|--|
| <ul style="list-style-type: none"> <li>☼-○-☼ PROPOSED ORNAMENTAL LIGHTING UNIT COMPLETE</li> <li>☼ EXISTING LIGHT</li> <li>□ EXISTING BURIED WIRING JUNCTION BOX</li> <li>○ EXISTING CATCH BASIN</li> <li>○ EXISTING UTILITY POLE</li> <li>○ EXISTING INLET</li> <li>○ EXISTING MANHOLE</li> <li>—G— EXISTING GAS</li> <li>—W— EXISTING WATER</li> <li>A DECORATIVE LIGHT TYPE A</li> <li>B DECORATIVE LIGHT TYPE B</li> <li>C DECORATIVE LIGHT TYPE C</li> </ul> | <ul style="list-style-type: none"> <li>—T— EXISTING TELEPHONE</li> <li>—E— EXISTING ELECTRICAL</li> <li>—G— EXISTING GAS</li> <li>—OE— EXISTING OVERHEAD ELECTRICAL</li> <li>— EXISTING R.O.W.</li> <li>— EXISTING PIPE CULVERT</li> <li>— EXISTING STORMSEWER</li> <li>— EXISTING SANITARY SEWER</li> </ul> |
|---|--|

\* REMOVAL OF LUMINAIRE, SALVAGE & LUMINAIRE, HIGH PRESSURE SODIUM SPECIAL (310 WATT)



LIGHT NO. 1  
(EXISTING)  
STA. 107+95  
21' LT.

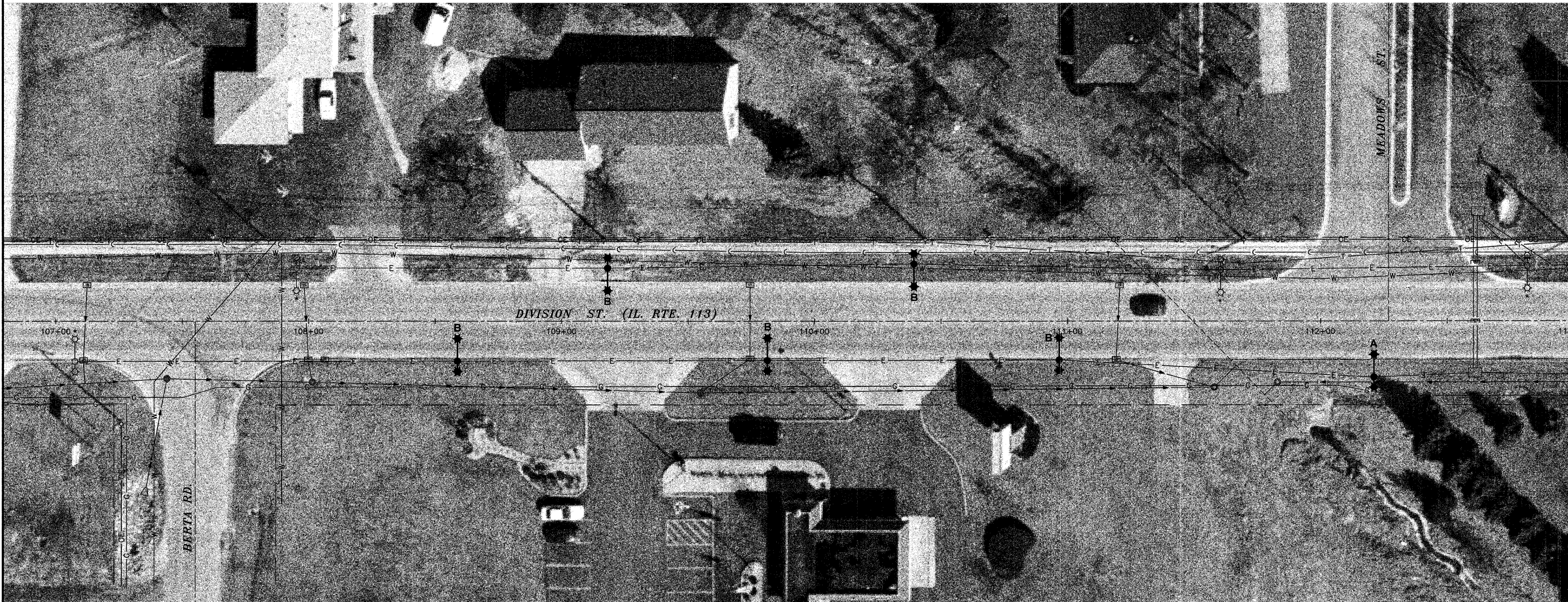
LIGHT NO. 2  
(PROPOSED)  
STA. 109+18  
21' LT.

LIGHT NO. 3  
(PROPOSED)  
STA. 110+39  
23' LT.

LIGHT NO. 4  
(EXISTING)  
STA. 111+61  
20' LT.

LIGHTING CONTROL PANEL NO. 1  
CONTROLS LIGHTS 1-5, 6-11,  
39-42 AND 43-48

LIGHT NO. 5  
(PROPOSED)  
STA. 112+82  
22' LT.



MATCH LINE - STA. 113+00

LIGHT NO. 39A  
(EXISTING)  
STA. 107+08  
16' RT.

LIGHT NO. 39  
(PROPOSED)  
STA. 108+59  
16' RT.

LIGHT NO. 40  
(PROPOSED)  
STA. 109+81  
16' RT.

LIGHT NO. 41  
(PROPOSED)  
STA. 110+97  
15' RT.

LIGHT NO. 42  
(PROPOSED)  
STA. 112+21  
22' RT.

NOTE: AERIAL PHOTOGRAPHS SUPPLIED BY THE SIDWELL COMPANY

DRAWN BY: RGP/JMT	6978-00 CAD/DWG: P107-113 BASE	REVISIONS
CHECKED BY: MWP/DJD	DATE: 09-24-09	DATE BY



PERU MORRIS  
ILLINOIS

**VILLAGE OF DIAMOND  
DIVISION STREET LIGHTING IMPROVEMENTS - 2010**

**PLAN SHEET - STA. 107+00 TO STA. 113+00**

SCALE: AS NOTED	SHEET 4
FILE NO.: 6978-00	OF 12