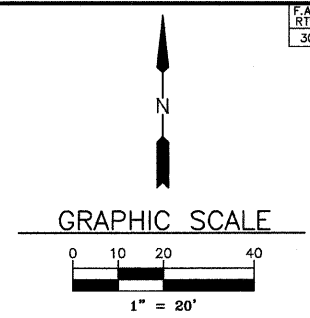


### LEGEND

- |   |  |
|---|--|
| <ul style="list-style-type: none"> <li>☼-○-☼ PROPOSED ORNAMENTAL LIGHTING UNIT COMPLETE</li> <li>☼-○-☼ EXISTING LIGHT</li> <li>□ EXISTING BURIED WIRING JUNCTION BOX</li> <li>○ EXISTING CATCH BASIN</li> <li>○ EXISTING UTILITY POLE</li> <li>□ EXISTING INLET</li> <li>○ EXISTING MANHOLE</li> <li>G EXISTING GAS</li> <li>W EXISTING WATER</li> <li>A DECORATIVE LIGHT TYPE A</li> <li>B DECORATIVE LIGHT TYPE B</li> <li>C DECORATIVE LIGHT TYPE C</li> </ul> | <ul style="list-style-type: none"> <li>T EXISTING TELEPHONE</li> <li>E EXISTING ELECTRICAL</li> <li>G EXISTING GAS</li> <li>OE EXISTING OVERHEAD ELECTRICAL</li> <li>— EXISTING R.O.W.</li> <li>— EXISTING PIPE CULVERT</li> <li>— EXISTING STORMSEWER</li> <li>— EXISTING SANITARY SEWER</li> </ul> |
|---|--|
- \* REMOVAL OF LUMINAIRE, SALVAGE & LUMINAIRE, HIGH PRESSURE SODIUM SPECIAL (310 WATT)

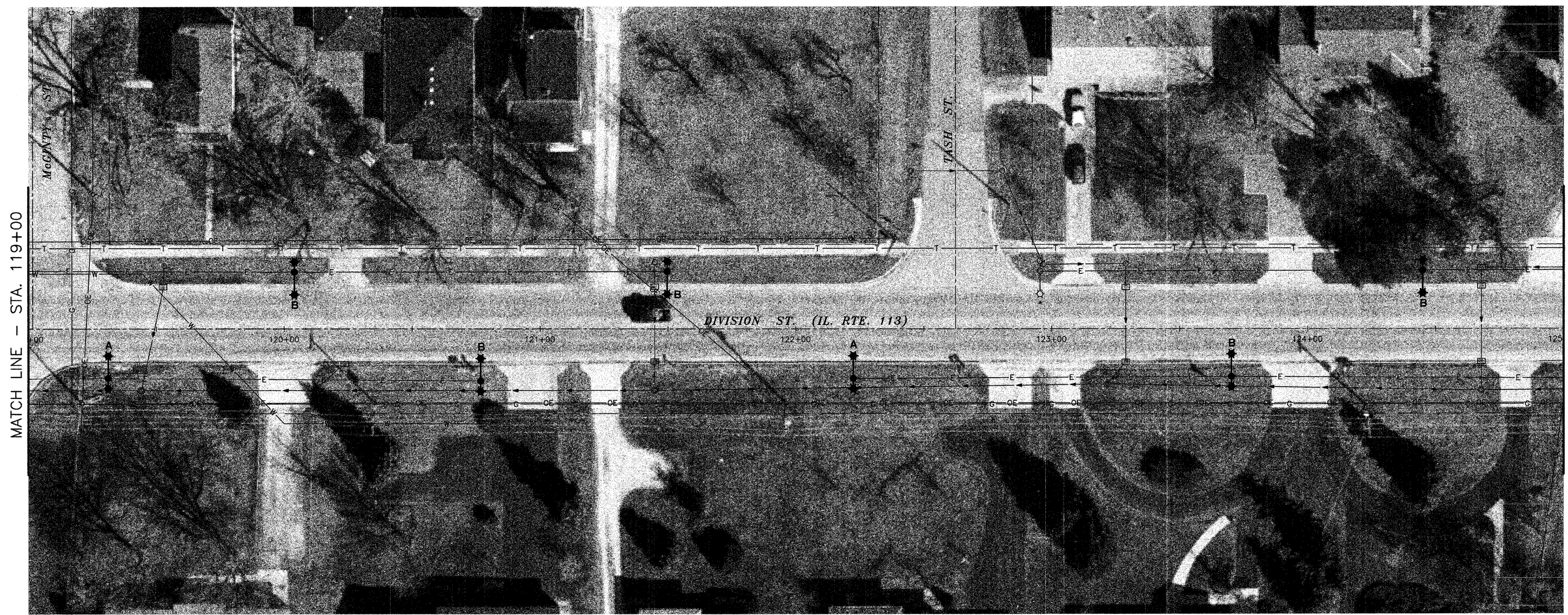


LIGHT NO. 10  
(PROPOSED)  
STA. 120+04  
22' LT.

LIGHT NO. 11  
(PROPOSED)  
STA. 121+50  
23' LT.

LIGHT NO. 12  
(EXISTING)  
STA. 122+95  
23' LT.

LIGHT NO. 13  
(PROPOSED)  
STA. 124+45  
23' LT.



MATCH LINE - STA. 119+00

MATCH LINE - STA. 125+00

LIGHT NO. 47  
(PROPOSED)  
STA. 119+31  
19' RT.

LIGHT NO. 48  
(PROPOSED)  
STA. 120+77  
20' RT.

LIGHT NO. 49  
(PROPOSED)  
STA. 122+22  
19' RT.

LIGHT NO. 50  
(PROPOSED)  
STA. 123+70  
19' RT.

NOTE: AERIAL PHOTOGRAPHS SUPPLIED BY THE SIDWELL COMPANY

DRAWN BY: RGP/JMT	6978-00 CAD/DWG: P119-125 BASE	REVISIONS			PERU MORRIS ILLINOIS	<b>VILLAGE OF DIAMOND</b> <b>DIVISION STREET LIGHTING IMPROVEMENTS - 2010</b>	<b>PLAN SHEET - STA. 119+00 TO STA. 125+00</b>	SCALE: AS NOTED	SHEET 6
		DATE	BY					FILE NO.: 6978-00	OF 12
CHECKED BY: MWP/DJD	DATE: 09-24-09								