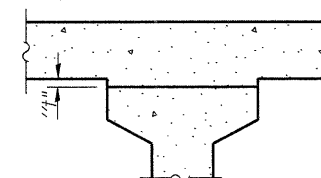


DEAD LOAD DEFLECTION DIAGRAM

(Includes weight of concrete, excluding beams).

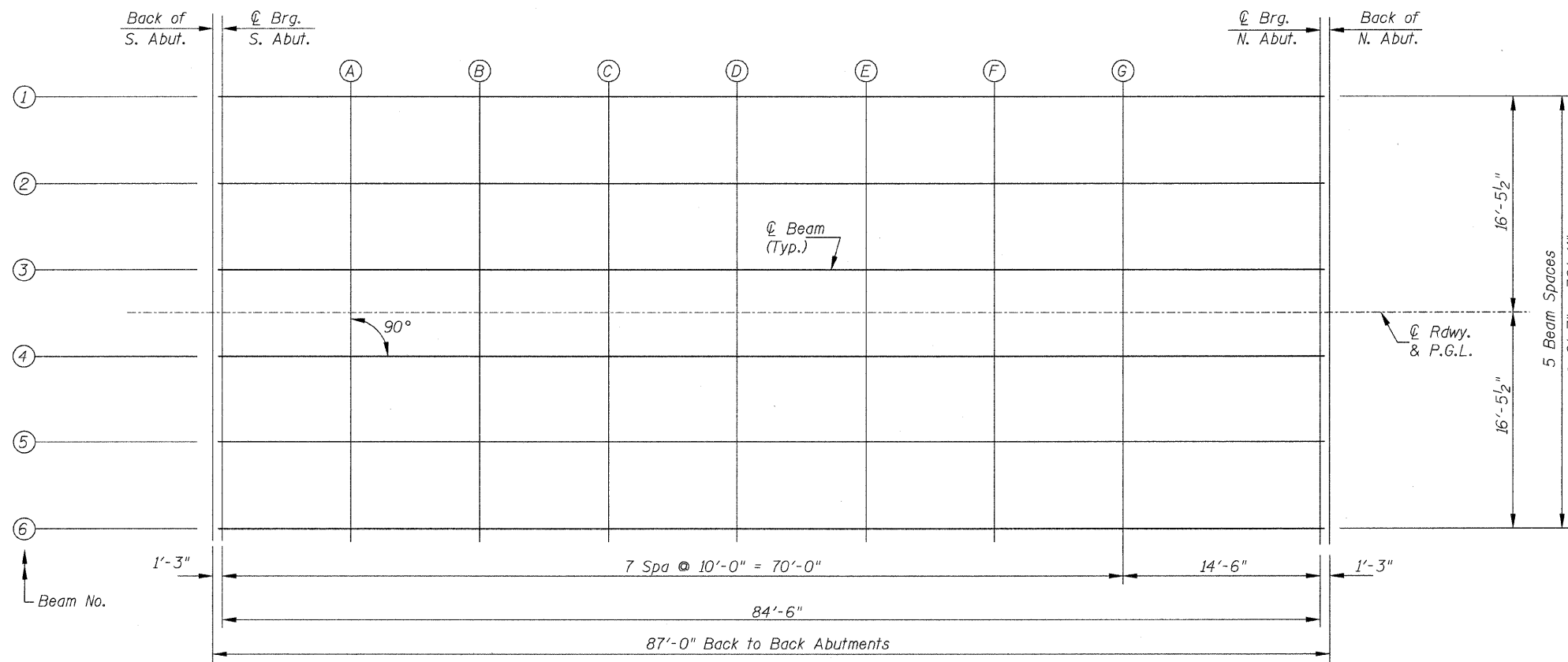
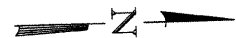
Note:

The above deflections are not to be used in the field if the engineer is working from the grade elevations adjusted for dead load deflections as shown below.



To determine "f": After all precast prestressed beams have been erected, elevations of the top flanges of the beams shall be taken at intervals shown below. These elevations subtracted from the "Theoretical Grade Elevations Adjusted for Dead Load Deflections" shown on Sh.#4 of 21, minus slab thickness, equals the fillet heights "f" above top flanges of beams.

FILLET HEIGHTS



PLAN (DECK ELEVATIONS)

TOP OF SLAB ELEVATIONS

SHEET NO. 3	ROUTE NO.	SECTION	COUNTY	TOTAL SHEETS	SHEET NO.
	CH 29	10-00649-00-BR	LASALLE	43	10
21 SHEETS	S.N. 050-3593		CONTRACT NO. 87430		
	FED. ROAD DIST. NO. 7 ILLINOIS		FED. AID PROJECT BRS-0099(043)		