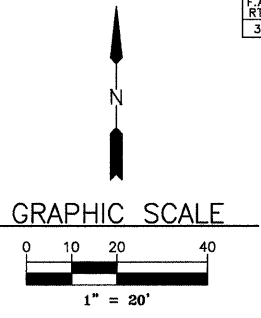


LEGEND

- | | |
|---|--|
| <ul style="list-style-type: none"> ☼-○-☼ PROPOSED ORNAMENTAL LIGHTING UNIT COMPLETE ☼-○-☼ EXISTING LIGHT □ EXISTING BURIED WIRING JUNCTION BOX ○ EXISTING CATCH BASIN ○ EXISTING UTILITY POLE ○ EXISTING INLET ○ EXISTING MANHOLE —G— EXISTING GAS —W— EXISTING WATER A DECORATIVE LIGHT TYPE A B DECORATIVE LIGHT TYPE B C DECORATIVE LIGHT TYPE C | <ul style="list-style-type: none"> —T— EXISTING TELEPHONE —E— EXISTING ELECTRICAL —G— EXISTING GAS —OE— EXISTING OVERHEAD ELECTRICAL — EXISTING R.O.W. — EXISTING PIPE CULVERT — EXISTING STORMSEWER — EXISTING SANITARY SEWER |
|---|--|

* REMOVAL OF LUMINAIRE, SALVAGE & LUMINAIRE, HIGH PRESSURE SODIUM SPECIAL (310 WATT)



LIGHT NO. 1
(EXISTING)
STA. 107+95
21' LT.

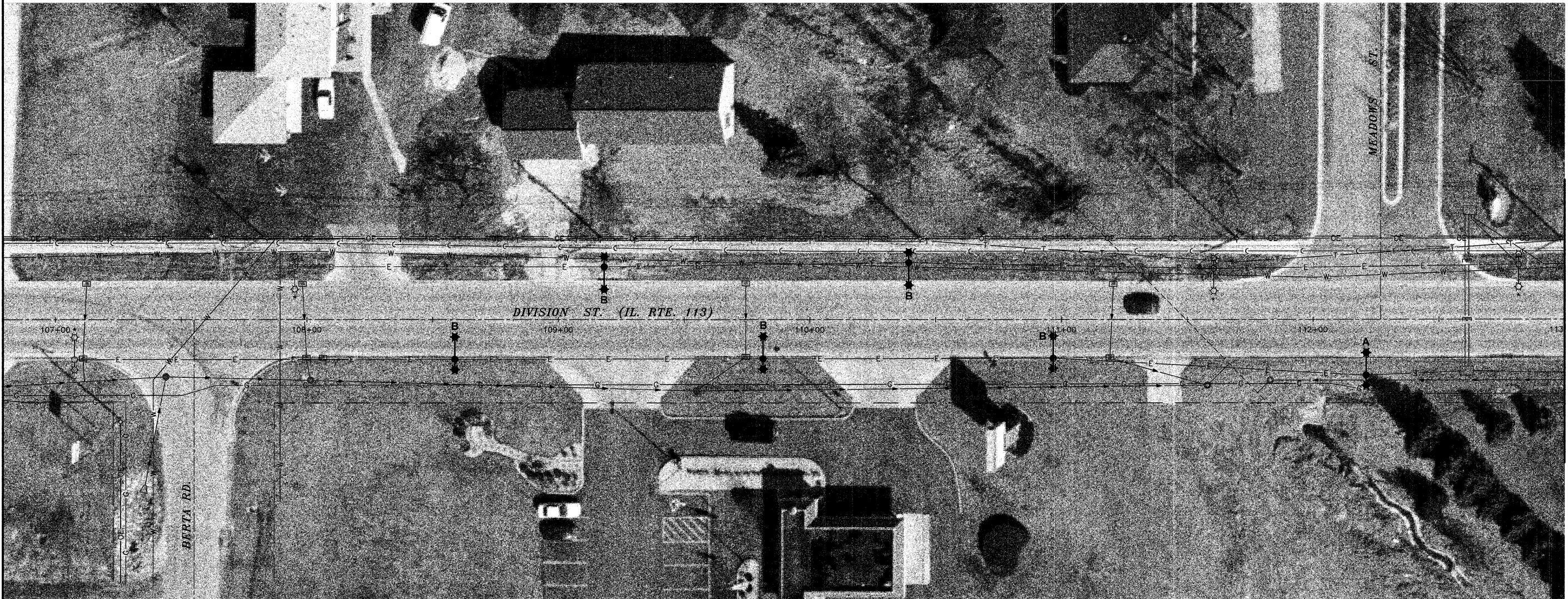
LIGHT NO. 2
(PROPOSED)
STA. 109+18
21' LT.

LIGHT NO. 3
(PROPOSED)
STA. 110+39
23' LT.

LIGHT NO. 4
(EXISTING)
STA. 111+61
20' LT.

LIGHTING CONTROL PANEL NO. 1
CONTROLS LIGHTS 1-5, 6-11,
39-42 AND 43-48

LIGHT NO. 5
(PROPOSED)
STA. 112+82
22' LT.



LIGHT NO. 39A
(EXISTING)
STA. 107+08
16' RT.

LIGHT NO. 39
(PROPOSED)
STA. 108+59
16' RT.

LIGHT NO. 40
(PROPOSED)
STA. 109+81
16' RT.

LIGHT NO. 41
(PROPOSED)
STA. 110+97
15' RT.

LIGHT NO. 42
(PROPOSED)
STA. 112+21
22' RT.

MATCH LINE - STA. 113+00

NOTE: AERIAL PHOTOGRAPHS SUPPLIED BY THE SIDWELL COMPANY

DRAWN BY: RGP/JMT	6978-00 CAD/DWG: P107-113 BASE
CHECKED BY: MWP/DJD	DATE: 09-24-09

REVISIONS	
DATE	BY

CHAMLIN ASSOCIATES
PERU MORRIS ILLINOIS

**VILLAGE OF DIAMOND
DIVISION STREET LIGHTING IMPROVEMENTS - 2010**

PLAN SHEET - STA. 107+00 TO STA. 113+00

SCALE: AS NOTED	SHEET 4
FILE NO.: 6978-00	OF 12