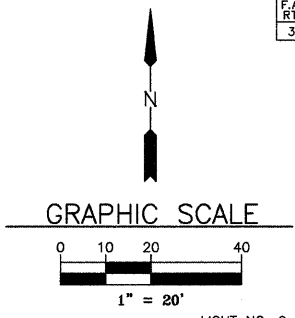


LEGEND

- | | |
|---|--|
| <ul style="list-style-type: none"> ☼-○-☼ PROPOSED ORNAMENTAL LIGHTING UNIT COMPLETE ☼-○-☼ EXISTING LIGHT □ EXISTING BURIED WIRING JUNCTION BOX ○ EXISTING CATCH BASIN ○ EXISTING UTILITY POLE ○ EXISTING INLET ○ EXISTING MANHOLE —G— EXISTING GAS —W— EXISTING WATER A DECORATIVE LIGHT TYPE A B DECORATIVE LIGHT TYPE B C DECORATIVE LIGHT TYPE C | <ul style="list-style-type: none"> —T— EXISTING TELEPHONE —E— EXISTING ELECTRICAL —G— EXISTING GAS —OE— EXISTING OVERHEAD ELECTRICAL — EXISTING R.O.W. - - - EXISTING PIPE CULVERT - - - EXISTING STORMSEWER - - - EXISTING SANITARY SEWER |
|---|--|
- * REMOVAL OF LUMINAIRE, SALVAGE & LUMINAIRE, HIGH PRESSURE SODIUM SPECIAL (310 WATT)

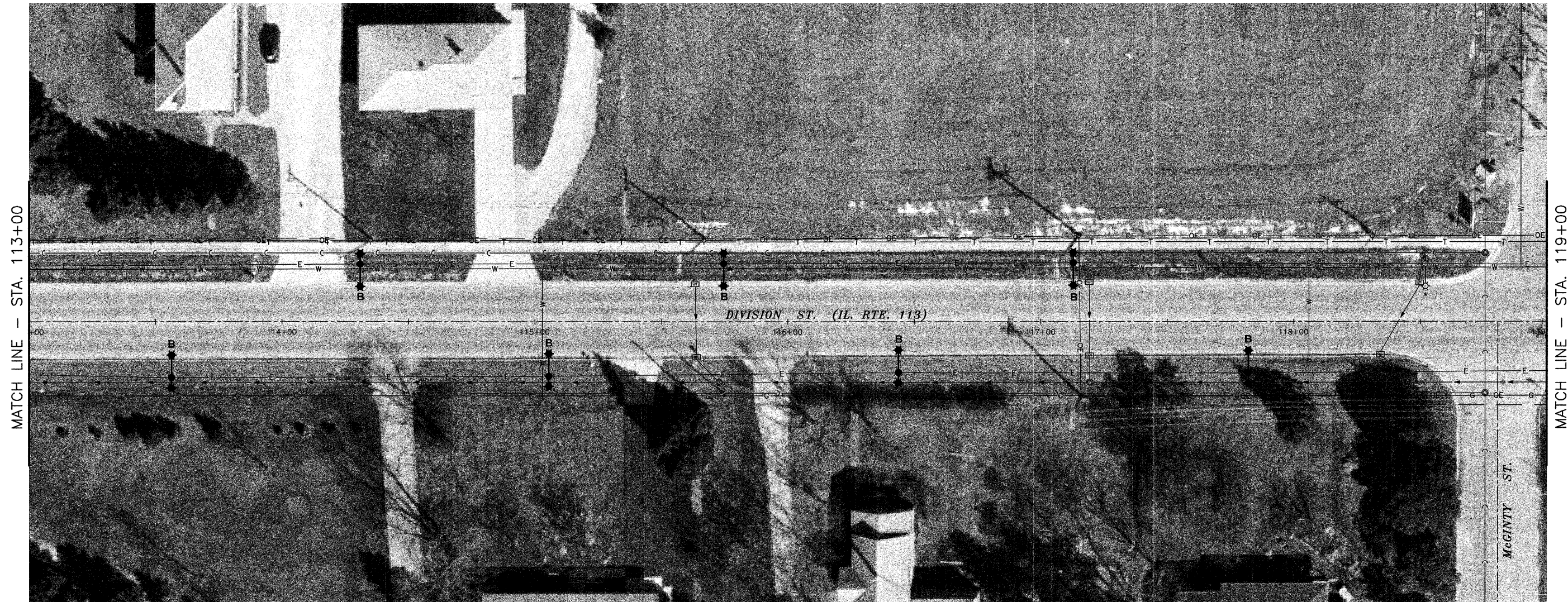


LIGHT NO. 6
(PROPOSED)
STA. 114+31
23' LT.

LIGHT NO. 7
(PROPOSED)
STA. 115+75
23' LT.

LIGHT NO. 8
(PROPOSED)
STA. 117+13
23' LT.

LIGHT NO. 9
(EXISTING)
STA. 118+52
23' LT.



LIGHT NO. 43
(PROPOSED)
STA. 113+56
22' RT.

LIGHT NO. 44
(PROPOSED)
STA. 115+05
22' RT.

LIGHT NO. 45
(PROPOSED)
STA. 116+44
20' RT.

LIGHT NO. 46
(PROPOSED)
STA. 117+82
20' RT.

NOTE: AERIAL PHOTOGRAPHS SUPPLIED BY THE SIDWELL COMPANY

DRAWN BY: RGP/JMT	6978-00 CAD/DWG: P113-119 BASE
CHECKED BY: MWP/DJD	DATE: 09-24-09

REVISIONS	
DATE	BY



PERU MORRIS
ILLINOIS

VILLAGE OF DIAMOND
DIVISION STREET LIGHTING IMPROVEMENTS - 2010

PLAN SHEET - STA. 113+00 TO STA. 119+00

SCALE: AS NOTED	SHEET 5
FILE NO.: 6978-00	OF 12