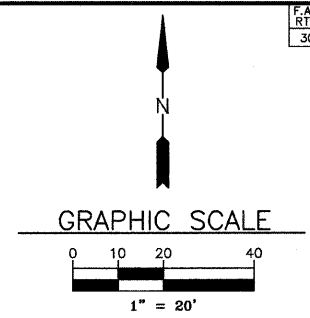


LEGEND

- | | |
|---|--|
| <ul style="list-style-type: none"> ☼-☼-☼ PROPOSED ORNAMENTAL LIGHTING UNIT COMPLETE ☼-○-☼ EXISTING LIGHT □ EXISTING BURIED WIRING JUNCTION BOX ○ EXISTING CATCH BASIN ○ EXISTING UTILITY POLE □ EXISTING INLET ○ EXISTING MANHOLE G EXISTING GAS W EXISTING WATER A DECORATIVE LIGHT TYPE A B DECORATIVE LIGHT TYPE B C DECORATIVE LIGHT TYPE C | <ul style="list-style-type: none"> T EXISTING TELEPHONE E EXISTING ELECTRICAL G EXISTING GAS OE EXISTING OVERHEAD ELECTRICAL — EXISTING R.O.W. — EXISTING PIPE CULVERT — EXISTING STORMSEWER — EXISTING SANITARY SEWER |
|---|--|
- * REMOVAL OF LUMINAIRE, SALVAGE & LUMINAIRE, HIGH PRESSURE SODIUM SPECIAL (310 WATT)

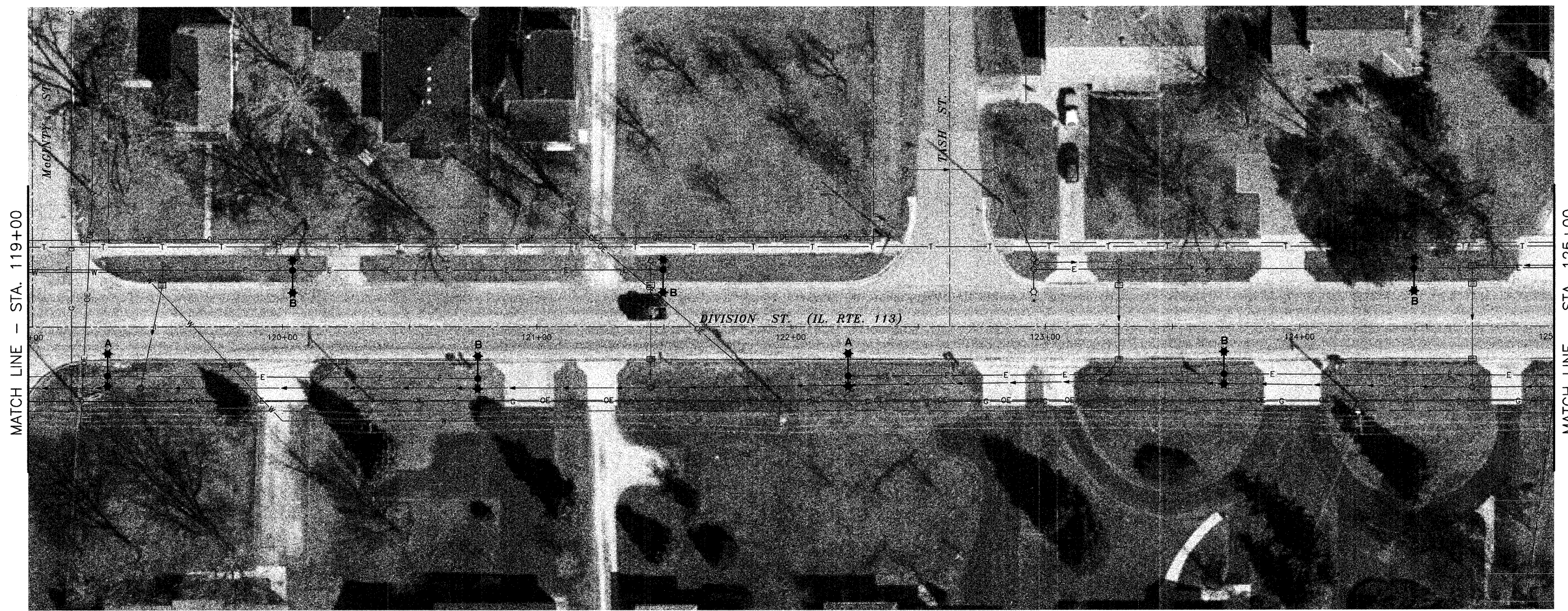


LIGHT NO. 10
(PROPOSED)
STA. 120+04
22' LT.

LIGHT NO. 11
(PROPOSED)
STA. 121+50
23' LT.

LIGHT NO. 12
(EXISTING)
STA. 122+95
23' LT.

LIGHT NO. 13
(PROPOSED)
STA. 124+45
23' LT.



LIGHT NO. 47
(PROPOSED)
STA. 119+31
19' RT.

LIGHT NO. 48
(PROPOSED)
STA. 120+77
20' RT.

LIGHT NO. 49
(PROPOSED)
STA. 122+22
19' RT.

LIGHT NO. 50
(PROPOSED)
STA. 123+70
19' RT.

NOTE: AERIAL PHOTOGRAPHS SUPPLIED BY THE SIDWELL COMPANY

DRAWN BY: RGP/JMT	6978-00 CAD/DWG: P119-125 BASE	REVISIONS			PERU MORRIS ILLINOIS	VILLAGE OF DIAMOND DIVISION STREET LIGHTING IMPROVEMENTS - 2010	PLAN SHEET - STA. 119+00 TO STA. 125+00	SCALE: AS NOTED	SHEET 6
		DATE	BY					FILE NO.: 6978-00	OF 12
CHECKED BY: MWP/DJD	DATE: 09-24-09								