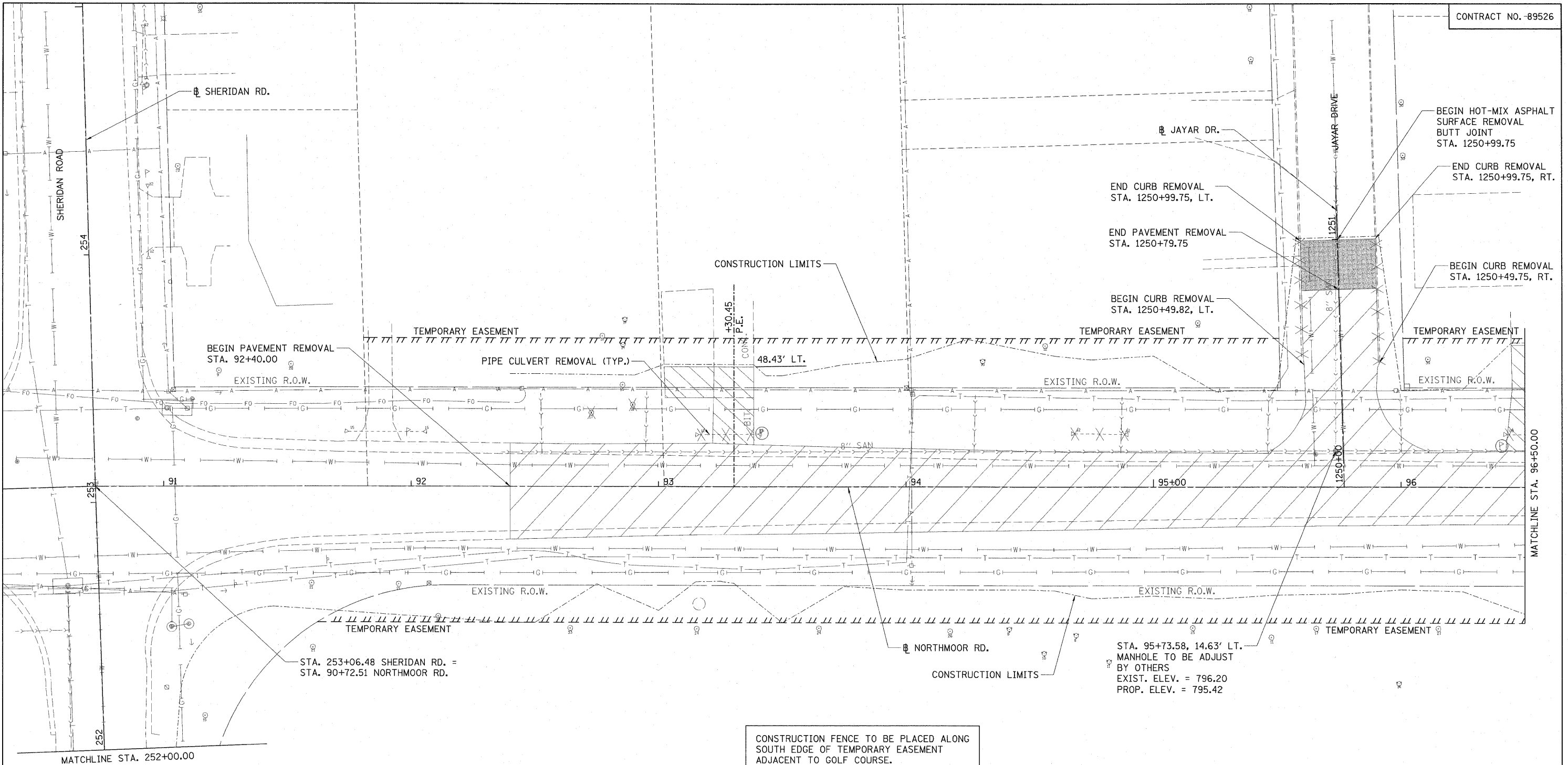


© Copyright Hanson Professional Services Inc. 2009  
**HANSON**  
 Hanson Professional Services Inc.



CONSTRUCTION FENCE TO BE PLACED ALONG SOUTH EDGE OF TEMPORARY EASEMENT ADJACENT TO GOLF COURSE. STA 91+50, 55' RT TO STA 104+50, 55' RT

**LEGEND**

- PAVEMENT REMOVAL
- DRIVEWAY PAVEMENT REMOVAL
- HOT-MIX ASPHALT SURFACE REMOVAL - BUTT JOINT
- SIDEWALK REMOVAL
- ISLAND REMOVAL
- CURB REMOVAL
- PIPE CULVERT REMOVAL
- MAILBOX REMOVAL AND RELOCATION
- TREE REMOVAL
- LIGHT POLE REMOVAL



FILE NAME =	USER NAME = Ander00846	DESIGNED - RLA	REVISED -
I:\09\Jobs\09L0027B\CADD\Road\Sheet\c-10\dem.dgn		DRAWN - RLA	REVISED -
PLOT SCALE = 20.0000' / 1" =		CHECKED - CAL	REVISED -
PLOT DATE = 11/17/2009		DATE - 10/16/2009	REVISED -

**STATE OF ILLINOIS  
 DEPARTMENT OF TRANSPORTATION**

**NORTHMOOR RD. REMOVAL PLAN**

SCALE: 1"=20' SHEET NO. OF SHEETS STA. 92+40.00 TO STA. 96+50.00

F.A.U. RTE.	SECTION	COUNTY	TOTAL SHEETS	SHEET NO.
6647	08-00302-00-PV	PEORIA	85	14
	09-00047-01-PV			
CONTRACT NO. 89526				