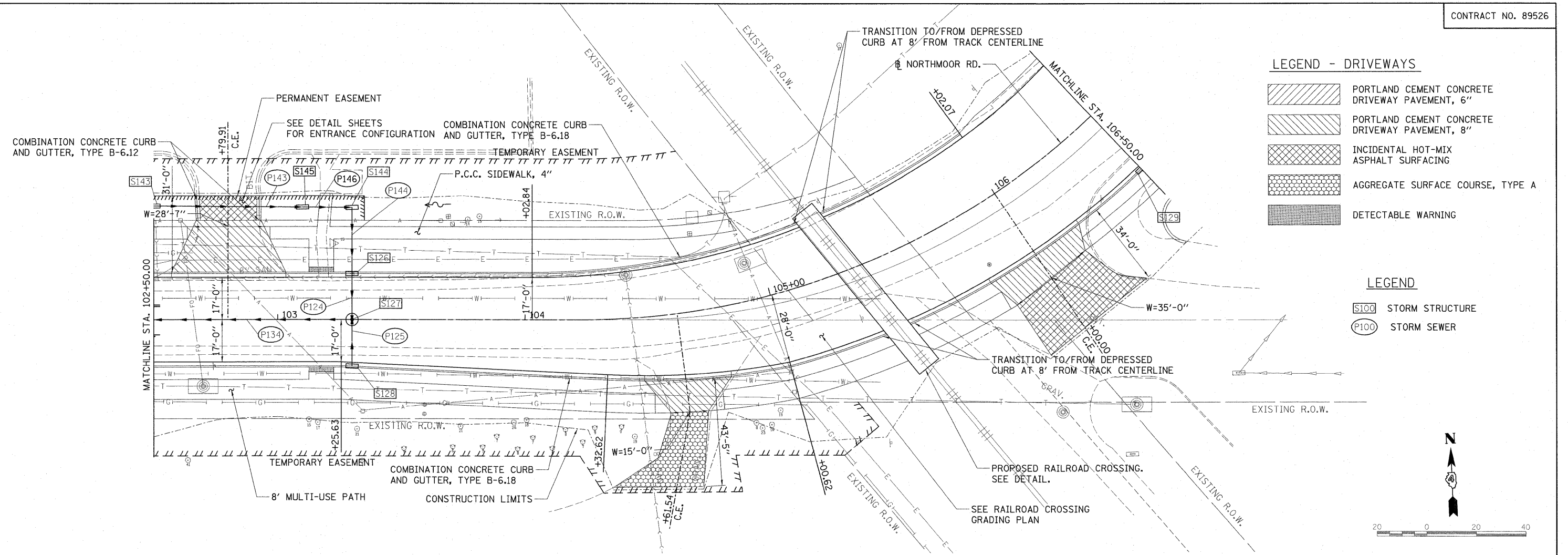


PLAN	REVISION	DATE
NO.	NO.	
BY	BY	BY
DATE	DATE	DATE
NO.	NO.	NO.
NO.	NO.	NO.



PROFILE	REVISION	DATE
NO.	NO.	
BY	BY	BY
DATE	DATE	DATE
NO.	NO.	NO.
NO.	NO.	NO.

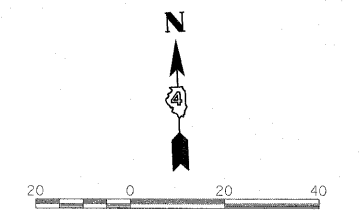


**LEGEND - DRIVEWAYS**

[Hatched Pattern]	PORTLAND CEMENT CONCRETE DRIVEWAY PAVEMENT, 6"
[Hatched Pattern]	PORTLAND CEMENT CONCRETE DRIVEWAY PAVEMENT, 8"
[Cross-hatched Pattern]	INCIDENTAL HOT-MIX ASPHALT SURFACING
[Dotted Pattern]	AGGREGATE SURFACE COURSE, TYPE A
[Stippled Pattern]	DETECTABLE WARNING

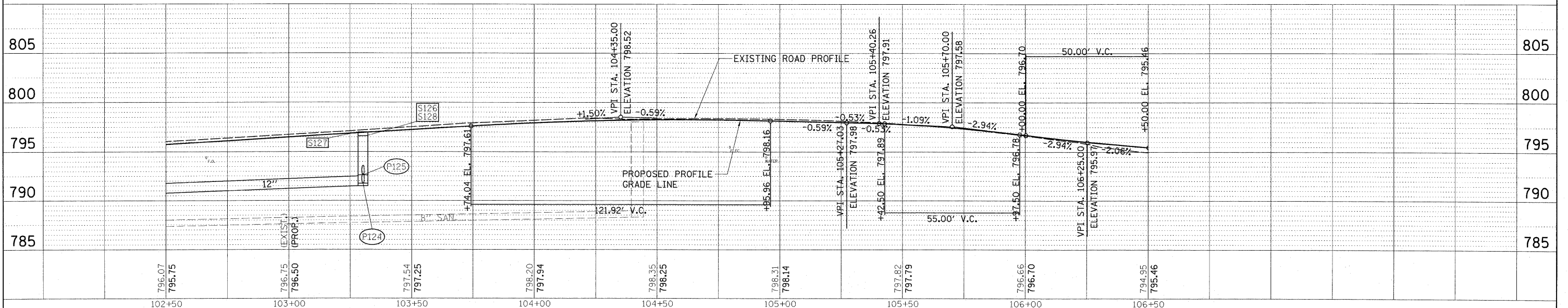
**LEGEND**

[S100 Symbol]	STORM STRUCTURE
[P100 Symbol]	STORM SEWER



PIPE NUMBER	FROM STRUCTURE	U/S INVERT	TO STRUCTURE	D/S INVERT	CLASS/TYPE	DIAMETER	LENGTH	SLOPE	TRENCH BACKFILL
P124	S126	791.74	S127	791.59	STORM SEWERS, TYPE 2, REINFORCED CONCRETE CULVERT, STORM DRAIN, AND SEWER PIPE, CLASS III	12	15.0	1.00%	10.0
P125	S128	792.81	S127	792.52	STORM SEWER (WATER MAIN REQUIREMENTS)	12	15.5	0.58%	5.0
P134	S127	791.49	S124	789.68	STORM SEWERS, TYPE 2, REINFORCED CONCRETE CULVERT, STORM DRAIN, AND SEWER PIPE, CLASS III	12	196.0	0.92%	123.9
P143	S143	792.48	S145	792.19	STORM SEWERS, TYPE 1, REINFORCED CONCRETE CULVERT, STORM DRAIN, AND SEWER PIPE, CLASS IV	12	58.0	0.50%	10.0
P144	S144	791.98	S126	791.84	STORM SEWERS, TYPE 2, REINFORCED CONCRETE CULVERT, STORM DRAIN, AND SEWER PIPE, CLASS III	12	26.0	0.54%	8.9
P146	S145	792.19	S144	792.08	STORM SEWERS, TYPE 1, REINFORCED CONCRETE CULVERT, STORM DRAIN, AND SEWER PIPE, CLASS IV	12	18.0	0.61%	3.1

STRUCTURE NUMBER	STATION	OFFSET	TYPE	RIM AND INVERT ELEVATIONS				
				ELEVATION	N	S	E	W
S126	103+30.00	18.25	INLETS, TYPE G-1	796.61	791.84	791.74		
S127	103+30.00	0.00	MANHOLES, TYPE A, 4-DIAMETER, TYPE 1 FRAME, CLOSED LID	796.95	791.59	792.52		791.49
S128	103+30.00	18.25	INLETS, TYPE G-1	796.61	792.61			
S129	106+50.00	29.25	INLETS, TYPE G-1	794.90			791.11	
S143	102+50.00	45.93	INLETS, TYPE A, TYPE 8 GRATE	793.98			792.48	
S144	103+30.00	46.37	INLETS, TYPE B, TYPE 8 GRATE	795.40		791.98		792.08
S145	103+10.00	45.46	INLETS, TYPE B, TYPE 8 GRATE	795.80		792.19		792.19



FILE NAME = I:\09Jobs\09L0227B\CADD\Road\Sheet\c-783.dgn	USER NAME = Ander08946	DESIGNED - MPB	REVISED -	<p align="center"><b>STATE OF ILLINOIS</b> <b>DEPARTMENT OF TRANSPORTATION</b></p>	<b>NORTHMOOR RD. PLAN AND PROFILE</b>			F.A.J. RTE. 6647	SECTION 08-00302-00-PV	COUNTY PEORIA	TOTAL SHEETS 85	SHEET NO. 21
PLOT SCALE = 20.0000' / in.	DATE = 10/16/2009	DRAWN - RLA	REVISED - CAL		SCALE: 1"=20'	SHEET NO. OF SHEETS	STA. 102+50.00 TO STA. 106+50.00	FED. ROAD DIST. NO. ILLINOIS	FED. AID PROJECT ARA-M-5093(139)	CONTRACT NO. 89526		
		CHECKED -	REVISED -									
		DATE = 10/16/2009	REVISED -									