

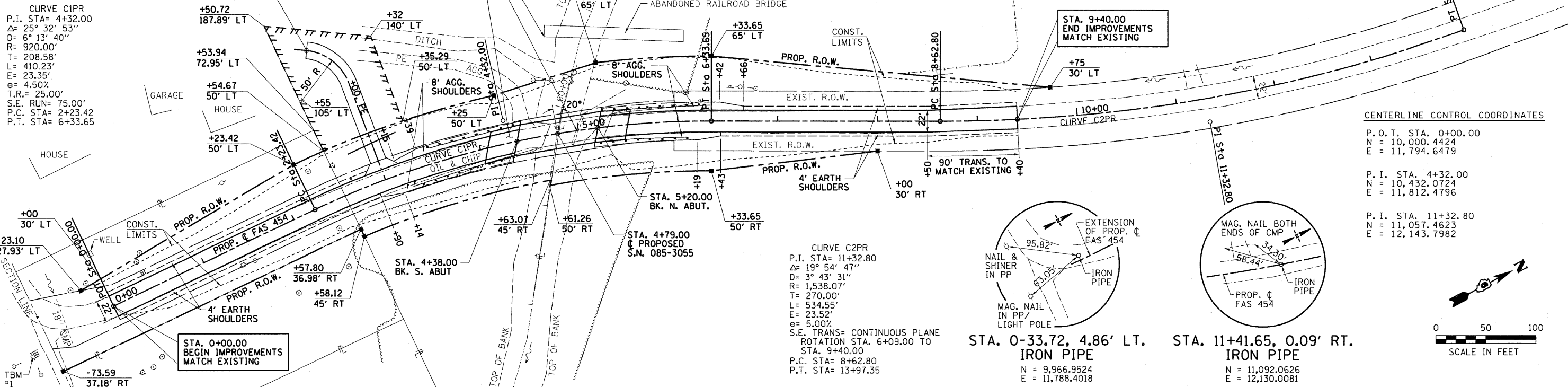
TBM #1: STA. 0-95, 11' RT.
RR SPIKE IN POWER POLE
ELEV = 446.75

TBM #2: CHISELED "□" IN S.E. WING
ABANDONED RR BRIDGE
ELEV = 452.01

CURVE C1PR
P.I. STA= 4+32.00
Δ= 25° 32' 53"
D= 6° 13' 40"
R= 920.00'
T= 208.58'
L= 410.23'
E= 23.35'
e= 4.50%
T.R.= 25.00'
S.E. RUN= 75.00'
P.C. STA= 2+23.42
P.T. STA= 6+33.65

EXISTING 2 SPAN BRIDGE
CONCRETE DECK ON STEEL STRINGERS
TIMBER PILE BENT PIER AND
CLOSED TIMBER ABUTMENTS
S.N. 085-3081

BRIDGE APPROACH
SLAB (TYP.)
SEE BRIDGE PLANS



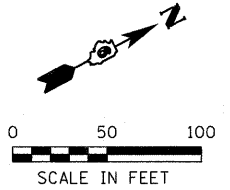
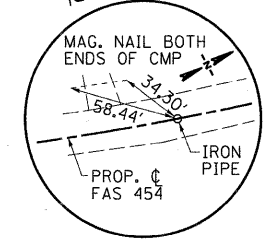
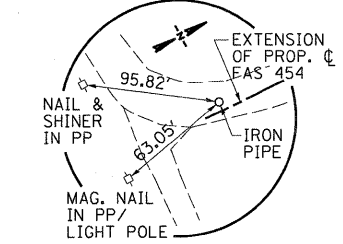
CENTERLINE CONTROL COORDINATES

P.O.T. STA. 0+00.00
N = 10,000.4424
E = 11,794.6479

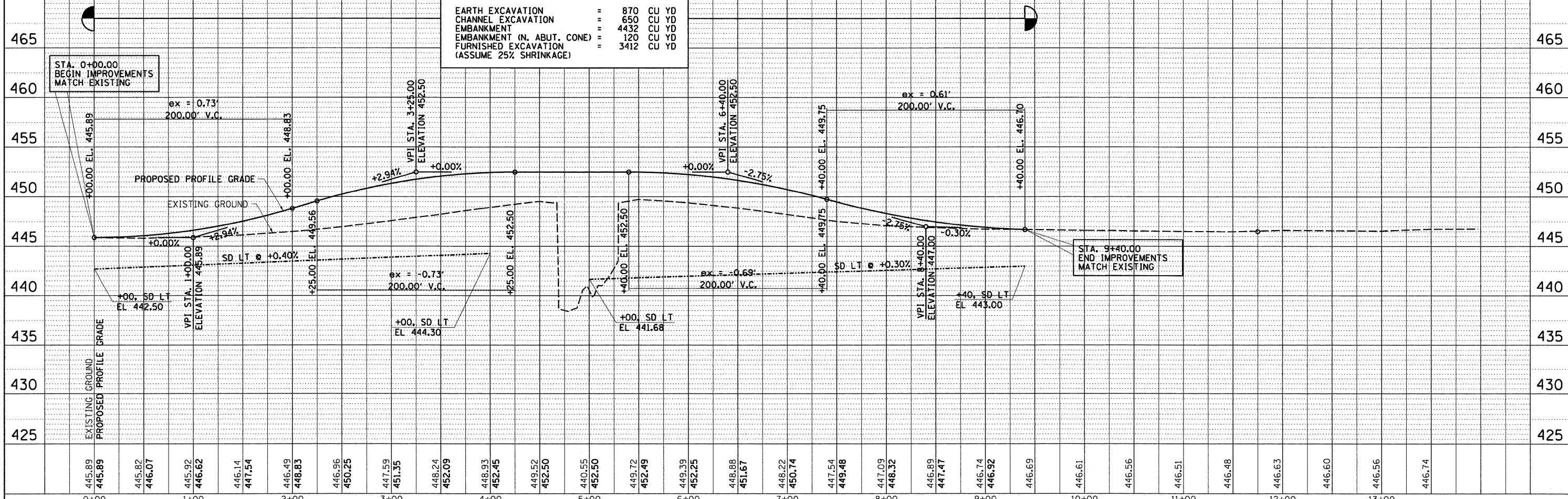
P.I. STA. 4+32.00
N = 10,432.0724
E = 11,812.4796

P.I. STA. 11+32.80
N = 11,057.4623
E = 12,143.7982

CURVE C2PR
P.I. STA= 11+32.80
Δ= 19° 54' 47"
D= 3° 43' 31"
R= 1,538.07'
T= 270.00'
L= 534.55'
E= 23.52'
e= 5.00%
S.E. TRANS= CONTINUOUS PLANE
ROTATION STA. 6+09.00 TO
STA. 9+40.00
P.C. STA= 8+62.80
P.T. STA= 13+97.35



EARTH EXCAVATION = 870 CU YD
CHANNEL EXCAVATION = 650 CU YD
EMBANKMENT = 4432 CU YD
EMBANKMENT (N. ABUT. CONE) = 120 CU YD
FURNISHED EXCAVATION (ASSUME 25% SHRINKAGE) = 3412 CU YD



PLAN	DATE
BY	
NO.	
REVISED	
ALIGNMENT CHECKED	
RT. OF WAY CHECKED	
FILE NAME	

PROFILE	DATE
BY	
NO.	
REVISED	
GRADES CHECKED	
B.M. NOTED	
STRUCTURE NOTATIONS CHECKED	

GREENE & BRADFORD, INC.
OF SPENGLER



STATE OF ILLINOIS
DEPARTMENT OF TRANSPORTATION

PLAN AND PROFILE

FILE NAME = J:\07258\CADD\CAD\sheet\07258-shr-pln-prof.dgn	USER NAME = Frankv	DESIGNED - DG	REVISED - 9/10/09 IDOT REVIEW	<table border="1"> <tr><td>F.A.S. RTE.</td><td>SECTION</td><td>COUNTY</td><td>TOTAL SHEETS</td><td>SHEET NO.</td></tr> <tr><td>454</td><td>04-00070-00-BR</td><td>SCHUYLER</td><td>30</td><td>5</td></tr> <tr><td colspan="4">CONTRACT NO. 93499</td><td></td></tr> <tr><td colspan="4">FED. ROAD DIST. NO.</td><td>ILLINOIS FED. AID PROJECT BRS-0454(103)</td></tr> </table>	F.A.S. RTE.	SECTION	COUNTY	TOTAL SHEETS	SHEET NO.	454	04-00070-00-BR	SCHUYLER	30	5	CONTRACT NO. 93499					FED. ROAD DIST. NO.				ILLINOIS FED. AID PROJECT BRS-0454(103)
F.A.S. RTE.	SECTION	COUNTY	TOTAL SHEETS		SHEET NO.																			
454	04-00070-00-BR	SCHUYLER	30		5																			
CONTRACT NO. 93499																								
FED. ROAD DIST. NO.				ILLINOIS FED. AID PROJECT BRS-0454(103)																				
PLOT SCALE = 50.0000' / in.	PLDT DATE = 9/18/2009	CHECKED - WCB	REVISED -																					
G&B PROJECT: 07258	DATE - 9/30/08	DRAWN - MDS	REVISED -																					
PLOT DRIVER = VBI_TDS700_PS_LOCAL_IDOT.plt		DATE - 9/30/08	REVISED -																					

SCALE: 1" = 50' SHEET NO. 1 OF 1 SHEETS STA. 0+00 TO STA. 14+50