

STATE OF ILLINOIS
DEPARTMENT OF TRANSPORTATION

GENERAL NOTES

Fasteners shall be AASHTO M164 Type 1, mechanically galvanized bolts. Bolts 3/4" in. ϕ , holes 5/8" in. ϕ , unless otherwise noted.

Calculated weight of Structural Steel = 71,660 lbs.

No field welding is permitted except as specified in the contract documents.

Reinforcement bars shall conform to the requirements of ASTM A 706 Gr 60. See Special Provisions.

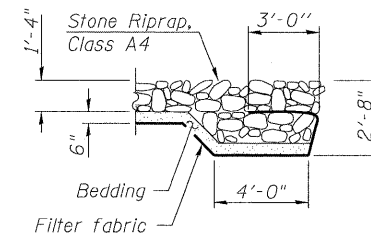
Reinforcement bars designated (E) shall be epoxy coated.

The Inorganic Zinc Rich Primer / Acrylic / Acrylic Paint System shall be used for shop and field painting of new structural steel except where otherwise noted. The color of the final finish coat for all interior steel surfaces shall be gray, Munsell No. 5B 7/1. The color of the final finish coat for the exterior and bottom flange of the fascia beams shall be Interstate Green, Munsell No. 7.5G 4/8. See Special Provision for "Cleaning and Painting New Metal Structures".

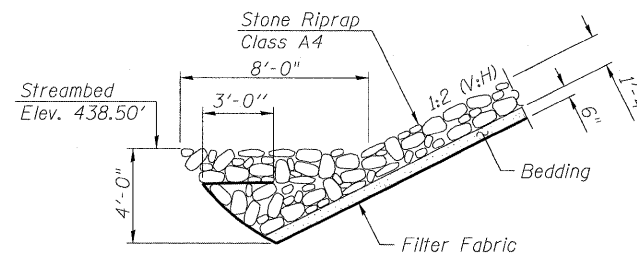
Layout of slope protection system may be varied in the field to suit ground conditions as directed by the Engineer.

The Contractor shall drive test piles to 110% of the nominal required bearing specified in production locations at substructures specified or approved by the Engineer before ordering the remainder of piles.

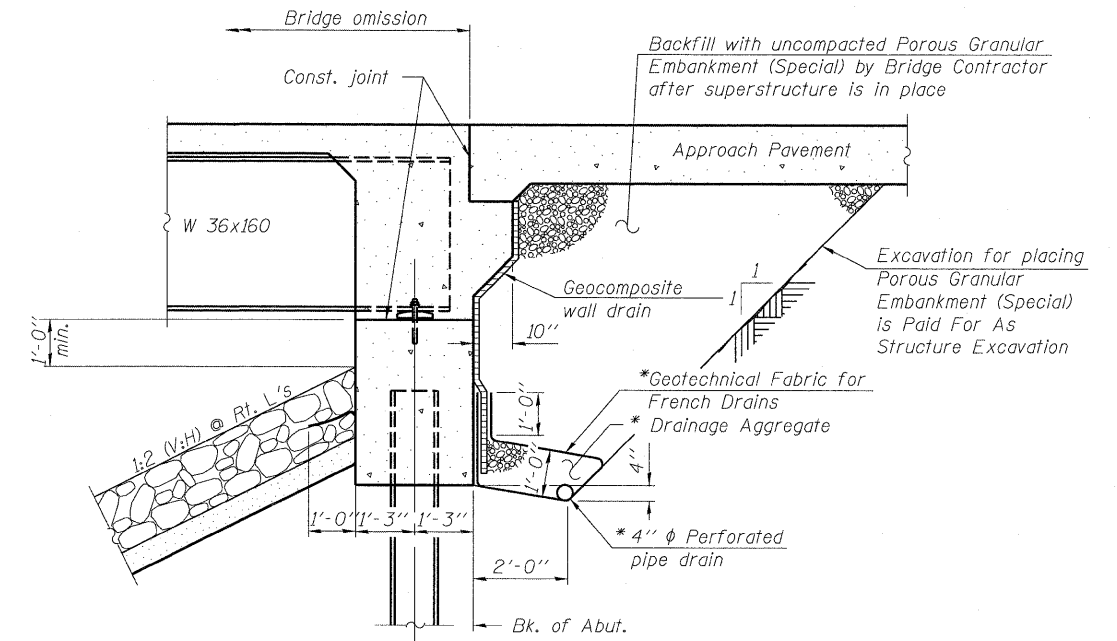
IDNR/OWR has issued permit DS2008073 for the construction of this project.



SECTION A-A



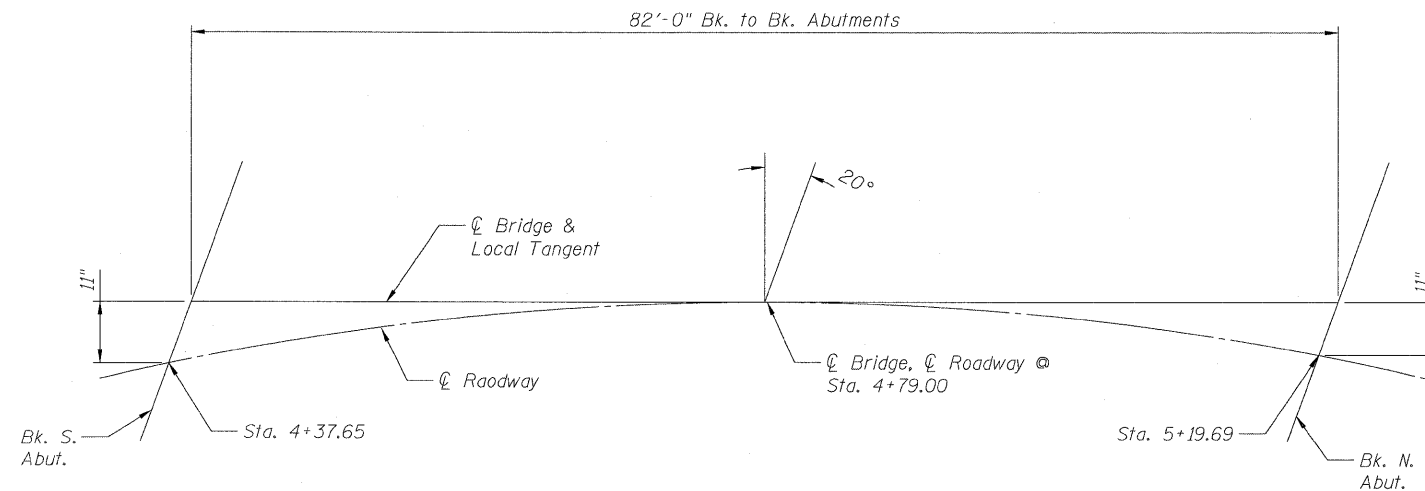
STONE RIPRAP ANCHOR DETAIL



SECTION THRU INTEGRAL ABUTMENT
(Horiz. dim. @ Rt. L's)

Note:
All drainage system components shall extend to 2'-0" from the end of each wingwall except an outlet pipe shall extend until intersecting with the side slopes. The pipes shall drain into concrete headwalls. (See article 601.05 of the Standard Specifications and Highway Standard 601101).

* Included in the cost of Pipe Underdrains for Structures, 4"



OFFSET SKETCH

CURVE DATA

PI Sta. = 4+32.00
 $\Delta = 25^{\circ}32'53''$
 $D = 6^{\circ}13'40''$
 $T = 208.58'$
 $L = 410.23'$
 $R = 920.00'$
 $E = 23.35'$
 $e = 4.50\%$
 $TR = 25.00'$
 $SE Run = 75.00'$
 $PC Sta. = 2+23.42$
 $PT Sta. = 6+33.65$

INDEX OF SHEETS

- 1 General Plan and Elevation
- 2 General Data
- 3-4 Top of Slab Elevations
- 5 Superstructure
- 6 Superstructure Details
- 7 Steel Railing, Type S-1
- 8 Structural Steel Details
- 9 North Abutment
- 10 South Abutment
- 11-12 Bridge Approach Slab Details
- 13 Metal Shell Piles
- 14 Anchor Bolt Details
- 15 Bar Splicer Assembly Details
- 16-17 Soil Boring Logs

GENERAL DATA
F.A.S. ROUTE 454
SECTION 04-00070-00-BR
SCHUYLER COUNTY
STATION 4+79.00
S.N. 085-3055



DESIGNED	NIWINSKI
CHECKED	TRELLO
DRAWN	VERENSKI
CHECKED	TRELLO

G&B PROJECT: - PLOT DRIVER = V8.T0S700.PS.LOCAL.ID001.pltcf
FILE NAME = J:\07258\CADD\CAD\Sheets\SN 085-3055\0853055-07258-Sht-Gen Data.dgn
PLOT DATE = 9/18/2009 PLOT SCALE = 4:2.0000 "/>

SHEET NO. 2	F.A.S. RTE.	SECTION	COUNTY	TOTAL SHEETS	SHEET NO.
17 SHEETS	454	04-00070-00-BR	SCHUYLER	30	10
FED. ROAD DIST. NO. _			ILLINOIS FED. AID PROJECT		
			CONTRACT NO. 93499		