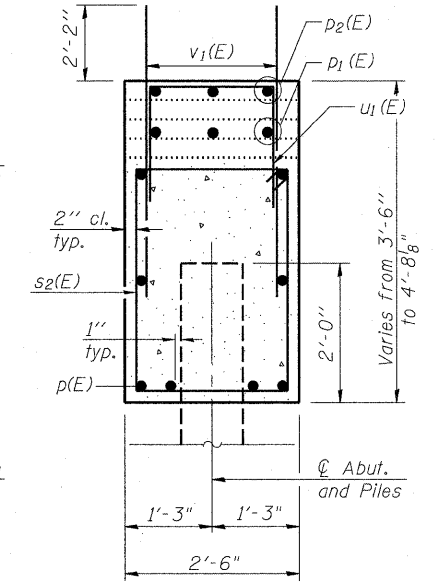
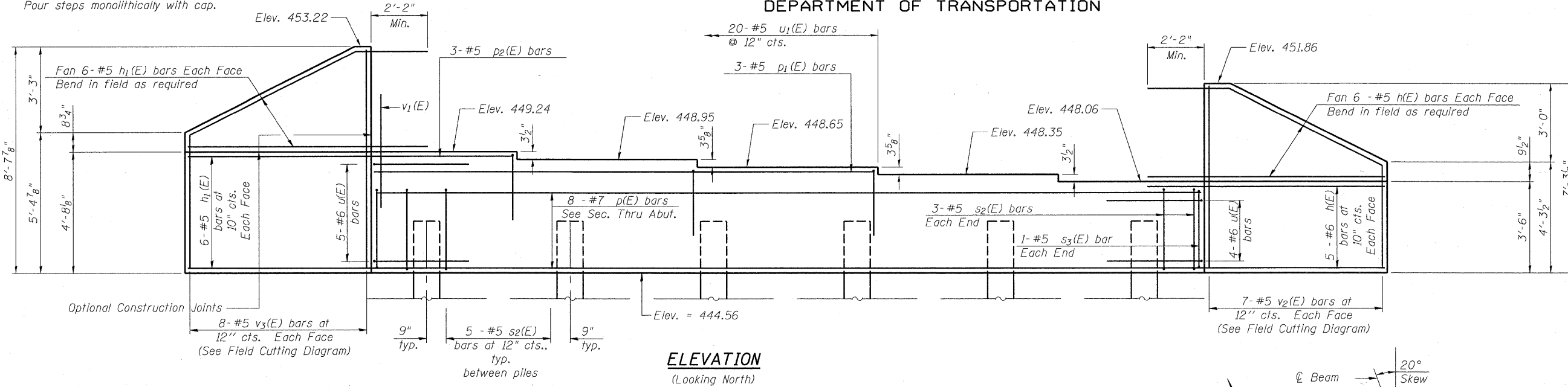


STATE OF ILLINOIS
DEPARTMENT OF TRANSPORTATION

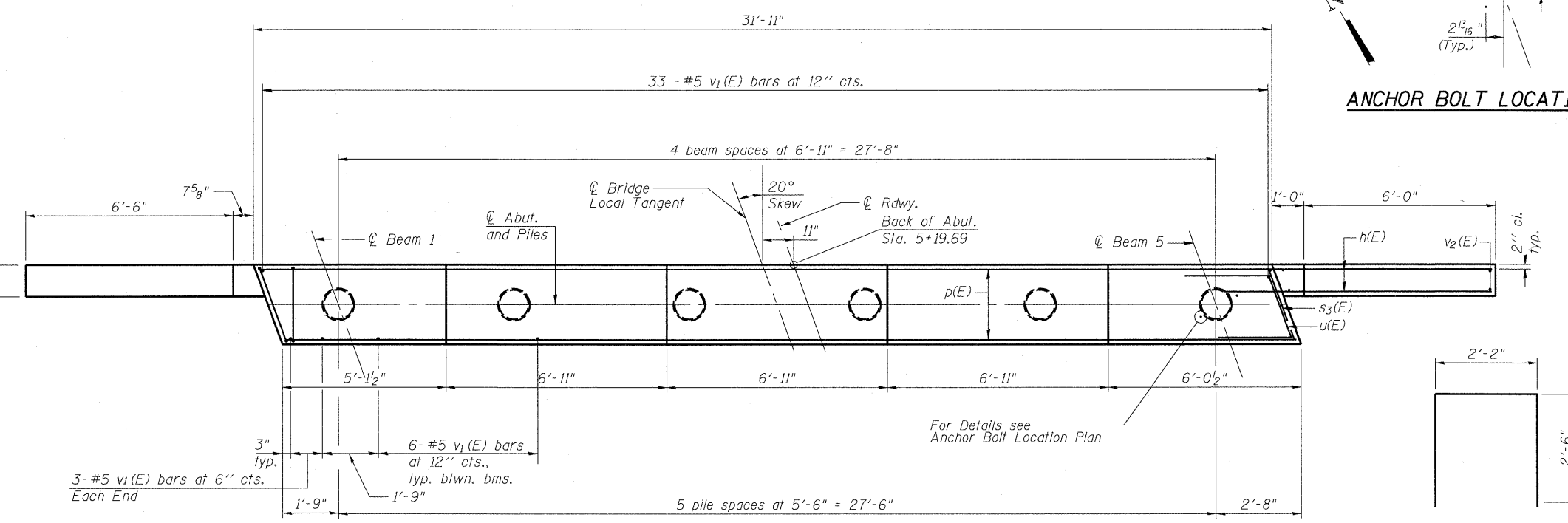
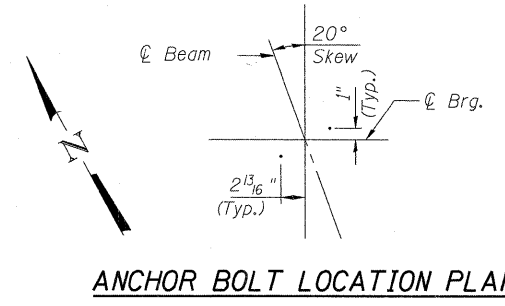
Notes:
Four steps monolithically with cap.



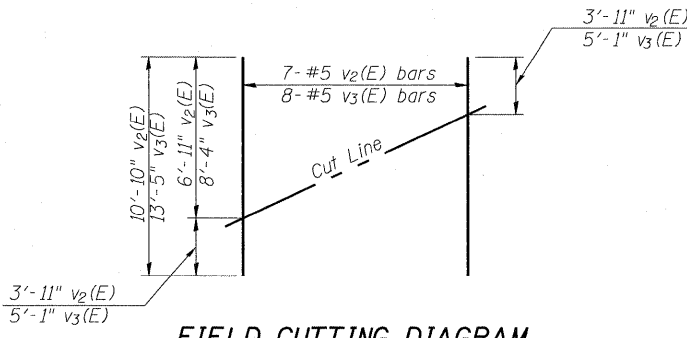
SEC. THRU ABUT.
BILL OF MATERIAL

Bar	No.	Size	Length	Shape
h(E)	22	#5	9'-2"	—
h1(E)	24	#5	9'-8"	—
p(E)	8	#7	31'-7"	—
p1(E)	3	#5	19'-0"	—
p2(E)	3	#5	4'-9"	—
s2(E)	31	#5	11'-5"	□
s3(E)	2	#5	11'-9"	□
u(E)	9	#6	10'-2"	⌋
u1(E)	20	#5	7'-2"	⌋
v1(E)	63	#5	4'-4"	—
v2(E)	7	#5	10'-10"	—
v3(E)	8	#5	13'-5"	—
Structure Excavation		Cu. Yd.	59	
Concrete Structures		Cu. Yd.	15.6	
Reinforcement Bars, Epoxy Coated		Pound	2,200	
Furnishing - Metal Shell Piles, 12" φ x 0.25"		Foot	210	
Driving Piles		Foot	210	

For details of piles see sheet 13 of 17.



BAR u1(E)



FIELD CUTTING DIAGRAM

Order v2(E) and v3(E) full length. Cut as shown and use remainder of bars in opposite face.

BARS s2(E) & s3(E)

BAR u(E)

PILE DATA

Type: Metal Shell - 12" Dia. x 0.25" wall
Nominal Required Bearing: 334 Kips
Factored Resistance Available: 167 Kips
Est. Length: 35'
No. Production Piles: 6
No. Test Piles: 0



DESIGNED	NIEWINSKI
CHECKED	TRELLO
DRAWN	VERENSKI
CHECKED	TRELLO

NORTH ABUTMENT
F.A.S. ROUTE 454
SECTION 04-0070-00-BR
SCHUYLER COUNTY
STATION 4+79.00
S.N. 085-3055

SHEET NO. 9	F.A.S. RTE. 454	SECTION 04-0070-00-BR	COUNTY SCHUYLER	TOTAL SHEETS 30	SHEET NO. 17
17 SHEETS	CONTRACT NO. 93499		FED. ROAD DIST. NO. ILLINOIS FED. AID PROJECT		