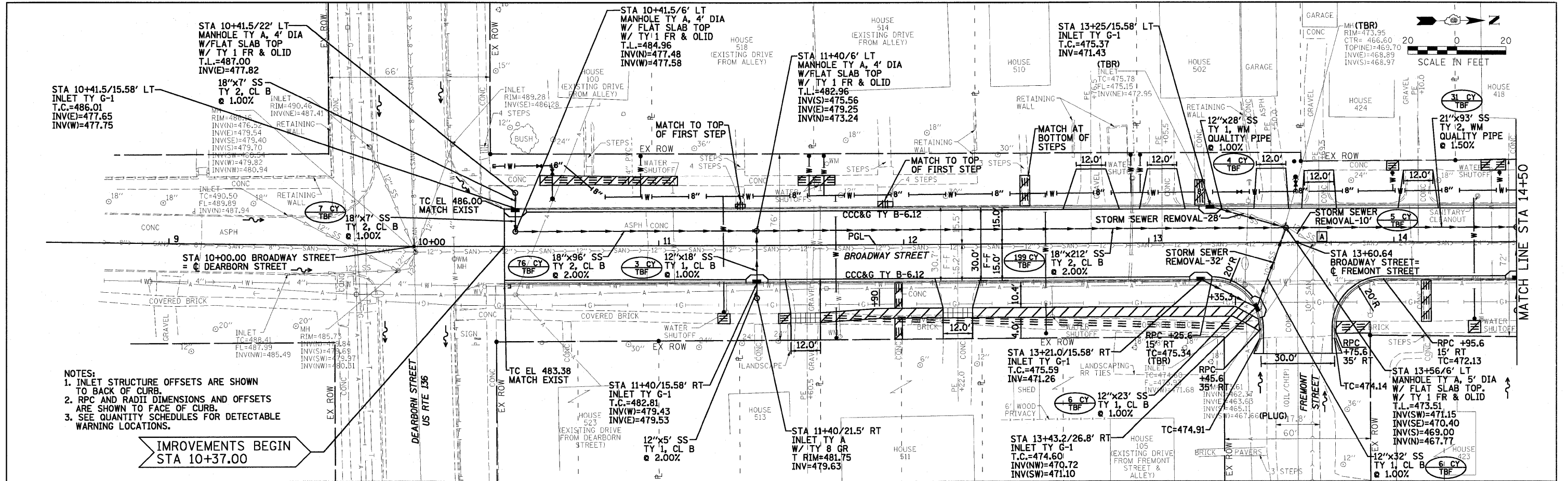


DATE	BY
DATE	BY

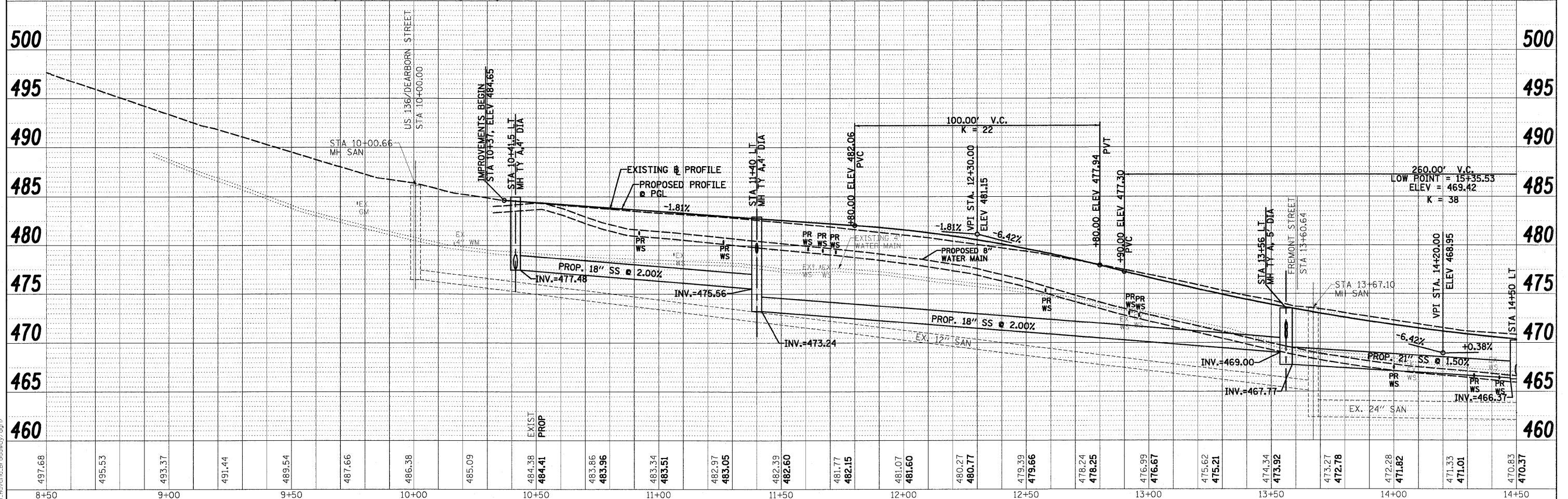
DATE	BY
DATE	BY

0801364.P&P1.dgn
7/15/17 AM
9/29/2009
P:\2009\0801364_Havercr-Broadway\9p.m/



- NOTES:
1. INLET STRUCTURE OFFSETS ARE SHOWN TO BACK OF CURB.
2. RPC AND RADII DIMENSIONS AND OFFSETS ARE SHOWN TO FACE OF CURB.
3. SEE QUANTITY SCHEDULES FOR DETECTABLE WARNING LOCATIONS.

IMPROVEMENTS BEGIN
STA 10+37.00



FILE NAME = 0801364.P&P1.dgn	USER NAME =	DESIGNED - PSA	REvised -	CITY OF HAVANA - BROADWAY STREET				F.A. RTE.	SECTION	COUNTY	TOTAL SHEETS	SHEET NO.
		DRAWN - JTC	REvised -	PLAN & PROFILE				05-00035-00-SS	MASON	60	13	
		CHECKED - ERB	REvised -	SCALE: 1" = 20'				ILLINOIS FED. AID PROJECT		CONTRACT NO. 93502		
		DATE - 09/29/09	REvised -	SHEET NO. OF SHEETS STA. 10+37 TO STA. 14+50								

STATE OF ILLINOIS
DEPARTMENT OF TRANSPORTATION

Farnsworth GROUP

7707 NORTH KNOLVILLE AVENUE, SUITE 200, PEBORIA, ILLINOIS 61604
(309)689-3888 / (309)689-3820 FAX
www.f-c.com