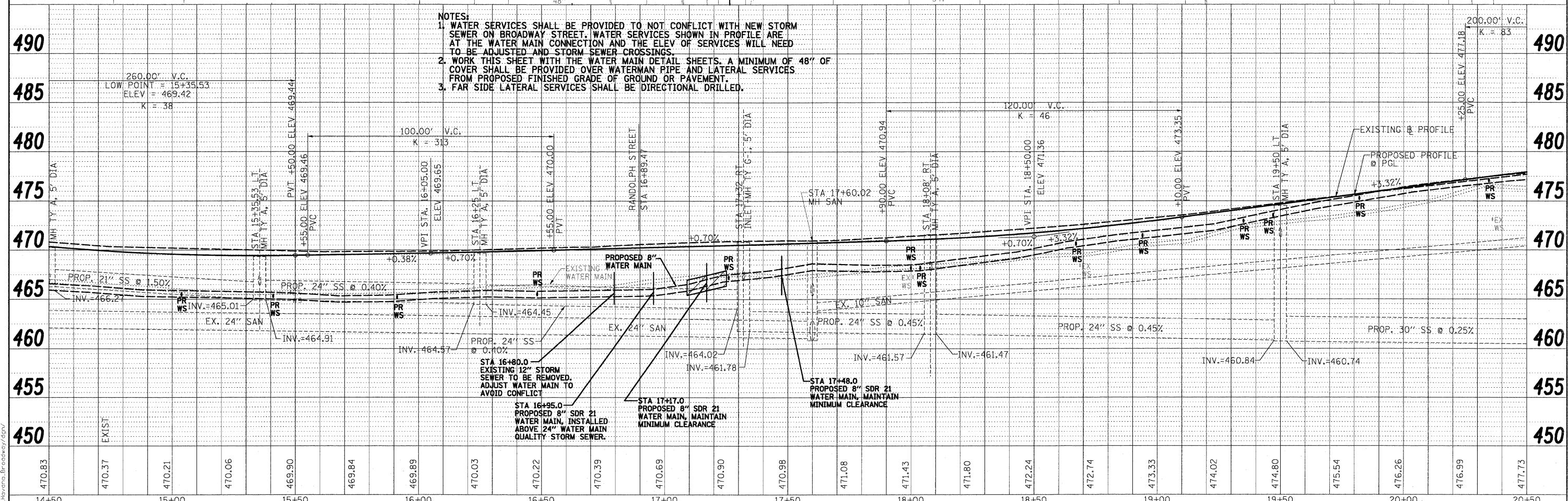
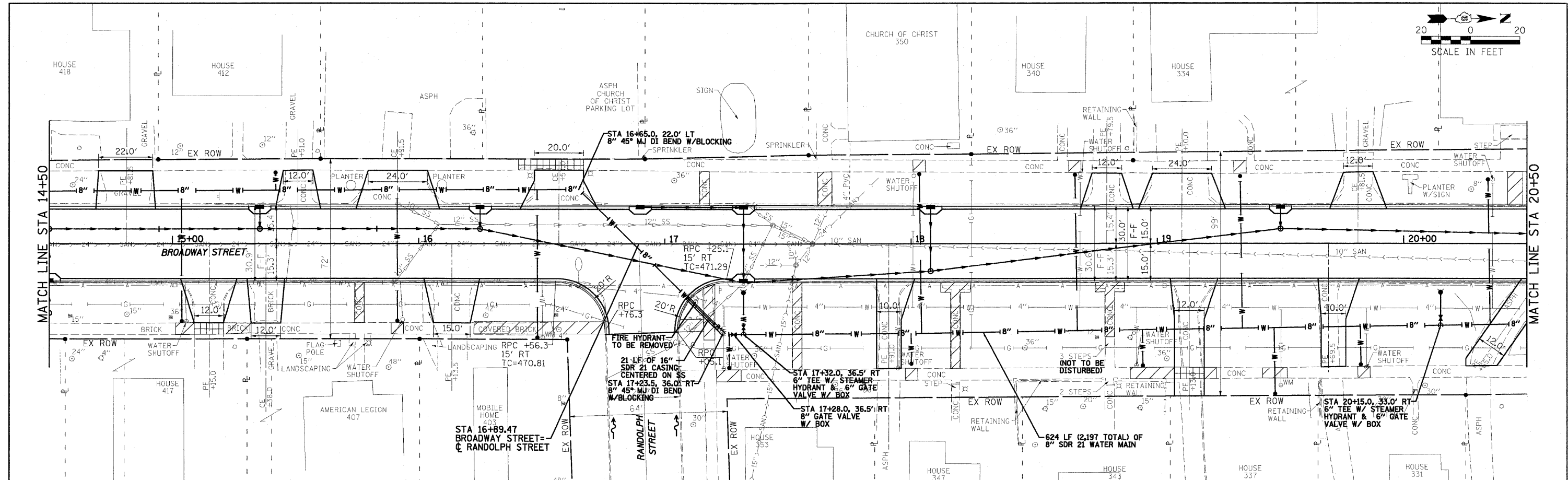




PLAN	SURVEYED	DATE
NOTE BOOK	ALIGNED	
NO.	CHECKED	
	FILE NAME	
	NO.	

PROFILE	SURVEYED	DATE
NOTE BOOK	GRADES CHECKED	
NO.	STRUCTURE NOTATIONS	
	NO.	



- NOTES:**
1. WATER SERVICES SHALL BE PROVIDED TO NOT CONFLICT WITH NEW STORM SEWER ON BROADWAY STREET. WATER SERVICES SHOWN IN PROFILE ARE AT THE WATER MAIN CONNECTION AND THE ELEV. OF SERVICES WILL NEED TO BE ADJUSTED AND STORM SEWER CROSSINGS.
 2. WORK THIS SHEET WITH THE WATER MAIN DETAIL SHEETS. A MINIMUM OF 48" OF COVER SHALL BE PROVIDED OVER WATER MAIN PIPE AND LATERAL SERVICES FROM PROPOSED FINISHED GRADE OF GROUND OR PAVEMENT.
 3. FAR SIDE LATERAL SERVICES SHALL BE DIRECTIONAL DRILLED.

0081364.WATERMAIN.dgn 10:45:44 AM
 9/28/2009 08:36:44 AM
 P:\2009\081364 - Havana\BROADWAY.dgn

FILE NAME = 0081364.WATERMAIN.dgn	USER NAME =	DESIGNED - CSV	REVISED -	STATE OF ILLINOIS DEPARTMENT OF TRANSPORTATION	CITY OF HAVANA - BROADWAY STREET WATER MAIN PLAN & PROFILE	F.A. RTE.	SECTION	COUNTY	TOTAL SHEETS	SHEET NO.
PLOT SCALE =	CHECKED - RBH	REVISED -	REVISED -			05-00035-00-SS	MASON	60	22	
PLOT DATE = 9/28/2009 10:45:44 AM	DATE - 09/29/09	REVISED -	REVISED -			CONTRACT NO. 93502				
						SCALE: 1" = 20'	SHEET NO. OF SHEETS	STA. 14+50 TO STA. 20+50	FED. ROAD DIST. NO.	ILLINOIS FED. AID PROJECT