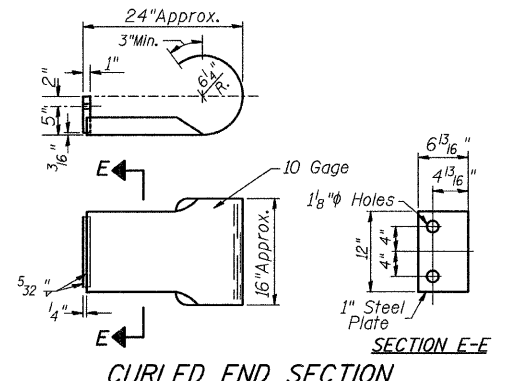
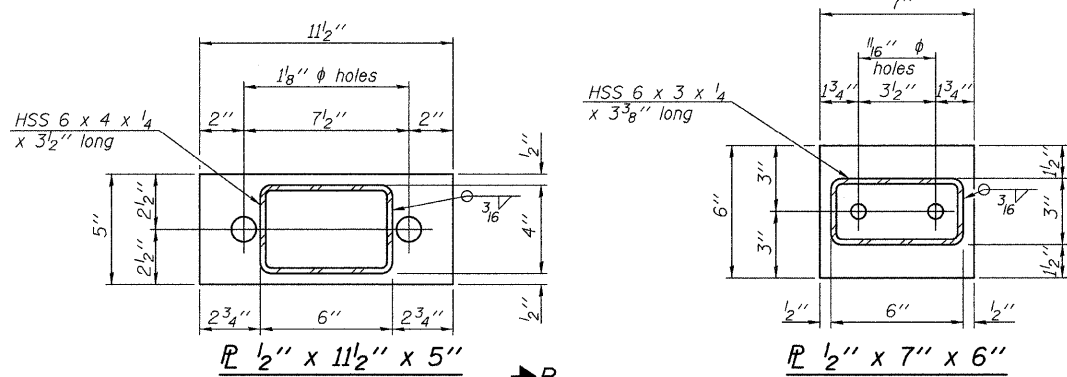
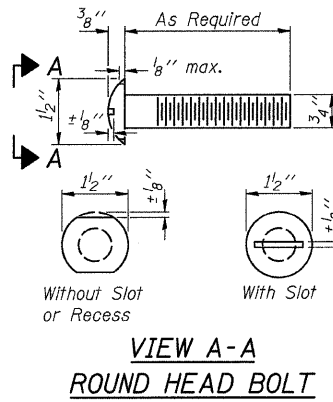


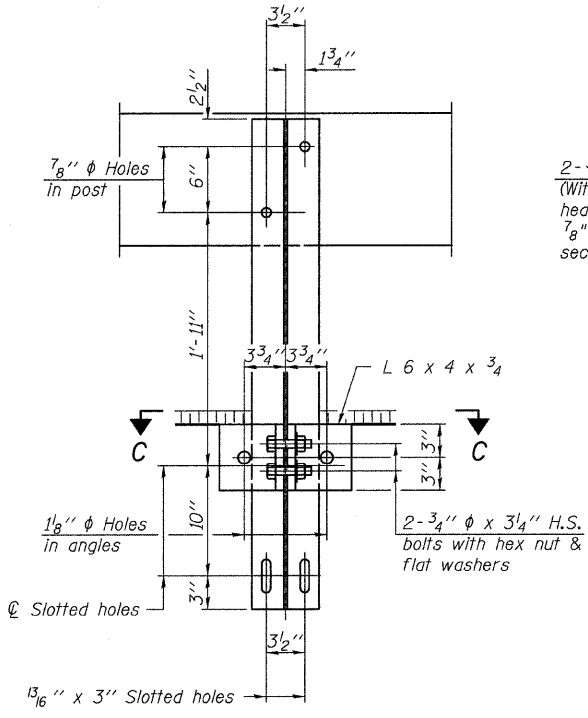
FOR RAIL POST SPACING SEE SH.#7 OF 10



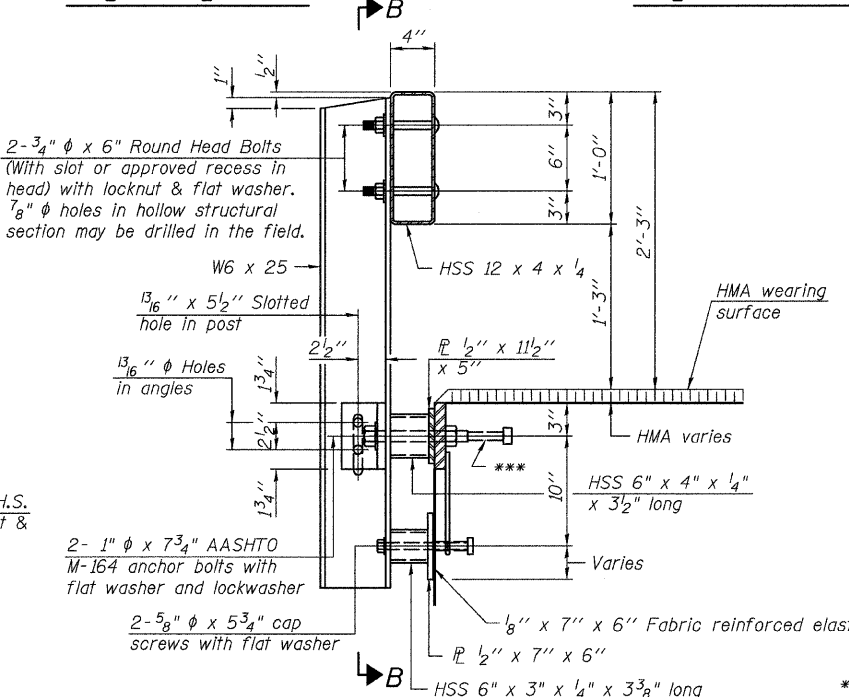
(2 Req'd) Cost Included with Steel Railing, Type S-1. Terminal Markers - Direct Applied shall be placed on end of each Curled End Section. (S.W. & N.E. Corners)

NOTES

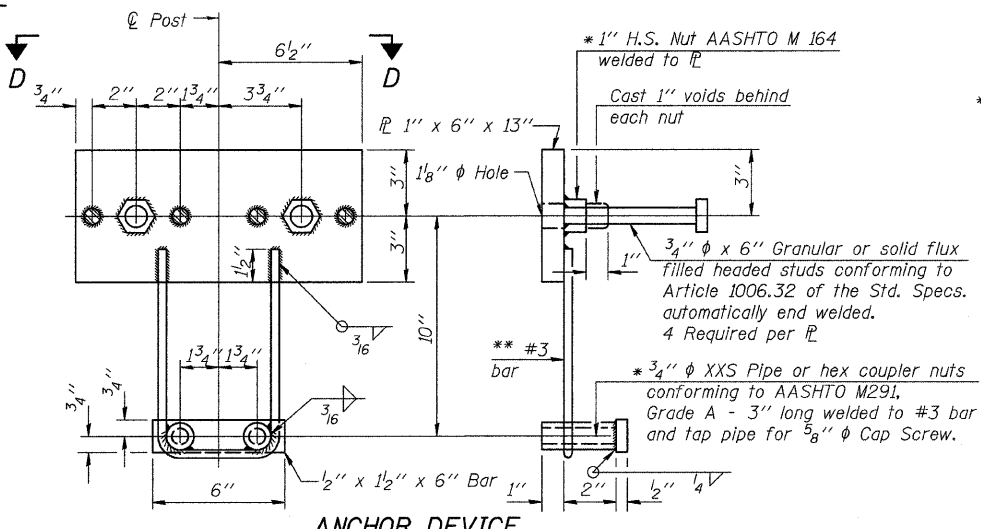
All field drilled holes shall be coated with an approved zinc rich paint before erection. For multi-span bridges, sufficient 1/4" x 6" x 1'-2" galvanized steel shims shall be provided to align rail between adjacent spans. Cost included with Steel Railing, Type S-1. All steel rail elements shall be galvanized according to Article 509.05 of the Standard Specifications. The studs of the anchor devices shall be placed below the top reinforcement bars and the outermost longitudinal reinforcement bar shall be placed directly above the studs of the rail post anchor device.



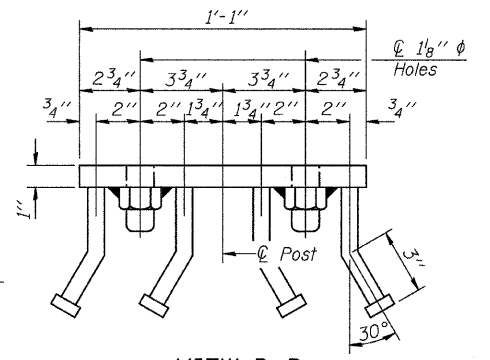
SECTION B-B



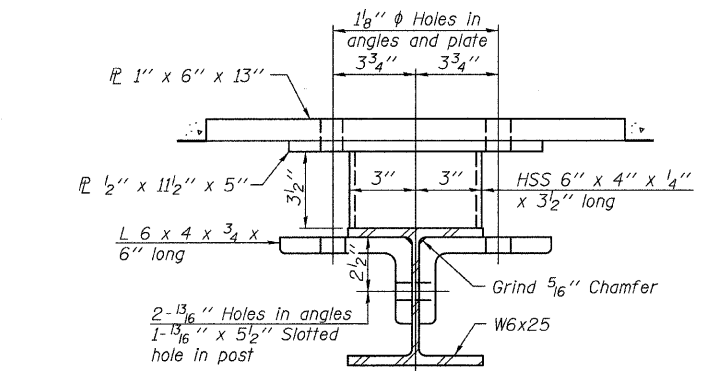
SECTION AT RAILING POST



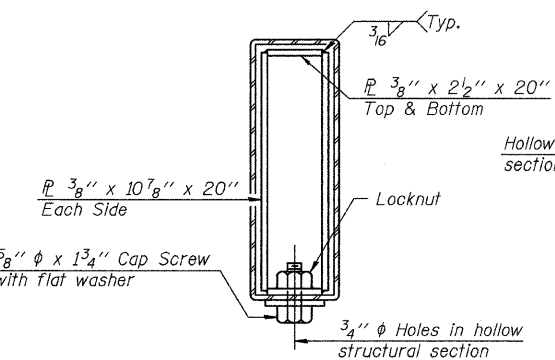
ANCHOR DEVICE



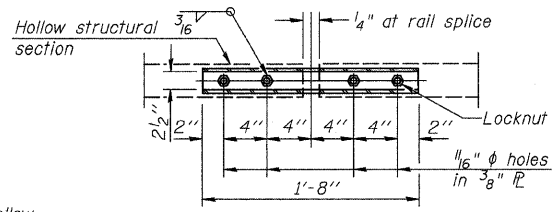
VIEW D-D



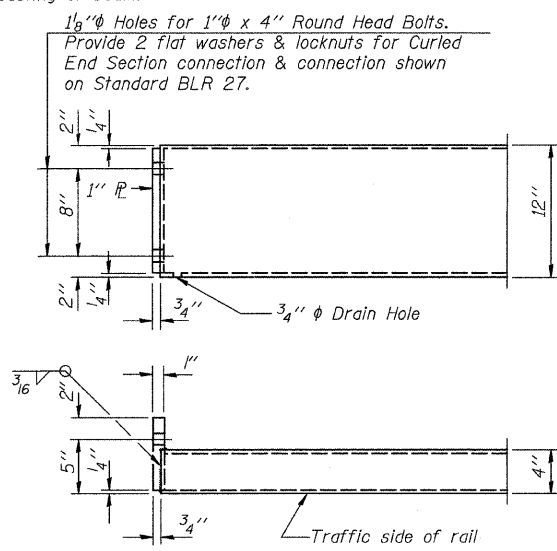
SECTION C-C



SECTIONS AT RAIL SPLICE



PLAN-BOTT. SPLICE R TYPICAL



END OF RAIL DETAILS

BILL OF MATERIAL

Item	Unit	Quantity
Steel Railing, Type S-1	FOOT	290

**STEEL RAILING, TYPE S-1
MASON COUNTY
SECTION 07-00032-01-BR
C.H. 3 OVER QUIVER CREEK**

SHEET NO. 6	ROUTE NO.	SECTION	COUNTY	TOTAL SHEETS	SHEET NO.
	CH 3	07-00032-01-BR	MASON	21	12
10 SHEETS	S.N. 063-3011		CONTRACT NO. 99505		
	FED. ROAD DIST. NO. 7	ILLINOIS	FED. AID PROJECT BRS-0568(102)		