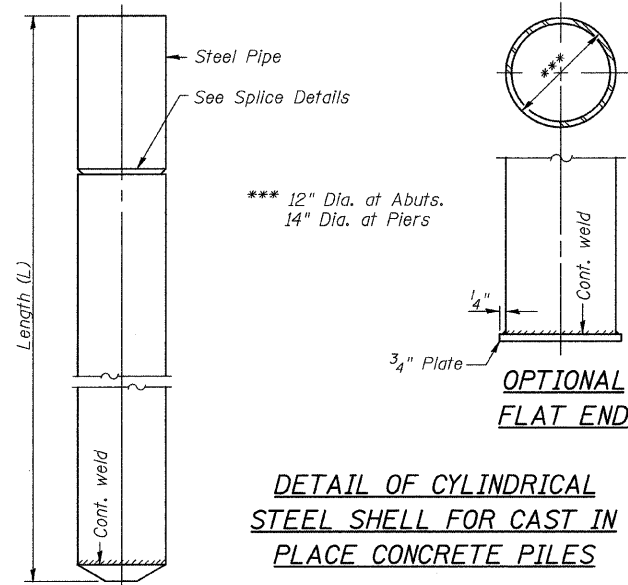
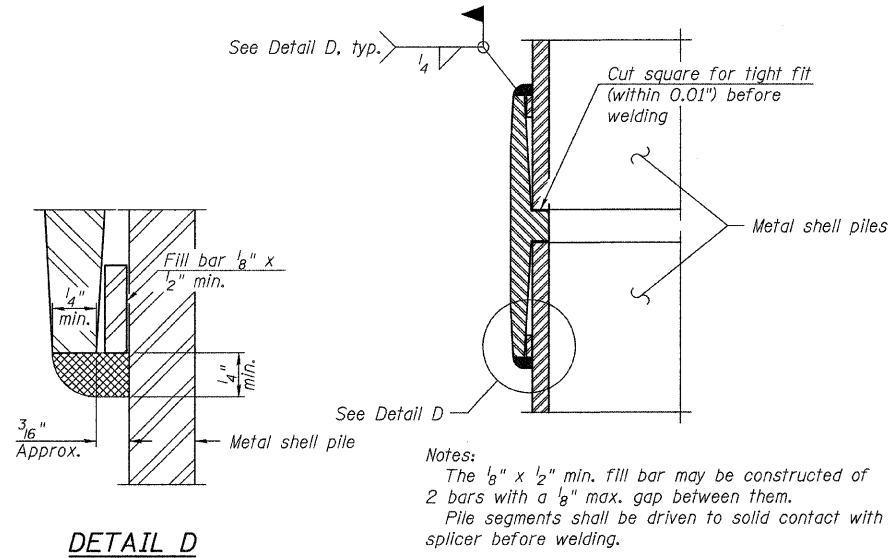
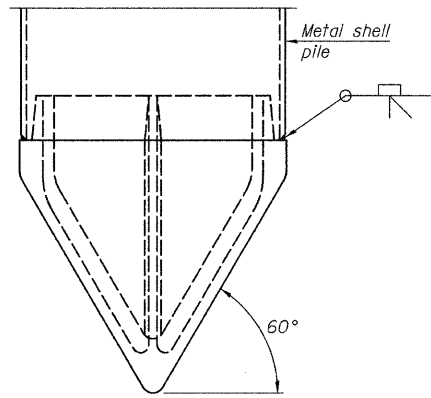


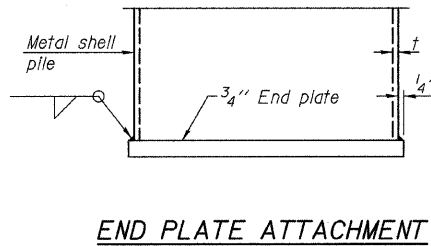
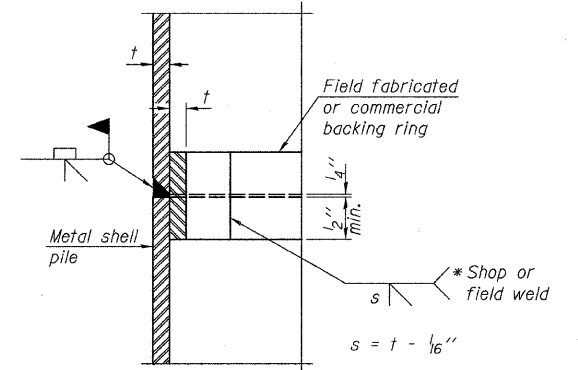
Notes: Driving and bearing ends of pipe shall be cut square. The thickness of the shells shall be 0.25 inches for 12" piles and 0.312 inches for 14" piles with a tolerance of 5%. The shells shall be according to Article 1006.05(a) of the Standard Specifications, and shall be ASTM A252 Grade 3.



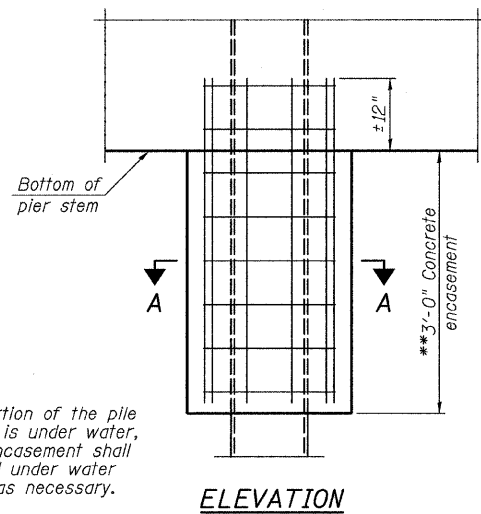
METAL SHELL PILE SHOE ATTACHMENT
(See Note E)



COMPLETE PENETRATION WELD SPLICE
* Field fabricated backing ring may be made from pile shell by removing segment to allow reducing circumference and vertically rejoin with partial joint penetration weld.

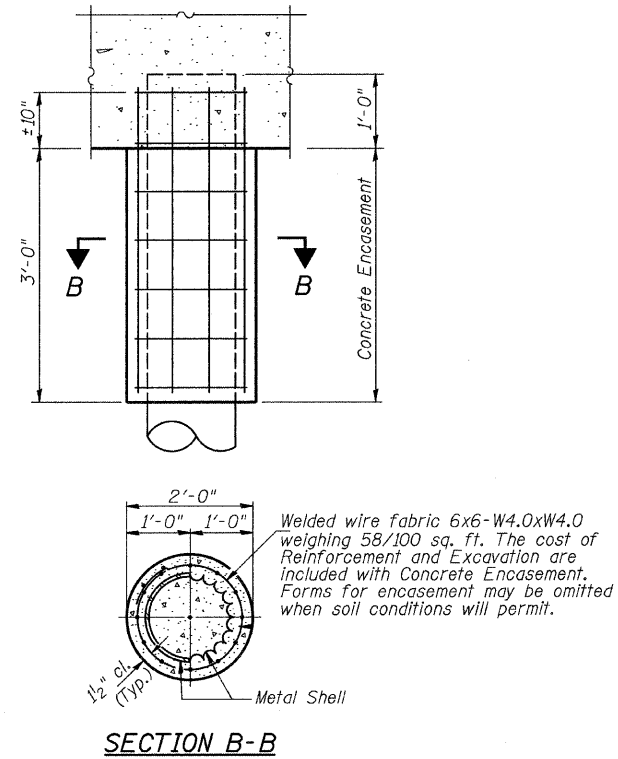
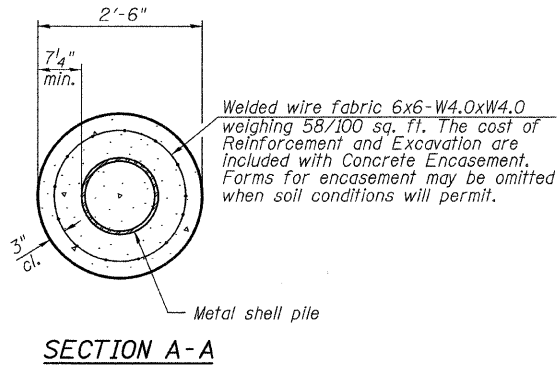


Note E:
When called for on the plans, the Contractor shall furnish metal shell pile shoes consisting of a single piece conical pile point as shown. The pile shoes shall be cast in one piece steel according to either ASTM A 148 Grade 90-60 or AASHTO M 103 Grade 65-35 and shall provide full bearing over the full circumference of the metal shell pile. The pile shoe shall have tapered leads to assure proper alignment and fitting and shall be secured to the pile with a circumferential weld.

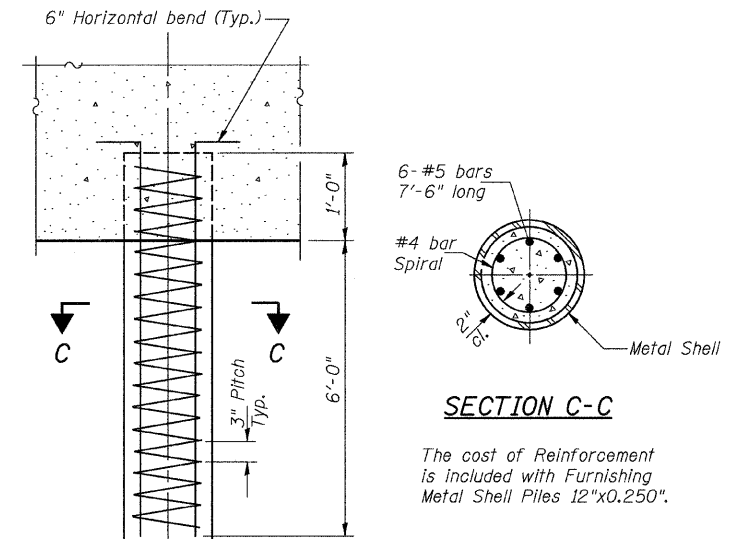


** If a portion of the pile encasement is under water, Concrete Encasement shall be tremmled under water into forms as necessary.

DETAIL OF PROTECTION FOR METAL SHELLS AT PIERS



DETAIL OF METAL SHELL PILE ENCASEMENT AT ABUTMENTS



DETAIL OF REINFORCEMENT FOR METAL SHELLS AT ABUTMENTS

METAL SHELL PILE DETAILS
MASON COUNTY
SECTION 07-00032-01-BR
C.H. 3 OVER QUIVER CREEK

SHEET NO.	ROUTE NO.	SECTION	COUNTY	TOTAL SHEETS	SHEET NO.
10 SHEETS	CH 3	07-00032-01-BR	MASON	21	16
S.N. 063-3011			CONTRACT NO. 93505		
FED. ROAD DIST. NO. 7 ILLINOIS			FED. AID PROJECT BRS-0568(102)		