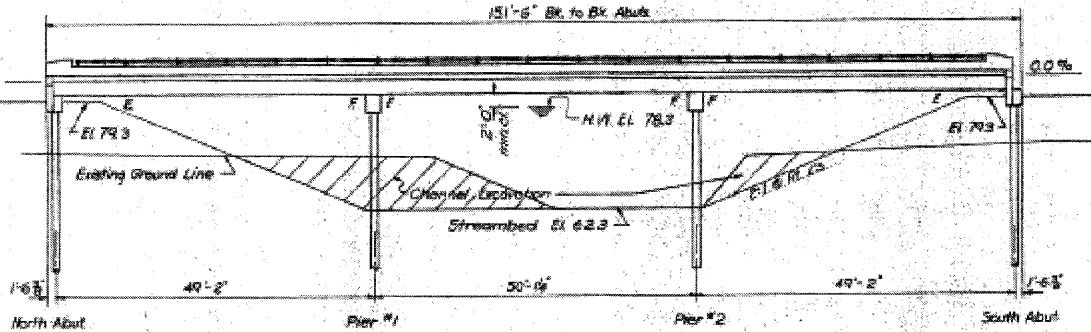


STATE OF ILLINOIS
DEPARTMENT OF TRANSPORTATION

PROJECT NO.	1008	SANGAMON	19	8
DATE	10-1-61			

SHEET 1 OF 4

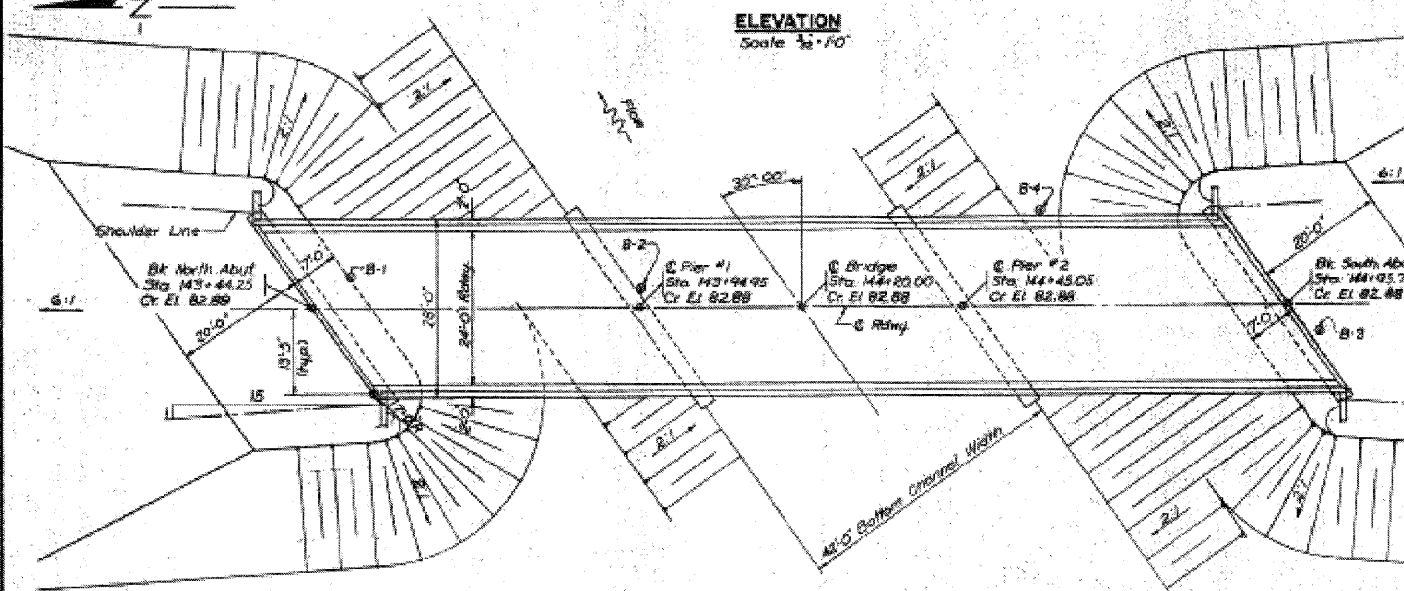
Bk. 11 - Spike in 50' Dia
11' Rt. Sta. 144+60 El. 77.22
Exist. Structure - Steel pony
truss, 1 span 60' 14"
rdwy., timber floor.
Substructure - Closed conc.
abutments.
Contractor shall remove
existing structure after
proposed bridge is
completed.
No salvage.



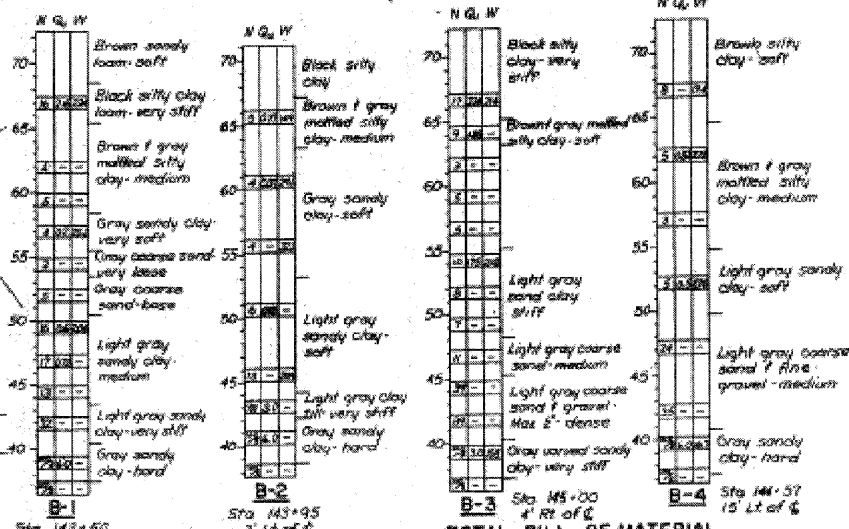
ELEVATION
Scale: 1/2" = 1'-0"

GENERAL NOTES

Class I Concrete shall be used in the pier caps, the abutments and the curbs and parapets.
The aggregate for the Class I Concrete used in the parapets and handrail and posts, shall be free from chert, flint, ironite, lignite, and soft sandstone.
Embankments shall be constructed to the elevation shown in accordance with Sec. 16 of the Standard Specifications before the abutment piles are driven.
Holes for the abutment piles shall be precored in accordance with Article 60.9(c) of the Standard Specifications.
The Contractor shall drive two (2) test piles before ordering the remainder of the piles. One timber test pile shall be driven near the North Abutment. One precast concrete test pile shall be driven, in a permanent location, in Pier #2.



PLAN
Scale: 3/32" = 1'-0"



TOTAL BILL OF MATERIAL

Item	Super	Sub	Total
Precast Prestressed Concrete	4050	—	4050
Bridge Deck	36.3	38.5	74.8
Class I Concrete	—	—	—
Reinforcement Bars	2580	3170	5750
Aluminum Handrail	264	—	264
Name Plates	—	—	—
Precast Piles	—	600	600
Precast Concrete Piles	—	507	507
Test Piles (Timber)	—	—	—
Test Piles (Precast Concrete)	—	—	—
Removal of Existing Structures	—	—	—
Bituminous Concrete Surface	—	—	—
Subbase 2:1	44	—	44

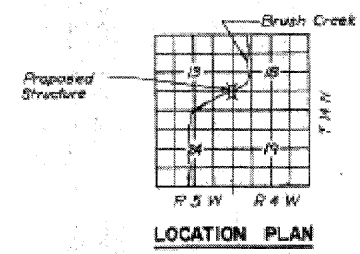
N - Standard Penetration Test
Blows per ft to drive 2" O.D.
Split Spoon Sampler 12"
with 140# hammer falling 30"
Q - Unconfined Compressive
Strength - Tons/Sq Ft
W - Water Content - percentage
of oven dry weight.

DESIGN STRESSES

f_c = 2000 psi (Super)
f_c = 1400 psi (Sub)
f_s = 20,000 psi (Reinf.)
f_s = 160,000 psi (Prestress Cables)
n = 10

WATERWAY INFORMATION

Drainage Area 27.850 Acres
Required Opening (15 yr) 950 Sq Ft
Present Opening 470 Sq Ft
Proposed Opening 950 Sq Ft
below El. 78.3



LOCATION PLAN

STATION 144+20
BRUSH CREEK
BUILT 1966
FAS. RT. 1622 SEC. 008
EA. PROJ. 3-1641-N0
LOADING H15-512

LETTERING FOR NAME PLATE
See Std. 2113

GENERAL PLAN & ELEVATION

F.A.S. RT. 1642 (CH. RT. 26) SEC. 100 B
SANGAMON COUNTY
STATION 144+20

HANSON, COLLINS & RICE
CONSULTING ENGINEERS

Loading H15-512-44

**EXISTING PLANS
PAWNEE ROAD (FAS 1622)
OVER BRUSH CREEK**

DESIGNED - CMV
CHECKED - SDS
DRAWN - DLH
CHECKED - CMV

WHKS & CO.
ENGINEERING
7018 KINGSMILL CT.,
SPRINGFIELD, IL
(217) 483-9457
DESIGN FIRM #184001036

SHEET NO. 9	F.A.S. RTE.	SECTION	COUNTY	TOTAL SHEETS	SHEET NO.
	1622	07-00100-00-BR	SANGAMON	16	13
12 SHEETS	S.N. 084-3037		CONTRACT NO. 93506		
	FED. ROAD DIST. NO. - ILLINOIS FED. AID PROJECT				