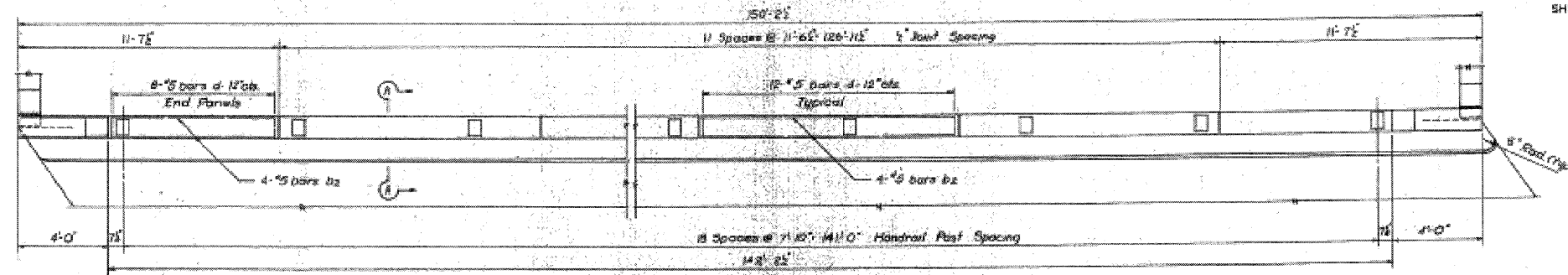


STATE OF ILLINOIS  
DEPARTMENT OF TRANSPORTATION

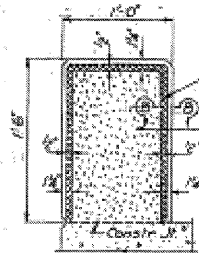
SECTION	NO.	QUANTITY	SCALE	DATE
FAS 1642	100 B	Sangamon	19	10
FED. ROAD DIST. NO. 7	ILLINOIS	FED. AID PROJECT	3	1947-30

SHEET 3 OF 4



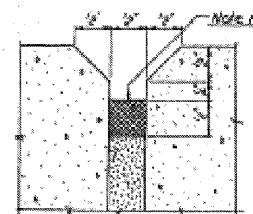
PLAN

Handrail Symm. by rotation thru 180° about C. Rebar.

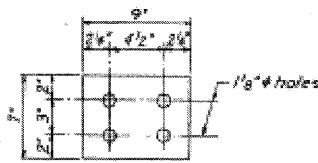


SECTION A-A

Note A: Two component non-staining gray sealing compound with polysulfide liquid polymers - gun grade w/ primer.  
Note B: #5 Prefabricated Conc. Asphalt Joint Filler - A.S.T.M. Designation: D544-49 - Type I Coat incidental.

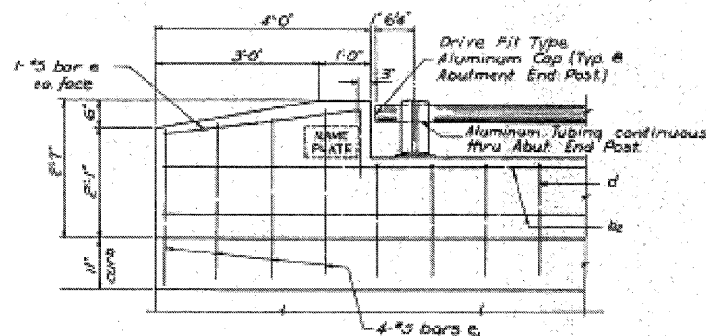


SECTION B-B



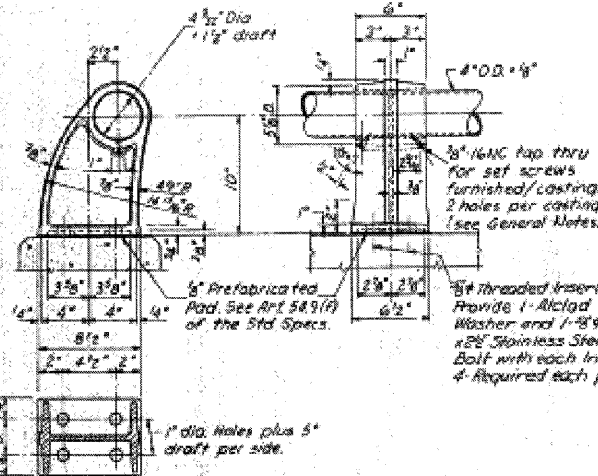
RAIL PAD

7-1/8" x 7" Prefabricated Pad Provide one per post.

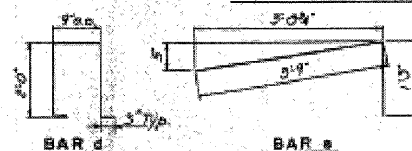


ELEVATION - END POST

Note: Name plate of HW Werner only.



DETAILS - HANDRAIL POST



BAR d

BAR e

BILL OF MATERIAL

BAR	NO.	SIZE	LENGTH	SHAPE
d	104	#5	11'-3"	—
e	288	#5	5'-3"	—
f	0	#5	3'-0"	—
g	32	#5	3'-0"	—

Aluminum Handrail Len. 289

GENERAL NOTES

Aluminum Alloy Extruded Tube shall conform to ASTM Spec. B-235-36T Alloy 6061 condition T-6.  
Aluminum Handrail Post (Permanent Cast) shall conform to ASTM Spec. B-108-54 T Alloy 5070B condition T-6.

Set screws shall be of aluminum conforming to ASTM Specification B-2H Alloy 60-42A, condition T-4.  
Set screws to be tightened at one end of each tubing section only. Turn screw for snug fit at opposite end.

Aluminum Alloy Washers shall be made from sheet conforming to ASTM Spec. B-209-34T Alloy 6061, condition T-4.

All posts shall be placed normal to parapet.  
Class A Concrete & Reinforcement Bars shown on this sheet are billed with Super-structure on Sheet 2.

HANDRAIL

FAS RT 1642 (CH RT 28) SEC 100 B  
SANGAMON COUNTY  
STATION 144+20

HANSON COLLINS & RICE  
ENGINEERS & ARCHITECTS  
CHICAGO, ILL.

DESIGNED BY M.J.C.  
DRAWN BY L.L.M.  
DATE 2-2-57

DESIGNED - CMV
CHECKED - SDS
DRAWN - DLH
CHECKED - CMV

**WHKS & CO.**  
ENGINEERING  
7018 KINGSMILL CT.  
SPRINGFIELD, IL  
(217) 483-9457  
DESIGN FIRM #184001036

EXISTING PLANS  
PAWNEE ROAD (FAS 1622)  
OVER BRUSH CREEK

SHEET NO.	F.A.S. RTE.	SECTION	COUNTY	TOTAL SHEETS	SHEET NO.
11	1622	07-00100-00-BR	SANGAMON	16	15
12 SHEETS	S.N. 084-3037		CONTRACT NO. 93506		
FED. ROAD DIST. NO. - ILLINOIS FED. AID PROJECT					