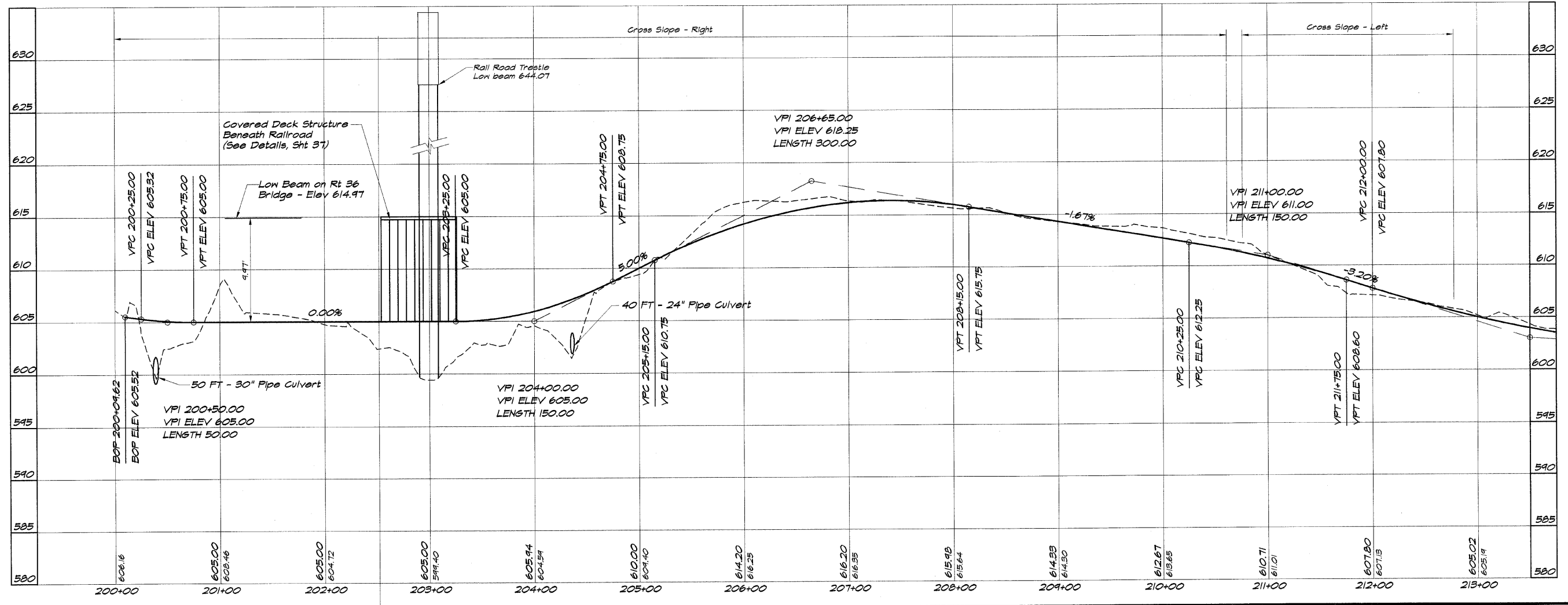
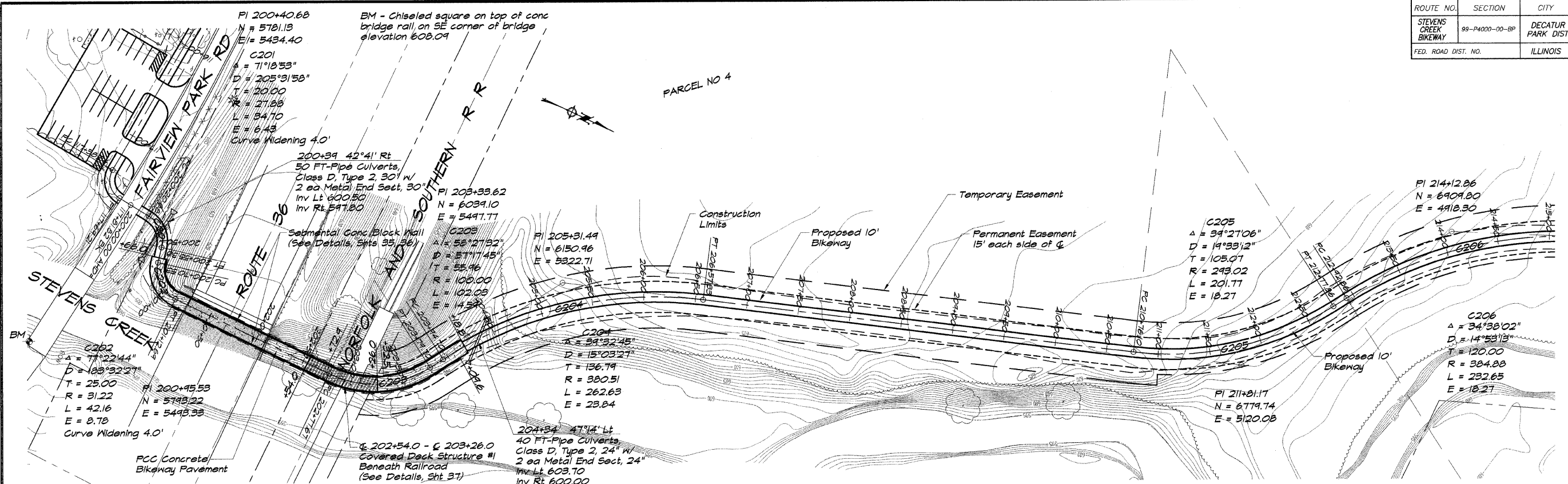


ROUTE NO.	SECTION	CITY	TOTAL SHEETS	SHEET NO.
STEVENS CREEK BIKEWAY	98-P4000-00-BP	DECATUR PARK DIST	145	9
FED. ROAD DIST. NO.		ILLINOIS	PROJECT TE-0007(27)	



BATHURIDGE & ASSOCIATES, INC.
G&B MILANSKI
 Consulting Engineers
 180 SOUTH TAYLORVILLE ROAD
 DECATUR, ILLINOIS 62526
 Phone: 219-426-1100

DESIGNED	SCALE	REVISIONS
DZL	1" = 50'	NO. BY DATE
DRM	DATE	
P	May 2002	
FIELD BOOK	JOB NO.	
XXX	94099	

DECATUR PARK DISTRICT
STEVENS CREEK BIKEWAY - PHASE I
PLAN AND PROFILE
 STATION 200+00.00 TO 213+00.00