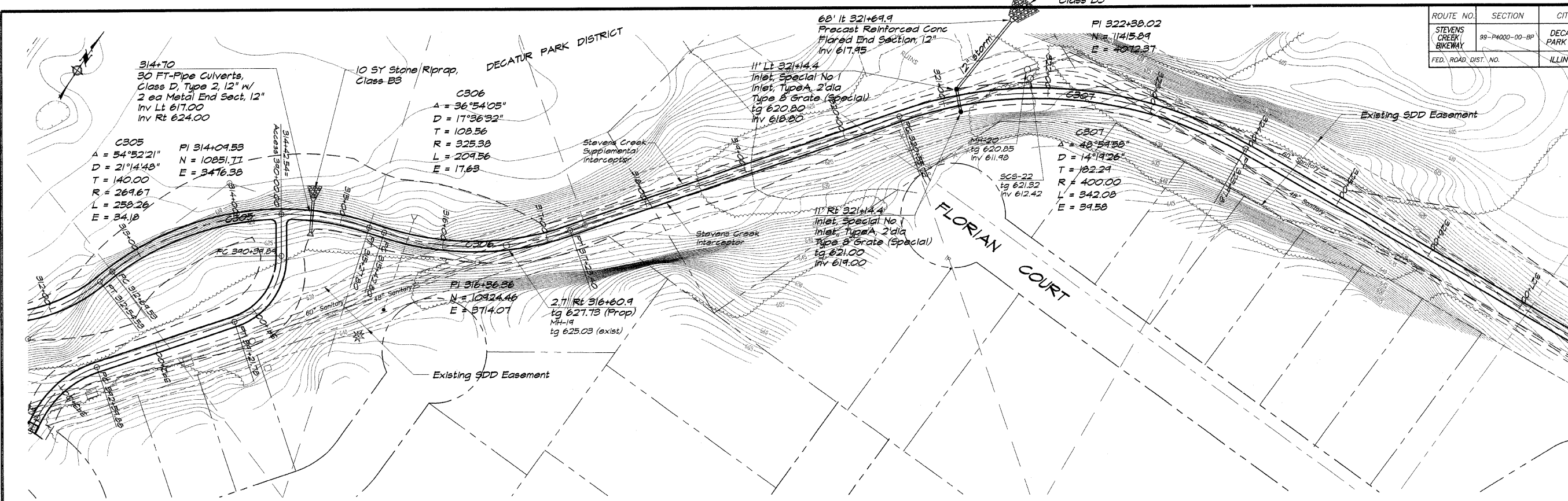
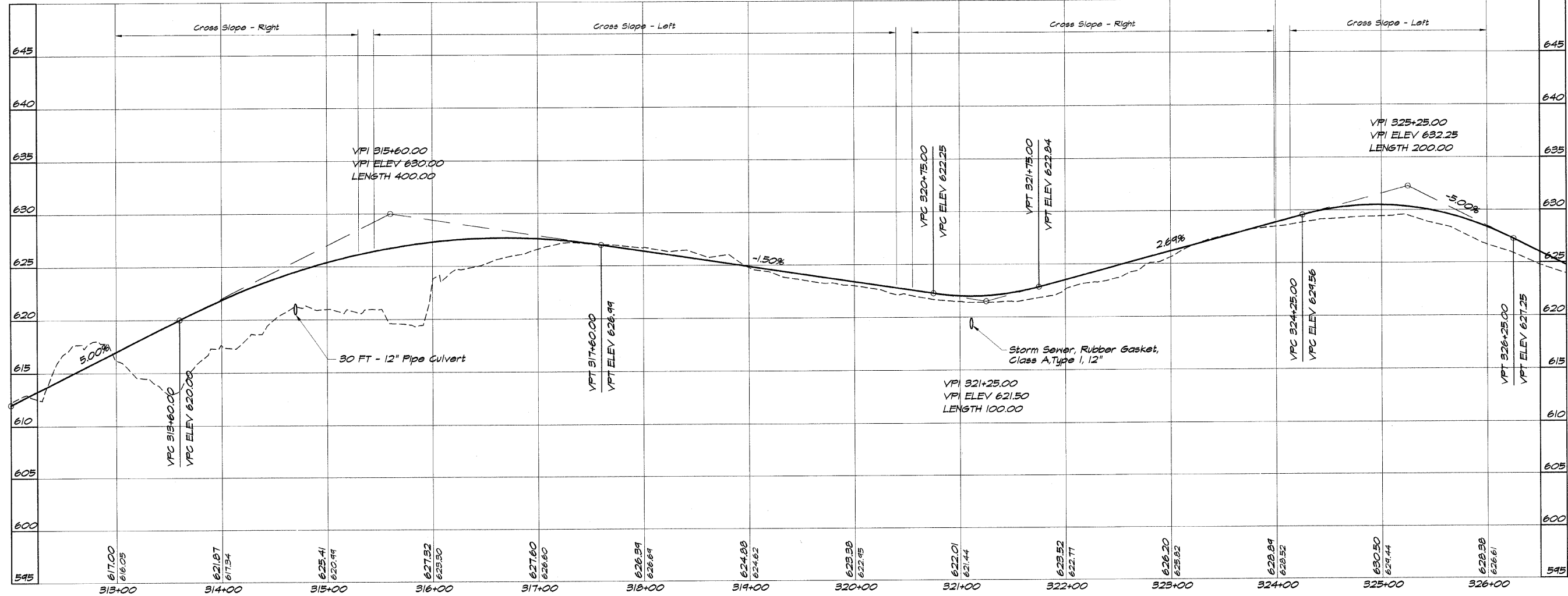


ROUTE NO.	SECTION	CITY	TOTAL SHEETS	SHEET NO.
STEVENS CREEK BIKEWAY	99-P4000-00-BP	DECATUR PARK DIST	145	16
FED. ROAD DIST. NO.		ILLINOIS	PROJECT TE-0007(27)	



BATHURIDGE & ASSOCIATES, INC.
 Consulting Engineers
GHE MILANSKI
 1875 SOUTH TAYLORVILLE ROAD
 DECATUR, ILLINOIS
 Phone: 312-298-1400

DESIGNED	SCALE	REVISIONS
DJA	1" = 50'	NO. BY DATE
PM		
FIELD BOOK	DATE	
XXX	May 2002	
	JOB NO.	
	49099	



DECATUR PARK DISTRICT
STEVENS CREEK BIKEWAY - PHASE I
PLAN AND PROFILE
 STATION 313+00.00 TO 326+00.00