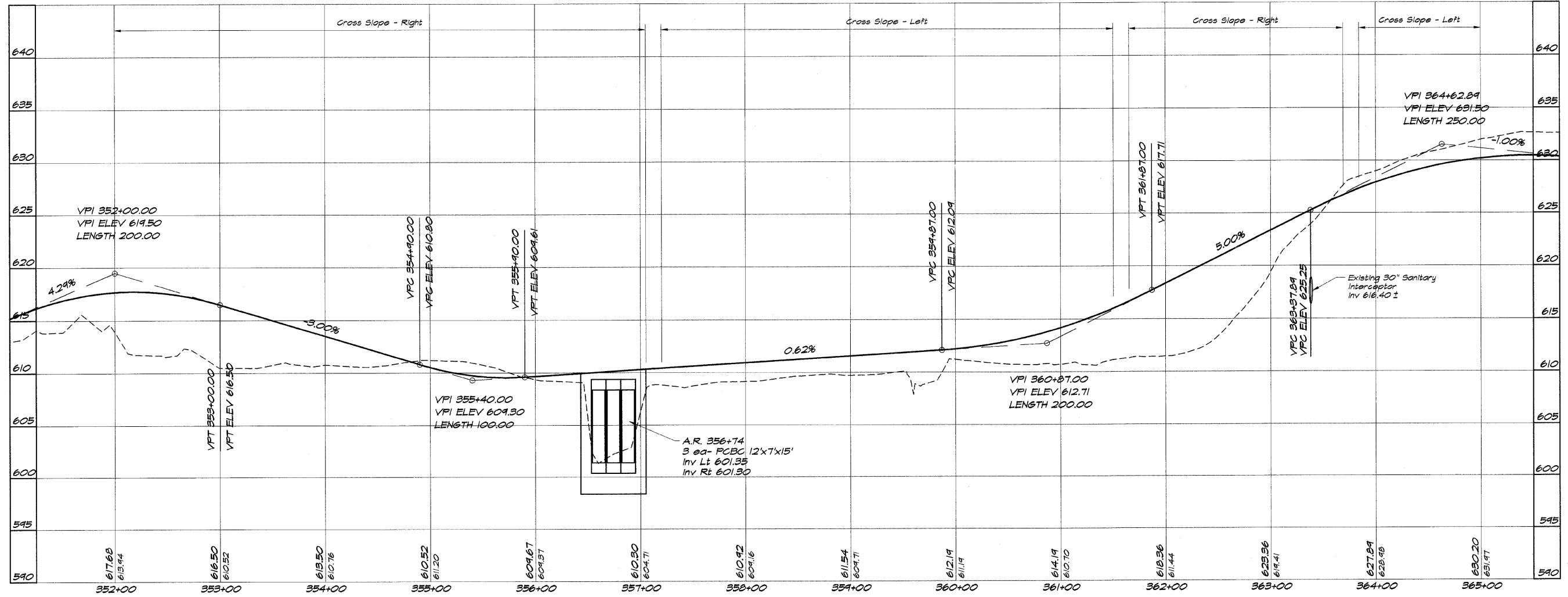
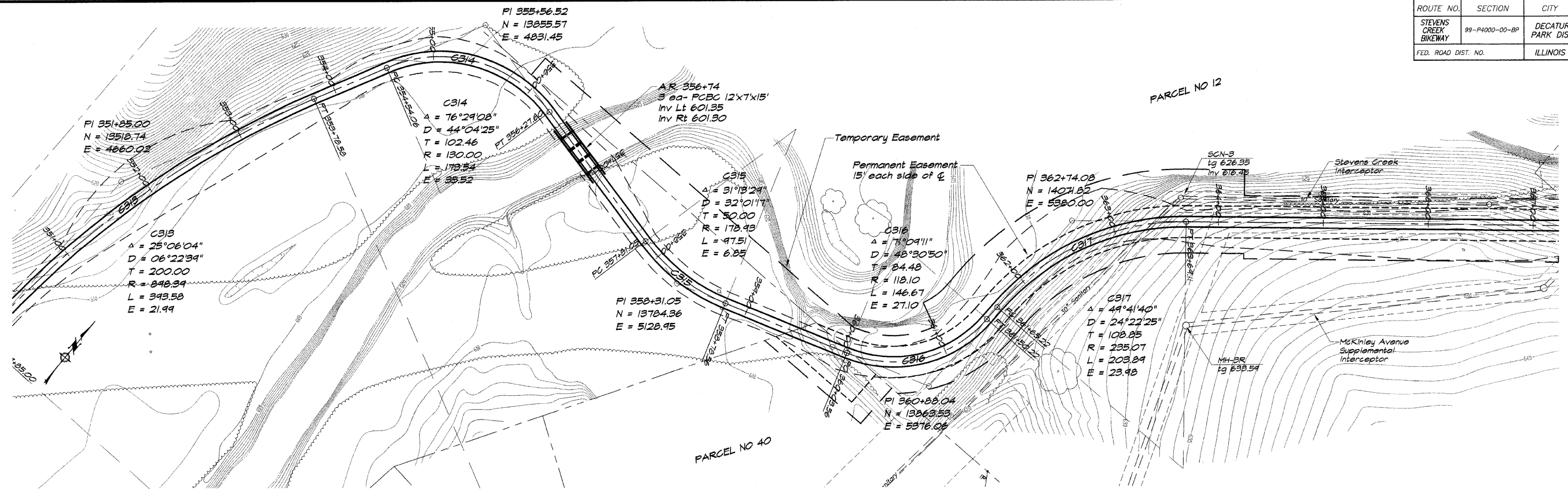


ROUTE NO.	SECTION	CITY	TOTAL SHEETS	SHEET NO.
STEVENS CREEK BIKEWAY	99-P4000-00-BP	DECATUR PARK DIST	145	20
FED. ROAD DIST. NO.	ILLINOIS		PROJECT TE-0007(27)	



**BAINBRIDGE & ASSOCIATES, INC.**  
**GEE MILANSKI**  
 Consulting Engineers  
 1670 SOUTH TAYLORVILLE ROAD  
 DECATUR, ILLINOIS  
 PHONE: 248-1100 FAX: 248-1102

DESIGNED	DRAWN	SCALE	DATE	DATE	DATE
DZ/JW	P m/l/s	1" = 50'	May 2002	May 2002	9/02/04
	XXX				

**DECATUR PARK DISTRICT**  
**STEVENS CREEK BIKEWAY - PHASE I**  
**PLAN AND PROFILE**  
 STATION 352+00.00 TO 365+00.00