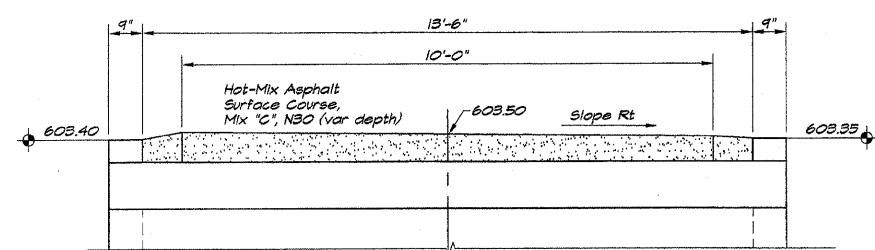
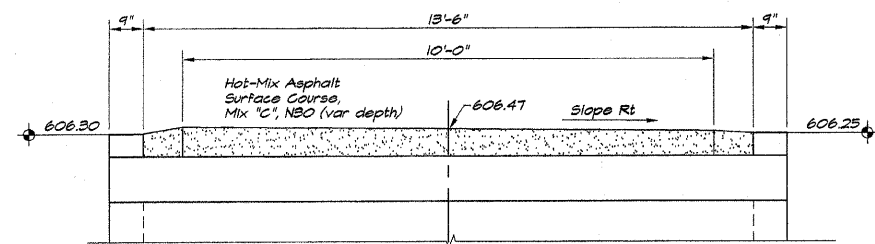


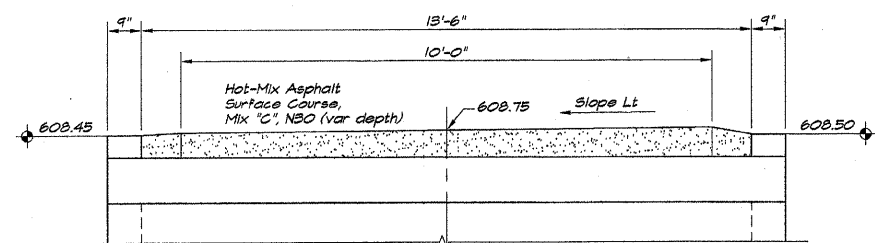
ROUTE NO.	SECTION	CITY	TOTAL SHEETS	SHEET NO.
STEVENS CREEK BIKEWAY	99-P4000-00-BP	DECATUR PARK DIST	145	30
FED. ROAD DIST. NO.		ILLINOIS	PROJECT TE-0007(27)	



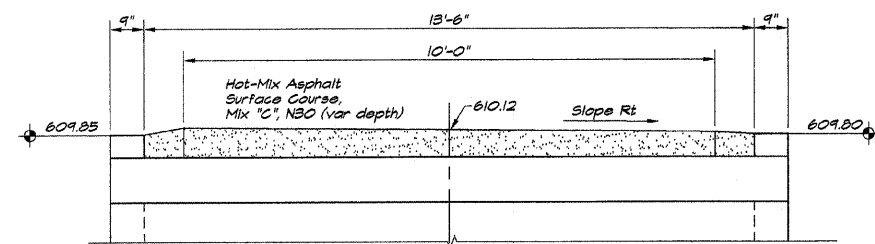
Fill Height < 2'  
A.R. 230+64 PCBC 12'X7'X15' (M27B)



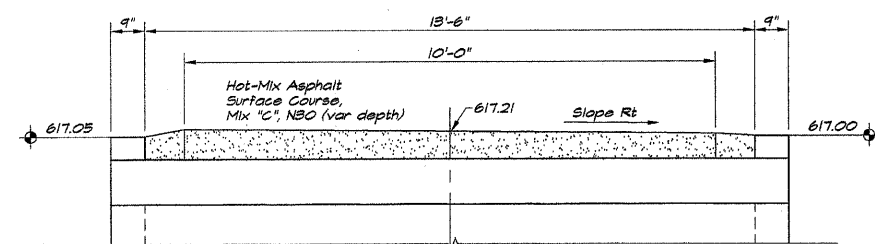
Fill Height < 2'  
A.R. 305+67 PCBC 12'X7'X15' (M27B)



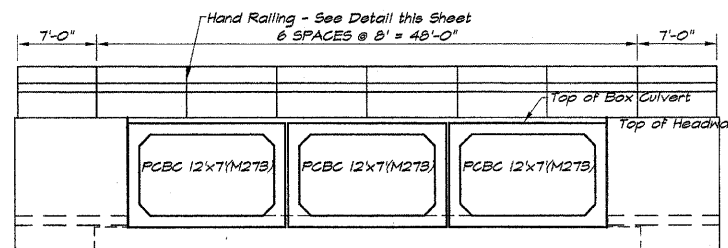
Fill Height < 2'  
A.R. 342+98 PCBC 12'X7'X15' (M27B)



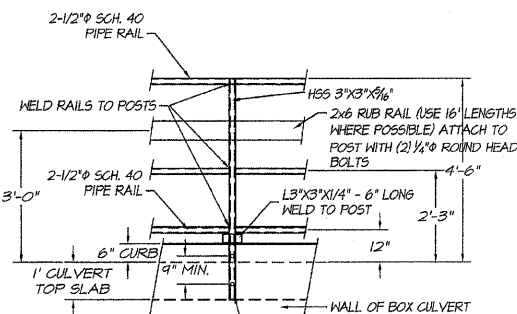
Fill Height < 2'  
A.R. 356+74 PCBC 12'X7'X15' (M27B)



Fill Height < 2'  
A.R. 452+54 PCBC 12'X7'X15' (M27B)

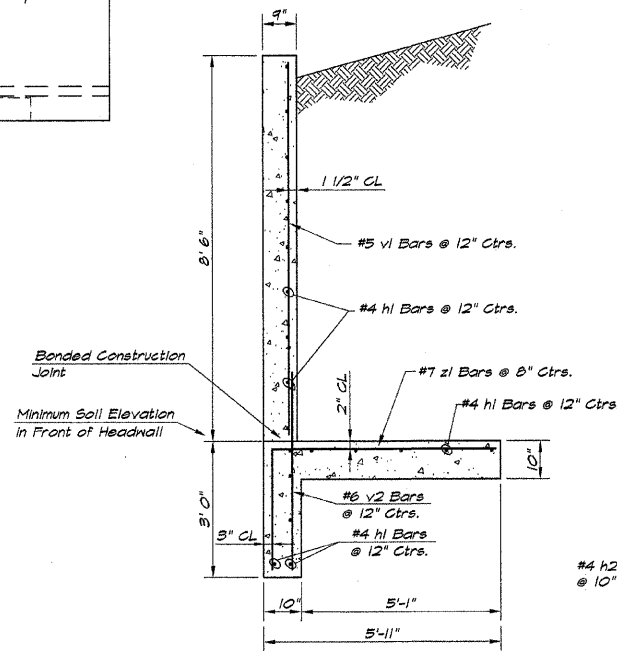


CULVERT HEADWALL SHOWING RAILING

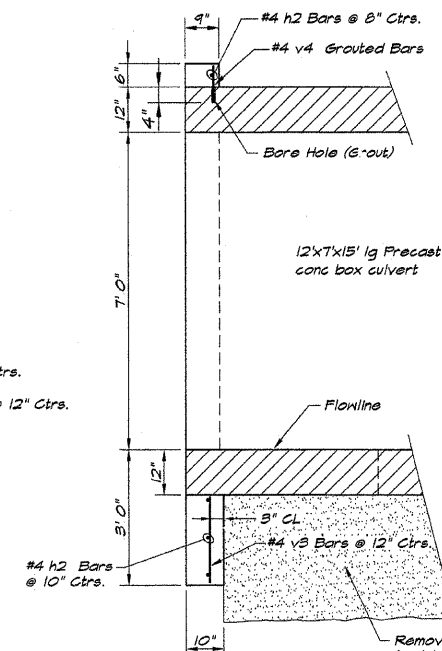


NOTE:  
PIPE WELD DETAILS AND JOINT DETAILS ARE SIMILAR TO HAND RAILING DETAIL FOR BRIDGES.  
(2) 3/8" GALVANIZED ANCHOR RODS (ON EACH POST) PAINT WITH 2 COATS OF ASPHALTIC PAINT. PLACE IN 4" DEEP (MIN) DRILL HOLE AND EPOXY FILL.

HAND RAILING DETAIL - BOX CULVERTS ONLY



TYPICAL HEADWALL SECTION

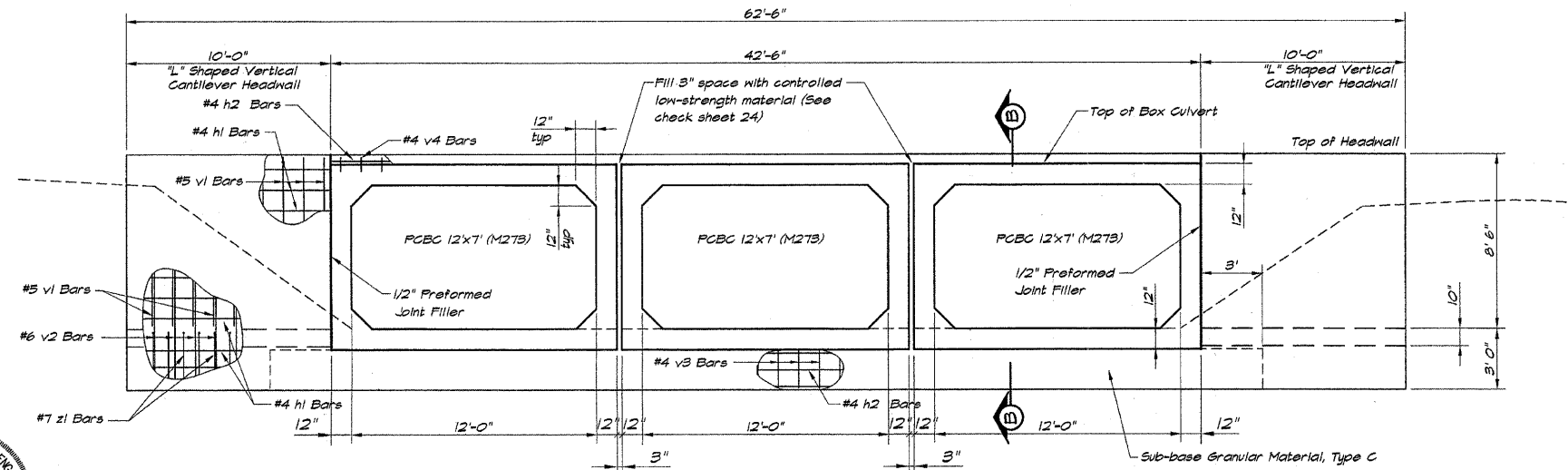
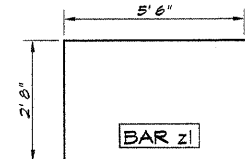


SECTION B

Remove soil to a minimum of \* feet below bottom of box culvert and 3.0 feet beyond side walls. Replace with sub-base granular material, Type C.  
\* AR 230+62 3.0 Ft  
\* AR 305+67 3.0 Ft  
\* AR 342+98 2.0 Ft  
\* AR 356+72 2.0 Ft  
\* AR 452+52 2.0 Ft

BAR SIZE	NUMBER	LENGTH	SHAPE	WEIGHT
#4 H1	50	9'-9"		247
#4 H2	4	44'-6"		119
#5 V1	22	8'-3"		189
#6 V2	22	7'-3"		240
#4 V3	43	1'-7"		45
#4 V4	43	8"		19
#7 Z1	52	8'-2"	5'-6"	584
TOTAL WEIGHT				1943 LBS. *
CONCRETE QUANTITY				13.05 CU. YDS. *

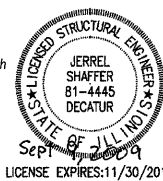
\* EACH HEADWALL



CULVERT HEADWALL

I certify that to the best of my knowledge, information and belief, this bridge design is structurally adequate for the design loading shown on the plans. The design is an economical one for the style of structure and complies with requirements for the current AASHTO standard Specifications for Highway Bridges.

JERREL L. SHAFER  
ILLINOIS STRUCTURAL ENGINEER NO. 01-4445



BATHURIDGE & ASSOCIATES, INC.  
Consulting Engineers  
1875 SOUTH WINDSORLE ROAD  
DECATUR, ILLINOIS 62521  
Phone: 217-282-1588

REVISIONS	NO.	BY	DATE

DESIGNED: DLM  
DRAWN: P. Mills  
FIELD BOOK: XXXX  
SCALE: 1/4" = 1'-0"  
DATE: May 2002  
JOB NO.: 99099

DECATUR PARK DISTRICT  
STEVENS CREEK BIKEWAY - PHASE I  
BOX CULVERT DETAILS  
STATION 00+00.00 TO 00+00.00