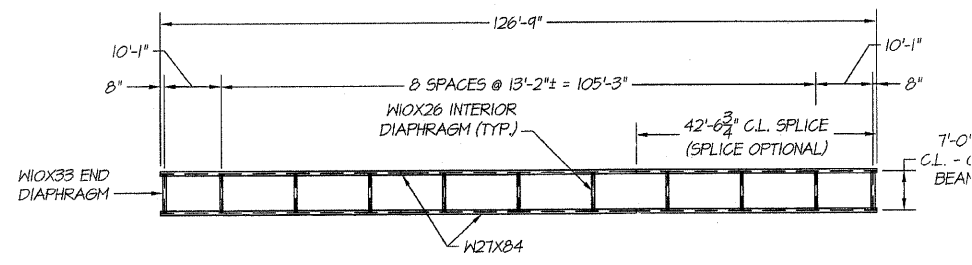
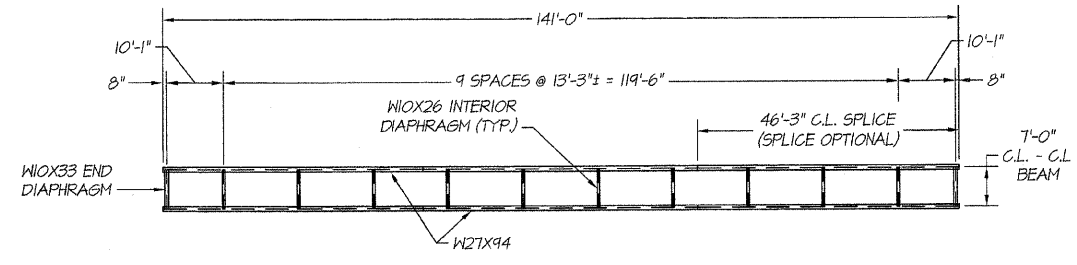


|                       |                |                   |                     |           |
|-----------------------|----------------|-------------------|---------------------|-----------|
| ROUTE NO.             | SECTION        | CITY              | TOTAL SHEETS        | SHEET NO. |
| STEVENS CREEK BIKEWAY | 99-P4000-00-BP | DECATUR PARK DIST | 145                 | 32        |
| FED. ROAD DIST. NO.   |                | ILLINOIS          | PROJECT TE-0007(27) |           |



**STRUCTURAL STEEL PLAN**  
 CENTER STREET BRIDGE  
 FABRICATED BRIDGE NO. 1  
 STA. 257+75 TO 259+00  
 SCALE: 1/16" = 1'



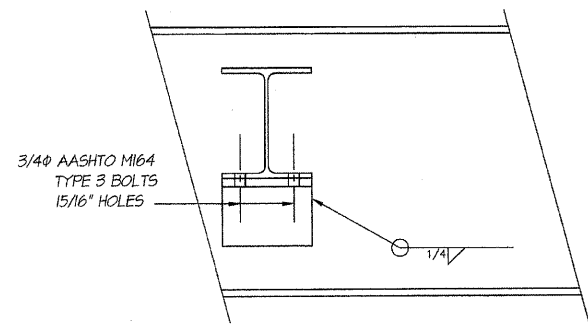
**STRUCTURAL STEEL PLAN**  
 SUMMIT AVENUE BRIDGE  
 FABRICATED BRIDGE NO. 2  
 STA. 375+63 TO 377+03  
 SCALE: 1/16" = 1'

**BILL OF MATERIALS**  
 FABRICATED BRIDGE NO. 1

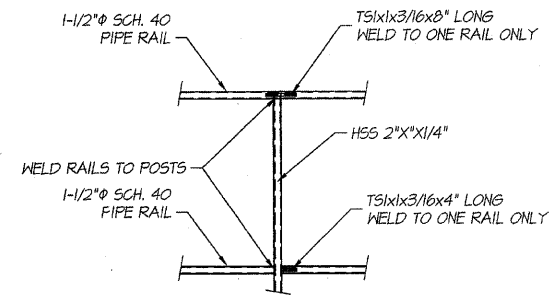
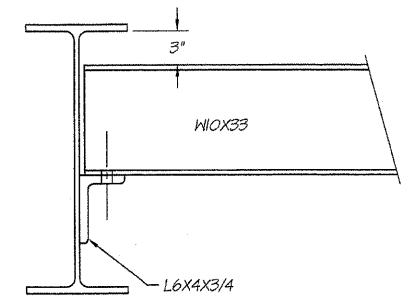
| BAR SIZE                                  | NUMBER | LENGTH | SHAPE | WEIGHT |
|---|--------|--------|-------|--------|
| #4B1                                      | 37     | 27'-0" |       | 667    |
| #4B2                                      | 132    | 10'-0" |       | 882    |
| TOTAL WEIGHT OF REINFORCEMENT = 1549 LBS. |        |        |       |        |
| CONCRETE QUANTITY = 20.6 CU. YDS.         |        |        |       |        |

**BILL OF MATERIALS**  
 FABRICATED BRIDGE NO. 2

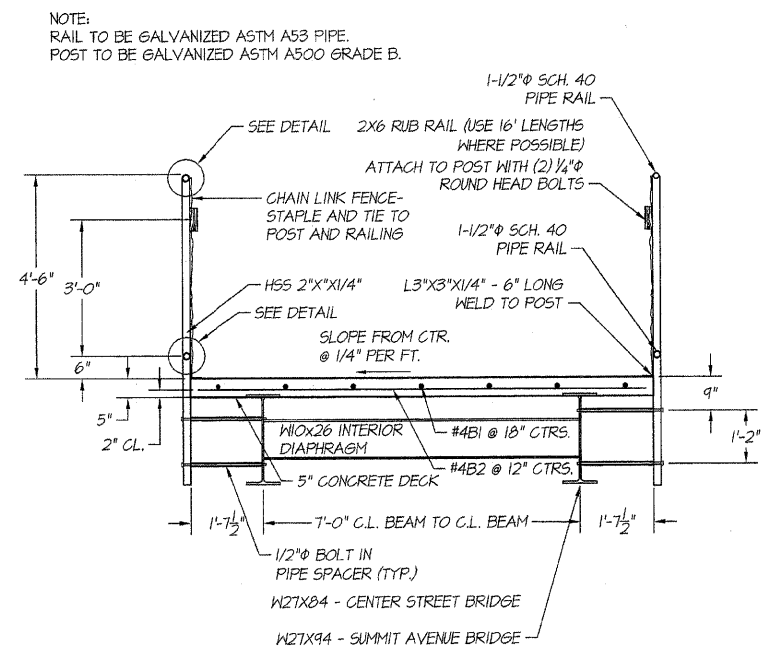
| BAR SIZE                                  | NUMBER | LENGTH | SHAPE | WEIGHT |
|---|--------|--------|-------|--------|
| #4B1                                      | 43     | 27'-0" |       | 776    |
| #4B2                                      | 147    | 10'-0" |       | 982    |
| TOTAL WEIGHT OF REINFORCEMENT = 1758 LBS. |        |        |       |        |
| CONCRETE QUANTITY = 22.5 CU. YDS.         |        |        |       |        |



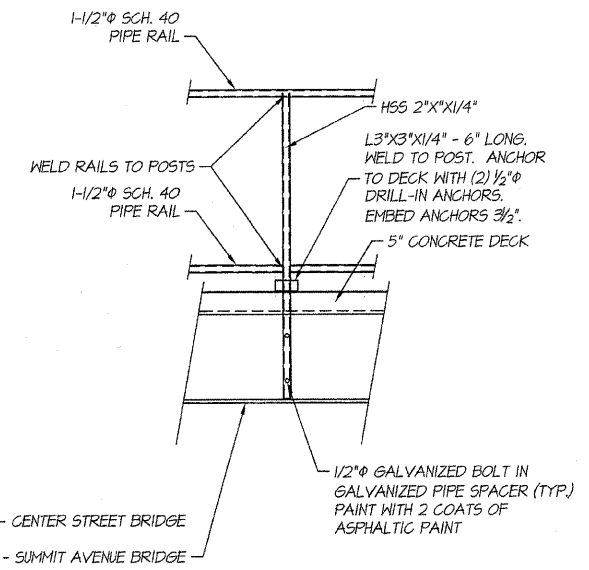
**END DIAPHRAGM**  
 SCALE: 1-1/2" = 1'



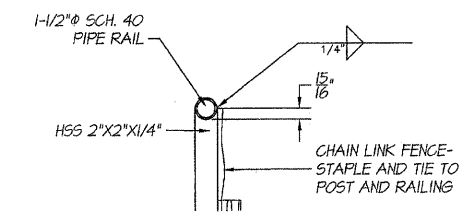
**JOINT DETAIL**  
 SCALE: 1/2" = 1'



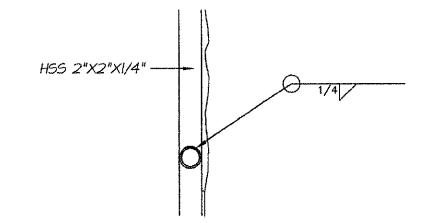
**TYPICAL DECK SECTION**  
 SCALE: 1/2" = 1'



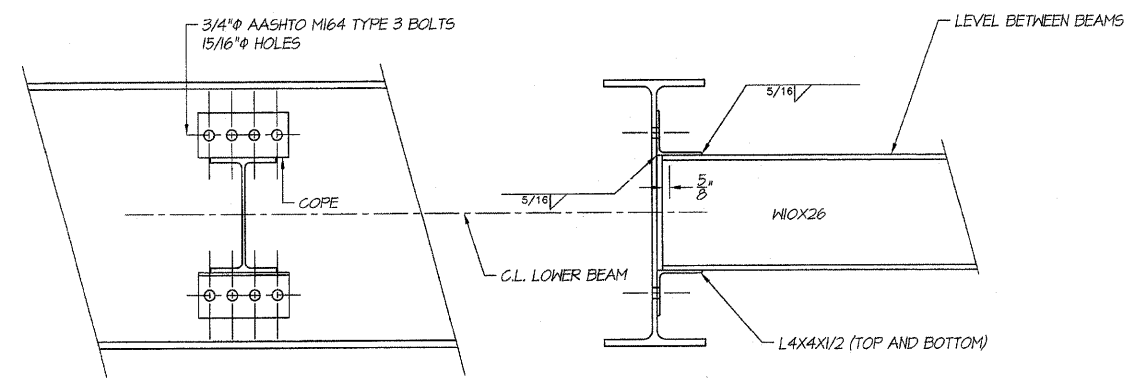
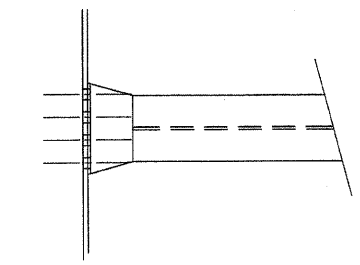
**HAND RAILING DETAIL**  
 SCALE: 1/2" = 1'



**PIPE WELD DETAIL - TOP**  
 SCALE: 1-1/2" = 1'



**PIPE WELD DETAIL - BOTTOM**  
 SCALE: 1-1/2" = 1'



**INTERIOR DIAPHRAGM**  
 SCALE: 1-1/2" = 1'

I certify that to the best of my knowledge, information and belief, this bridge design is structurally adequate for the design loading shown on the plans. The design is an economical one for the style of structure and complies with requirements for the current "AASHTO Standard Specifications for Highway Bridges."

*Jerrel L. Shafer*  
 JERREL L. SHAFFER  
 ILLINOIS STRUCTURAL ENGINEER NO. 01-4445



**BAINBRIDGE & ASSOCIATES, INC.**  
 Consulting Engineers  
 1870 SOUTH WINDSOR ROAD  
 DECATUR, ILLINOIS 62521-1400  
 Phone: 217-282-1400

**REVISIONS**

| NO. | BY | DATE       |
|-----|----|------------|
| 1   | AS | April 2004 |

**DECATUR PARK DISTRICT**  
 STEVENS CREEK BIKEWAY - PHASE I  
 FABRICATED BRIDGE DESIGN  
 DETAILS

**JB ENGINEERS, INC.**  
 CONSULTING ENGINEERS  
 1000 N. WASHINGTON ST., SUITE 200  
 DECATUR, ILLINOIS 62521-1400  
 PHONE: 217-282-1400 FAX: 217-282-1401  
 PROFESSIONAL LICENSE NO. 01-4445 EXPIRES 11/30/2010