

ROUTE NO.	SECTION	CITY	TOTAL SHEETS	SHEET NO.
STEVENS CREEK BIKEWAY	89-P4000-00-BP	DECATUR PARK DIST	145	36
FED. ROAD DIST. NO.	ILLINOIS		PROJECT TE-0007(27)	

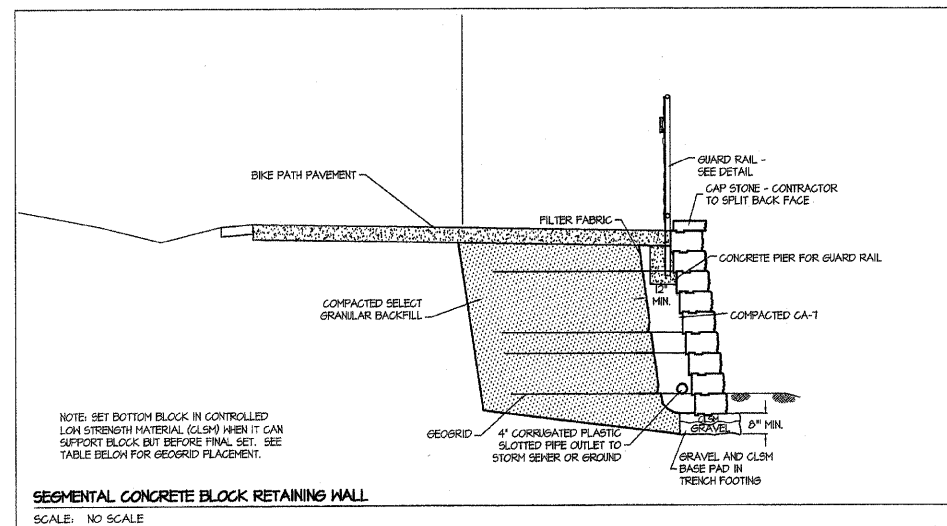
BRAINERD & ASSOCIATES, INC.
GEB MILANSKI
 Consulting Engineers
 180 SOUTH TAYLORVILLE ROAD
 DECATUR, ILLINOIS 62526
 PHONE: 217-282-1200

REVISIONS	NO.	BY	DATE

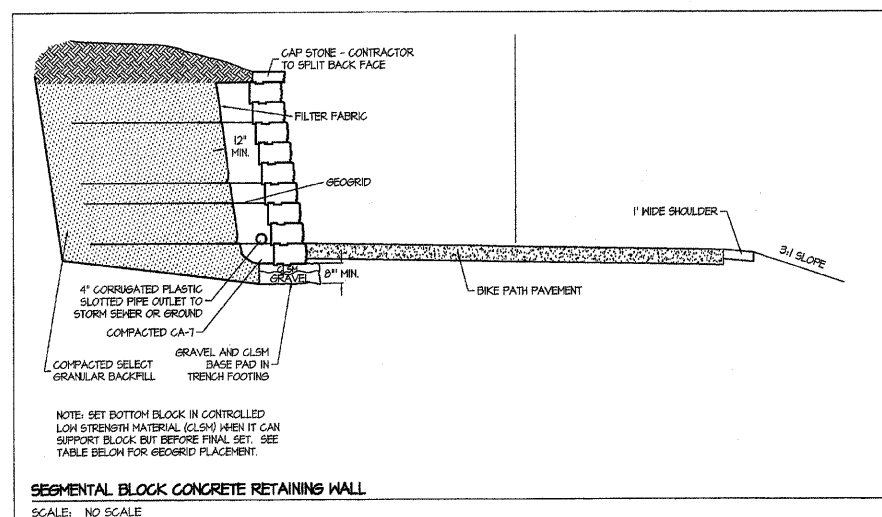
DECATUR PARK DISTRICT
STEVENS CREEK BIKEWAY - PHASE I
SEGMENTAL CONCRETE BLOCK WALL
SECTIONS AND PROFILES

BRINERD & ASSOCIATES, INC.
 CONSULTING ENGINEERS
 180 SOUTH TAYLORVILLE ROAD
 DECATUR, ILLINOIS 62526
 PHONE: 217-282-1200
 FAX: 217-282-1201
 PROFESSIONAL DESIGN FROM 1/24/2009

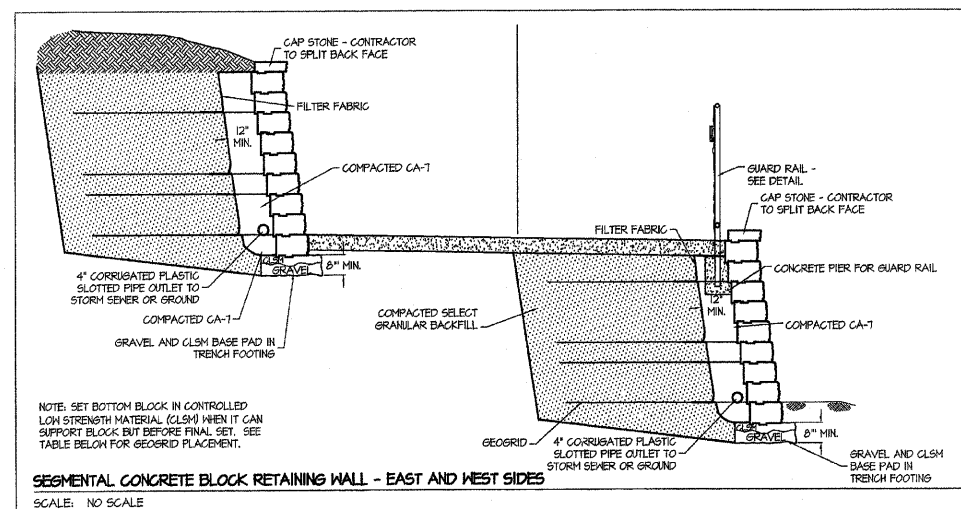
SHEET NO. **36**
 OF **145**



SEGMENTAL CONCRETE BLOCK RETAINING WALL
 SCALE: NO SCALE

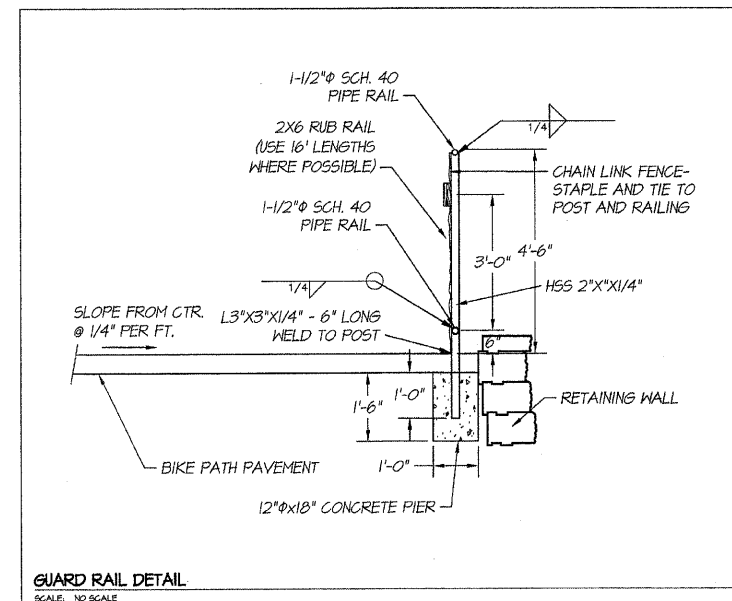


SEGMENTAL BLOCK CONCRETE RETAINING WALL
 SCALE: NO SCALE

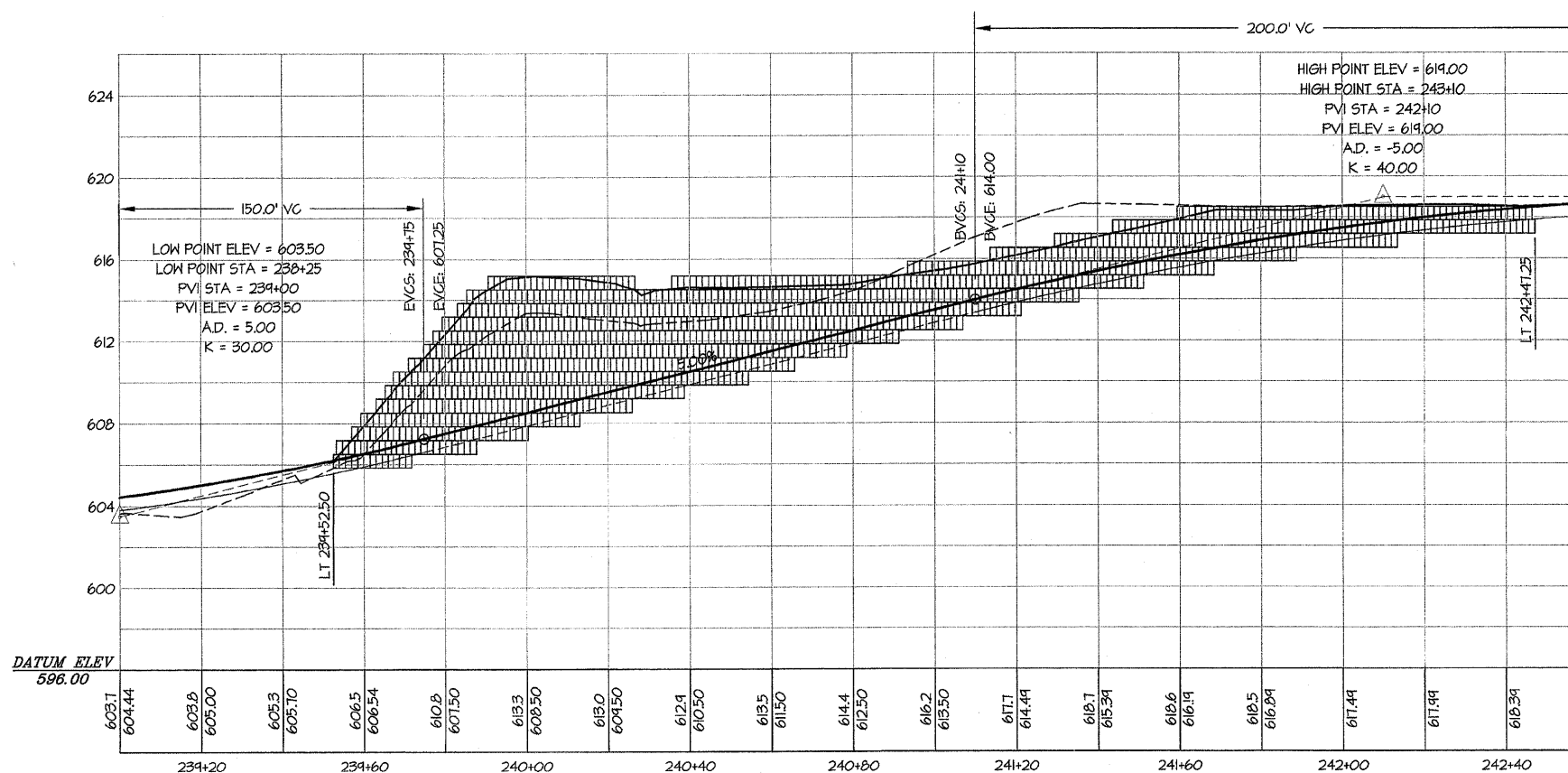


SEGMENTAL CONCRETE BLOCK RETAINING WALL - EAST AND WEST SIDES
 SCALE: NO SCALE

NOTE: The cut in the vicinity of the abutment MUST be backfilled within 24 hours of the cut.



GUARD RAIL DETAIL
 SCALE: NO SCALE



Total Wall Height	Exposed Wall Height	Depth Below Grade	Total # of Courses	Type of Geogrid	Length of Geogrid	GEOGRID PLACEMENT					Total Geogrid Layers
						Distance up from Foundation or Leveling Pad					
H	EMH	DBS	NC	B	LS	DP	DP	DP	DP	DP	NL
4'-8"	4'	0'-8"	7	B	6'-0"	1'-4"	3'-4"				2
6'-8"	6'	0'-8"	10	B	7'-0"	0'-8"	2'-0"	3'-4"	4'-8"		4
9'-4"	8'	1'-4"	14	B	9'-0"	0'-8"	2'-0"	3'-4"	5'-4"	7'-4"	5

NOTE: THE WALL REINFORCEMENT TABLE IS A MINIMUM. ADDITIONAL WALL REINFORCEMENT MAY BE REQUIRED BASED ON SEGMENTAL CONCRETE BLOCK WALL TYP. CONTRACTOR TO SUPPLY SUBMITTAL DETAILING DESIGN IN ACCORDANCE WITH SPECIFICATIONS.

I certify that to the best of my knowledge, information and belief, this bridge design is structurally adequate for the design loading shown on the plans. The design is an economical one for the style of structure and complies with requirements for the current "AASHTO" standard specifications for Highway Bridges.

JERRELL SHAFER
 ILLINOIS STRUCTURAL ENGINEER NO. 81-4445

