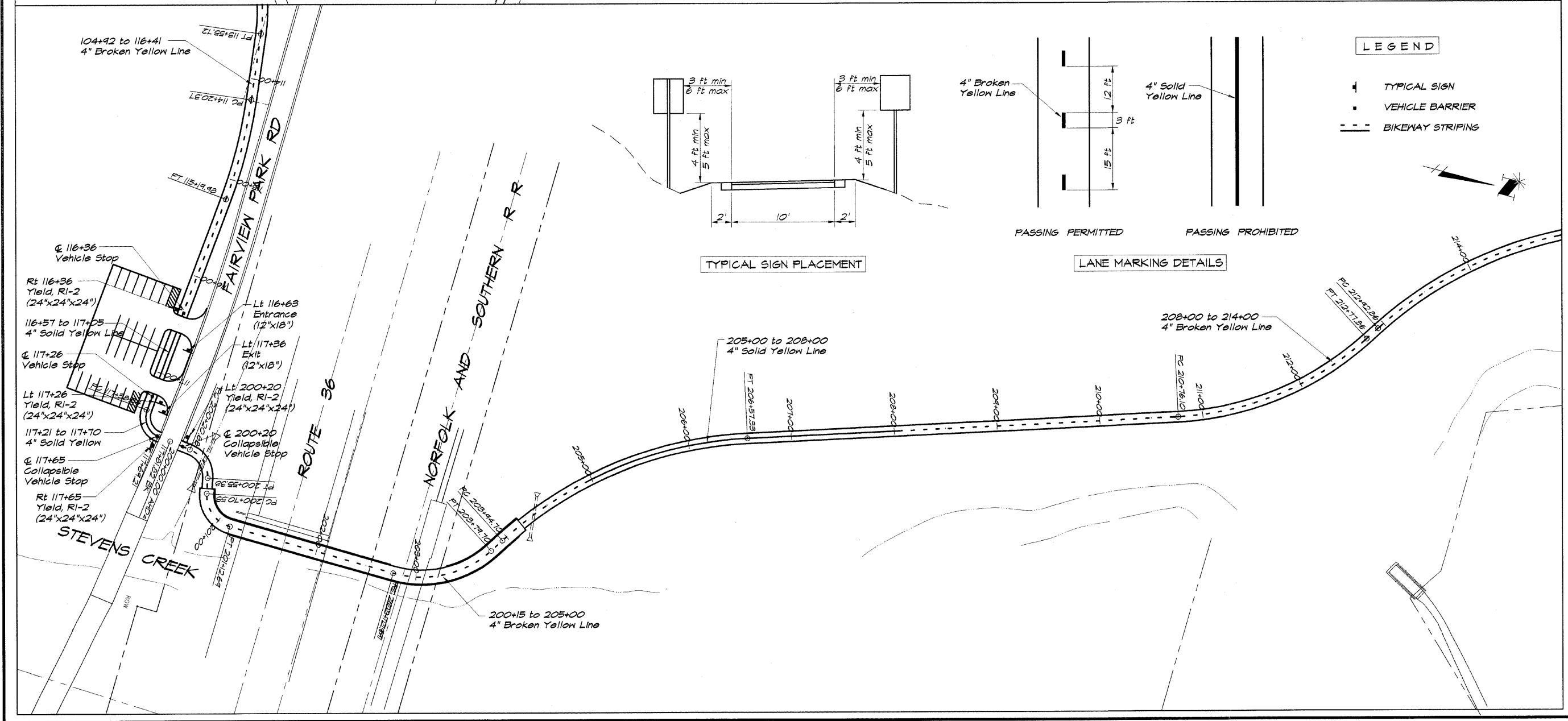
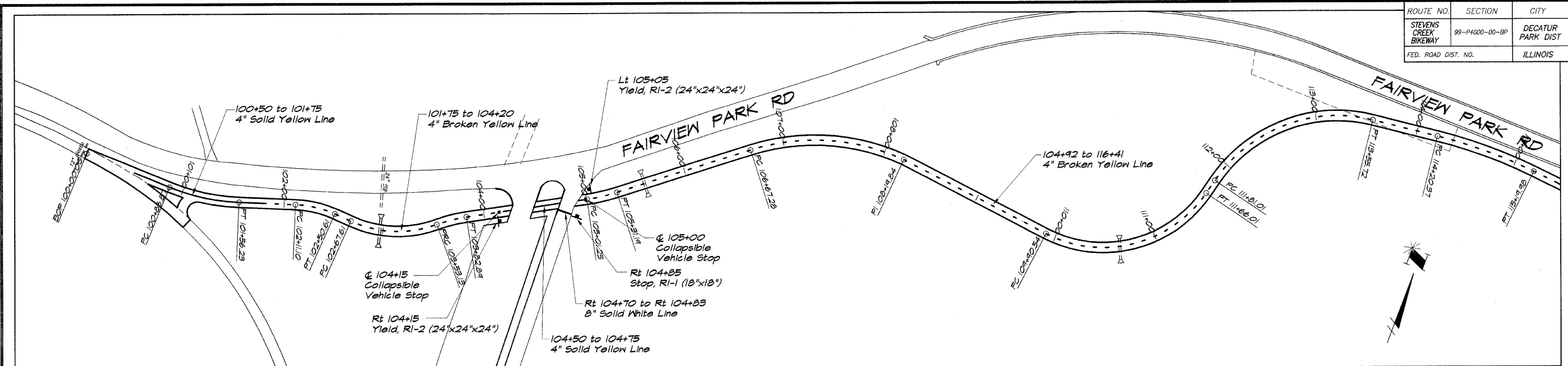


ROUTE NO.	SECTION	CITY	TOTAL SHEETS	SHEET NO.
STEVENS CREEK BIKEWAY	99-P4000-00-BP	DECATUR PARK DIST	145	46
FED. ROAD DIST. NO.		ILLINOIS	PROJECT TE-0007(27)	



BATNBRIDGE & ASSOCIATES, INC.  
 Consulting Engineers  
 GEE  
 MILLANSKI  
 180 SOUTH TAYLORVILLE ROAD  
 DECATUR, ILLINOIS 62526  
 Phone: 217-282-1600

REVISIONS	NO.	BY	DATE

DESIGNED: MHP  
 DRAWN: P Mills  
 FIELD BOOK: XXXX  
 SCALE: 1" = 50'  
 DATE: May 2002  
 JOB NO.: 99099

DECATUR PARK DISTRICT  
 STEVENS CREEK BIKEWAY - PHASE I  
 PAVEMENT MARKING AND SIGNING PLAN

SHEET NO. 46 OF 145