

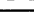
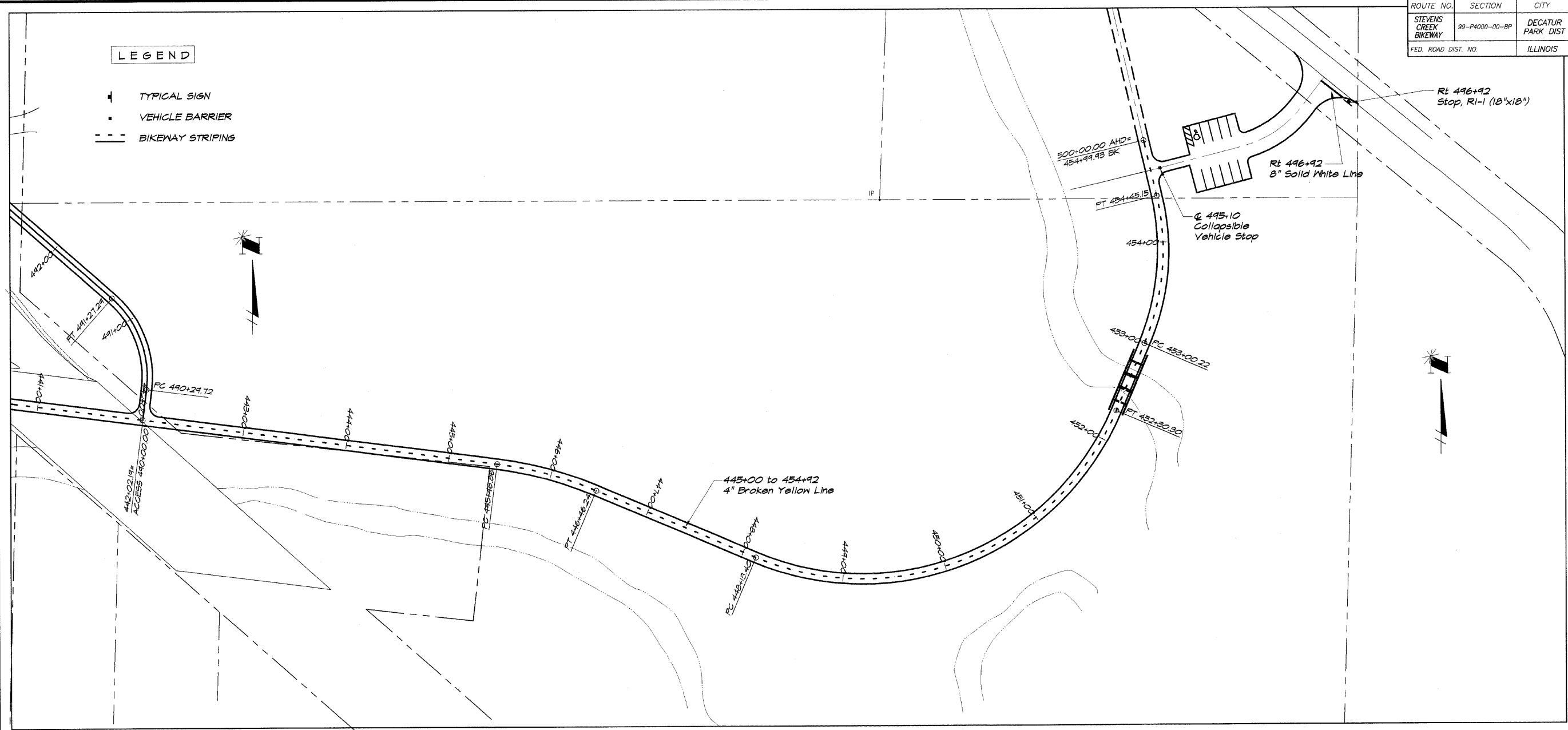


ROUTE NO.	SECTION	CITY	TOTAL SHEETS	SHEET NO.
STEVENS CREEK BIKEWAY	88-P4000-00-BP	DECATUR PARK DIST	145	52
FED. ROAD DIST. NO.	ILLINOIS		PROJECT TE-0007(27)	

LEGEND

-  TYPICAL SIGN
-  VEHICLE BARRIER
-  BIKEWAY STRIPING



BATHBRIDGE & ASSOCIATES, INC.
G&B MILANSKI
 Consulting Engineers
 1870 SOUTH TAYLORVILLE ROAD
 DECATUR, ILLINOIS 62526
 PHONE: 219.426.1800 FAX: 219.426.1802

REVISIONS		
NO.	BY	DATE

DESIGNED	MHP	SCALE	1" = 50'
DRAWN	P	DATE	May 2002
FIELD BOOK	XXX	JOB NO.	98099

DECATUR PARK DISTRICT
STEVENS CREEK BIKEWAY - PHASE I
PAVEMENT MARKING AND SIGNING PLAN