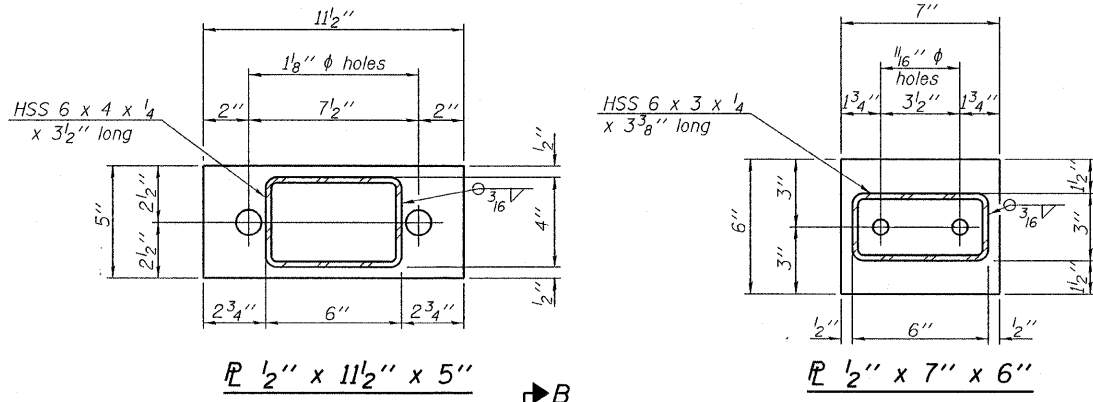


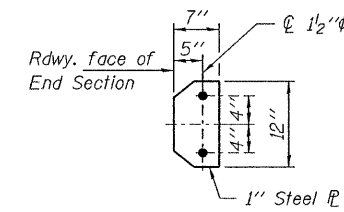
VIEW A-A ROUND HEAD BOLT



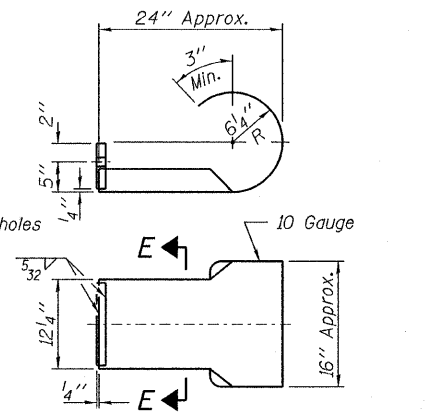
SECTION B-B

SECTION AT RAILING POST

Note: Cost of curled end sections shall be included with the Steel Railing. (2 Required)

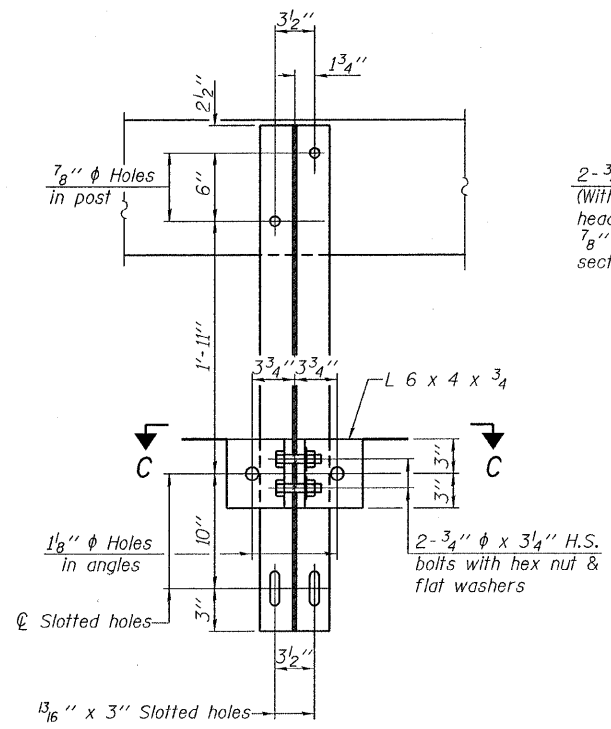


SECTION E-E

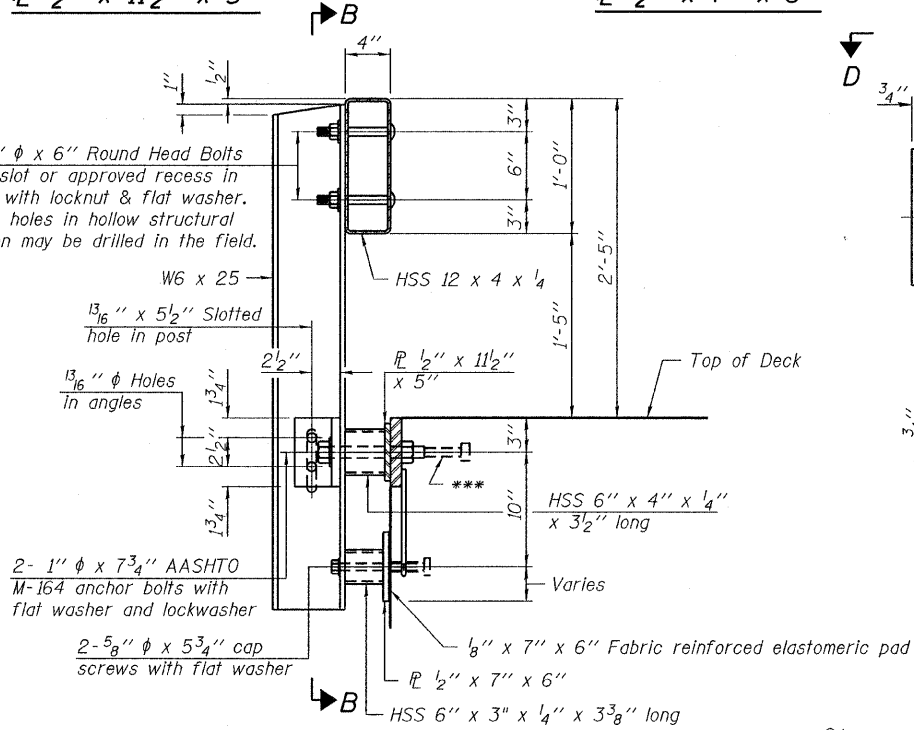


CURLED END SECTION DETAILS

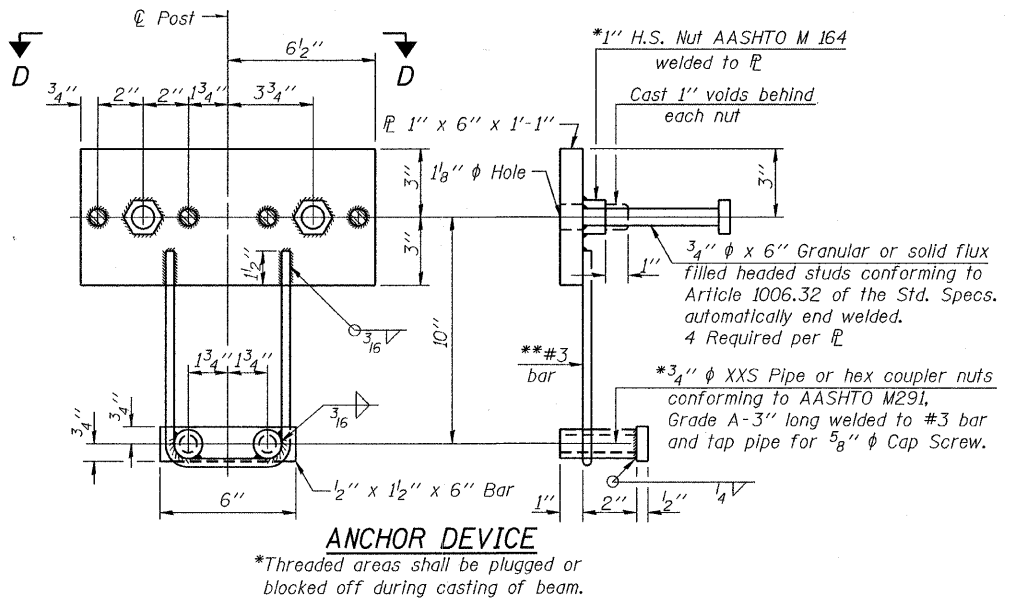
Notes:
 All field drilled holes shall be coated with an approved zinc rich paint before erection.
 For multi-span bridges, sufficient 1/4" x 6" x 1'-2" galvanized steel shims shall be provided to align rail between adjacent spans. Cost included with Steel Railing, Type S-1.
 All steel rail elements shall be galvanized according to Article 509.05 of the Standard Specifications.
 ***The studs of the anchor devices shall be placed below the top reinforcement bars and the outermost longitudinal reinforcement bar shall be placed directly above the studs of the rail post anchor device.



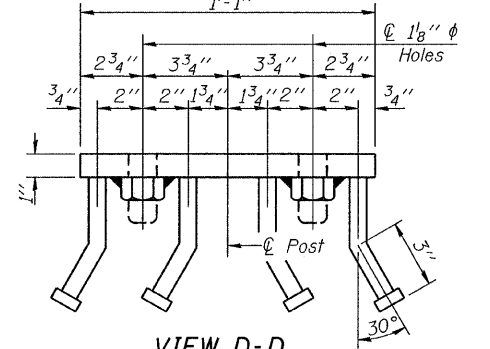
SECTION B-B



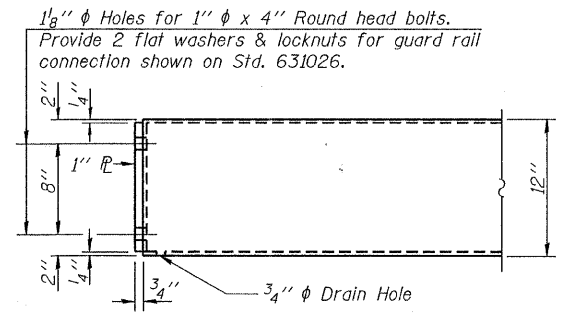
SECTION AT RAILING POST



ANCHOR DEVICE



VIEW D-D



END OF RAIL DETAILS

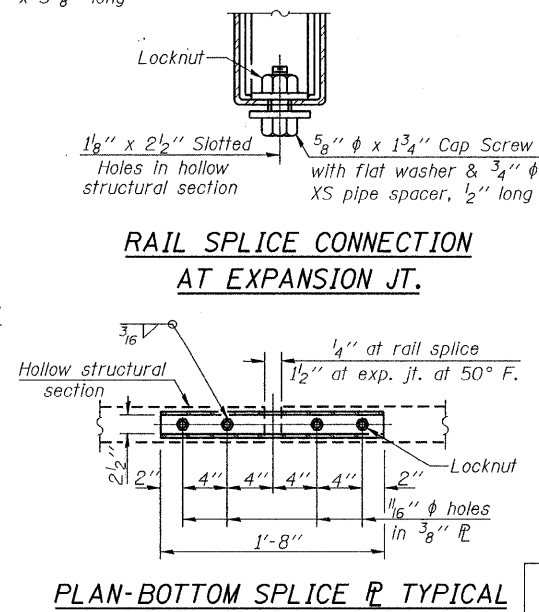
BILL OF MATERIAL

Item	Unit	Quantity
Steel Railing, Type S-1	Foot	268

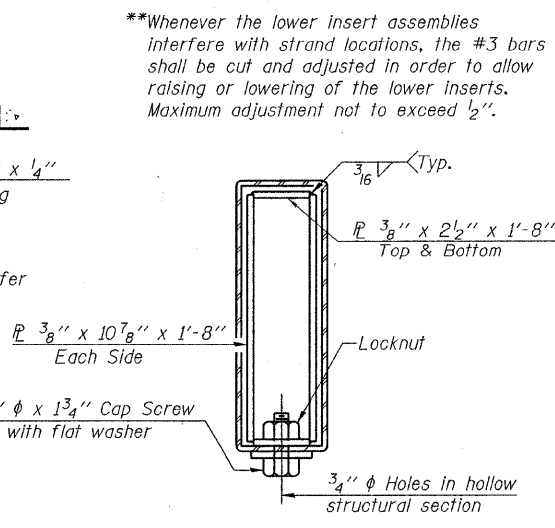
STEEL RAILING, TYPE S-1
 STRUCTURE NO. 096-3446

DESIGNED - A.S.L.
CHECKED - S.W.M.
DRAWN - D.A.B.
CHECKED - D.T.M.

R-23A 5-16-08 (10'-9" Maximum Post Spacing)



PLAN-BOTTOM SPLICE TYPICAL



SECTIONS AT RAIL SPLICE

HAMPTON, LENZINI & RENWICK, INC.
 CIVIL & STRUCTURAL ENGINEERS
 LAND SURVEYORS
 3085 STEVENSON DRIVE, SUITE 201
 SPRINGFIELD, ILLINOIS 62703
 (217) 546-3400
 PROJECT NUMBER: 08.0210.130 DATE: 06/17/09

SHEET NO. 5	C.H.	SECTION	COUNTY	TOTAL SHEETS	SHEET NO.
10 SHEETS	7	07-00116-00-BR	WAYNE	16	11
			CONTRACT NO. 95589		
FED. ROAD DIST. NO.		ILLINOIS	FED. AID PROJECT		