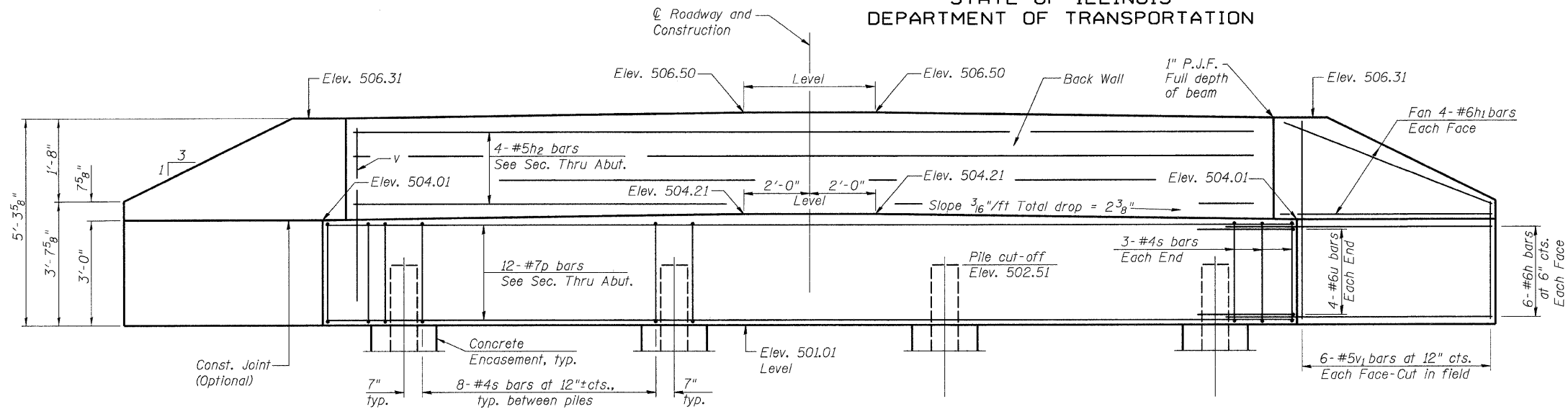
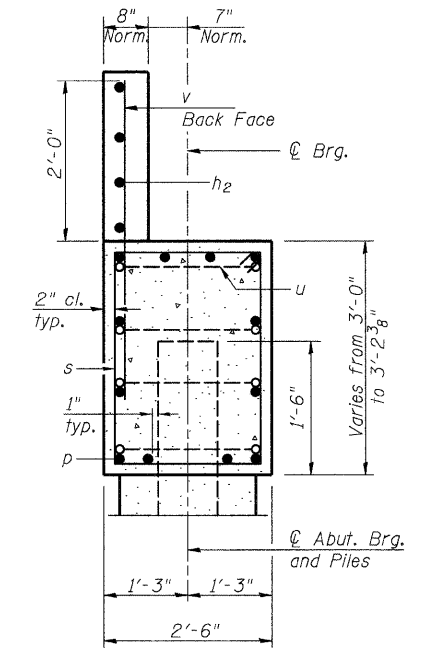


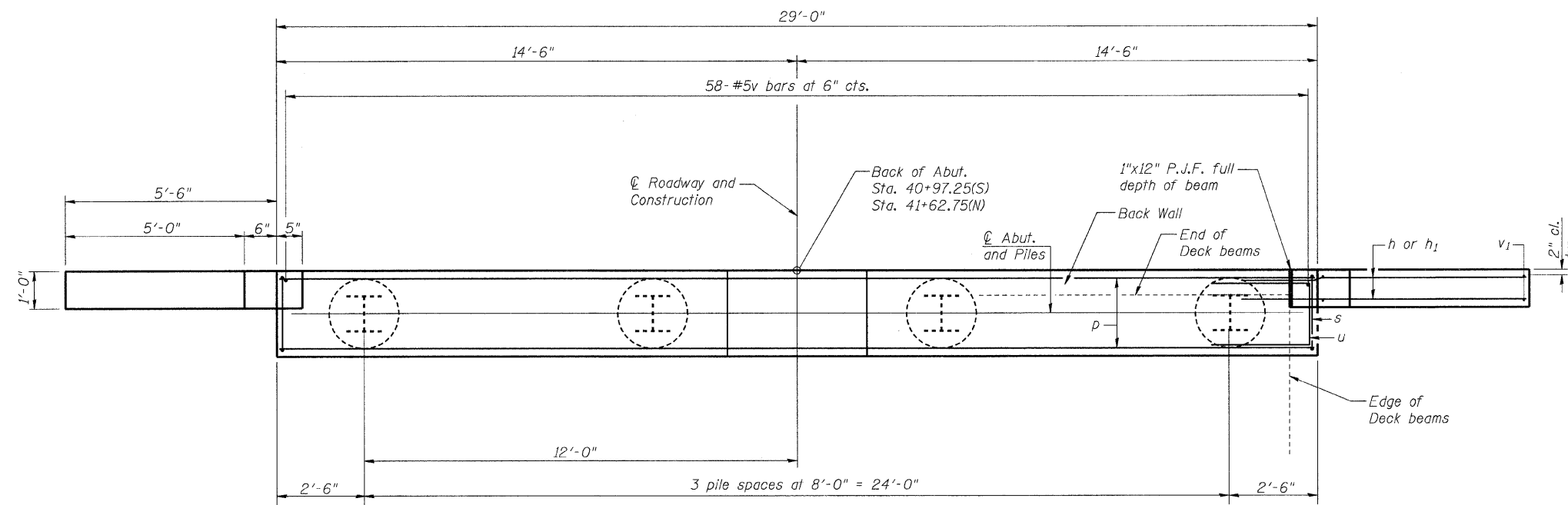
STATE OF ILLINOIS
DEPARTMENT OF TRANSPORTATION



ELEVATION



SEC. THRU ABUT.
(Normal to \bar{C})



PLAN

PILE DATA
SOUTH ABUTMENT

Type: Steel HP12x53
Nominal Required Bearing: 419 kips
Allowable Resistance Available: 139 kips
Estimated Length: 58'/pile
No. Production Piles: 4
No. Test Piles: 0

PILE DATA
NORTH ABUTMENT

Type: Steel HP12x53
Nominal Required Bearing: 419 kips
Allowable Resistance Available: 139 kips
Estimated Length: 58'/pile
No. Production Piles: 3
No. Test Piles: 1

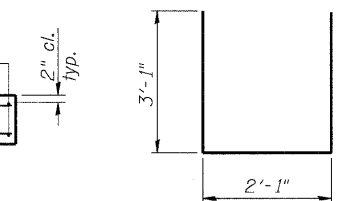
GENERAL NOTES

All exposed edges shall have standard $\frac{3}{4}$ " chamfer, unless otherwise noted.
All clearances between rebar and form surface shall be 2", unless otherwise noted.
Space reinforcement in cap to miss PPCDB dowel rods.
The Steel H-piles shall be according to AASHTO M270 Grade 50.
The Contractor shall drive one (1) Steel HP12x53 Test Pile in a production location at the North abutment as directed by the Engineer before ordering the remainder of the piles.
The Test Pile shall be driven to 110 percent of the Nominal Required Bearing indicated in the pile data information.

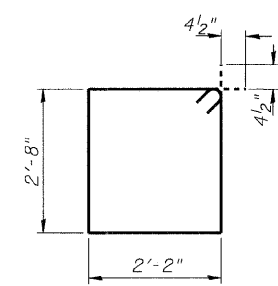
BILL OF MATERIAL
FOR ONE ABUTMENT

Bar	No.	Size	Length	Shape
h	24	#6	9'-6"	—
h ₁	16	#6	5'-9"	—
h ₂	4	#5	27'-8"	—
p	12	#7	28'-8"	—
s	30	#4	10'-5"	□
u	8	#6	8'-3"	□
v	58	#5	4'-3"	—
v ₁	24	#5	5'-0"	CUT IN FIELD
Concrete Structures		Cu. Yd.	11.9	
Reinforcement Bars		Pound	1990	
Furnishing Steel Piles, HP12x53		Foot	S. Abut. 232 N. Abut. 174	
Driving Piles		Foot	S. Abut. 232 N. Abut. 174	
Test Pile, Steel HP12x53		Each	S. Abut. 0 N. Abut. 1	
Concrete Encasement		Cu Yd	1.4	

For details of piles and Concrete Encasement, see Sheet 6 of 6.



BAR u



BAR s

ABUTMENT DETAILS
STRUCTURE NO. 017-3059

DESIGNED	-
CHECKED	-
DRAWN	-
CHECKED	-

AI-0 10-1-08

SHEET NO. 5 6 SHEETS	F.A.S. RTE.	SECTION	COUNTY	TOTAL SHEETS	SHEET NO.
	696	08-00092-00-BR	CRAWFORD	10	9
CONTRACT NO. 95598					
FED. ROAD DIST. NO. 7 ILLINOIS FED. AID PROJECT					

10/21/2009 RAAI #51009