

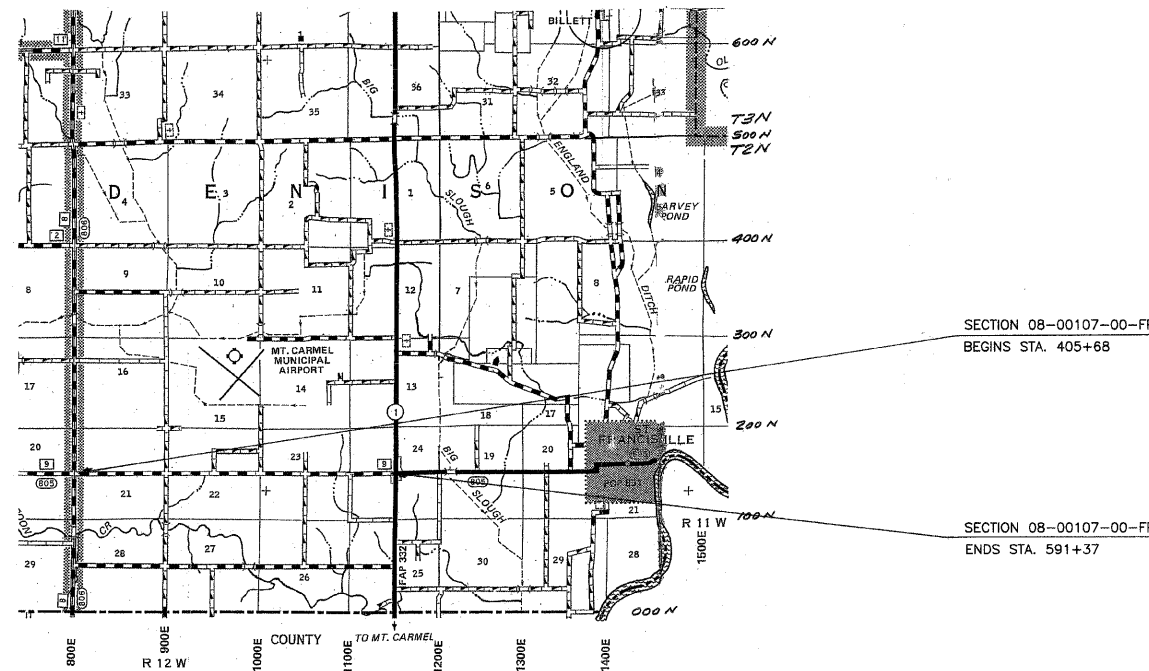
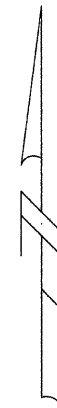
**INDEX OF SHEETS**

- 1 COVER SHEET
- 2 SUMMARY OF QUANTITIES & TYPICAL SECTIONS
- 3-4 CROSS SECTIONS

STANDARDS:

442201-03	CLASS D PATCHES
701006-03	TRAFFIC CONTROL
701306-02	TRAFFIC CONTROL
701311-03	TRAFFIC CONTROL
701301-03	TRAFFIC CONTROL
701336-05	TRAFFIC CONTROL
701901-01	TRAFFIC CONTROL DEVICES
720001-01	SIGN PANEL MOUNT DETAIL
720006-02	SIGN PANEL ERECT DETAIL
729001-01	TYPE A&B POSTS
780001-02	PAVEMENT MARKINGS
BLR 21-8	TRAFFIC CONTROL
BLR 22-6	TRAFFIC CONTROL

STATE OF ILLINOIS  
DEPARTMENT OF TRANSPORTATION  
DIVISION OF HIGHWAYS  
PLANS FOR PROPOSED  
SURFACE TRANSPORTATION RURAL AND  
AMERICAN RECOVERY AND REINVESTMENT ACT PROJECT  
LAWRENCE COUNTY  
SECTION 08-00107-00-FP  
FAS ROUTE 805 (CH 9)  
PROJECT NO. ARA-RS-805(109)  
JOB NO. C-97-017-10



DESIGN SPEED = 50 M.P.H.  
FUNCTIONAL CLASS - RURAL MAJOR COLLECTOR  
ADT = 500

LOCATION MAP  
APPROXIMATE SCALE: 1 INCH = 800 FEET  
NET LENGTH = 18,569 FEET = 3.52 MILES

TOLL FREE JOINT UTILITY LOCATING  
INFORMATION FOR EXCAVATORS (J.U.L.I.E.)  
TELEPHONE NO. 1-800-892-0123

CONNOR & CONNOR, INC.  
PROFESSIONAL DESIGN FIRM #184-000832

John A. Stone  
 ILLINOIS REGISTERED PROFESSIONAL ENGINEER # 55012  
 LICENSE EXPIRES NOVEMBER 30, 2009  
 09/25/2009

ILLINOIS DEPARTMENT OF TRANSPORTATION
APPROVED: <u>9-29</u> , 2009  LAWRENCE COUNTY ENGINEER
PASSED: <u>10-26</u> , 2009  DISTRICT SEVEN ENGINEER OF LOCAL ROADS & STREETS
RELEASING FOR BID BASED ON LIMITED REVIEW: <u>10/26</u> , 2009  DEPUTY DIRECTOR OF HIGHWAYS, REGION FOUR ENGINEER