

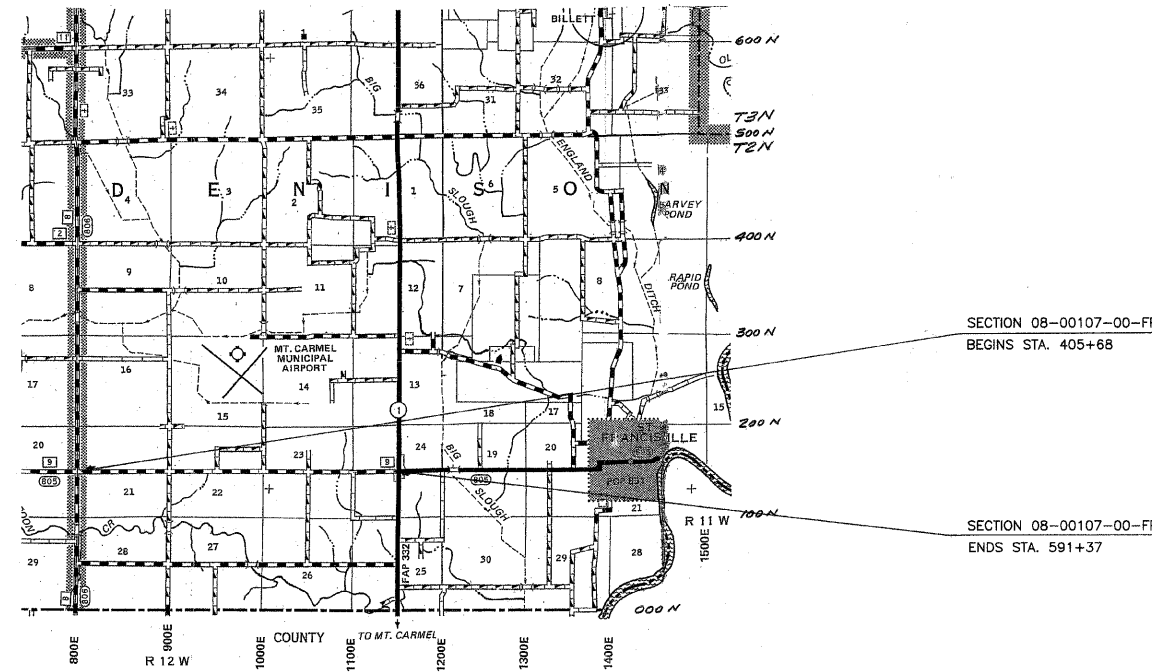
**INDEX OF SHEETS**

- 1 COVER SHEET
- 2 SUMMARY OF QUANTITIES & TYPICAL SECTIONS
- 3-4 CROSS SECTIONS

STANDARDS:

442201-03	CLASS D PATCHES
701006-03	TRAFFIC CONTROL
701306-02	TRAFFIC CONTROL
701311-03	TRAFFIC CONTROL
701301-03	TRAFFIC CONTROL
701336-05	TRAFFIC CONTROL
701901-01	TRAFFIC CONTROL DEVICES
720001-01	SIGN PANEL MOUNT DETAIL
720006-02	SIGN PANEL ERECT DETAIL
729001-01	TYPE A&B POSTS
780001-02	PAVEMENT MARKINGS
BLR 21-8	TRAFFIC CONTROL
BLR 22-6	TRAFFIC CONTROL

STATE OF ILLINOIS  
DEPARTMENT OF TRANSPORTATION  
DIVISION OF HIGHWAYS  
PLANS FOR PROPOSED  
SURFACE TRANSPORTATION RURAL AND  
AMERICAN RECOVERY AND REINVESTMENT ACT PROJECT  
LAWRENCE COUNTY  
SECTION 08-00107-00-FP  
FAS ROUTE 805 (CH 9)  
PROJECT NO. ARA-RS-805(109)  
JOB NO. C-97-017-10



DESIGN SPEED = 50 M.P.H.  
FUNCTIONAL CLASS - RURAL MAJOR COLLECTOR  
ADT = 500

LOCATION MAP  
APPROXIMATE SCALE: 1 INCH = 800 FEET  
NET LENGTH = 18,569 FEET = 3.52 MILES

TOLL FREE JOINT UTILITY LOCATING  
INFORMATION FOR EXCAVATORS (J.U.L.I.E.)  
TELEPHONE NO. 1-800-892-0123

CONNOR & CONNOR, INC.  
PROFESSIONAL DESIGN FIRM #184-000832

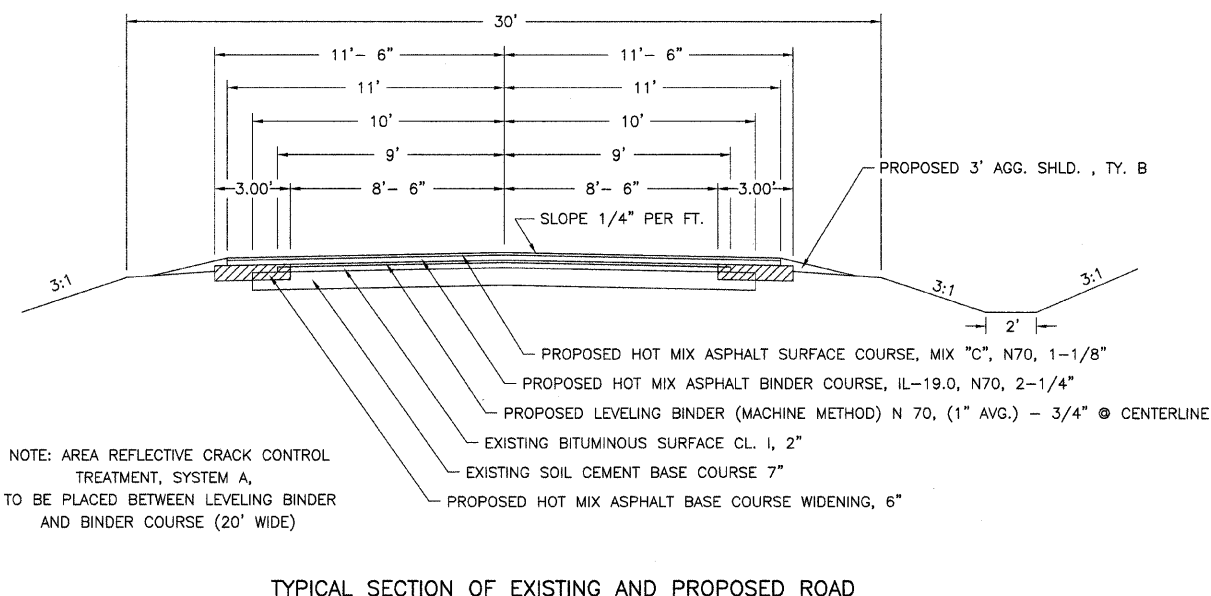
John A. Stone  
 ILLINOIS REGISTERED PROFESSIONAL ENGINEER # 55012  
 LICENSE EXPIRES NOVEMBER 30, 2009  
 09/25/2009

ILLINOIS DEPARTMENT OF TRANSPORTATION
APPROVED: <u>9-29</u> , 2009  LAWRENCE COUNTY ENGINEER
PASSED: <u>10-26</u> , 2009  DISTRICT SEVEN ENGINEER OF LOCAL ROADS & STREETS
RELEASING FOR BID BASED ON LIMITED REVIEW: <u>10/26</u> , 2009  DEPUTY DIRECTOR OF HIGHWAYS, REGION FOUR ENGINEER

### SUMMARY OF QUANTITIES

QUANTITY	UNIT	ITEM	CODE NO.
1,688	FOOT	SHORT-TERM PAVEMENT MARKING REMOVAL	XX003140
2,063	CU YD	EARTH EXCAVATION (WIDENING)	20200500
207	CU YD	TRENCH BACKFILL	20800150
0.4	ACRE	SEEDING, CLASS 2 (SPECIAL)	25001000
12,379	SQ YD	HOT-MIX ASPHALT BASE COURSE WIDENING, 6"	35600700
116	TON	AGGREGATE SURFACE COURSE, TYPE B	40200800
3,714	GALLON	BITUMINOUS MATERIALS (PRIME COAT)	40600100
74	TON	AGGREGATE (PRIME COAT)	40600300
2,017	TON	LEVELING BINDER (MACHINE METHOD), N70	40600635
5,872	TON	HOT-MIX ASPHALT BINDER COURSE, IL-19.0, N70	40603085
3,133	TON	HOT-MIX ASPHALT SURFACE COURSE, MIX "C", N70	40603315
80	SQ YD	CLASS D PATCHES, TYPE II, 9 INCH	44201753
54	SQ YD	CLASS D PATCHES, TYPE III, 9 INCH	44201757
34	SQ YD	CLASS D PATCHES, TYPE IV, 9 INCH	44201759
41,264	SQ YD	AREA REFLECTIVE CRACK CONTROL TREATMENT, SYSTEM A	44300300
2,046	TON	AGGREGATE SHOULDERS, TYPE B	48101200
1	EACH	REMOVAL OF EXISTING STRUCTURES	50100100
138	FOOT	PIPE CULVERT REMOVAL	50105220
58	FOOT	PIPE CULVERTS, CLASS C, TYPE 1 24"	542C0229
60	FOOT	PIPE CULVERTS, CLASS C, TYPE 1 48"	542C0253
60	FOOT	PIPE CULVERTS, CLASS C, TYPE 2 48"	542C1093
156	FOOT	PIPE CULVERTS, CLASS C, TYPE 1 EQUIVALENT ROUND-SIZE 36"	542C5491
42	FOOT	PIPE CULVERTS, CLASS C, TYPE 1 EQUIVALENT ROUND-SIZE 48"	542C5503
42	FOOT	PIPE CULVERTS, CLASS C, TYPE 1 EQUIVALENT ROUND-SIZE 54"	542C5509
3	CAL MO	ENGINEER'S FIELD LABORATORY	67000600
1	L SUM	MOBILIZATION	67100100
1	L SUM	TRAFFIC CONTROL AND PROTECTION, STANDARD 701306	70100460
1	L SUM	TRAFFIC CONTROL AND PROTECTION, STANDARD 701336	70100600
1	L SUM	TRAFFIC CONTROL AND PROTECTION	70101700
5,064	FOOT	SHORT-TERM PAVEMENT MARKING	70300100
55.60	SQ FT	SIGN PANEL - TYPE 1	72000100
280	FOOT	METAL POST - TYPE A	72900100
13,300	FOOT	PAINT PAVEMENT MARKING-LINE 4"	78001110*

\* SPECIALTY ITEMS



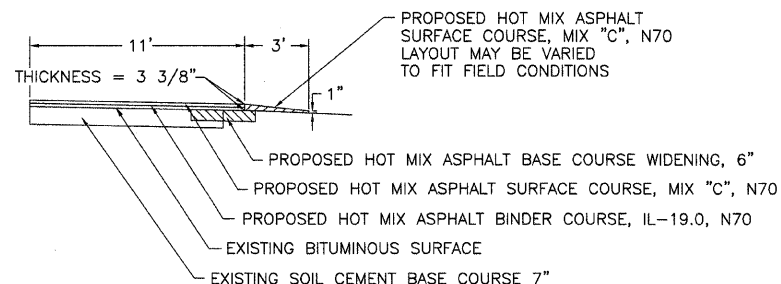
NOTE: AREA REFLECTIVE CRACK CONTROL TREATMENT, SYSTEM A, TO BE PLACED BETWEEN LEVELING BINDER AND BINDER COURSE (20' WIDE)

### PAVEMENT DESIGN

2009 A.D.T. = 500, 2029 A.D.T. = 600, P. = 510, S.U. = 30, M.U. = 10  
 CLASS III ROAD (80,000# DESIGN), T.F. = 0.07, I.B.R. = 2 (ASSUMED), SN<sub>F</sub> = 3.1  
 EXISTING PAVEMENT STRUCTURE: SOIL CEMENT BASE COURSE 7" @ 0.17 = 1.19  
 BITUMINOUS SURFACE CLASS I, 2" @ 0.30 = 0.60  
 SEAL COAT BUILD-UP @ 0.20 = 0.20  
 PROPOSED PAVEMENT STRUCTURE: HMA BINDER COURSE 2 1/4" @ 0.40 = 0.90  
 HMA SURFACE COURSE 1 1/8" @ 0.40 = 0.45  
 TOTAL = 3.34

### HOT-MIX ASPHALT SURFACE COURSE

7 SIDEROADS @ 4 TONS EACH	=	28 TONS
74 ENTRANCES @ 2 TONS EACH	=	148 TONS
14 MAILBOX TURNOUTS @ 2 TONS EACH	=	28 TONS
<b>TOTAL</b>	<b>=</b>	<b>204 TONS</b>



DETAIL OF RESURFACING ENTRANCES, SIDEROADS & MAILBOX TURNOUTS

### PAINT PAVEMENT MARKING LINE 4" (TOTAL = 13,300 FT.)

(YELLOW) CENTERLINE STRIPE  
 STA. 405+68 TO STA. 591+37 = 4640 FT

(YELLOW) NO PASSING ZONE		LEFT SIDE (WEST BOUND)		RIGHT SIDE (EAST BOUND)	
STA. 419+00 - STA. 427+50	=	850 FT	STA. 410+50 - STA. 418+50	=	800 FT
STA. 440+50 - STA. 449+00	=	850 FT	STA. 431+50 - STA. 440+00	=	850 FT
STA. 470+00 - STA. 477+50	=	750 FT	STA. 461+00 - STA. 468+50	=	750 FT
STA. 492+50 - STA. 495+50	=	300 FT	STA. 484+00 - STA. 486+50	=	250 FT
STA. 517+00 - STA. 533+50	=	1650 FT	STA. 508+50 - STA. 524+50	=	1600 FT
<b>TOTALS</b>	<b>=</b>	<b>8650 FT</b>			

### TRANSITIONS

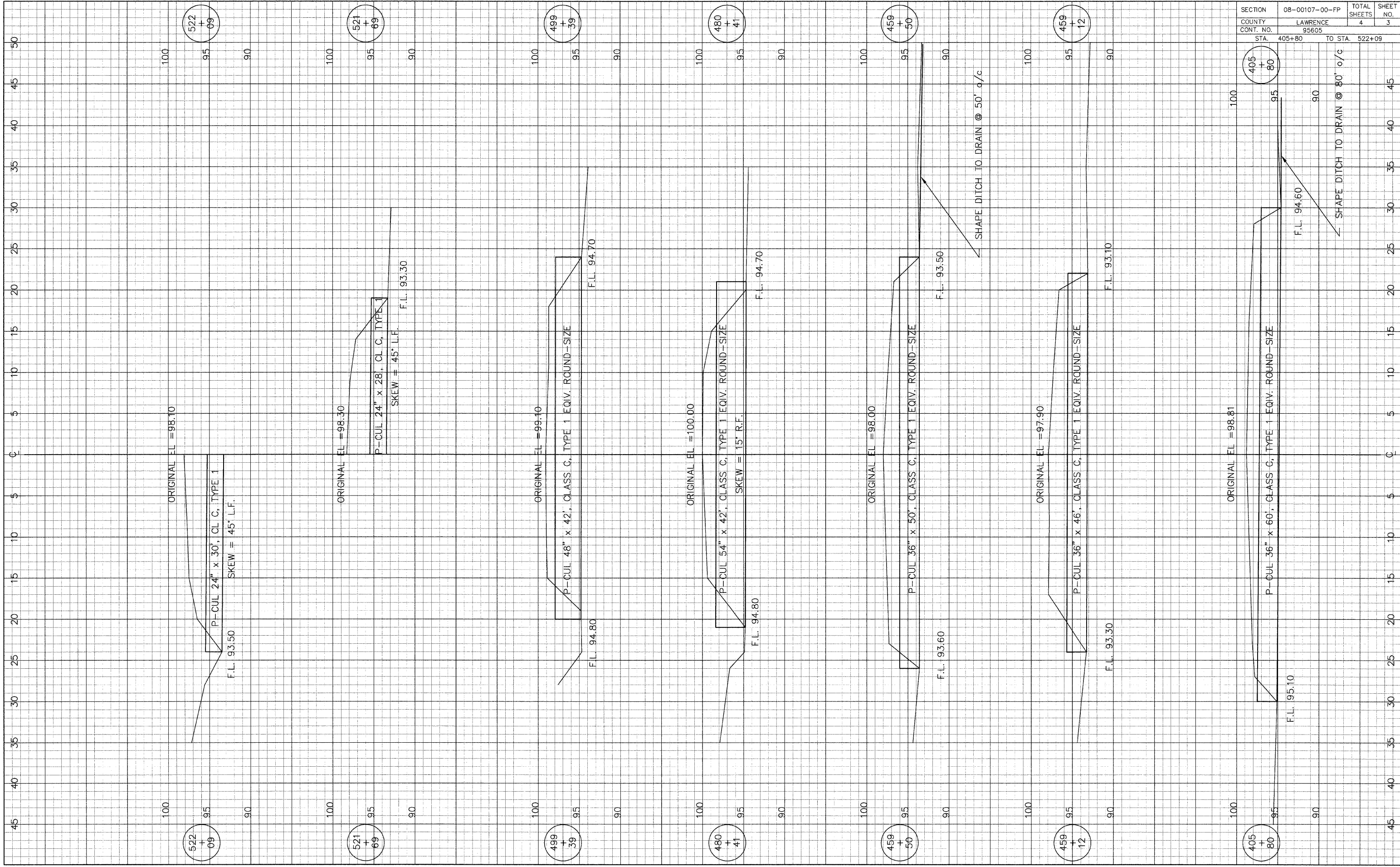
FEATHER HOT-MIX ASPHALT SURFACE AND BINDER FROM 1/2" TO 3-3/8" IN 70'  
 STA. 405+68 TO STA. 406+38  
 STA. 591+37 TO STA. 590+67

### NO PASSING ZONE SIGNS (W 14-3)

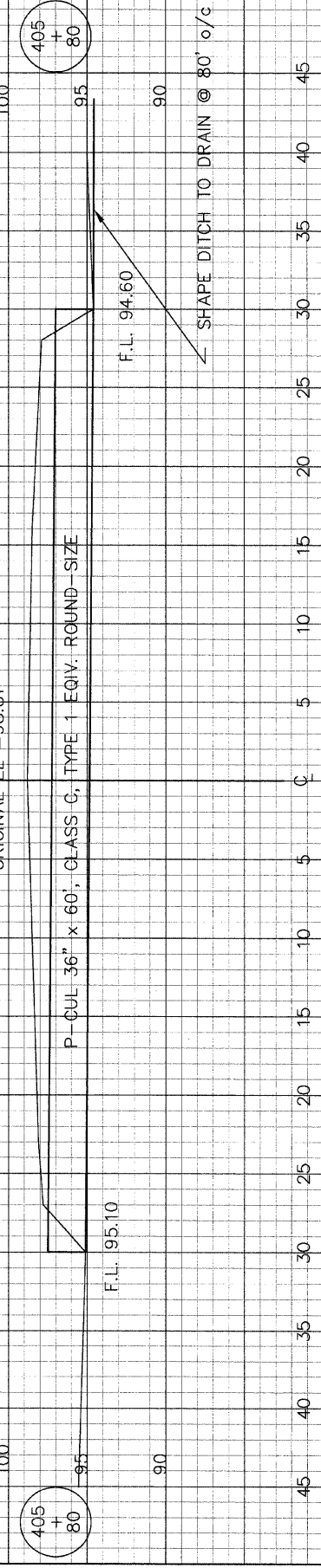
STA.	SIGN PANEL - TY. 1	METAL POST - TY. A
RT. STA. 427+50	1 @ 5.56 S.F.	2 EA. @ 14 FT. = 28 FT.
RT. STA. 449+00	1 @ 5.56 S.F.	2 EA. @ 14 FT. = 28 FT.
RT. STA. 477+50	1 @ 5.56 S.F.	2 EA. @ 14 FT. = 28 FT.
RT. STA. 495+50	1 @ 5.56 S.F.	2 EA. @ 14 FT. = 28 FT.
RT. STA. 533+50	1 @ 5.56 S.F.	2 EA. @ 14 FT. = 28 FT.
LT. STA. 410+50	1 @ 5.56 S.F.	2 EA. @ 14 FT. = 28 FT.
LT. STA. 431+50	1 @ 5.56 S.F.	2 EA. @ 14 FT. = 28 FT.
LT. STA. 461+00	1 @ 5.56 S.F.	2 EA. @ 14 FT. = 28 FT.
LT. STA. 484+00	1 @ 5.56 S.F.	2 EA. @ 14 FT. = 28 FT.
LT. STA. 508+50	1 @ 5.56 S.F.	2 EA. @ 14 FT. = 28 FT.
<b>TOTALS</b>	<b>=</b>	<b>55.60 S.F. 280 FT.</b>

### PROPOSED PIPE CULVERTS

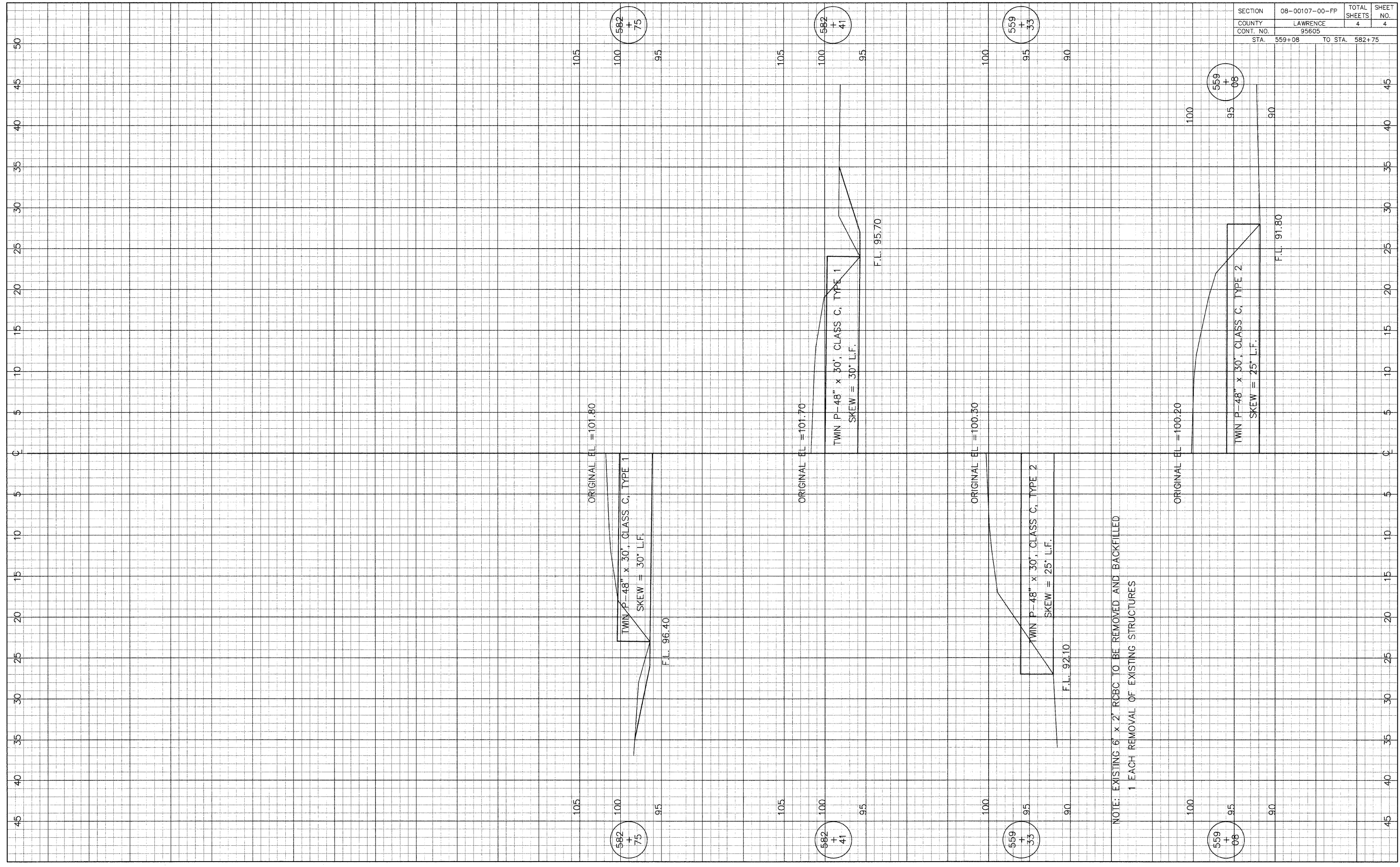
STATION	PROPOSED PIPE	EXISTING PIPE TO BE REMOVED	U.S.F.L.	D.S.F.L.	DRAINAGE AREA	TRENCH BACKFILL	CLASS D PATCH 9"	AGG. SURF. CSE. TY. B 12"
A.R. STA. 405+80	P-36" X 60', CL. C, TY. 1 EQUIV. ROUND-SIZE	36" C.M.P.	95.10	94.60	26 ACRE	16 C.Y.	34 S.Y., TY. IV	23 TON
A.R. STA. 459+12	P-36" X 46', CL. C, TY. 1 EQUIV. ROUND-SIZE	36" C.M.P.	93.30	93.10	7 ACRE	13 C.Y.	11 S.Y., TY. II	8 TON
A.R. STA. 459+50	P-36" X 50', CL. C, TY. 1 EQUIV. ROUND-SIZE	36" C.M.P.	93.60	93.50	22 ACRE	10 C.Y.	11 S.Y., TY. II	8 TON
A.R. STA. 480+41	P-54" X 42', CL. C, TY. 1 EQUIV. ROUND-SIZE	TWIN 36" C.M.P.	94.80	94.70	228 ACRE	24 C.Y.	18 S.Y., TY. III	12 TON
A.R. STA. 499+39	P-48" X 42', CL. C, TY. 1 EQUIV. ROUND-SIZE	TWIN 30" C.M.P.	94.80	94.70	70 ACRE	7 C.Y.	16 S.Y., TY. III	11 TON
A.R. STA. 521+89	P-24" X 58', CL. C, TY. 1	18" C.M.P.	93.50	93.30	7 ACRE	13 C.Y.	10 S.Y., TY. II	7 TON
A.R. STA. 559+21	P-48" X 60', CL. C, TY. 2	48" C.M.P. & 2' X 6' R.C.B.C.	92.10	91.80	562 ACRE	31 C.Y.	13 S.Y., TY. II	9 TON
A.R. STA. 582+58	P-48" X 60', CL. C, TY. 1	48" C.M.P.	96.40	95.70	118 ACRE	13 C.Y.	14 S.Y., TY. II	10 TON
A.R. STA. 534+62	PIPE CULVERT REMOVAL 30" X 46'		N/A	N/A	N/A	13 C.Y.	9 S.Y., TY. II	6 TON
A.R. STA. 539+21	PIPE CULVERT REMOVAL 21" X 46'		N/A	N/A	N/A	9 C.Y.	6 S.Y., TY. II	4 TON
A.R. STA. 539+70	PIPE CULVERT REMOVAL 21" X 46'		N/A	N/A	N/A	9 C.Y.	6 S.Y., TY. II	4 TON
A.R. STA. 559+38	REMOVAL OF EXISTING STRUCTURES 2'R X 6'S X 30' R.C.B.C.		N/A	N/A	N/A	49 C.Y.	20 S.Y., TY. III	14 TON



SECTION	08-00107-00-FP	TOTAL SHEETS	4	SHEET NO.	3
COUNTY	LAWRENCE				
CONT. NO.	95605				
STA.	405+80	TO STA.	522+09		



SECTION	08-00107-00-FP	TOTAL SHEETS	4
COUNTY	LAWRENCE	SHEET NO.	4
CONT. NO.	95605		
STA.	559+08	TO STA.	582+75



ORIGINAL EL = 101.80

TWIN P-48" x 30', CLASS C, TYPE 1  
SKEW = 30' L.F.

F.L. 96.40

582  
+  
75

ORIGINAL EL = 101.70

TWIN P-48" x 30', CLASS C, TYPE 1  
SKEW = 30' L.F.

F.L. 95.70

582  
+  
41

ORIGINAL EL = 100.50

TWIN P-48" x 30', CLASS C, TYPE 2  
SKEW = 25' L.F.

F.L. 92.10

559  
+  
33

ORIGINAL EL = 100.20

TWIN P-48" x 30', CLASS C, TYPE 2  
SKEW = 25' L.F.

F.L. 91.80

559  
+  
08

NOTE: EXISTING 6' x 2' RBC TO BE REMOVED AND BACKFILLED  
1 EACH REMOVAL OF EXISTING STRUCTURES