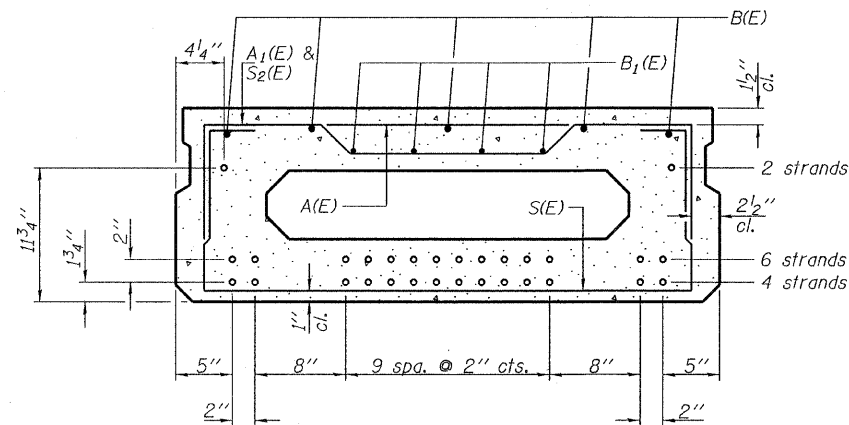


SECTION A-A
(Showing dimensions)



SECTION A-A
(Showing reinforcement and permissible strand locations)
Note: Place the number of strands specified in each row symmetrically about the centerline of beam in the permissible strand locations shown.

BAR LIST
ONE BEAM ONLY
(For information only)

Bar	No.	Size	Length	Shape
A(E)	6	#4	3'-7"	—
A1(E)	14	#4	3'-10"	—
B(E)	5	#5	24'-8"	—
B1(E)	4	#4	24'-8"	—
S(E)	36	#4	6'-9"	□
S1(E)	10	#4	5'-3"	□
S2(E)	26	#4	5'-6"	□
U(E)	12	#5	3'-8"	□
U1(E)	2	#4	6'-0"	□

Note: See sheets 3 & 4 of 10 for additional details and Bill of Material.

Note: Spacing of S(E) and S2(E) bars may be adjusted up to 4" in the immediate area of the transverse tie diaphragms to miss the block outs for the transverse ties.

DESIGNED - A.S.L.
CHECKED - S.W.M.
DRAWN - D.T.M.
CHECKED - D.A.B.

PD-1748-0 10-1-08

SUPERSTRUCTURE
17" X 48" PPC DECK BEAM
STRUCTURE NO. 096-3451

HAMPTON, LENZINI AND RENWICK, INC. CIVIL ENGINEERS - STRUCTURAL ENGINEERS - LAND SURVEYORS 3085 STEVENSON DRIVE, SUITE 201 SPRINGFIELD, ILLINOIS 62703 217.546.3400 www.hlrengineering.com 184.000950 ILLINOIS PROFESSIONAL DESIGN FIRM LS / PE / SE CORPORATION PROJECT NUMBER: 09.0060.130 DATE: 08/22/09	SHEET NO. 2	T.R.	SECTION	COUNTY	TOTAL SHEETS	SHEET NO.
	10 SHEETS	622	08-15143-00-BR	WAYNE	14	6
LEECH ROAD DISTRICT			CONTRACT NO. 95607			
FED. ROAD DIST. NO.		ILLINOIS	FED. AID PROJECT			