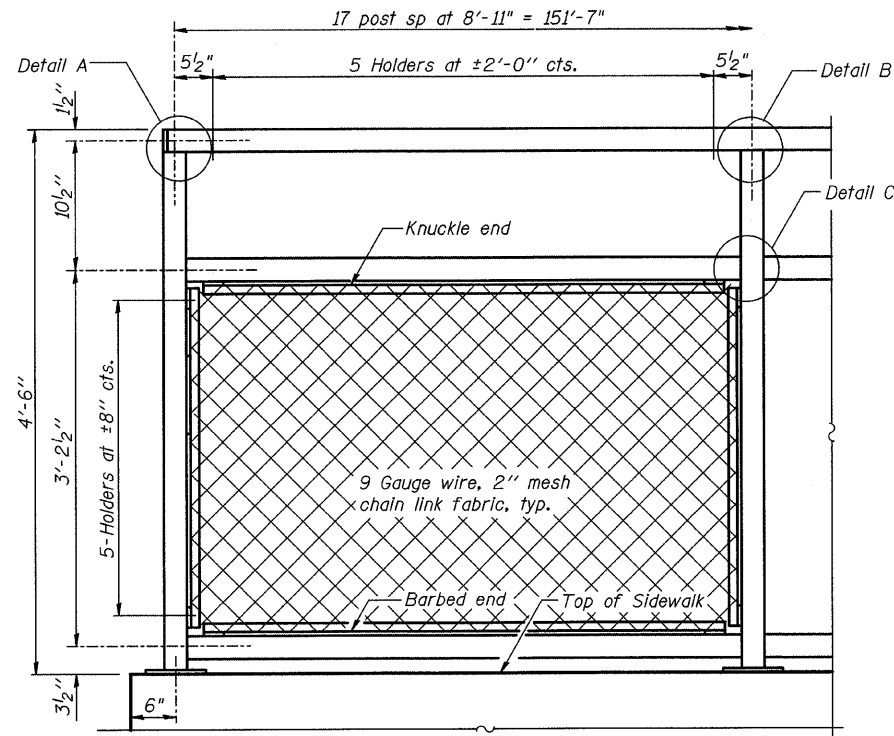


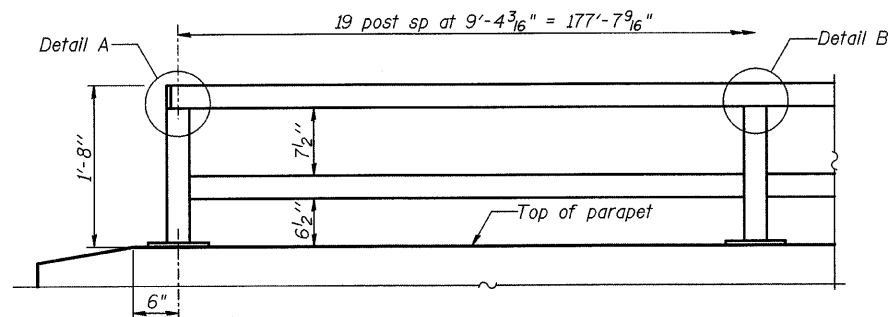
ROUTE NO.	SECTION	COUNTY	TOTAL SHEETS	SHEET NO.
FAU 7432	*	MACON	47	26
FEDERAL DIST.	ILLINOIS	PROJECT		

• 08-00602-00-BR

Note:
All steel rail elements shall be galvanized according to Article 509.05 of the Standard Specifications.

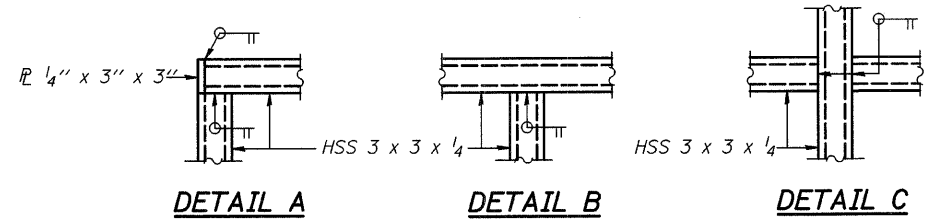


BICYCLE RAILING



PARAPET RAILING ELEVATION

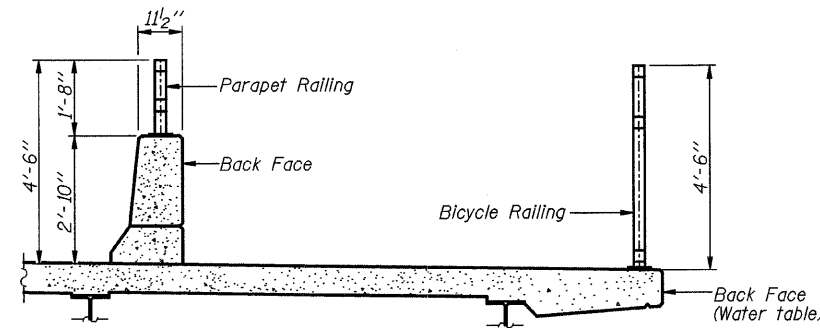
(Inside Face of Two Element Rail)



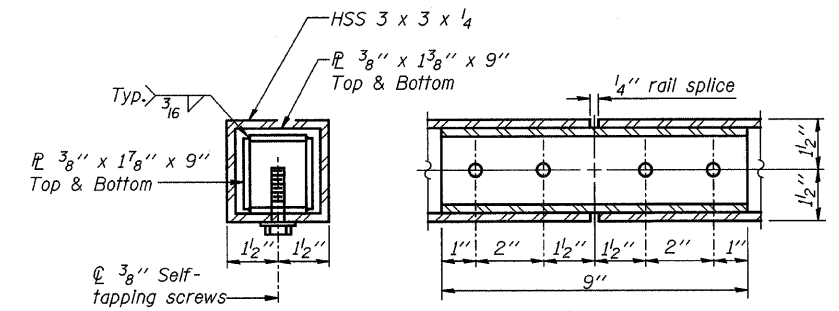
DETAIL A

DETAIL B

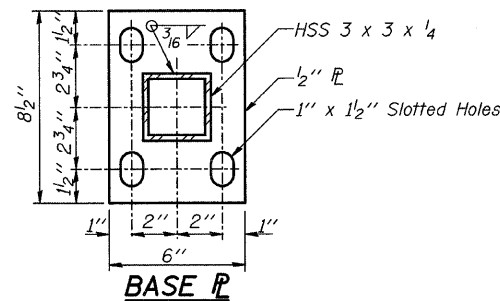
DETAIL C



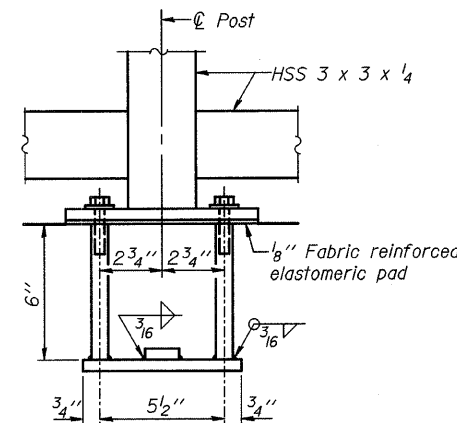
SECTION THRU DECK



RAIL SPLICE

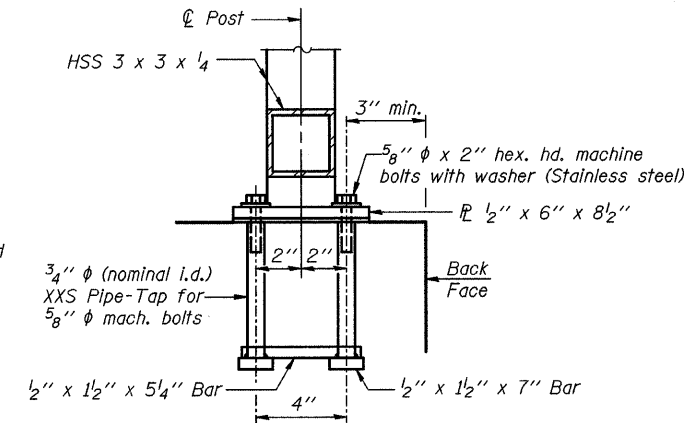


BASE PL



ANCHOR BOLT DETAILS

In lieu of the cast-in-place anchor device shown, the Contractor has the option of drilling and setting 5/8" φ anchor rods according to Article 509.06 of the Standard Specifications. Embedment shall be according to the manufacturer's specifications.



BILL OF MATERIAL

Item	Unit	Quantity
Bicycle Railing	Foot	152
Parapet Railing	Foot	178

MACARTHUR ROAD (FAU 7432) OVER STEVENS CREEK

BICYCLE RAILING

REVISIONS	SECTION 08-00602-00-BR	MACARTHUR ROAD (FAU 7432)	DRAWN BY DATE
No. DATE INITIALS	SN 058-6025	MACON COUNTY	R. KING 07/09
1	STA 10+00.00		CHECKED BY DATE
2			JMB 07/09
3			BOOK NUMBER
4			486
5			PROJECT No.
6			5307
7			SHEET No.
8			
9			
10			

HOMER L. CHASTAIN & ASSOCIATES, LLP
CONSULTING ENGINEERS
DECATUR CHICAGO
617 423-8844 0780 714-0080
ROCKFORD
815 489-0060
184-00177